

Facades available:

Callington, Eastwood, Harrogate
Kent, Lancaster, Sheffield
Swansea, Wiltshire

Overall home width 13.67m

Overall home length 23.03m

Residence 216.1m² 23.3sq

Garage 36.5m² 3.9sq

Porch 6.0m² 0.6sq

Alfresco 12.4m² 1.3sq

Total 271.0m² 29.2sq

Listed details based on Sheffield facade floorplan (illustrated)

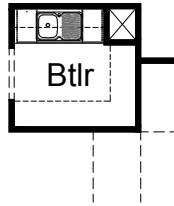
FLOORPLAN OPTIONS

We personalise our floorplans.

Talk to us about our huge range of ready-to-go design options or simply visit www.burbank.com.au/south-australia for more details.

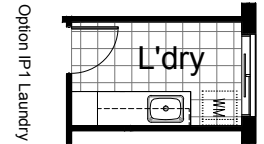
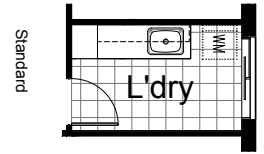
OPTION K1

Provide Butlers pantry upgrade with 32mm laminate bench top and 1no. bowl sink with drainer and tiled splashback to suit.
Provide 1no. 800mm base cupboard, 2no. 350mm base cupboards, 2no. 350mm overhead cupboards, 1no. 800mm overhead cupboard including 4no. 450mm shelving including returns.



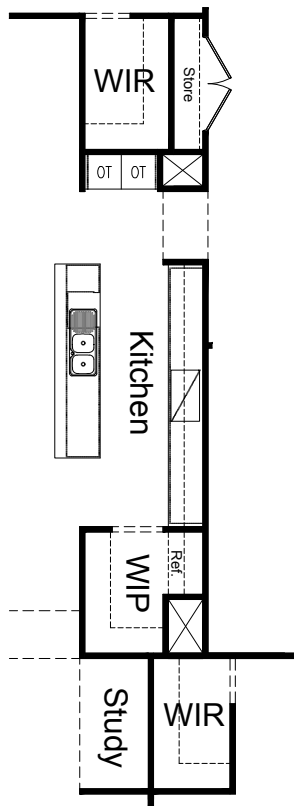
OPTION LD2

Provide Laundry upgrade with laminated insert trough, 1no. 400mm broom cupboard, 2no. 800mm base cupboards, 2no. 800mm overhead cupboards. Additional tiled splash back and bench top to suit.
NOTE: Available for both standard house layout and Option IP1



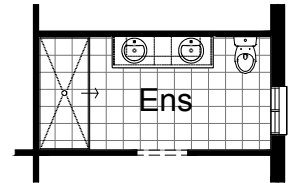
OPTION K2

Provide Kitchen upgrade with 5no. 900mm base cupboards and 2no. wall oven towers with Ref space relocated to WIP. Provide 900mm hot plate with retractable rangehood above. Tiled splashback to suit including returns.
Removed MW provision to island bench and replaced with 900mm base cupboard. Remove second store cupboard to create 1 large storage cupboard with Bed 4 WIR extended by 150mm.



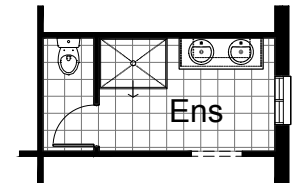
OPTION ENS1

Provide 2000mm x 900mm tiled shower in Ensuite with 1782 vanity unit with drawers and 2no. basins in lieu of standard.



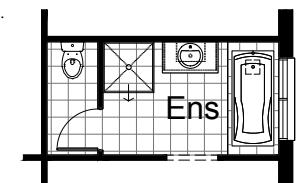
OPTION ENS2

Provide 900mm x 1200mm tiled shower in Ensuite. Provide enclosed WC with 720mm hinged door and 1482mm vanity unit with 2no. basins. Relocate ensuite opening by 970mm.



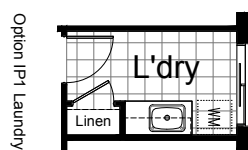
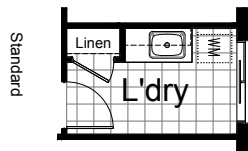
OPTION ENS3

Provide enclosed WC with 720mm hinged door and 982mm vanity unit. Relocate ensuite opening by 380mm. Provide 1675 bath with hob and Change window size to 1200mm (H) x 1450mm (W) (ASW1215).



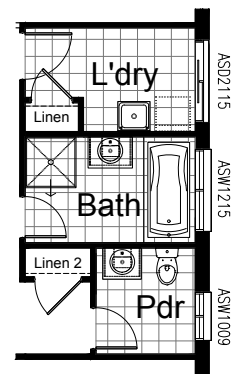
OPTION LD1

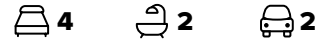
Provide Laundry upgrade with laminated insert trough, 1no. 800mm base cupboard, 1no. 300mm base cupboard, 1no. 800mm overhead cupboard, 1no. 300mm overhead cupboard with additional tiled splash back and bench top to suit.
NOTE: Available for both standard house layout and Option IP1 & Option IP3



OPTION IP1

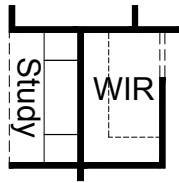
Provide alternative layout to Laundry, Bath, WC, & Vest area. Layout includes Powder, Bath, & Laundry. 900mm x 900mm tiled shower base. 1no. 782 vanity unit to Bath and 1no. 682 vanity unit to Powder. Second Linen to passage with 820mm door.





OPTION IP2

Provide built in desk option for study with 2no. 450mm drawer units and 32mm laminate bench top.
NOTE: NOT available with Option IP5.

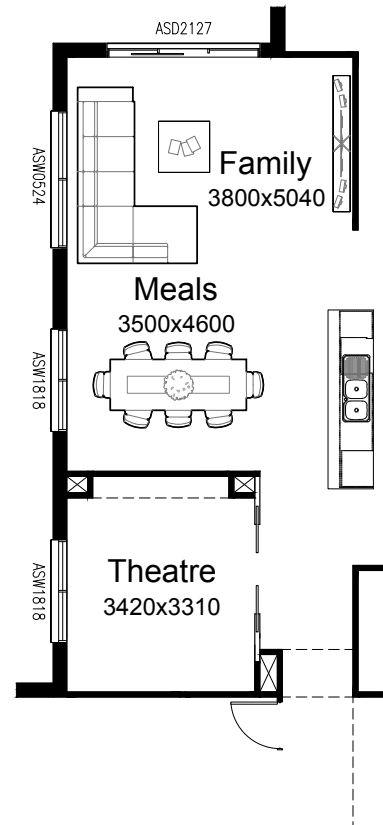
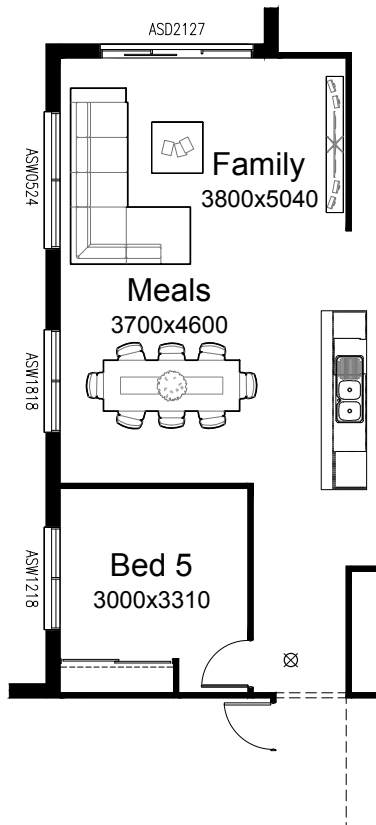


OPTION IP4

Convert standard Media room into Theatre room including double 820mm cavity sliding doors, additional plaster lined stud wall and feature wall with plaster columns and bulkhead
NOTE: This Option reduces Meals width by 300mm.

OPTION IP3

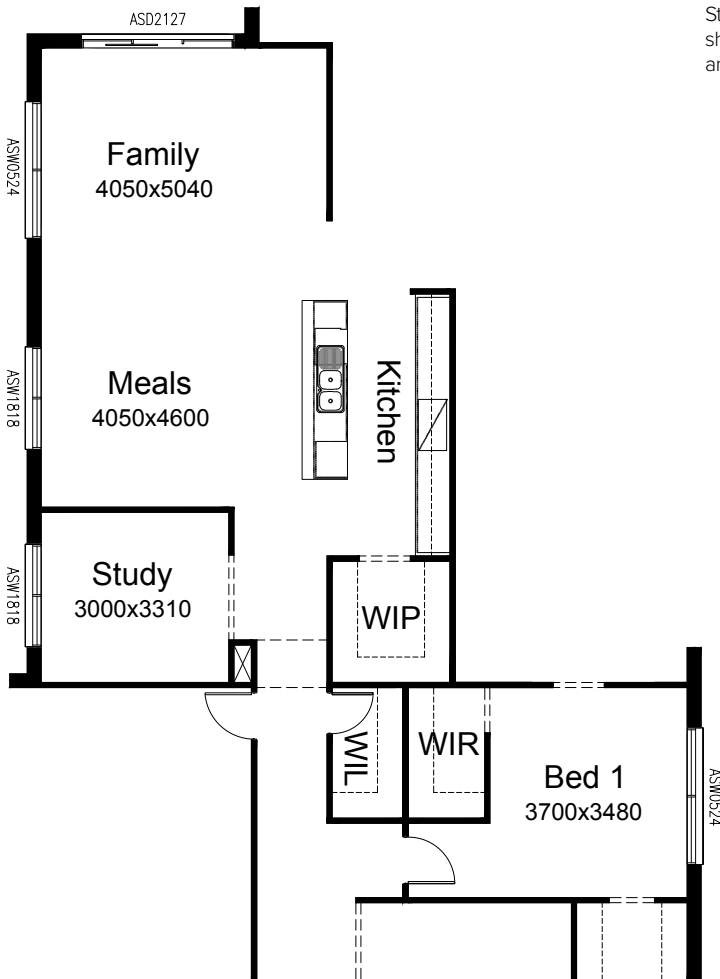
Provide Bed 5 in lieu of Media room with 1no. 820mm flush panel hinged door and site built plaster lined robe with 1no. hanging rail and shelf with 2no. sliding doors and 1200mm (H) x 1810mm (W) sliding window (ASW1218) in lieu of standard 1800mm x 1810mm sliding window. Provide additional smoke detector.
NOTE: This Option reduces Meals width by 100mm.
Relocate Bed 5 window 240mm to suit.



OPTION IIP5

Convert standard Media room into Study. Convert previous study to WIL with 720mm flush panel hinged door & additional plaster lined stud wall with 450mm shelving.

NOTE: This Option reduces Bed 1 by 130mm and extends Family/Meals by 500mm. Adjust Meals window 480mm to suit. Adjust Study window 240mm to suit.



OPTION IP6

Provide Kitchen & Butlers pantry upgrade with 2no. 600mm oven towers, 4no. 900mm base cupboards, 2no. 900mm overhead cupboards, 1no. 900mm cooktop with retractable rangehood and tiled splashback to suit. 2no. 450mm base cupboards with 1800mm high open adjustable/fixed 300mm deep shelves and 4no. 450mm shelves. 1no. single bowl sink with drainer and tiled splashback to suit in Butlers. Store and previous Ref space to become WIL with 4no. 450mm shelves and 4no. 300mm shelves. Bed 4 WIR layout changes to suit.

