

Facades available:	
Ashley, Atherton, Camden, Holton	
Kelsey	
Overall home width	13.43m
Overall home length	23.39m

Residence	233.9m ²	25.2sq
Garage	35.9m ²	3.9sq
Porch	4.5m ²	0.5sq
Alfresco	23.7m ²	2.6sq
Total	297.8m²	32.1sq

FLOORPLAN OPTIONS

We personalise our floorplans. Talk to us about our huge range of ready-to-go design options.

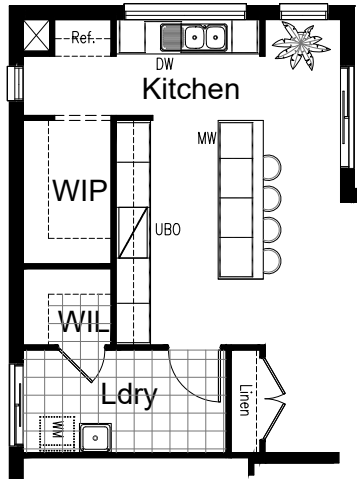
Listed details based on Ashley facade floorplan (illustrated)

*Copyright conditions. All photos and illustrations are representative only. Floor plans and specifications may be varied by Burbank without notice, the dimensions are diagrammatic only and a Building Contract with final drawings will display correct dimensions and detail. All designs are the property of Burbank and must not be used, reproduced, copied or varied, wholly or in part without written permission from an authorised Burbank representative. Copyright Burbank Australia (NSW) Pty Ltd. ABN 88 610 822 770. NSW BL 295627C ACT BL 2016566.

Call 13 BURBANK
Visit burbank.com.au

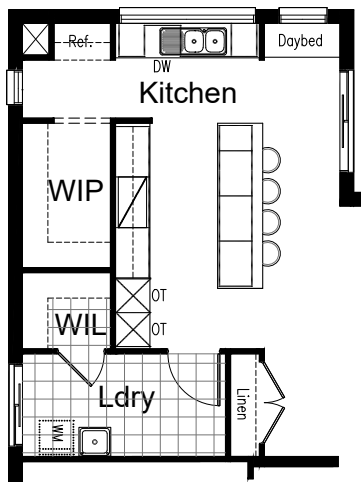
OPTION K-1

Provide Kitchen upgrade option with additional microwave provision and 1No. open shelf above the refrigerator. Kitchen island now includes, microwave provision with pot drawer, 3No. 700mm base cupboard, and bench top to suit. 1No. 450mm set of drawers to be replace 450mm base cupboard. Kitchen fit out to Internal wall (elevation B) to remain standard.
Notes:
Kitchen Nook window to be inline with Kitchen's window (not in brick course).



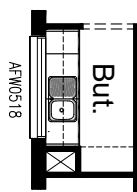
OPTION K-2

Provide Kitchen upgrade option with oven towers and daybed. Kitchen Internal wall (elevation B) includes: 2No. oven towers with 600mm ovens and microwave provisions, 3No. 900mm base cupboards, 2No. 900mm overhead cupboards and 1No. 900mm retractable rangehood 1No. open shelf above fridge space. Kitchen nook daybed includes: 2No. 600mm T.V cabinet cupboards, and 32mm laminate benchtop. Kitchen fit out to external wall (elevation A) and kitchen island (elevation D) to remain standard.
Note:
Kitchen Nook window to be inline with Kitchen's window (not in brick course).



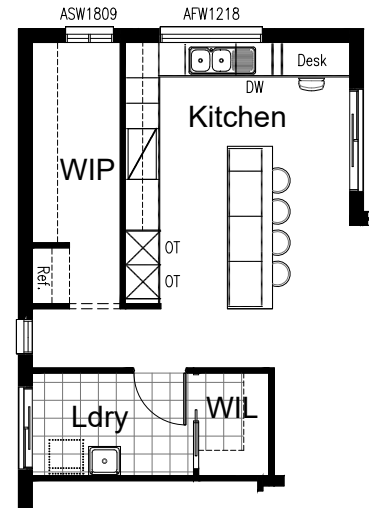
OPTION K-3

Provide Butlers Panty option in lieu of Walk-in Pantry including 2No. 800mm base cupboards, 1No. 400mm base cupboard, 2No. 800mm overhead cupboards, 1No. 400mm overhead cupboard, 1No. single bowl sink with drainer, additional tiled splashback and bench top to suit. Provide AFW0518 fixed panel window.
Notes:
Option only available in conjunction with K-1, K-2 and standard kitchen layout.



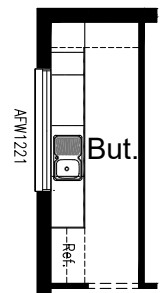
OPTION K-4

Provide L-shaped Kitchen upgrade option including: 2No. oven towers with 600mm ovens and microwave provisions, 3No. 900mm base cupboards, 1No. 900mm blind base cupboard, 1No. 450mm base cupboard, 1No. 450mm set of drawers, 1No. 150mm wine rack, 3No. 900mm overhead cupboards, 1No. 600mm laminated open shelves, additional bench top and tiled splashback to suit. Ref. space relocated to WIP with open shelf over. Provide 1No. ASW1809 sliding windows to WIP and convert kitchen window to AFW1218 ILO standard. Remove AFW1209 window from kitchen. Remove nib wall (elevation A) and provide continues benchtop.
Note:
-Option relocating the WIL and removes the Linen closet.
-Island to remain standard.



OPTION K-5

Provide Butlers Pantry option in lieu of Walk-in Pantry with: 3No. 900mm base cupboards and 1No. 400mm base cupboard, 1No. open shelf above fridge space. additional 450mm deep bench top and tiled splashback to suit. 1800mm(h) laminated shelving from wall to wall. Provide 1No. AFW1221 fixed windows to butlers ILO standard.
Note:
-Option only available in conjunction with K-4
-Convert Ref. nib wall to laminate end panel.



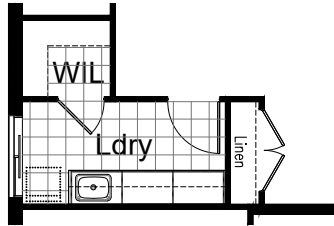
OPTION LD-1

Provide Laundry upgrade option with laminate base cupboards and stainless steel inset trough including:

3No. 900mm base cupboards,
3No. 900mm overhead cupboards,
additional bench top and tiled splashback to suit.

Notes:

Option only available in conjunction with K-1,K-2 and standard kitchen layout.



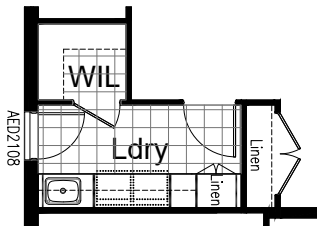
OPTION LD-2

Provide Laundry upgrade option with laminate base cupboards and stainless steel inset trough including:

3No. 900mm base cupboards,
3No. 900mm overhead cupboards,
1No. 700mm full height laminate Linen cupboard with 5No. 450mm shevles,
additional bench top and tiled splashback to suit.

Notes:

Option only available in conjunction with K-1,K-2 and standard kitchen layout.



OPTION LD-3

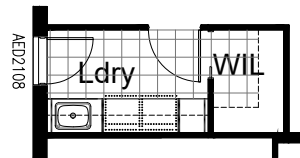
Provide Laundry upgrade option with laminate base cupboards and stainless steel inset trough including:

1No. 900mm base cupboard,
1No. 450mm base cupboard,
3No. 900mm overhead cupboards,
additional bench top and tiled splashback to suit. Option also provides open space under bench for washer and dryer side-by-side and raises the bench height to 950mm from FFL (kicker height raises).

Provides AED2108 entry door in lieu of sliding door.

Notes:

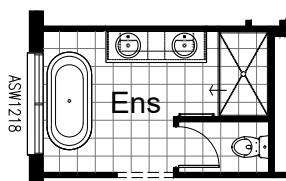
Option only available in conjunction with K-4.



OPTION ENS-1

Provide Ensuite upgrade option to Bedroom 1 including rearranged layout with 1510x900mm wall to wall tiled shower base, freestanding bath, relocated WC with 720mm hinged door and 1782mm vanity with double basin.

Remove ASW1809 sliding window and provide ASW1218 sliding window.



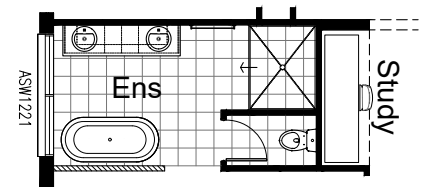
OPTION ENS-2

Provide Ensuite upgrade option to Bedroom 1 including

Rearranged layout with 1510x1200mm wall to wall tiled shower base, freestanding bath with 1020mm(h) dwarf wall ilo standard wall, relocated WC with 720mm hinged door and 2082mm vanity with double basin.

Remove ASW1809 sliding window and provide ASW1221 sliding window.

Option takes 1.87sqm (660mm) from study to accommodate.

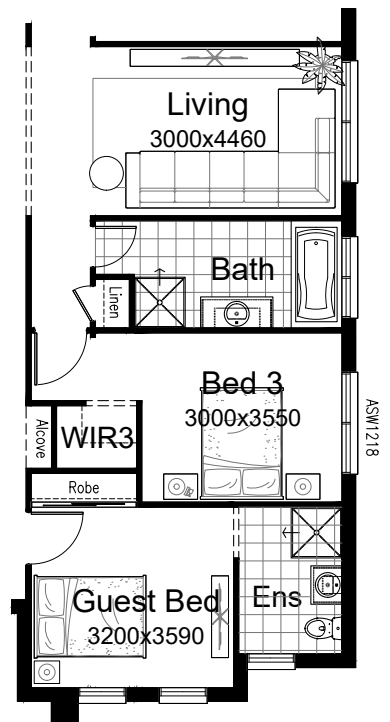


OPTION IP1-1

Convert Bed 2 to Guest Bed with ensuite and a built-in Robe with sliding doors and 450mm shelf with hanging rail.

Ensuite includes 900x900mm tiled shower base, 682mm vanity and WC, WIR 3 to be relocated to WIR 2 and provide alcove to the entry. Increase total area by 1.84sqm by projecting ensuite wall to the front by 960mm and decreasing the Guest bedroom's width by 120mm. Living area to be decreased by 200mm to accommodate.

Provide AS1218 sliding window to bed 3 ilo standard.



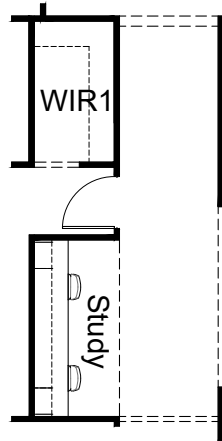
OPTION IP1-2

Provide floor plan option with mirrored Study and WIR1.

Provide built-in joinery option to Study including:
1No. 600mm deep 32mm thick laminate desk,
2No. 450mm drawer units below desk,
2No. 300mm deep 60mm thick open shelves over desk.

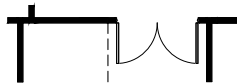
2No. 450mm open shelf units,

Note: Option is not available with IP1-5 & IP1-6.



OPTION IP1-3

Provide 2No. 720mm hinged door ILO bulkhead to Meals area.



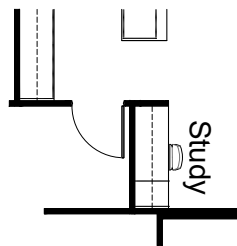
OPTION IP1-4

Provide Study Nook option in lieu of Linen closet with built-in joinery including
1No. 600mm deep, 32mm thick laminate desk

1No. 450mm drawer unit below desk,
2No. 300mm deep, 60mm thick open shelves over.

Notes:

-Option available only with K-1, K-2 and standard kitchen layout.



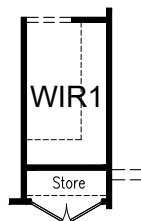
OPTION IP1-5

Provide Store to Garage by taking 600mm from WIR1.

Provide 2No. 620mm hinged doors.

Note:

Option is not available with IP1-2.

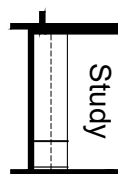


OPTION IP1-6

Provide built-in joinery option to Study including:
1No. 600mm deep 32mm thick laminate desk,
1No. 450mm drawer units below desk,
2No. 300mm deep 60mm thick open shelves over desk.

Note

Option is not available with IP1-2



OPTION IP1-7

Provide built-in joinery upgrade option to Family including:

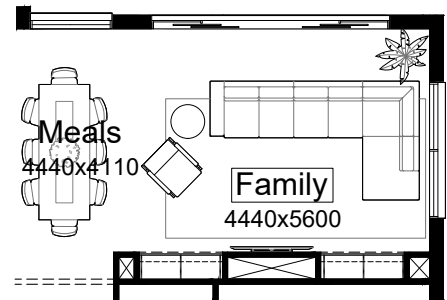
2No. 450mm deep 32mm thick laminate bench top,

4No. 700mm T.V cabinet cupboards,

4No. 300mm deep 60mm thick open shelves over

2No. 470mm wide x 480mm deep voids and

1No. 1760mm wide x 480mm deep void to accommodate TV units and open shelves.



OPTION IP1-8

Provide built-in joinery upgrade option to Living including:

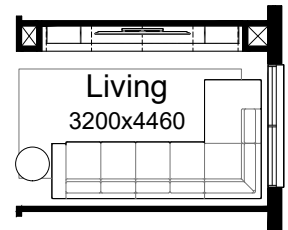
1No. 450mm deep 32mm thick laminate bench top,

2No. 900mm T.V cabinet cupboards,

2No. 800mm T.V cabinet cupboards,

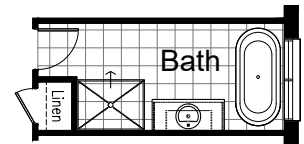
2No. 600mm open shelf units,

2No. 300mm deep 60mm thick open shelves over.



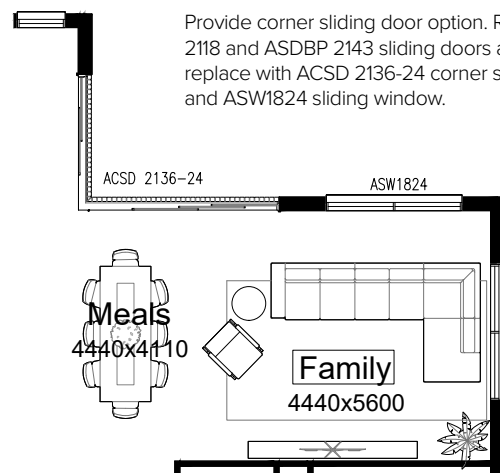
OPTION IP1-9

Provide Bath upgrade option including 1200x900mm tiled shower base, freestanding bath ILO standard.



OPTION IP1-10

Provide corner sliding door option. Remove ASD 2118 and ASDBP 2143 sliding doors and replace with ACSD 2136-24 corner sliding door and ASW1824 sliding window.



OPTION IP1-11

Provide floor plan option with mirrored rear section of the home.

Note:

It is an exact mirror designed to capture solar access. All options are still available.

