

**Facades available:**

Callington, Harrogate, Kent

Lancaster, Sheffield, Swansea

Wiltshire, Eastwood

**Overall home width 8.87m**

**Overall home length 20.99m**

Residence 133.7m<sup>2</sup> 14.4sq

Garage 22.5m<sup>2</sup> 2.4sq

Porch 5.0m<sup>2</sup> 0.5sq

**Total 161.2m<sup>2</sup> 17.4sq**

Listed details based on Sheffield facade floorplan (illustrated)

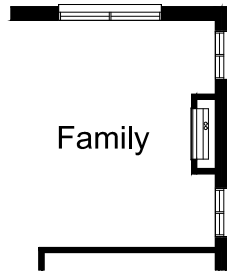
**FLOORPLAN OPTIONS**

We personalise our floorplans.

Talk to us about our huge range of ready-to-go design options or simply visit [www.burbank.com.au/south-australia](http://www.burbank.com.au/south-australia) for more details.

**OPTION IP1**

Provide Real Flame Inspire 900 gas fireplace, 400mm off floor level in a 1400mm x 420mm boxed out plaster wall with a 4 sided black fascia to Family room side wall.  
Provide 2no. 1809 ASW to Family.



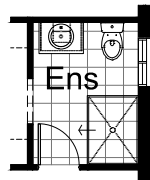
**OPTION G1**

Provide extension to Garage to create additional Storage area.  
Increases area by 4.58m<sup>2</sup>.  
Increases width by 850mm.



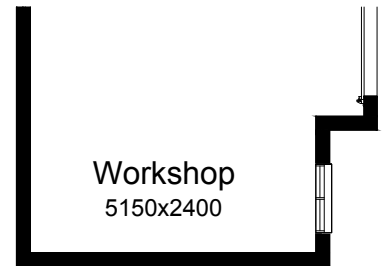
**OPTION ENS1**

Provide Ensuite upgrade including 1200mm x 900mm tiled shower base with relocation of vanity and window.



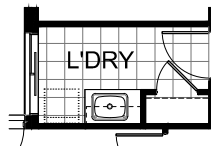
**OPTION G2**

Provide extension to Garage to create Workshop area including additional AAWF2015 Aluminium awning window.  
Increases length by 2400mm.  
Increases area by 13.51m<sup>2</sup>.



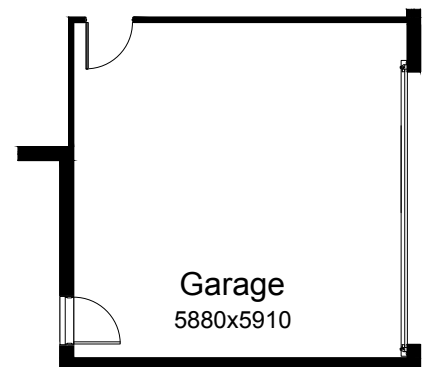
**OPTION LD1**

Provide Laundry upgrade with laminated insert trough, 1no. 900mm base cupboard, 1no. 900mm overhead cupboard with additional tiled splash back and bench top to suit.



**OPTION G3**

Provide extension to Garage to create Workshop area including additional AAWF2015 Aluminium awning window.  
Increases length by 2400mm.  
Increases area by 16.00m<sup>2</sup>.



**OPTION EP1**

Provide Alfresco option with 2no. brick piers and earth floor to Alfresco.  
Increases area by 13.50m<sup>2</sup>.  
Increases width by 3000mm.

