

Facades available:

Callington, Eastwood, Harrogate
Kent, Lancaster, Sheffield
Swansea, Wiltshire

Overall home width 26.63m

Overall home length 10.55m

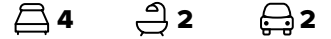
Residence	195.0m ²	21.0sq
Garage	37.5m ²	4.0sq
Porch	5.0m ²	0.5sq
Verandah	2.6m ²	0.3sq
Total	240.0m²	25.8sq

FLOORPLAN OPTIONS

We personalise our floorplans.

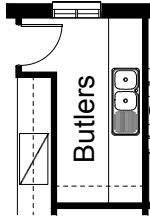
Talk to us about our huge range of ready-to-go design options or simply visit www.burbank.com.au/south-australia for more details.

Listed details based on Sheffield facade floorplan (illustrated)



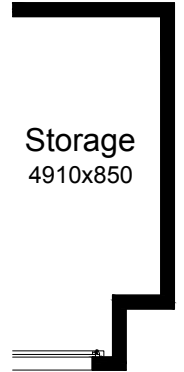
OPTION K1

Provide Butlers Option in lieu of standard WIP with additional
3no. 900mm base cupboards,
1no. 150mm base cupboard,
Double bowl sink
5no. laminated wall to wall shelves,
Additional tiled splash back and bench top to suit.



OPTION G1

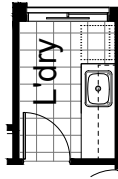
Provide extension to Garage to create additional Storage area.
Increases area by 4.58m².
Increases width by 850mm.



Storage
4910x850

OPTION LD1

Provide Laundry upgrade with Laminated insert trough,
2no. 800mm base cupboards,
2no. 800mm overhead cupboards, Additional tiled splash back and bench top to suit.



OPTION G2

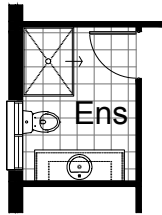
Provide Workshop extension to Garage including AAWF2015 aluminium feature awning window.
Increases width by 2400mm.
Increases area by 13.51m².



Workshop
5150x2400

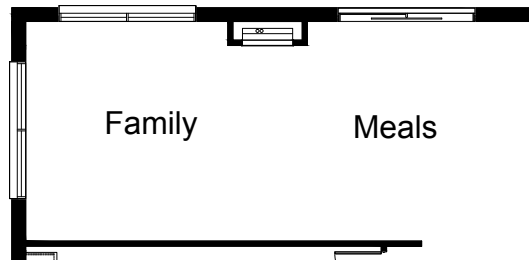
OPTION ENS1

Provide Ensuite upgrade with 900mm x 1200m tiled shower base,
1no. 1582mm wide vanity basin,
1no. 820 flush panel hinged door to suit.



OPTION IP1

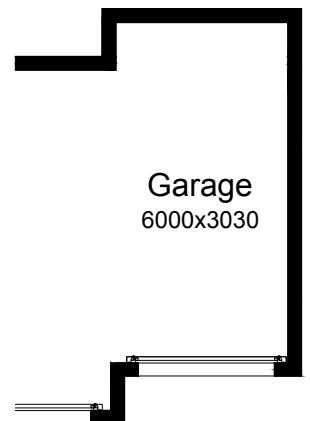
Provide Real Flame Inspire 900 gas fireplace, 400mm off floor level in a 1400mm x 420mm boxed out plaster wall with a 4 sided black fascia to Family/Meals room rear wall.



Family **Meals**

OPTION G3

Provide triple car Garage including additional roller door to front.
Increases area by 20.51m².
Increases width by 3030mm.



Garage
6000x3030