

Facades available:	
Ashley, Atherton, Camden, Holton	
Kelsey	
Overall home width	12.41m
Overall home length	23.39m

Residence	191.0m ²	21.0sq
Garage	36.3m ²	3.9sq
Porch	3.9m ²	0.4sq
Alfresco	13.0m ²	1.4sq
Total	244.0m²	26.3sq

FLOORPLAN OPTIONS

We personalise our floorplans. Talk to us about our huge range of ready-to-go design options.

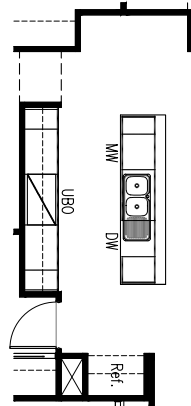
Listed details based on Ashley facade floorplan (illustrated)

*Copyright conditions. All photos and illustrations are representative only. Floor plans and specifications may be varied by Burbank without notice, the dimensions are diagrammatic only and a Building Contract with final drawings will display correct dimensions and detail. All designs are the property of Burbank and must not be used, reproduced, copied or varied, wholly or in part without written permission from an authorised Burbank representative. Copyright Burbank Australia (NSW) Pty Ltd. ABN 88 610 822 770. NSW BL 295627C ACT BL 2016566.

Call 13 BURBANK
Visit burbank.com.au

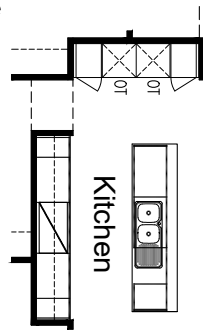
OPTION K1

Provide Kitchen upgrade option with additional laminated open shelf above refrigerator, 1no. microwave provision with 1no. pot drawer and 1no. 300mm wide cupboard ilo 1no. 900mm wide cupboard to island bench.



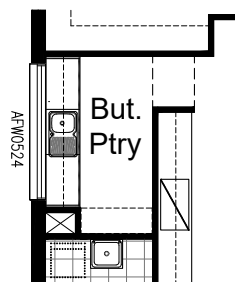
OPTION K2

Delete Study Nook and provide 2no. laminated microwave and wall oven tower and 2no. 450mm laminate cupboards with 4No. 450mm shelves. Delete 900mm under bench oven and provide 1no. 900mm base cupboard. Island bench unchanged.



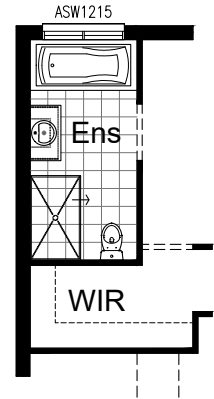
OPTION K3

Provide Butlers Panty with 2no. 900mm wide base cupboards, 1no. 800mm wide base cupboard 2no. 900mm overhead cupboards, 1no. 800mm overhead cupboard, 1no. single bowl sink with drainer, additional tiled splashback and bench top to suit. Provide 1no. 514x2410 aluminium fixed window.



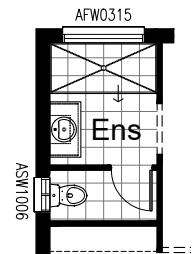
OPTION ENS-1

Delete WIR window and WIR shelving on the left and provide L-shape shelving to WIR to suit. Extend ensuite in length by 750mm. Relocate WC and provide 1500mm tiled shower base ilo standard, additional bath hob to suit and 1no. 982mm wide vanity unit ilo standard. Delete standard window and provide 1no. 1200x1450 aluminium sliding window.



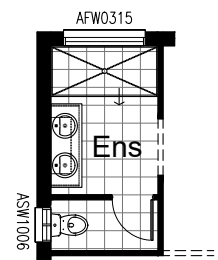
OPTION ENS-2

Provide wall to wall tiled shower base ilo standard, 1no. 982mm wide vanity unit ilo standard and enclose WC with 1no. 720mm wide flush panel hinged door and provide 1no. 1027x610 aluminium sliding window. Delete standard window and provide 1no. 300x1450 aluminium fixed window.



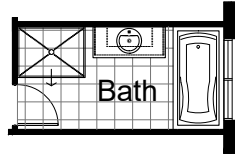
OPTION ENS-3

Delete WIR shelving on the left and extend ensuite in length by 470mm. Provide wall to wall tiled shower base ilo standard, 1no. 1482mm wide vanity unit with 2no. basins ilo standard and enclose WC with 1no. 720mm wide flush panel hinged door and provide 1no. 1027x610 aluminium sliding window. Delete standard window and provide 1no. 300x1450 aluminium fixed window.



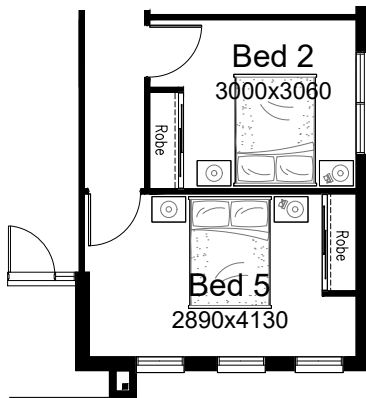
OPTION IP1-1

Delete Linen cupboard and extend Bathroom in width.
Provide 1200mm wide tiled in shower base ilo standard and
1no. 1282mm wide vanity unit ilo standard.



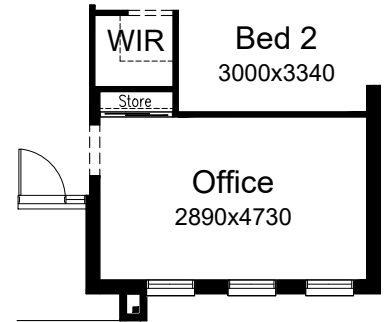
OPTION IP1-2

Convert Sitting to Bed 5.
Provide 1no. 920mm wide flush panel hinged door ilo
bulkhead opening and provide Robe to suit.
Bed 2 hinged door moves and the size reduces in
width by 710mm to accommodate Passage. Alcove to
Entry also removed.



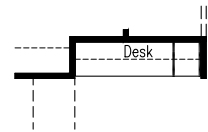
OPTION IP1-4

Convert Sitting to Home Office.
Delete Robe and Alcove and
provide WIR to Bed 2 to suit.
reduce width of bulkhead opening to 900mm and
provide store cupboard with sliding doors and 4No.
shelves.
Bed 2 reduces in width by 430mm to accommodate.



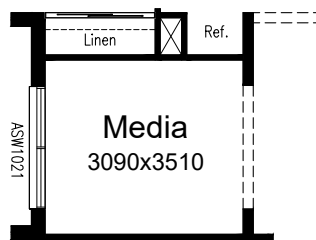
OPTION IP1-5

Provide Study nook built-in desk and cabinetry option
with 600mm deep 32mm laminate bench top,
1no. 450 wide drawer unit below and
2no. full-width 300mm deep, 60mm thick open shelves
above.



OPTION IP1-3

Convert Bed 4 to Media Room.
Delete Robe to Bed 4.
Provide bulkhead opening ilo
1no. 920mm wide flush panel hinged door and
1no. 1027x2170 aluminium sliding window ilo standard.



OPTION LD-1

Provide stainless steel inset trough
in 32mm laminated bench top,
1no. 900mm base cupboard,
1no. 900mm overhead cupboard and
additional tiled splash back and bench top to suit.

