

Facades available:

Callington, Eastwood, Harrogate	
Kent, Lancaster, Sheffield	
Swansea, Wiltshire	
Overall home width	12.35m
Overall home length	20.64m

Residence	169.6m ²	18.3sq
Garage	36.4m ²	3.9sq
Porch	5.2m ²	0.6sq
Alfresco	9.4m ²	1.0sq
Total	220.5m²	23.7sq

FLOORPLAN OPTIONS

We personalise our floorplans. Talk to us about our huge range of ready-to-go design options or simply visit www.burbank.com.au/south-australia for more details.

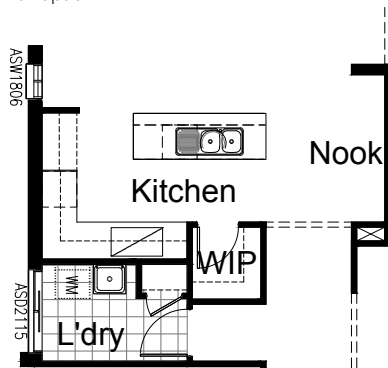
Listed details based on Sheffield facade floorplan (illustrated)

*Copyright conditions. All photos and illustrations are representative only. Floor plans and specifications may be varied by Burbank without notice, the dimensions are diagrammatic only and a Building Contract with final drawings will display correct dimensions and detail. All designs are the property of Burbank and must not be used, reproduced, copied or varied, wholly or in part without written permission from an authorised Burbank representative. Copyright Burbank Australia (SA) Pty Ltd. ABN 96 165 533 406. BLD 266709.

Call 13 BURBANK
Visit burbank.com.au

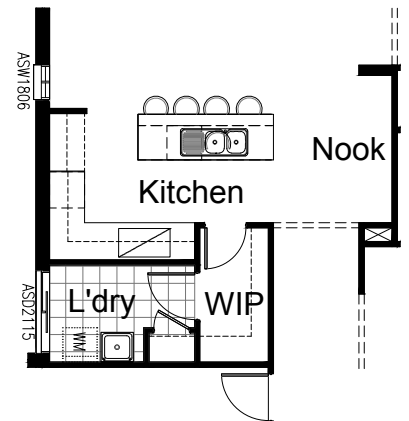
OPTION K1

Provide Kitchen option by Removing built in pantry and provide 180mm nib wall to be inline with opening to passage way to provide study / nook
Provide WIP with 300mm deep shelving & 1no. 720mm hinged door
Provide 'L' shaped kitchen with
1no. 450mm drawers
1no. laminated DW provision,
1no. 800mm base cupboard,
2no. 350mm base cupboard,
1no. open shelf above refrigerator space,
1no. laminated MW provision with pot drawer below,
1no. 900mm corner base cupboard,
1no. 300mm base cupboard,
1no. 900mm underbench oven,
1no. 900mm cooktop with 900mm retractable range hood above,
Additional bench top and tiled splash back to suit.
1no. 300mm overhead cupboard,
1no. 350mm overhead cupboard,
1no. 600mm corner overhead cupboard,
2no. 600mm overhead cupboard,
Relocate linen cupboard to inside laundry with 450mm deep shelving
Provide 1no. ASW1806 aluminium sliding window in lieu of ASW1815
NOTE: This cannot be selected with option K2



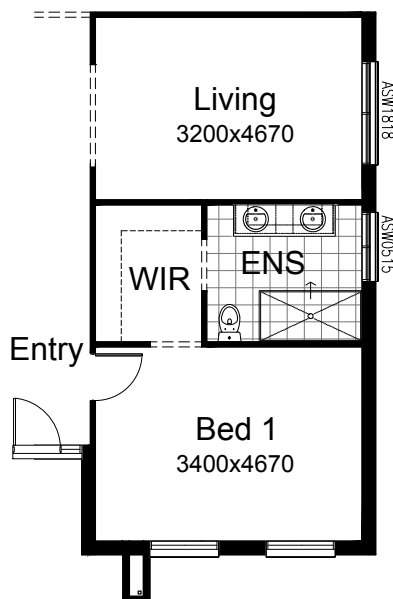
OPTION K2

Provide Kitchen option by Removing built in pantry and provide 180mm nib wall to be inline with opening to passage way to provide study / nook
Provide WTP with 300mm & 450mm deep shelving & 1no. 720mm hinged door
Reconfigure laundry from standard including relocated linen cupboard within laundry.
Provide 'L' shaped kitchen with
1no. 450mm drawers
1no. laminated DW provision,
1no. 800mm base cupboard,
2no. 350mm base cupboard,
1no. open shelf above refrigerator space,
1no. laminated MW provision with pot drawer below,
1no. 900mm corner base cupboard,
1no. 300mm base cupboard,
1no. 900mm underbench oven,
1no. 900mm cooktop with 900mm retractable range hood above,
Additional bench top and tiled splash back to suit.
1no. 300mm overhead cupboard,
1no. 350mm overhead cupboard,
1no. 600mm corner overhead cupboard,
2no. 600mm overhead cupboard,
Relocate linen cupboard to inside laundry with 450mm deep shelving
Provide 1no. ASW1806 aluminium sliding window in lieu of ASW1815
NOTE: This cannot be selected with option K1



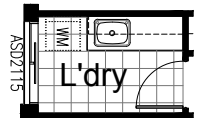
OPTION ENS2

Provide ensuite option by Decreasing width of Living by 260mm Decreasing Bed 1 by 100mm Increase ENS & WIR by 360mm and providing 1no. 1782mm vanity basin with 2no. basins in lieu of standard 900mm X 1800mm Tiled shower base in lieu of standard 1no. ASW0515 aluminium sliding window in lieu of ASW1006 to ensuite.
NOTE: This cannot be selected with option IP2



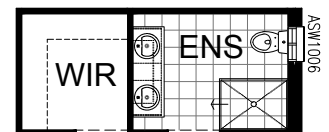
OPTION LD1

Provide Laundry option with 2no. 800mm base cupboards, 2no. 800mm overhead cupboards, Additional bench top and tiled splash back to suit.
NOTE: This cannot be selected with option K2



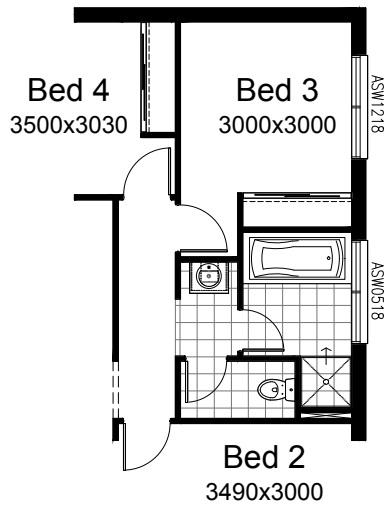
OPTION ENS1

Provide ensuite option by Removing ensuite opening in WIR and relocating entrance to Bed 1 1no. 1582mm vanity basin with 2no. basins in lieu of standard 900mm X 1200mm Tiled shower base in lieu of standard. NOTE: This cannot be selected with option IP2



OPTION IP1

Provide vestibule option in lieu of standard including
1no. 682mm vanity unit in lieu of standard
1no. ASW0518 aluminium sliding window in lieu of standard to bath
Reduce Bed 3 by 270mm and adjust opening for bedroom 4.
NOTE: This cannot be selected with option IP2.

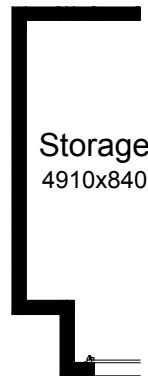


OPTION IP2

Provide floor plan option with Bed 1 to the rear of the home.
Option reduces length of Meals by 690mm
Relocate Living room to rear of home with bulkhead opening from Family / Meals area. Relocate Bed 1 to rear of home including alcove off the meals area. Provide walk through robe with 450mm deep shelving
Provide 1no. 1582mm vanity unit in lieu of standard to ensuite
1no. ASW1006 aluminium sliding window above toilet pan Relocate Bed 2, 3 & 4 to the front of the home with separate passage way.
Provide WIR to both bedrooms 2 and 3. Provide WIL with 450mm deep shelving and linen cupboard with 300mm deep shelving to passage way. Provide Vestibule in lieu of standard bathroom and relocate to front of home with 1no. 682mm vanity unit in lieu of standard
NOTE: This cannot be selected with option IP1, ENS1 & ENS2

OPTION G1

Provide storage area extension to Garage
Increases area by 4.53m².
Increases width by 840mm.



OPTION G2

Provide Workshop to Garage including
1no. AAWF1812 aluminium feature awning window.
Increases width by 2400mm.
Increases area by 13.51m².



OPTION G3

Provide triple car Garage including
1no. additional roller door to front.
Increases area by 23.62m².
Increases width by 3600mm.

