



FLOORPLAN OPTIONS

We personalise our floorplans. Talk to us about our huge range of ready-to-go design options.

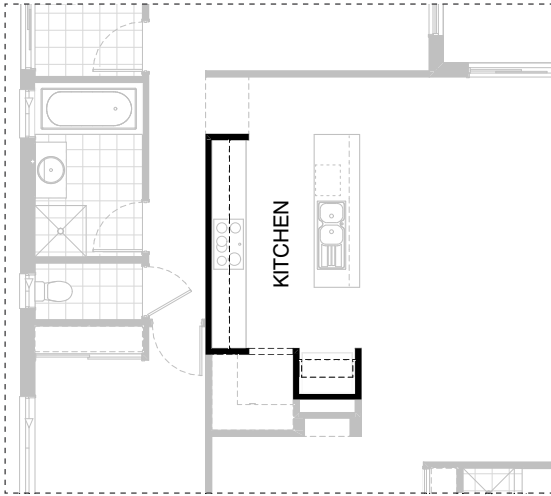
Listed details based on Traditional facade floorplan (illustrated)

Facades available:

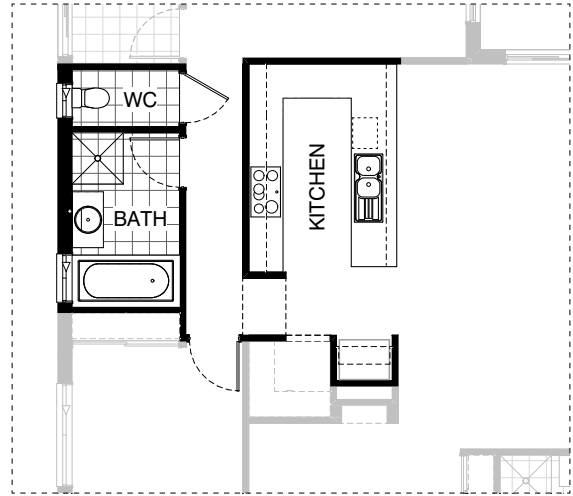
Coastal, Delta, Kingston, Nouveau	
Salisbury, Traditional, York	
Overall home width	12,830mm
Overall home length	23,630mm

Residence	200.2m ²	21.5sq
Garage	37.4m ²	4.0sq
Porch	3.7m ²	0.4sq
Alfresco	13.2m ²	1.4sq
Total	254.5m²	27.4sq

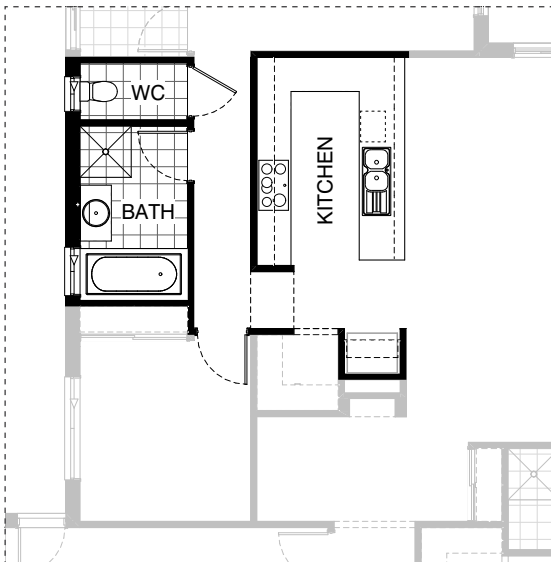
*Copyright conditions. All photos and illustrations are representative only. Floor plans and specifications may be varied by Burbank without notice, the dimensions are diagrammatic only and a Building Contract with final drawings will display correct dimensions and detail. All designs are the property of Burbank and must not be used, reproduced, copied or varied, wholly or in part without written permission from an authorised Burbank representative. Copyright Burbank Australia (QLD) Pty Ltd. ABN 77 103 014 615. QBCC 1046544.



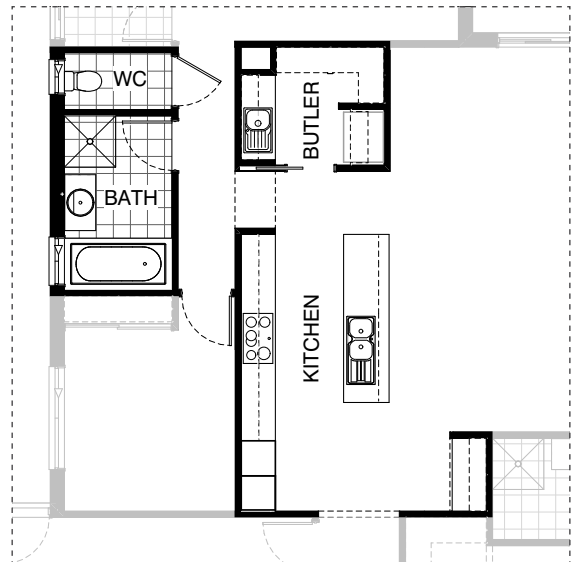
K01



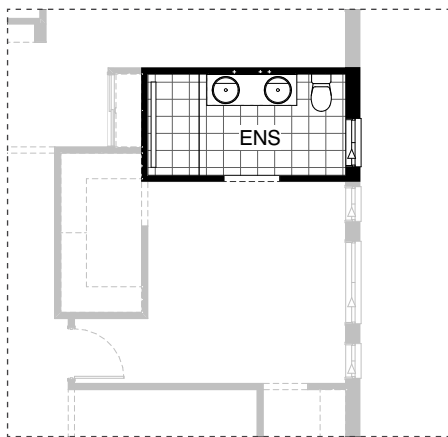
K02



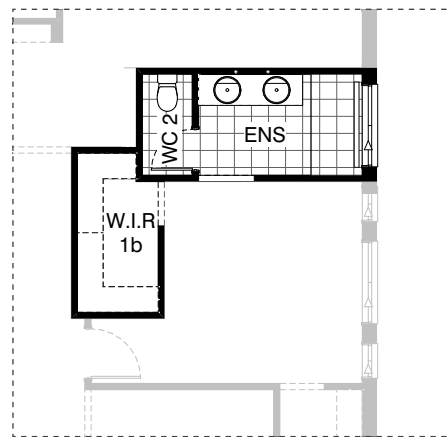
K03



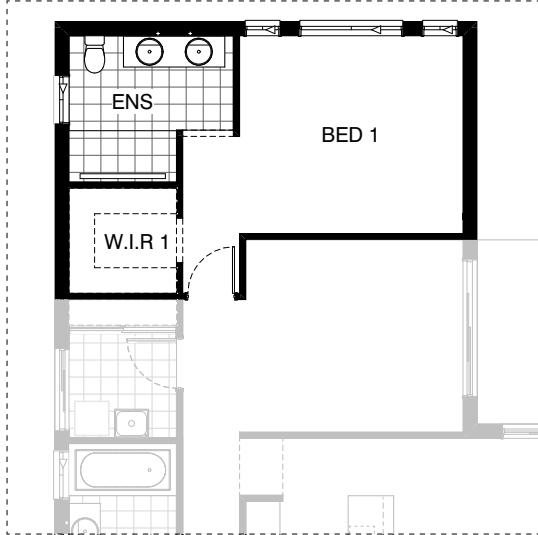
K04



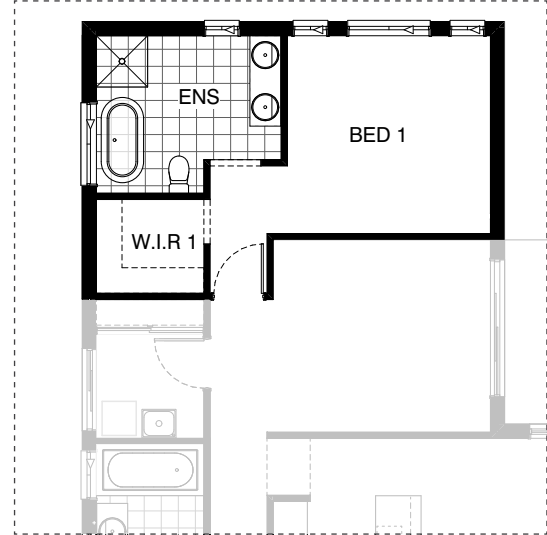
EN01



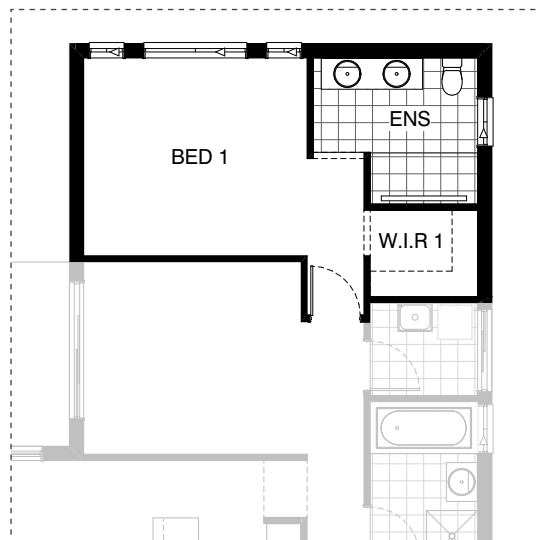
EN02



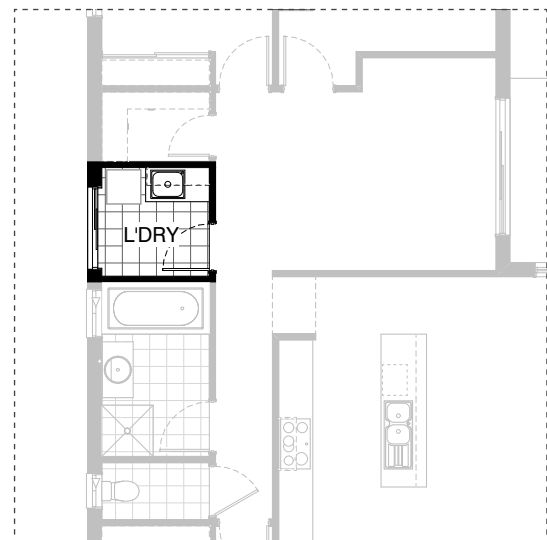
EN03



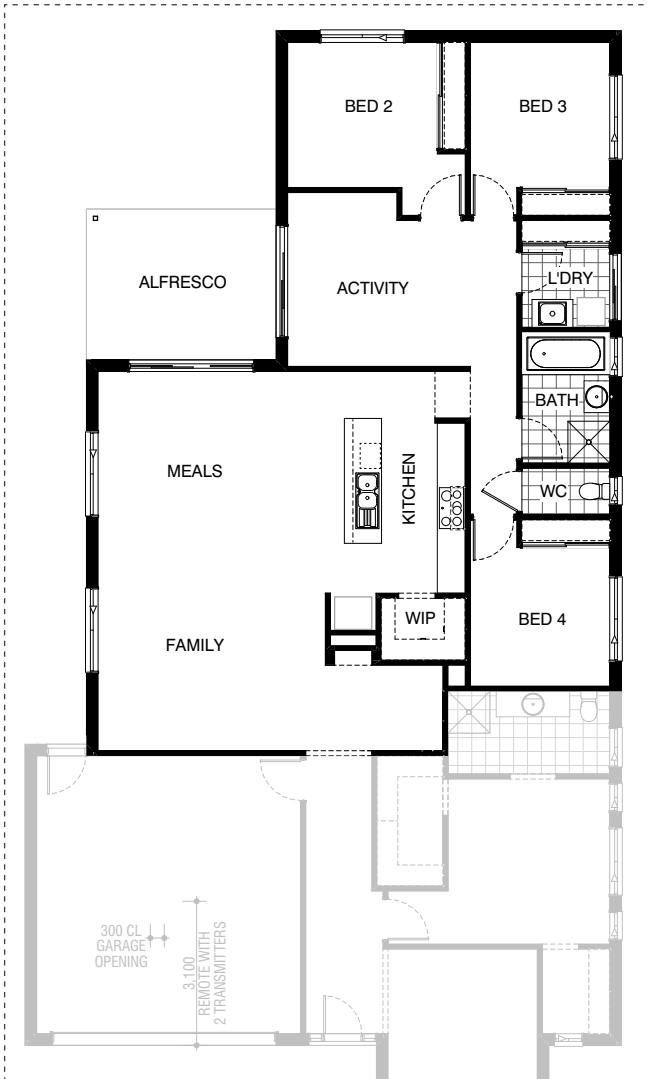
EN04



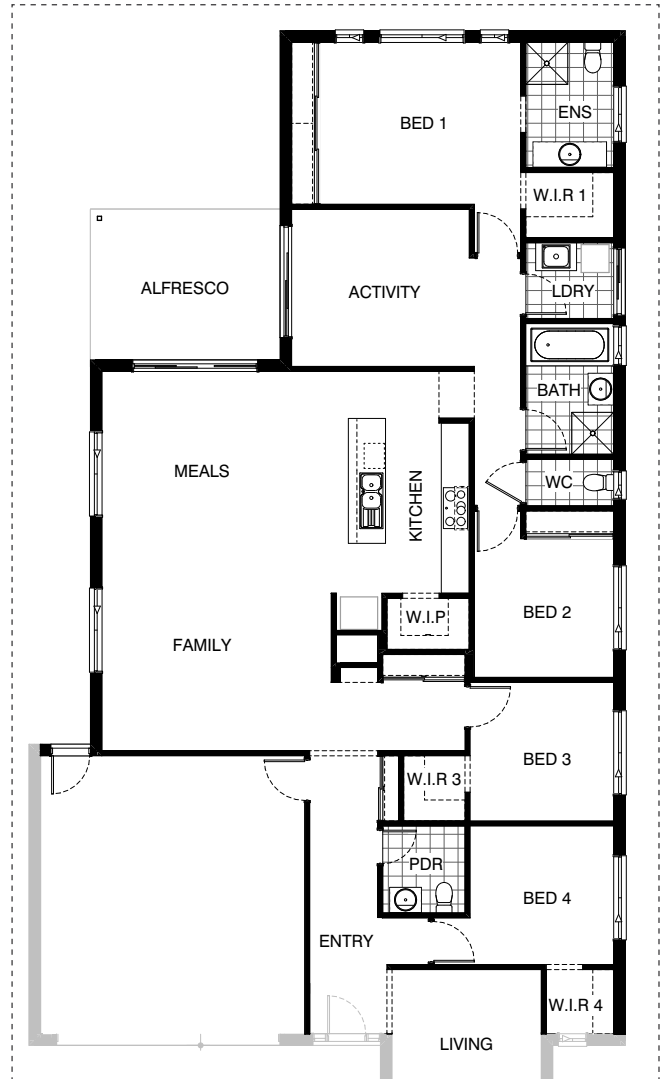
EN05



EN06



EX01



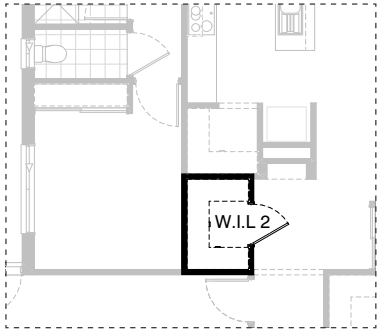
EX02



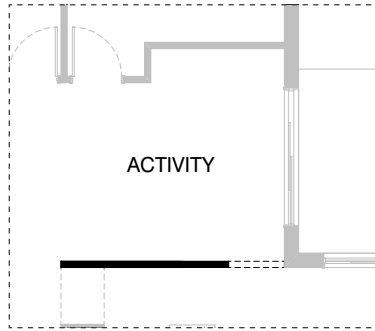
EX03



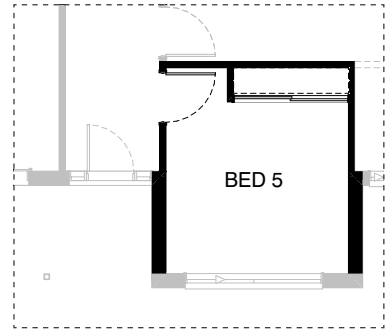
EX04



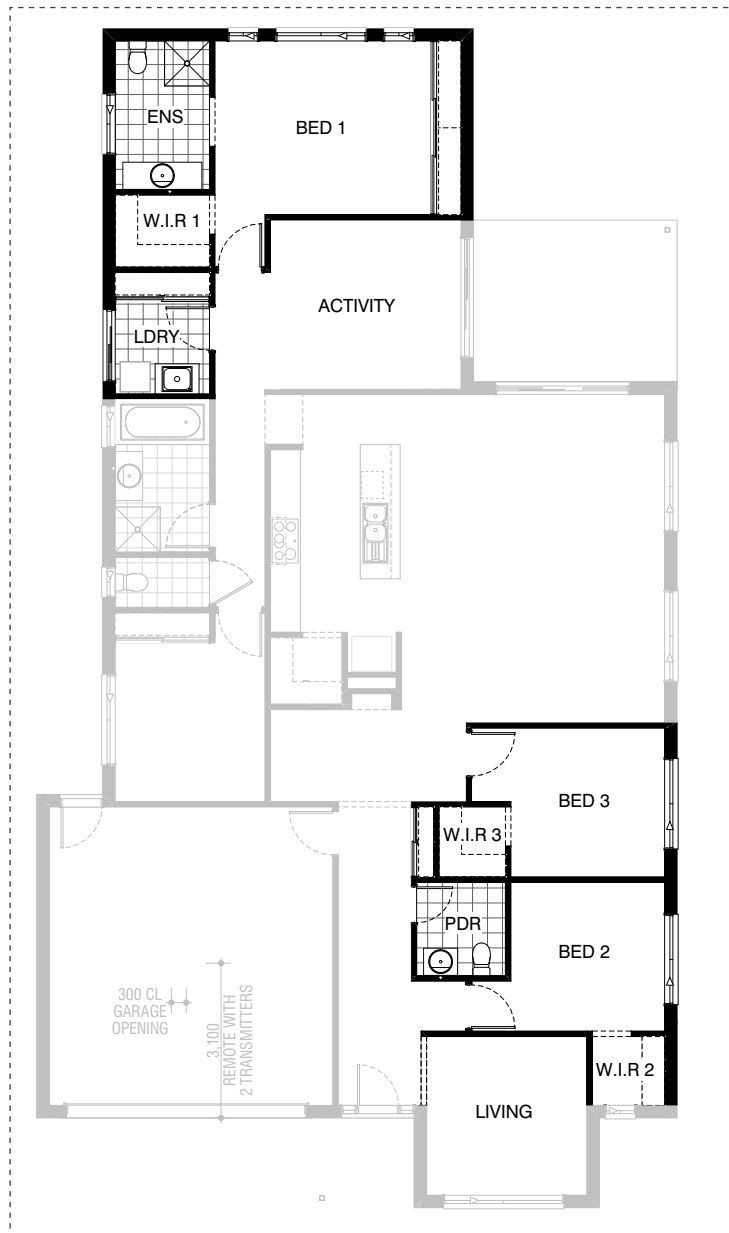
IN01



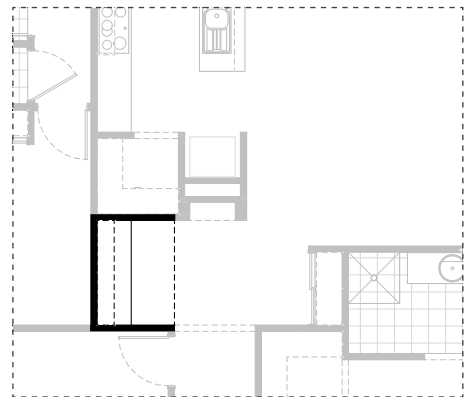
IN02



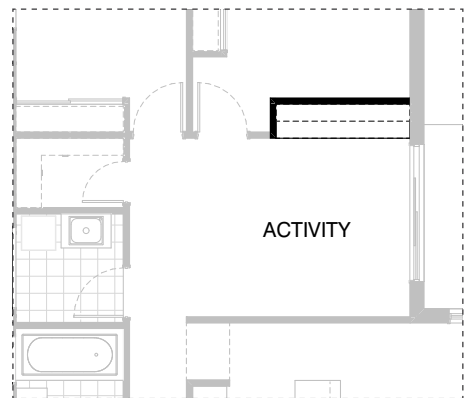
IN03



IN04



IN05



IN06

OPTION DESCRIPTIONS**K01 - Kitchen Option 01**

Provide Kitchen upgrade option, including: 900mm open shelf over Ref space, 2No. 900mm overhead cupboards, 2No. 450 overhead cupboards.

K02 - Kitchen Option 02

Provide U-shaped Kitchen upgrade option, including: additional benchtop and tiled splashback, laminate 900mm open shelf over Ref space, 900mm retractable rangehood, 900mm cooktop, dishwasher provision, microwave provision with pot drawer, 1No. 450mm drawer unit, 3No. 900mm base cupboards, 2No. 900mm base corner cupboard with bi-fold doors, 1No. 600mm base cupboard, 2No. 900mm overhead cupboards, 1No. 800mm overhead open shelf cupboard. Bathroom and WC flips locations.

K03 - Kitchen Option 03

Provide L-shaped Kitchen upgrade option, including: additional benchtop and tiled splashback, laminate 900mm open shelf over Ref space, 900mm retractable rangehood, 900mm cooktop, dishwasher provision, microwave provision with pot drawer, 1No. 450mm drawer unit, 3No. 900mm base cupboards, 1No. 900mm base corner cupboard with bi-fold doors, 1No. 700mm base cupboard, 1No. 350mm base cupboard, 2No. 900mm overhead cupboards, 1No. 800mm overhead open shelf cupboard. Bathroom and WC flips locations.

K04 - Kitchen Option 04

Provide Kitchen upgrade option with rearranged layout and Butler's Pantry in lieu of WIP, including: Kitchen: 900mm retractable rangehood, 900mm cooktop, dishwasher provision, 1No. 450mm drawer unit, 5No. 900mm base cupboards, 2No. 450mm base cupboards, 2No. 900mm overhead cupboards, 2No. 450mm overhead open shelf cupboards, 1No. 800mm open shelf overhead cupboard, 2No. 600mm laminate oven towers with microwave provisions. Bathroom and WC flips locations. Butler's: additional benchtop and tiled splashback, 1No. single bowl sink, laminate open shelf over Ref space, 1No. 900mm base cupboard, 1No. 450mm base cupboard, 2No. 450mm shelving, 2No. 300mm deep 60mm thick open shelving over sink, 820mm cavity sliding door. Option removes Study Nook and Linen cupboard and provides relocated Study Nook with bulkhead over and built-in joinery, including: 600mm deep 32mm thick laminate benchtop, 2No. 300mm deep 60mm thick open shelves over. Note: Option not available with options Ensuite02, Ensuite03, Ensuite04, Ensuite05, Internal01, Internal05, External01, External02

EN01 - Ensuite Option 01

Provide Ensuite upgrade option, including: 1582mm vanity with double basins, 1780mm x 900mm tiled shower base with grate drain. Note: Option not available with options Internal04, External02.

EN02 - Ensuite Option 02

Provide Ensuite upgrade option with rearranged layout, including: 1782mm vanity with 1830mm benchtop butting into one side wall and double basins, 1780mm x 900mm wall-to-wall tiled shower base with grate drain, enclosed WC with 720mm hinged door. Provide 350mm x 1450mm Aluminium sliding window over shower in lieu of standard. Remove built-in Linen cupboard. Note: Option not available with options Internal04, External02.

EN03 - Ensuite Option 03

Provide Ensuite upgrade option with rearranged layout, including: 1782mm vanity with double basins, 1890mm x 900mm tiled shower base with grate drain, relocated toilet pan. Provide 1800mm x 850mm Aluminium sliding window in lieu of standard. Remove built-in Robe with 450mm shelf, hanging rail and sliding doors. WIR 1 increases in size with additional 450mm shelving. Note: Option only available with Option Internal04. Option not available with options Internal03, External01, External02, External03.

EN04 - Ensuite Option 04

Provide Ensuite upgrade option with rearranged layout, including: 1500mm freestanding bath, 1582mm vanity with double basins, 900mm x 900mm tiled shower base, relocated toilet pan. Provide 1200mm x 610mm Aluminium sliding window and 1200mm x 1450mm Aluminium sliding window in lieu of standard. Remove built-in Robe with 450mm shelf, hanging rail and sliding doors. WIR 1 increases in size. Note: Option only available with Option Internal04. Option not available with options Internal03, External01, External02, External03.

EN05 - Ensuite Option 05

Provide Ensuite upgrade option with rearranged layout, including: 1782mm vanity with double basins, 1890mm x 900mm tiled shower base with grate drain, relocated toilet pan. Provide 1800mm x 850mm Aluminium sliding window in lieu of standard. Remove built-in Robe with 450mm shelf, hanging rail and sliding doors. WIR 1 increases in size. Note: Option only available with Option External02.

L01 - Laundry Option 01

Provide Laundry upgrade option with laminate base and overhead cupboards and stainless steel inset trough, including: 1No. 700mm base cupboard, 1No. 350mm base cupboard, 1No. 700mm overhead cupboard, 1No. 350mm overhead cupboard, additional benchtop and tiled splashback to suit. Note: Option not available with option External01

EX01 - External Option 01

Provide floor plan option which mirrors the rear of the home as shown. Note: Option not available with options Kitchen02, Kitchen03, Kitchen04, Ensuite03, Ensuite04, Ensuite05, Internal01, Internal04, Internal05, External02, External03.

EX02 - Ensuite Option 02

Provide floor plan option which mirrors the rear of the home with Bed 1 to the rear as shown. Note: Option not available with options Kitchen02, Kitchen03, Kitchen04, Ensuite01, Ensuite02, Ensuite03, Ensuite04, Internal01, Internal03, Internal04, Internal05, Internal06, External01, External03

EX03 - External Option 03

Provide corner sliding door option. Remove 2110mm x 2690mm and 2110mm x 2410mm Aluminium sliding doors and replace with 2107mm-3610mm x 2410mm Aluminium corner sliding stacker door. Provide 2No. steel posts and steel beam to Engineer's design. Note: Option not available with option Internal02

EX04 - External Option 04

Provide Grand Alfresco option, including: 1No. additional timber post, additional structural concrete slab, additional tiled roof over. Option adds 15.67m² to the total floor area.

IN01 - Internal Option 01

Provide Walk-in Linen in lieu of Study Nook, including: additional stud and plaster wall, 820mm hinged door, 3No. 450mm shelving. Note: Option not available with options Internal05, External01, External02

IN02 - Internal Option 02

Provide 1000mm wide bulkhead opening between Meals and Activity as shown. Note: Option not available with option External03.

IN03 - Internal Option 03

Provide 5th Bedroom option in lieu of Living room, including: built-in Robe with 450mm shelf and hanging rail with full-width sliding doors, 870mm hinged door in lieu of bulkhead opening. Note: Option not available with options Internal04, External02

IN04 - Internal Option 04

Provide floor plan option which moves Bed 1 to the rear of the home as shown. Note: Option not available with options Ensuite01, Ensuite02, Internal03, External01, External02, External03

IN05 - Internal Option 05

Provide built-in joinery option to Study Nook, including: 600mm deep 32mm thick laminate benchtop, 1No. 450mm drawer unit under desk, 2No. 300mm deep 60mm thick open shelves over. Provide bulkhead over as shown. Note: Option not available with options Internal01, External01, External02

IN06 - Internal Option 06

Provide built-in joinery option to Activity, including: 600mm deep 32mm thick laminate benchtop, 2No. 800mm tv unit cupboards, 1No. 700mm tv unit cupboard, 2No. 300mm deep 60mm thick open shelves over. Provide bulkhead over. Note: Option not available with option External03.