

# RIVERTON 25

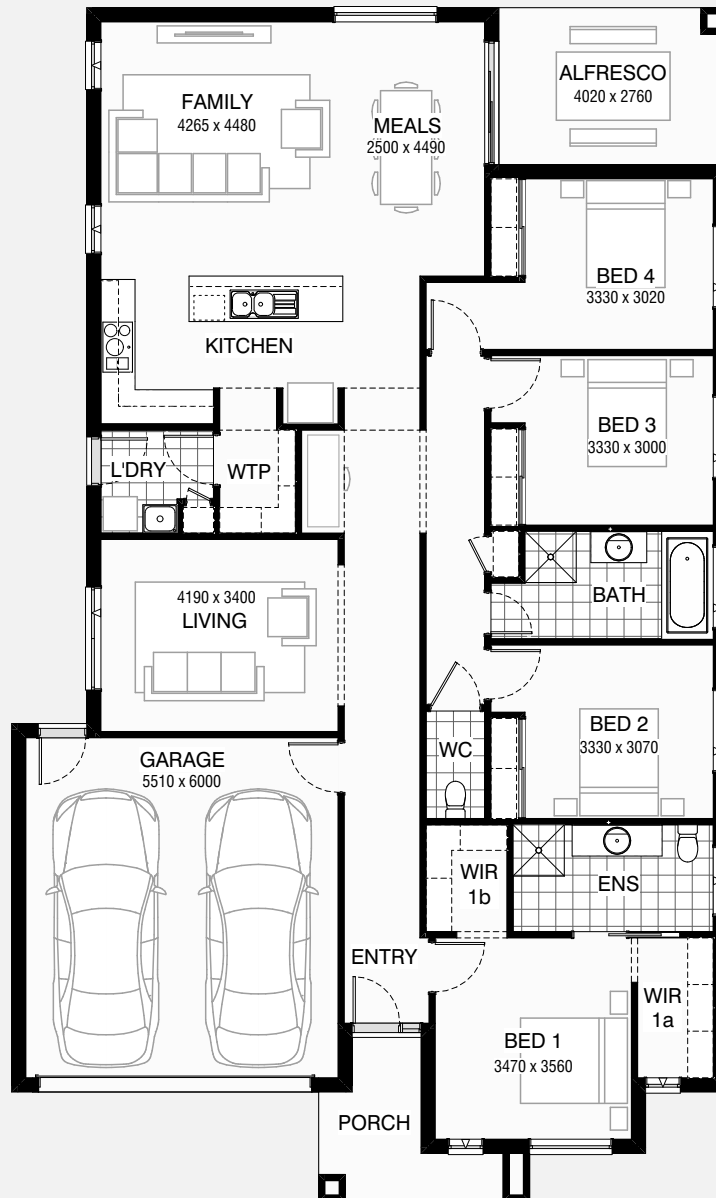
4 2 2

Total squares 25.1sq

**B**  
SERIES

Minimum  
Lot Width  
**14.0m**

Minimum  
Lot Length  
**28.0m**



**Design Dimensions**  
12,590mm(W) x 20,990mm(L).

**Facade Choices**  
Brentwood, Glendale, Inglewood,  
Malibu, Northridge, Pasadena, Santa Monica.  
Details based on Inglewood façade floorplan (illustrated)

## DESIGN DIMENSIONS

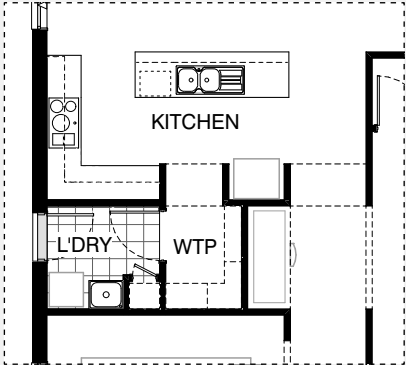
Residence	179.1m <sup>2</sup>	19.3sq
Garage	36.4m <sup>2</sup>	3.9sq
Porch	6.2m <sup>2</sup>	0.7sq
Alfresco	11.1m <sup>2</sup>	1.2sq
<b>Total</b>	<b>232.8m<sup>2</sup></b>	<b>25.1sq</b>

**Burbank**

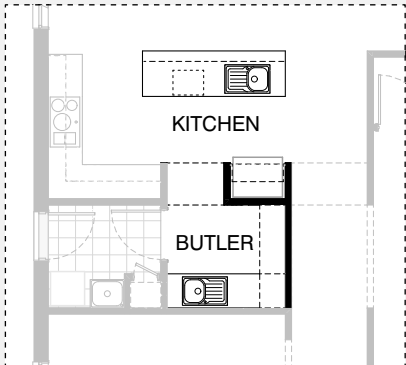
\*Copyright conditions. All photos and illustrations are representative only. Floor plans and specifications may be varied by Burbank without notice, the dimensions are diagrammatic only and a Building Contract with final drawings will display correct dimensions and detail. All designs are the property of Burbank and must not be used, reproduced, copied or varied, wholly or in part without written permission from an authorised Burbank representative. Copyright Burbank Australia Pty Ltd. ABN 91 007 099 872. Builders Registration Number CDB-U-52603.



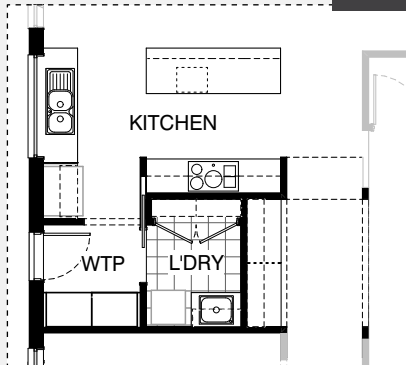
KITCHEN OPTIONS



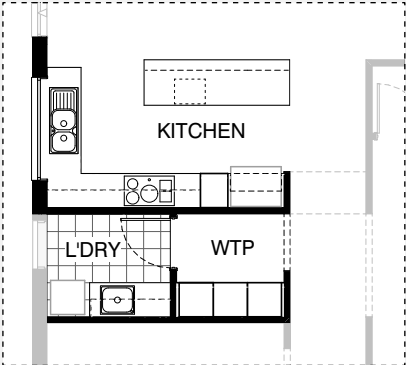
Master Kitchen Design



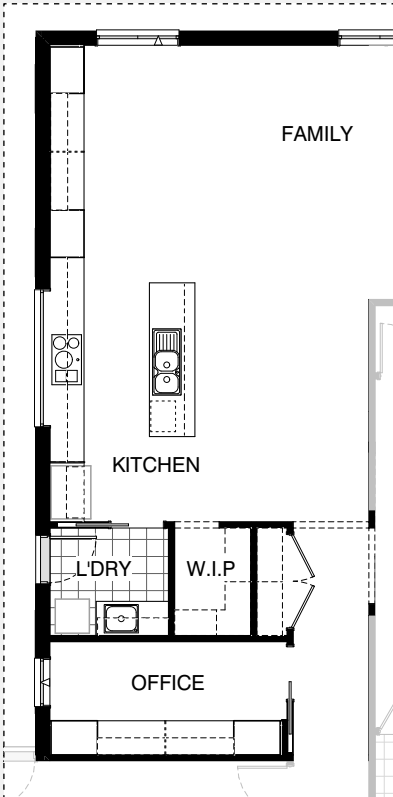
K1



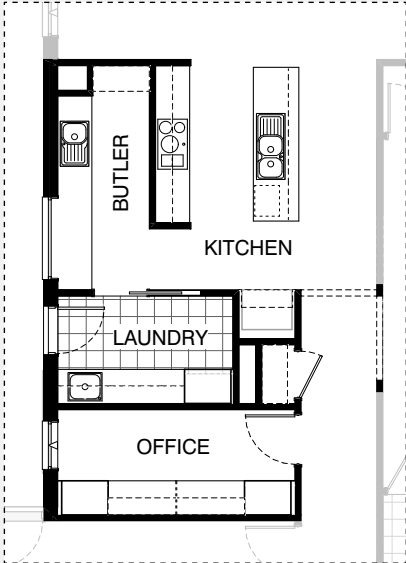
K2



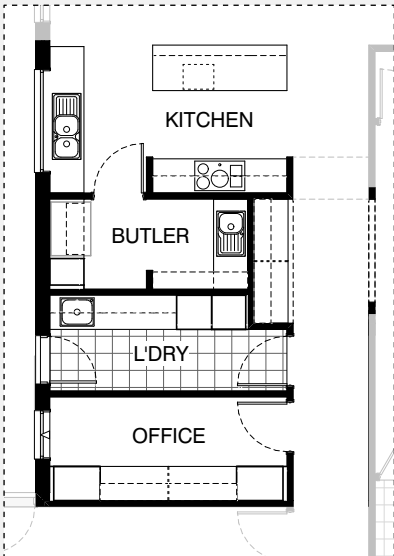
K3



K6



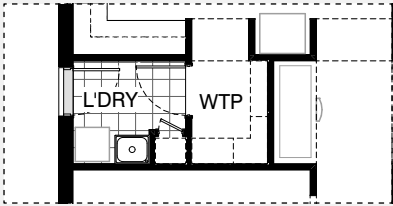
K4



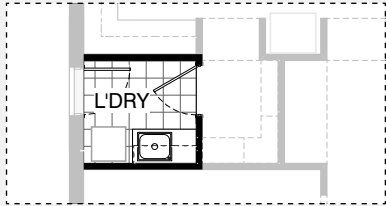
K5



LAUNDRY OPTIONS

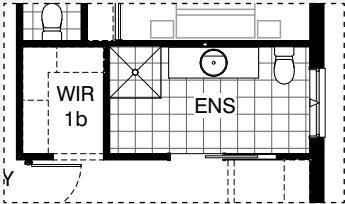


Master Laundry Design

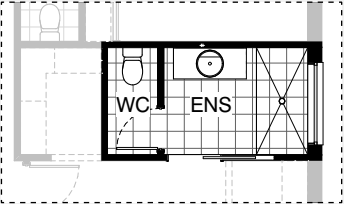


LD1

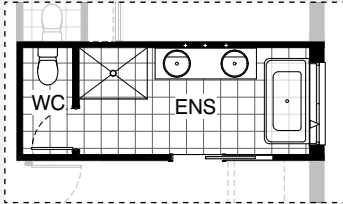
ENSUITE OPTIONS



Master Ensuite Design

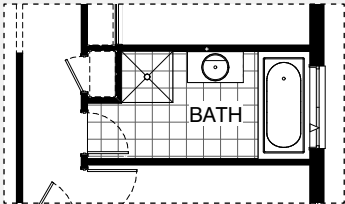


EN1

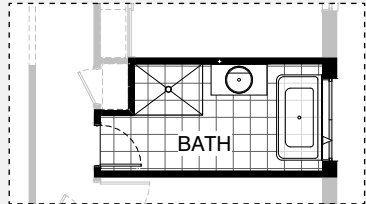


EN2

BATHROOM OPTIONS

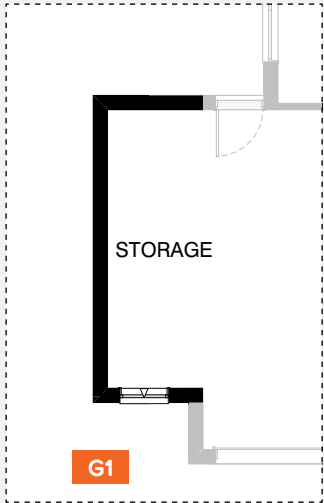


Master Bathroom Design

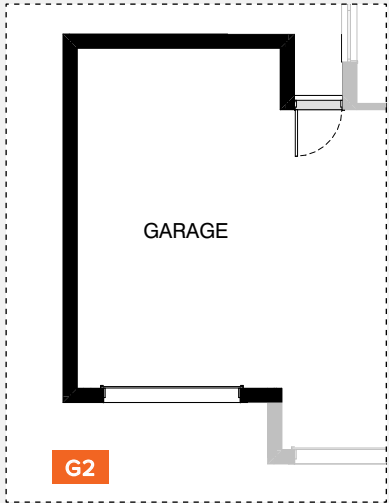


IN1

GARAGE OPTIONS

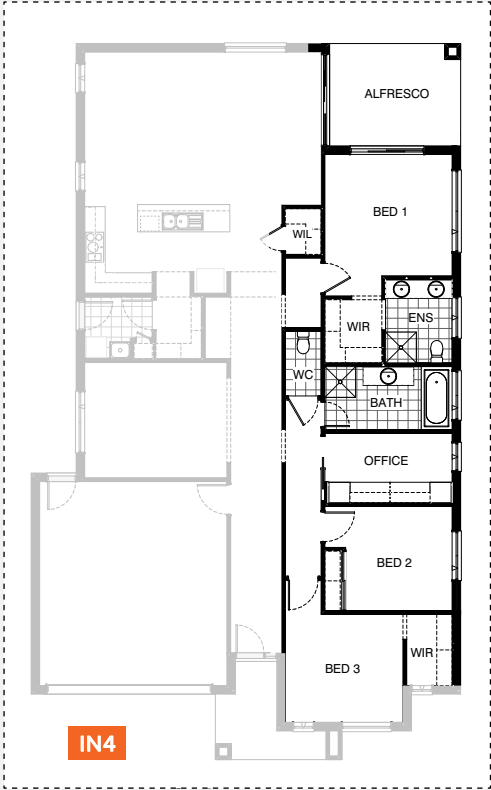
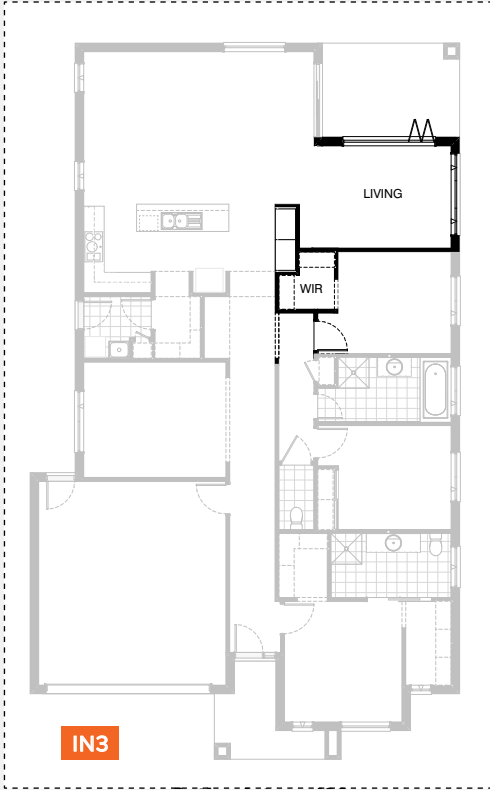
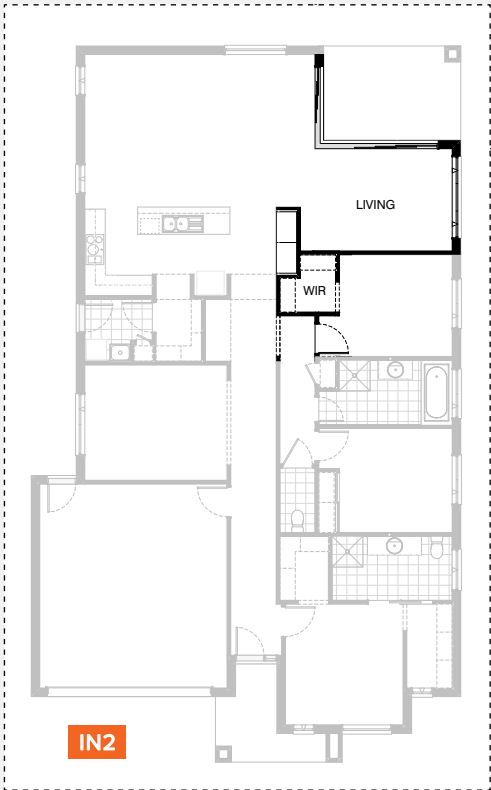
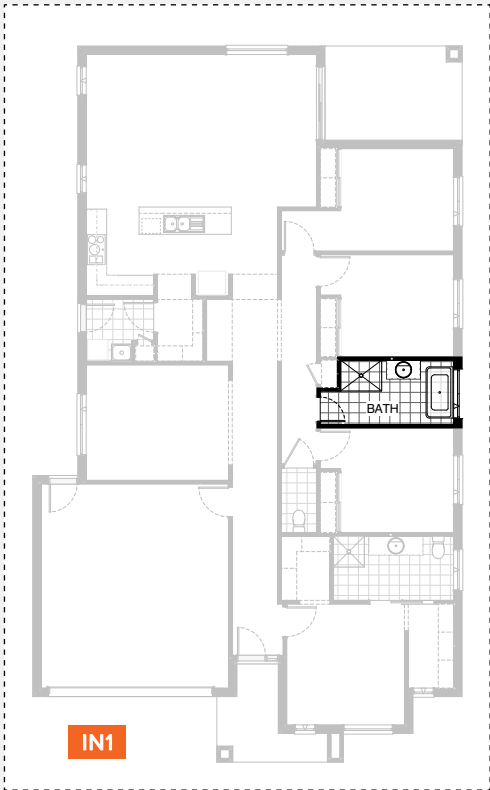


G1

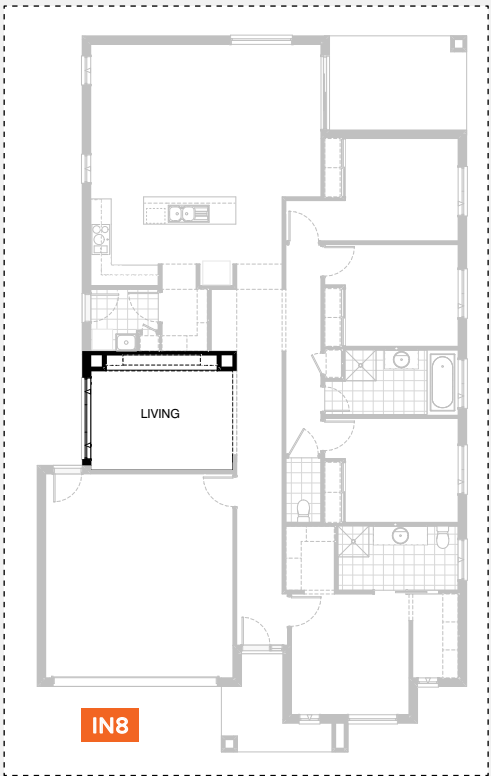
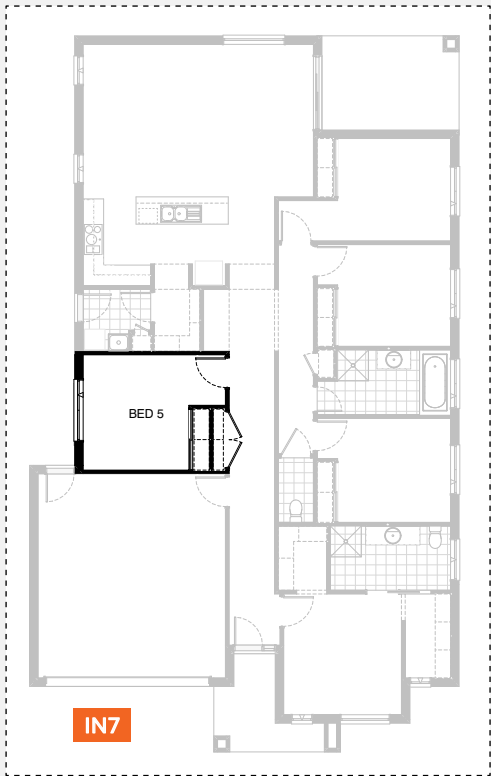
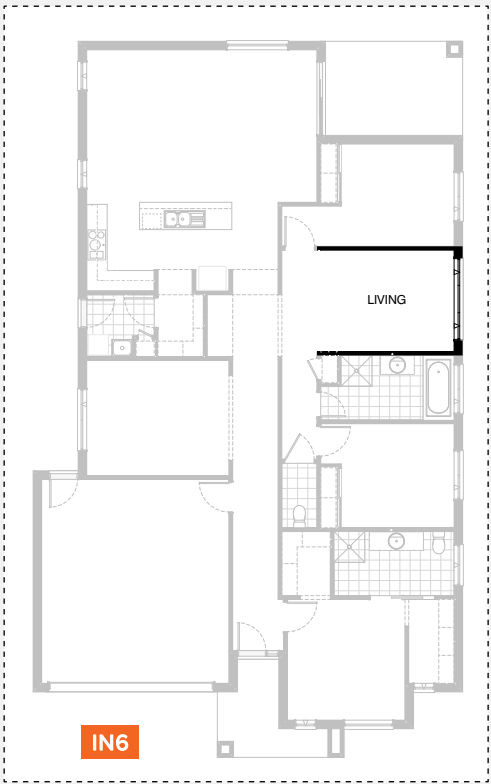
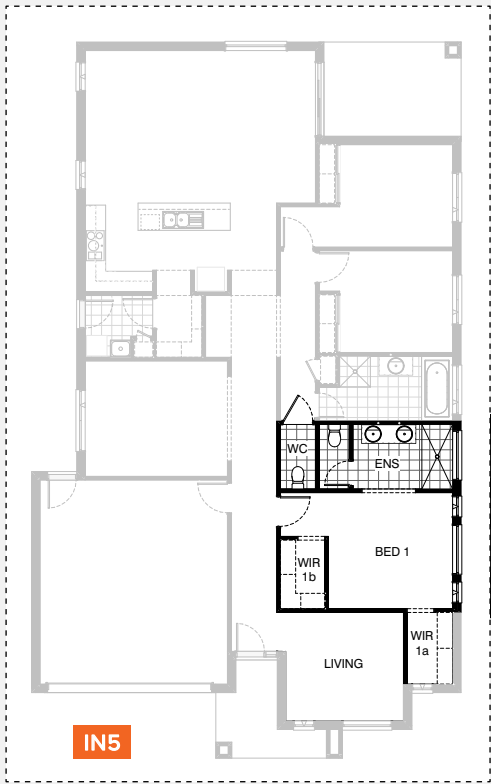


G2

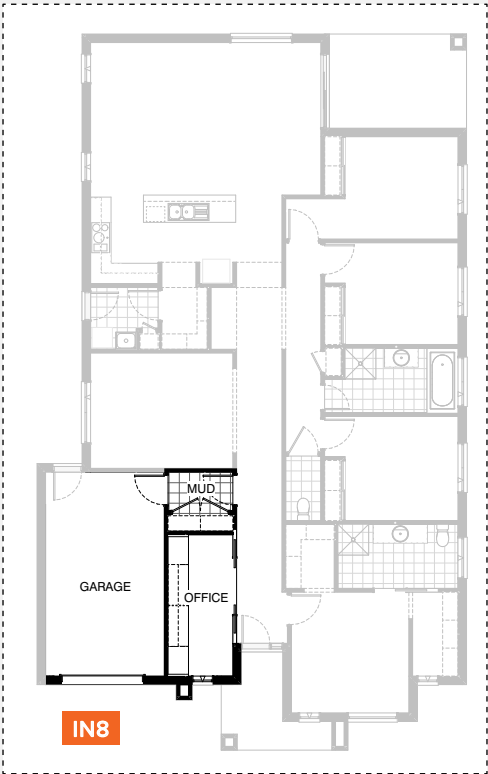
INTERNAL OPTIONS



INTERNAL OPTIONS



INTERNAL OPTIONS



# RIVERTON 25

## OPTION DESCRIPTIONS

### Kitchen Option 01

Provide Butler's Pantry in lieu of Walk-in Pantry and Study Nook, including:

20mm stone benchtop,  
single bowl sink,  
1No. 900mm base cupboard,  
1No. dishwasher provision,  
1No. open shelf over relocated Ref. space,  
1No. 450mm adjustable shelf unit.

Island includes:

1No. 900mm base cupboard,  
1No. 450mm base cupboard,  
1No. 450mm drawer unit,  
1No. microwave provision with pot drawer,  
single bowl sink.

Note: Kitchen cabinetry to cooker to remain unchanged.

### Kitchen Option 02

Provide 3-way Kitchen upgrade option with rearranged Walk-in Pantry and Laundry.

Kitchen includes:

1No. 900mm retractable rangehood,  
1No. 900mm under bench oven and cooktop,  
1No. 450mm drawer unit,  
1No. dishwasher provision,  
1No. microwave provision with pot drawer,  
1No. 900mm base cupboard,  
2No. 700mm base cupboards,  
2No. 600mm base cupboards,  
1No. 450mm base cupboard,  
2No. 700mm overhead cupboards,  
1No. open shelf over Ref. space,  
1No. 1200mm x 1810mm aluminium fixed window with no bottom reveal over sink.

Laundry includes:

1No. 920mm cavity sliding door, inset trough and  
1No. 800mm base cupboard,  
1No. 800mm overhead cupboard,  
32mm laminate benchtop and tiled splashback to suit.

Provide 1No. built-in Linen cupboard with  
2No. 720mm hinged doors and 4No. 300mm  
shelves. Walk-in Pantry includes:

2No. 800mm laminated pantry units with  
5No. 450mm shelves,  
Study Nook joinery includes:  
1No. 600mm deep 32mm thick laminate desk,  
1No. 450mm wide drawer unit beneath desk,  
2No. 60mm thick 300mm deep open shelves over desk.  
Provide 1No. built-in Coats cupboard with 820mm  
hinged door and 1No. 450mm shelf and hanging rail.

Note: option takes 300mm from Living to accommodate.

### Kitchen Option 03

Provide Kitchen upgrade option with L-shaped benchtop with relocated sink and cooker and removed Study Nook.

Kitchen includes:

1No. 900mm retractable rangehood,  
1No. 900mm under bench oven and cooktop,  
1No. 450mm drawer unit,  
1No. dishwasher provision,  
1No. microwave provision with pot drawer,  
1No. 900mm base cupboard,  
1No. 900mm corner base cupboard,  
2No. 700mm base cupboards,  
2No. 450mm base cupboards,  
1No. 900mm overhead cupboard,  
1No. 450mm overhead cupboard,  
1No. 400mm overhead open shelf unit,  
1No. 450mm laminated pantry unit with  
5No. 450mm shelves,

1No. open shelf over Ref. space,

1No. 1200mm x 1810mm aluminium fixed window with no bottom reveal over sink.

Walk-through Pantry includes:

3No. 600mm laminated pantry units with  
5No. 450mm shelves.

Laundry includes:

1No. 870mm hinged door, inset trough and  
1No. 900mm base cupboard,  
1No. 450mm base cupboard,  
1No. 900mm overhead cupboard,  
1No. 450mm overhead cupboard,  
32mm laminate benchtop and tiled splashback to suit.

### Kitchen Option 04

Provide Kitchen upgrade option with rearranged layout and Butler's Pantry with upgraded Laundry and Office in lieu of Living.

Kitchen includes:

1No. 900mm retractable rangehood,  
1No. 900mm under bench oven and cooktop,  
1No. 450mm drawer unit,  
1No. dishwasher provision,  
1No. microwave provision with pot drawer,  
3No. 900mm base cupboards,  
2No. 900mm overhead cupboards,  
1No. open shelf over Ref. space.

Butler's Pantry includes:

20mm stone benchtop,  
single bowl sink,  
1No. 900mm base cupboard,  
3No. 800mm base cupboards,  
4No. 450mm shelves,  
1No. 1200mm x 1450mm aluminium fixed window with no bottom reveal.

Laundry includes:

1No. 920mm cavity sliding door, inset trough and  
1No. 900mm base cupboard,  
2No. 900mm overhead cupboards,  
1No. 400mm overhead cupboard,  
1No. 800mm laminated linen unit with  
5No. 450mm shelves,  
32mm laminate benchtop and tiled splashback to suit.

Bench height raises to 950mm from FFL with open space under the benchtop to accommodate washer and dryer side-by-side.

Office joinery includes:

1No. 870mm hinged door,  
1No. 600mm deep 32mm thick laminate desk,  
2No. 800mm laminated cupboards with 5No. 450mm shelves,  
2No. 300mm deep 60mm thick open shelves over desk,  
1No. 1800mm x 850mm aluminium awning window.  
Provide 1No. built-in Coats cupboard with  
820mm hinged door, 1No. 450mm shelf and hanging rail.

### Kitchen Option 05

Provide 3-way Kitchen upgrade option with rearranged layout and Butler's Pantry with upgraded Laundry and Office in lieu of Living.

Kitchen includes:

1No. 900mm retractable rangehood,  
1No. 900mm under bench oven and cooktop,  
1No. 450mm drawer unit,  
1No. dishwasher provision,  
1No. microwave provision with pot drawer,  
1No. 900mm base cupboard,  
2No. 700mm base cupboards,  
2No. 600mm base cupboards,  
2No. 450mm base cupboards,  
2No. 700mm overhead cupboards,  
1No. 1200mm x 1810 aluminium fixed window with



# RIVERTON 25

## OPTION DESCRIPTIONS

no bottom reveal over sink.

Butler's Pantry includes:

20mm stone benchtop,

single bowl sink,

1No. 870mm hinged door,

1No. 800mm base cupboard,

1No. 400mm base cupboard,

1No. 450mm laminated pantry unit with

5No. 450mm shelves,

1No. 300mm adjustable shelf unit,

1No. 900mm laminated open shelf over Ref. space.

Laundry includes:

1No. 870mm hinged door, inset trough and

1No. 900mm base cupboard,

2No. 900mm overhead cupboards,

1No. 400mm overhead cupboard,

2No. 600mm laminated linen units with

5No. 450mm shelves,

32mm laminate benchtop and tiled splashback to suit.

Bench height raises to 950mm from FFL with

open space under the benchtop to accommodate

washer and dryer side-by-side.

Office joinery includes:

1No. 870mm hinged door,

1No. 600mm deep 32mm thick laminate desk,

2No. 800mm laminated cupboards with

5No. 450mm shelves,

2No. 300mm deep 60mm thick open shelves over desk,

1No. 1800mm x 850mm aluminium awning window.

Study Nook joinery includes:

1No. 600mm deep 32mm thick laminate desk,

1No. 450mm wide drawer unit beneath desk,

2No. 60mm thick 300mm deep open shelves over desk.

### Kitchen Option 06

Provide alternate Kitchen option with

Study Nook in lieu of Office.

Kitchen includes:

1No. 900mm retractable rangehood,

1No. 900mm under bench oven and cooktop,

1No. 450mm drawer unit,

1No. dishwasher provision,

1No. microwave provision with pot drawer,

3No. 900mm base cupboards,

2No. 450mm base cupboards,

2No. 900mm overhead cupboards,

2No. 450mm overhead cupboards,

1No. open shelf over Ref. space,

1No. 514mm x 2410mm aluminium fixed window with

no bottom reveal over cooker.

Walk-in Pantry includes:

4No. 450mm shelves,

Laundry includes:

1No. 920mm cavity sliding door, inset trough and

1No. 800mm base cupboard,

1No. 400mm base cupboard,

1No. 800mm overhead cupboard,

1No. 400mm overhead cupboard,

32mm laminate benchtop and tiled splashback to suit.

Provide plaster-lined Linen cupboard to passage with

2No. 820mm hinged doors and 4No. 450mm shelves.

Office joinery includes:

1No. 920mm cavity sliding door,

1No. 600mm deep 32mm thick laminate desk,

2No. 800mm laminated cupboards with 5No. 450mm shelves,

2No. 300mm deep 60mm thick open shelves over desk,

1No. 1800mm x 850mm aluminium awning window.

Study Nook joinery includes:

1No. 600mm deep 32mm thick laminate desk,

2No. 800mm laminated cupboards with 5No. 450mm shelves,

2No. 300mm deep 60mm thick open shelves over desk.

2No. 2057mm x 1210mm aluminium awning windows to Family in lieu of standard.

### Laundry Option 01

Provide Laundry upgrade with laminate base and overhead cupboards and inset trough, including:

1No. 700mm base cupboard,

1No. 350mm base cupboard,

1No. 700mm overhead cupboard,

1No. 350mm overhead cupboard,

32mm laminate benchtop and tiled splashback to suit.

### Ensuite Option 01

Provide Ensuite upgrade option including:

1No. 1282mm vanity with single basin,

1880mm x 900mm wall-to-wall tiled shower base,

1No. 350mm x 1450mm aluminium fixed window

over shower in lieu of standard,

Enclosed WC with 720mm hinged door.

### Ensuite Option 02

Provide Ensuite upgrade option including:

1No. 1782mm vanity with double basins,

1200mm x 900mm tiled shower base,

1No. 1500mm freestanding bath,

1No. 1200mm x 1450mm awning window over

bath in lieu of standard,

Enclosed WC with 720mm hinged door.

Note: option removes WIR 1B

### Internal Option 01

Provide Bathroom upgrade option, including:

1No. 1500mm free-standing bath,

900mm x 1200mm tiled shower base.

### Internal Option 02

Provide additional Living area option in lieu of Bed 4, including:

Removing built-in Robe and hinged door,

1No. 2107mm - 3610mm x 2410mm aluminium corner sliding

door in lieu of standard,

1No. 1200mm x 2410 aluminium awning window

in lieu of standard,

Provide additional joinery facing Kitchen, including:

2No. 600mm laminated pantry units with

5No. 450mm shelves.

Relocate hinged door to Bed 3 and provide Walk-in Robe 3

in lieu of standard built-in Robe.

### Internal Option 03

Provide additional Living area option in lieu of Bed 4, including:

Removing built-in Robe and hinged door,

1No. 1200mm x 2710mm aluminium bi-fold window

in lieu of standard,

1No. 1200mm x 2410mm aluminium awning window

in lieu of standard,

Provide additional joinery facing Kitchen, including:

2No. 600mm laminated pantry units with

5No. 450mm shelves.

Relocate hinged door to Bed 3 and provide Walk-in Robe 3

in lieu of standard built-in Robe.

### Internal Option 04

Provide Bed 1 option which moves it to the rear of the home, including:

1No. 2095mm x 2170mm aluminium sliding door to Bed 1,

1No. 514mm x 2410mm aluminium awning window

in lieu of standard.

Ensuite has 1No. 1782mm vanity with double basins including

1 row tiling beneath mirror to suit wall to wall benchtop in lieu of standard.

Bath now has 1482mm vanity with single basin.

Provide Office in lieu of Bed 4, with built-in joinery, including:

1No. 920mm cavity sliding door,





# RIVERTON 25

## OPTION DESCRIPTIONS

1No. 600mm deep 32mm thick laminate desk,  
2No. 600mm laminated cupboards with 5No. 450mm shelves,  
2No. 300mm deep 60mm thick open shelves over desk,  
1No. 1800mm x 850mm aluminium awning window.  
Provide Walk-in Linen near Kitchen with  
720mm hinged door and 4No. 450mm shelves.

### Internal Option 05

Provide Bed 1/Living option which provides additional Living to front of the home with Bed 1 behind in lieu of Bed 2, including:  
1No. 514mm x 1450mm aluminium fixed window and  
2No. 1200mm x 610mm aluminium awning windows to Bed 1 in lieu of standard.  
Ensuite has 1582mm vanity with double basins,  
1890mm x 900mm wall-to-wall tiled shower base with  
1No. 350mm x 1450mm aluminium fixed window over,  
Enclosed WC with 720mm hinged door.

### Internal Option 06

Provide additional Living area option in lieu of Bed 3, including:  
Removing built-in Robe and hinged door,  
1No. 1200mm x 2410mm aluminium awning window  
in lieu of standard.

### Internal Option 07

Provide additional bedroom option in lieu of Living, including:  
1No. 870mm hinged door,  
Built-in Robe with sliding doors and  
450mm shelf with hanging rail,  
1No. 1200mm x 1810mm aluminium awning window  
in lieu of standard.  
Provide built-in Linen to Passage with  
2No. 820mm hinged doors and 4No. 450mm shelves.

### Internal Option 08

Provide built-in joinery option to Living, including:  
450mm deep 32mm thick benchtop,  
4No. 800mm tv units,  
2No. 450mm opn shelf units,  
2No. 300mm deep 60mm thick open shelves over.  
Provide 2No. voids to accommodate.

### Internal Option 09

Provide Home Office/Mud room option with Single car Garage in lieu of Double Garage, including:  
Tiled Mud room with 870mm hinged door,  
1No. built-in Linen cupboard with 2No. 820mm hinged doors and  
4No. 450mm shelves  
Home Office built-in joinery includes:  
1No. 600mm deep 32mm thick laminate desk,  
2No. 800mm laminated cupboards,  
2No. 300mm deep 60mm thick open shelves over desk,  
2No. 820mm bi-parting cavity sliding doors,  
1No. 2057mm x 610mm aluminium awning feature window.  
Provide 1No. 2410mm wide Garage door to new single Garage in lieu of standard with 450mm x 470mm engaged pier to project under eaves.

### Garage Option 01

Provide extension to Garage to create additional Storage area including additional 2057mm x 850mm aluminium awning feature window.  
Increases width of the home by 1680mm.  
Increases area of the home by 9.07m<sup>2</sup>

### Garage Option 02

Provide extension to Garage to create Triple Car Garage including additional 2290mm x 2410mm garage door as per colour selection.  
Increases width of the home by 3600mm.  
Increases area of the home by 23.85m<sup>2</sup>

