

FLOORPLAN OPTIONS

We personalise our floorplans. Talk to us about our huge range of ready-to-go design options.

Listed details based on Traditional facade floorplan (illustrated)

Facades available:

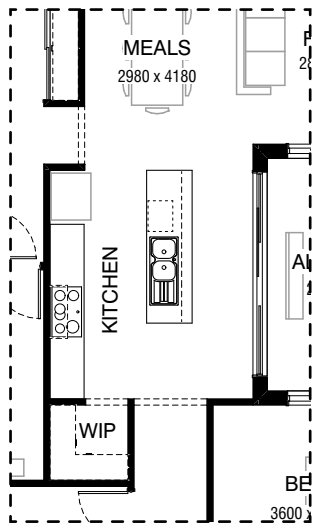
Coastal, Delta, Kingston, Nouveau
Salisbury, Traditional, York

Overall home width 11,260mm

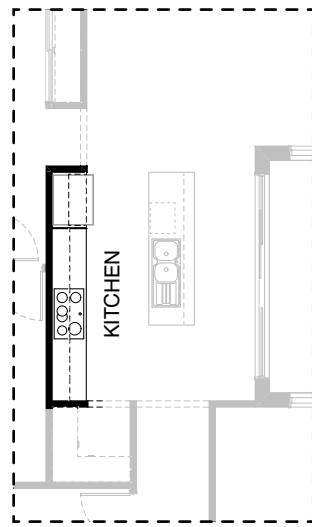
Overall home length 20,990mm

Residence	159.5m ²	17.2sq
Garage	37.4m ²	4.0sq
Porch	3.2m ²	0.3sq
Alfresco	11.8m ²	1.3sq
Total	211.9m²	22.8sq

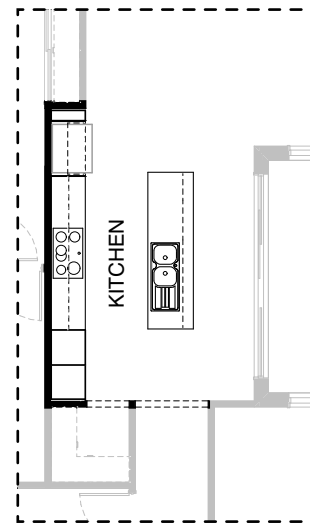
*Copyright conditions. All photos and illustrations are representative only. Floor plans and specifications may be varied by Burbank without notice, the dimensions are diagrammatic only and a Building Contract with final drawings will display correct dimensions and detail. All designs are the property of Burbank and must not be used, reproduced, copied or varied, wholly or in part without written permission from an authorised Burbank representative. Copyright Burbank Australia (QLD) Pty Ltd. ABN 77 103 014 615. QBCC 1046544.



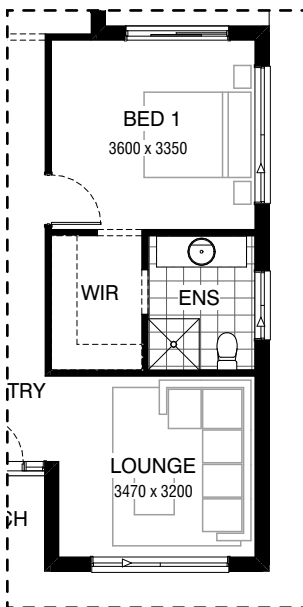
Master Kitchen



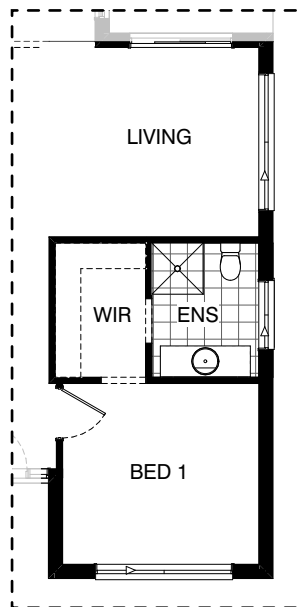
K01



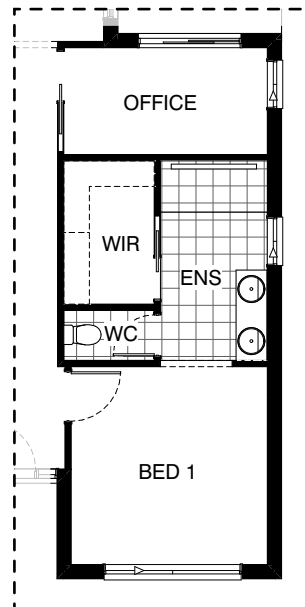
K02



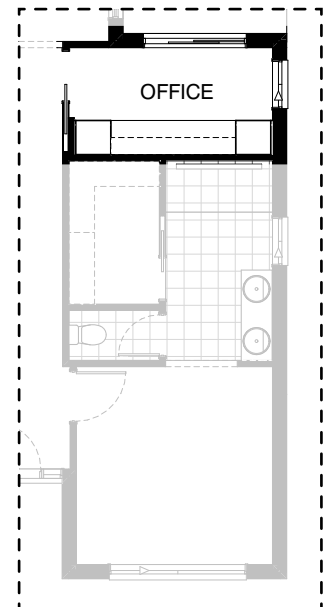
Master Bedroom 1



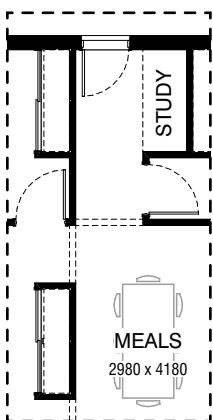
IN01



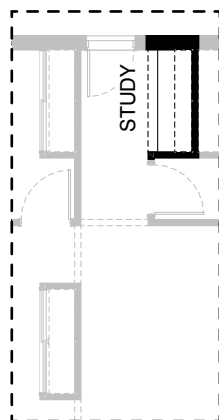
IN02



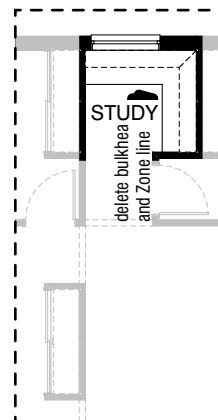
IN03



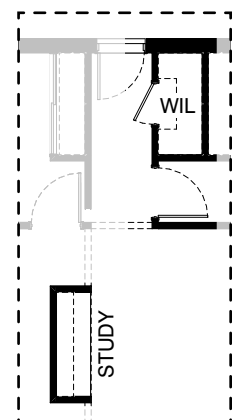
Master Study



IN04

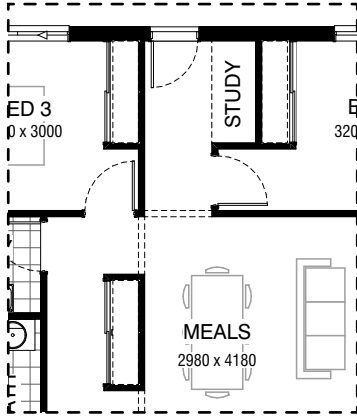


IN05

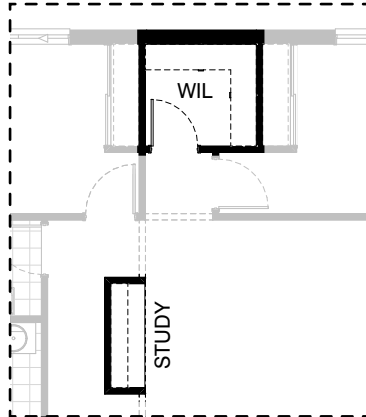


IN06

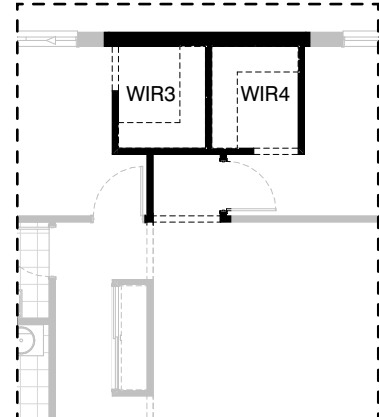
*Copyright conditions. All photos and illustrations are representative only. Floor plans and specifications may be varied by Burbank without notice, the dimensions are diagrammatic only and a Building Contract with final drawings will display correct dimensions and detail. All designs are the property of Burbank and must not be used, reproduced, copied or varied, wholly or in part without written permission from an authorised Burbank representative. Copyright Burbank Australia (QLD) Pty Ltd. ABN 77 103 014 615. QBCC 1046544.



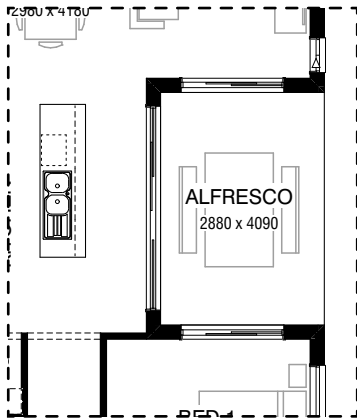
Master Study



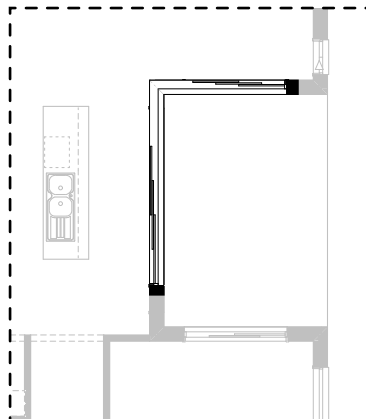
IN07



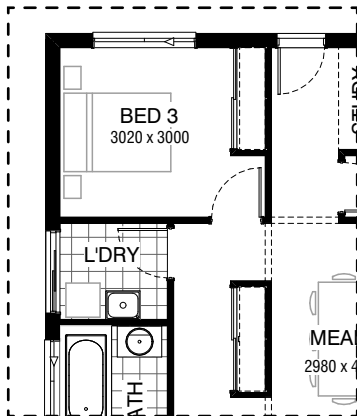
IN08



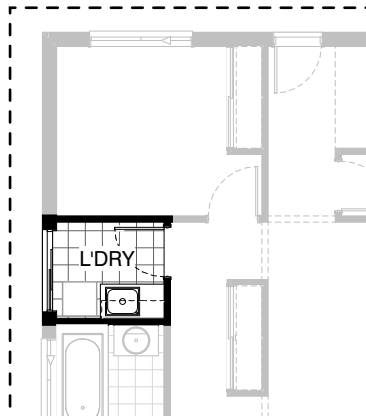
Master Alfresco



EX01



Master Laundry



LD01

OPTION DESCRIPTIONS**K01 - Kitchen Option 1**

Provide Kitchen upgrade option, including:
open shelf over Ref space,
2No. 700mm overhead cupboards,
2No. 350mm overhead cupboards.

K02 - Kitchen Option 2

Provide Kitchen upgrade option, including:
open shelf over relocated Ref space,
900mm retractable rangehood,
dishwasher provision,
1No. 450mm drawer unit,
4No. 900mm base cupboards,
1No 700mm base cupboard,
2No. 900mm overhead cupboards,
2No. 600mm oven towers with
microwave provisions & pot drawers,
1No. 180mm full height wine rack.
Remove bulkhead opening to Passage.

IN01 - Internal Option 1

Provide floor plan option which swaps the locations of Bed 1 and Living,
moving Bed 1 to the front of the home and Living adjacent to the Alfresco.
Provide 1027mm x 2410mm Aluminium sliding window to new Living in lieu
of standard.

IN02 - Internal Option 2

Provide floor plan option which moves Bed 1 to the front of the home with
upgraded Ensuite, and provides Home Office adjacent to the Alfresco.
New Ensuite includes:
1880x900mm tiled shower base with grate drain,
1582mm vanity with 1590mm bench top butting into side wall and double
basins,
enclosed WC with 720mm hinged door,
larger Walk-in Robe with 720mm cavity sliding door,
ASW1009 sliding window in lieu of standard.
Provide ASW2009 sliding window to new Office in lieu of standard.

IN03 - Internal Option 3

Provide built-in joinery option to Home Office, including:
600mm deep 32mm thick laminate bench top,
2No. 600mm full height laminate cupboards,
2No. 300mm deep 60mm thick laminate open shelves.
Note: Option only available with Option Internal02.

IN04 - Internal Option 4

Provide built-in joinery option to Study Nook, including:
600mm deep 32mm thick laminate bench top,
2No. 300mm deep 60mm thick laminate open shelves.
Note: Option not available with Options Internal05, Internal06, Internal07,
Internal08.

IN05 - Internal Option 5

Provide built-in joinery option to Study Nook, including:
L-shaped 600mm deep 32mm thick laminate bench top,
2No. L-shaped 300mm deep 60mm thick laminate open shelves.
Remove 2105mm x 850mm Aluminium entry door and bulkhead over Study
Nook.
Provide 514mm x 1210mm Aluminum fixed window above bench top.
Note: Option not available with Options Internal04, Internal06, Internal07,
Internal08.

IN06 - Internal Option 6

Provide Walk-in Linen with 4No. 450mm shelves and 720mm hinged door.
Relocate Study Nook to location of Linen cupboard near Meals and provide
built-in joinery, including:
600mm deep 32mm thick laminate bench top,
2No. 300mm deep 60mm thick laminate open shelves.
Provide bulkhead over Study Nook.
Note: Option not available with Options Internal04, Internal05, Internal07,
Internal08.

IN07 - Internal Option 7

Provide Walk-in Linen with 4No. 450mm shelves and 820mm hinged door,
relocate Study Nook to location of Linen cupboard near Meals and provide
built-in joinery, including:
600mm deep 32mm thick laminate bench top,
2No. 300mm deep 60mm thick laminate open shelves.
Provide bulkhead over Study Nook.
Remove 2105mm x 850mm Aluminum entry door.
Note: Option not available with Options Internal04, Internal05, Internal06,
Internal08.

IN08 - Internal Option 8

Provide Walk-in Robes to Beds 2 and 3 in lieu of built-in Robes with sliding
doors. Remove 2105mm x 850mm Aluminum entry door.
Note: Option not available with Options Internal04, Internal05, Internal06,
Internal07.

EX01 - External Option 1

Provide corner sliding door option. Remove 2110mm x 3590mm and ASD
2110mm x 1810 sliding doors and replace with 2107mm x 3610mm - 2410mm
Aluminium corner sliding door. Provide 2No. steel posts and steel beam to
Engineer's design.

LD01 - Laundry Option 1

Provide Laundry upgrade option, including:
32mm laminate bench top,
1No. 700mm base cupboard,
1No. 350mm base cupboard,
1No. 700mm overhead cupboard,
1No. 350mm overhead cupboard,
tiled splashback as required.