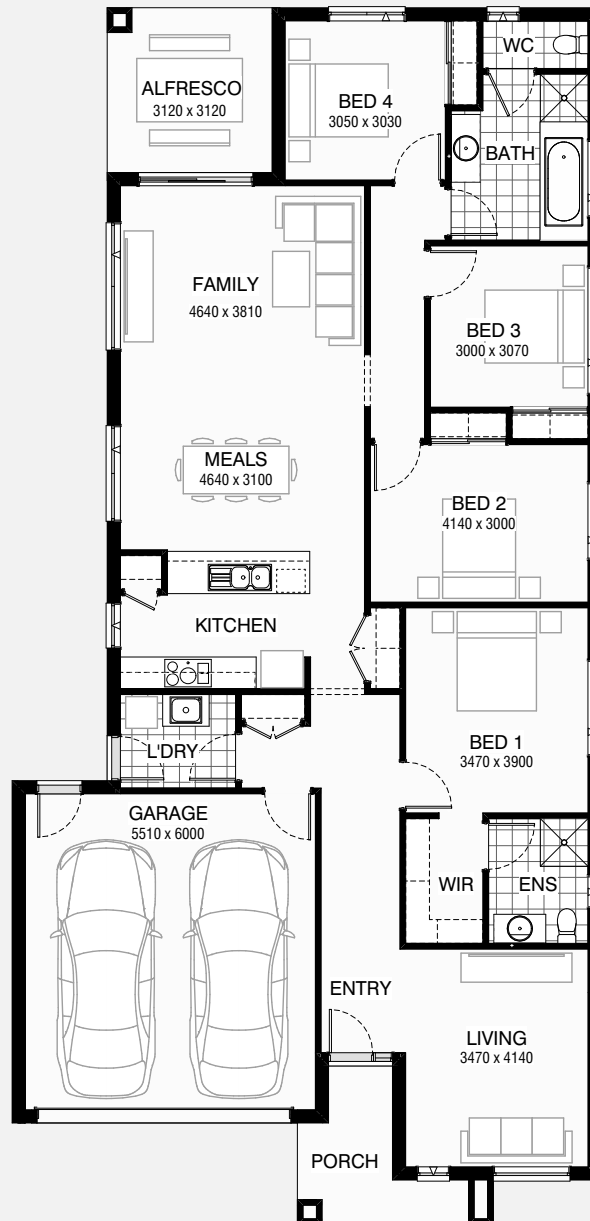


# COVELLO 24

🏠 4 🚿 2 🚗 2

Total squares 23.5sq



**B**  
SERIES

Minimum  
Lot Width  
**12.5m**

Minimum  
Lot Length  
**30.0m**

**Design Dimensions**  
11150mm(W) x 23030mm(L),

**Facade Choices**  
Brentwood, Glendale, Inglewood,  
Malibu, Northridge, Pasadena, Santa Monica.  
Details based on Inglewood façade floorplan (illustrated)

## DESIGN DIMENSIONS

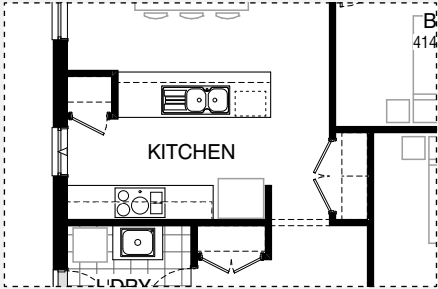
Residence	165.7m <sup>2</sup>	17.8sq
Garage	36.6m <sup>2</sup>	3.9sq
Porch	6.4m <sup>2</sup>	0.7sq
Alfresco	9.7m <sup>2</sup>	1.0sq
<b>Total</b>	<b>218.4m<sup>2</sup></b>	<b>23.5sq</b>

**Burbank**

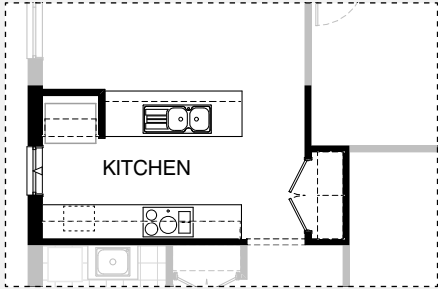
\*Copyright conditions. All photos and illustrations are representative only. Floor plans and specifications may be varied by Burbank without notice, the dimensions are diagrammatic only and a Building Contract with final drawings will display correct dimensions and detail. All designs are the property of Burbank and must not be used, reproduced, copied or varied, wholly or in part without written permission from an authorised Burbank representative. Copyright Burbank Australia Pty Ltd. ABN 91 007 099 872. Builders Registration Number CDB-U-52603.



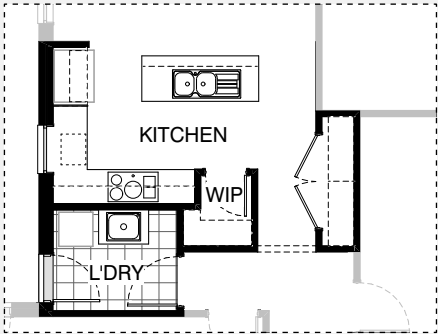
KITCHEN OPTIONS



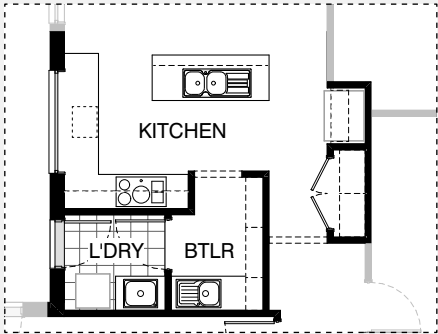
Master Kitchen Design



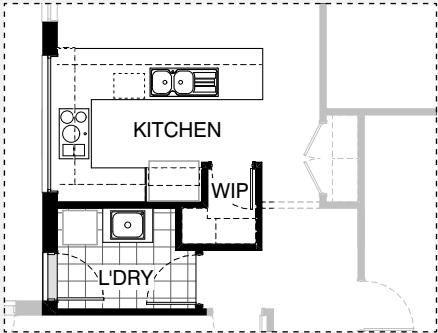
K1



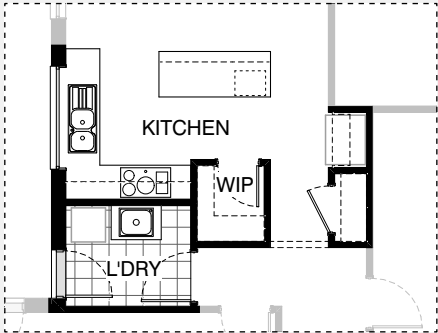
K2



K3

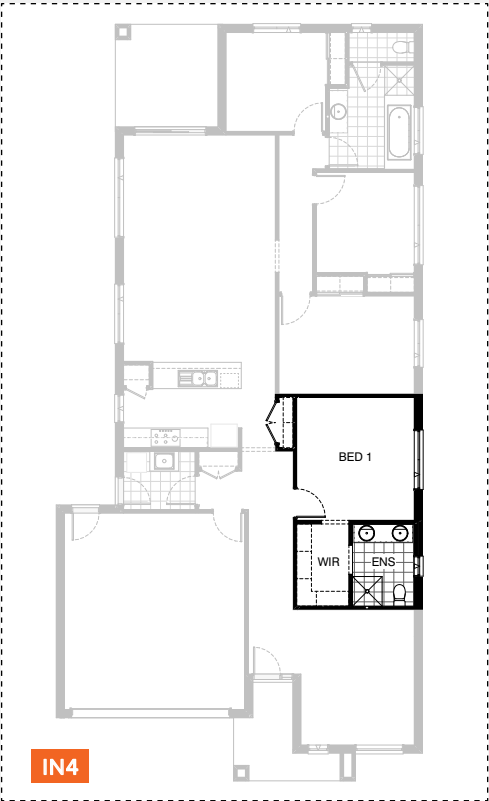
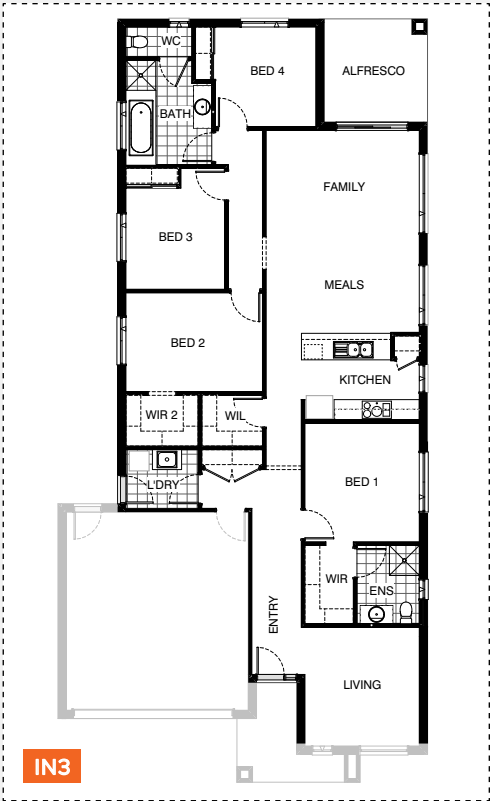
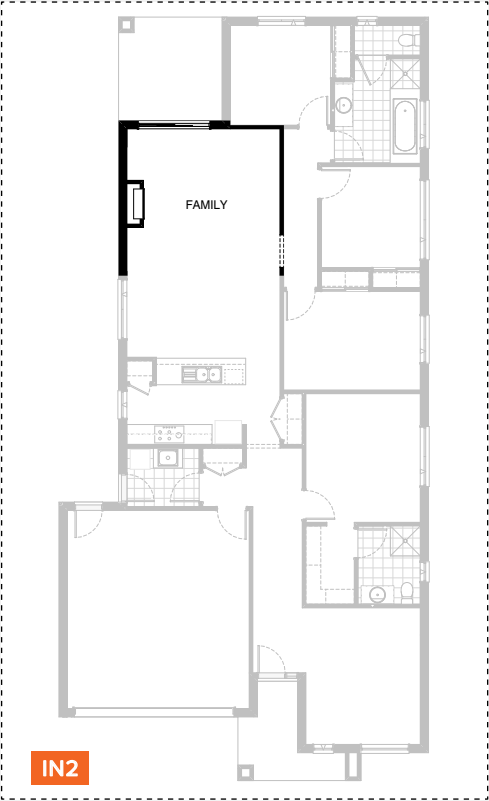
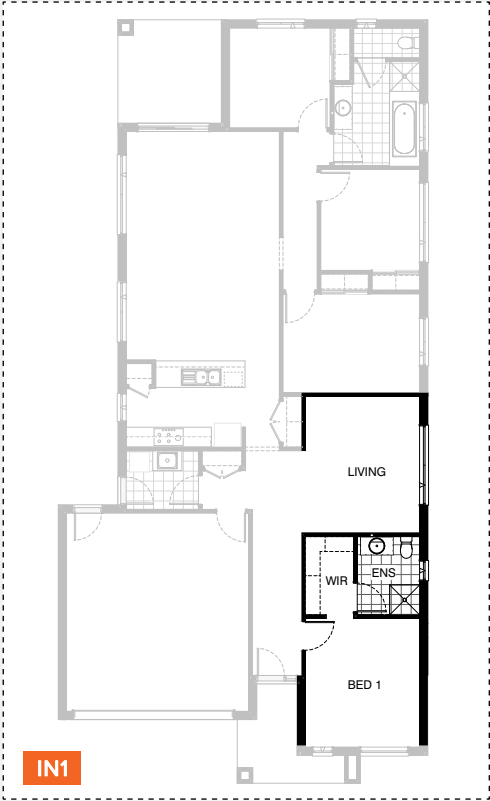


K4



K5

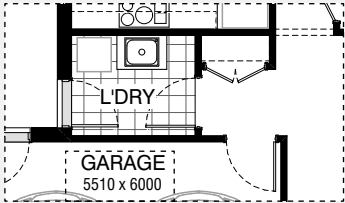
INTERNAL OPTIONS



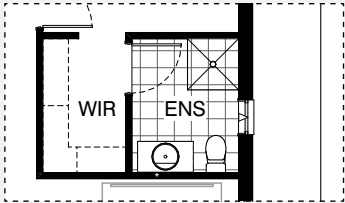


LAUNDRY OPTIONS

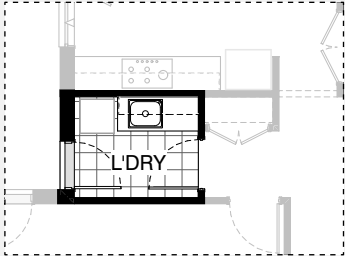
ENSUITE OPTIONS



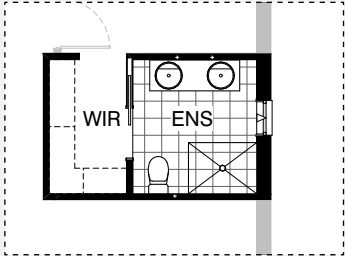
Master Laundry Design



Master Ensuite Design

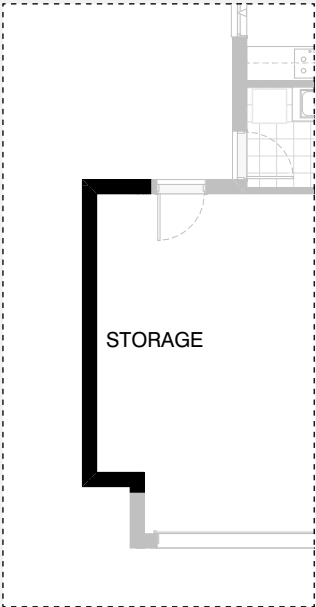


LD1

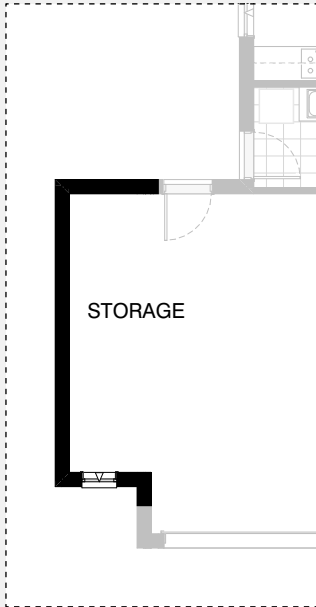


EN1

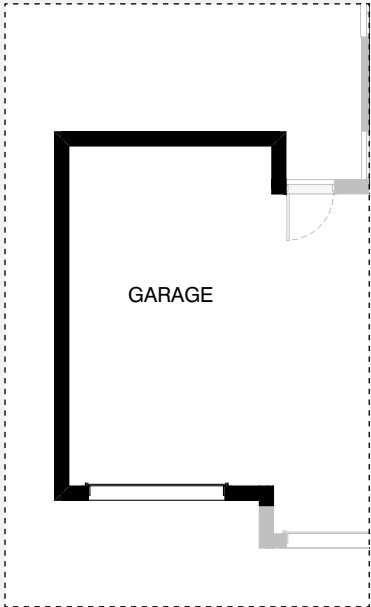
GARAGE OPTIONS



G1



G2



G3

# COVELLO 24

## OPTION DESCRIPTIONS

### Kitchen Option 01

Provide 1No. 300mm base cabinet,  
1No. 350mm base cabinet,  
2No. 800mm base cabinets,  
1No. 900mm base cabinet,  
1No. 450mm drawer unit,  
1No. 600mm & 2No. 800mm overhead cabinets,  
1No. 300mm laminated overhead open shelves,  
1No. laminated MW provision with pot drawer below,  
1No. laminated DW provision,  
1No. 900mm underbench oven with 900mm cooktop & 900mm retractable rangehood,  
open shelf above refrigerator space,  
additional benchtop and tiled splashback to suit.  
Convert Brooms into Pantry.

### Kitchen Option 02

Provide Kitchen and WIP option, delete Linen cupboard,  
2No. 520mm flush panel hinged doors and  
4No. shelves, reduce Laundry passage by 140mm and  
provide site build plaster lined W.I.P with 4No. 300mm deep shelves,  
4No. 450mm deep shelves and  
1No. 720mm flush panel hinged door.  
Provide 1No. 450mm base cabinet,  
1No. 900mm base cabinet,  
1No. laminated DW provision,  
1No. laminated MW provision with pot drawer below,  
open shelf above refrigerator space,  
1No. 450mm drawers,  
1No. 600mm base cabinet,  
1No. 800mm blind carcass with 1No. 350 door,  
1No. 900mm underbench oven with 900mm cooktop & 900mm retractable rangehood,  
1No. 600mm overhead cabinet,  
1No. 900mm overhead cabinet and  
1No. 1200mm x 850mm aluminium fixed window with no bottom reveal and  
additional tiled splashback and benchtop to suit.  
Relocate Linen to passage and extend width by 740mm,  
2No. 820mm flush panel hinged doors in lieu of standard.

### Kitchen Option 03

Provide Option Upgrade with 'L' shaped Kitchen,  
Butlers Pantry and walk through Laundry.  
Kitchen:  
Provide 1No. 900mm cooktop,  
900mm underbench oven with 900mm retractable rangehood.  
Provide 2No. 300mm cabinets and  
1No. 400mm base cabinet,  
1No. 450mm base cabinet,  
1No. 900mm base cabinet,  
1No. 1050mm blind carcass with 2No. 300mm doors and  
1No. 450mm drawer unit, 1No. 300mm cabinet,  
1No. 800mm overhead cabinet, 1No. laminated DW provision,  
1No. laminated MW provision with pot drawer below,  
open shelf above refrigerator space and  
additional benchtop and tiled splashback to suit.  
Provide 1No. 1200mm x 1810mm aluminium fixed window with no bottom reveal in lieu of standard.  
Butlers:  
Provide 1No. 350mm base cabinet,  
1No. 900mm base cabinet,  
1800mm high open adjustable shelves,  
1No. single bowl sink with drainer,  
benchtop and tiled splashback to suit.  
Relocate Garage access door to suit and  
relocate Linen next to refrigerator space to suit.

### Kitchen Option 04

Provide Kitchen upgrade including relocation of Linen to passage to create W.I.P, 800mm deep Kitchen island bench.  
Provide 900mm cooktop and underbench oven,  
900mm retractable rangehood,  
1No. 600mm base cabinet,  
2No. 800mm corner base cabinets,  
2No. 150mm base cabinets,  
1No. 900mm base cabinet,  
1No. 450mm drawer unit,  
1No. DW provision,  
1No. laminated MW provision with pot drawer below,  
1No. 600mm overhead cabinet,  
1No. 700mm overhead cabinet,  
1No. 900mm corner overhead cabinet,  
1No. 400mm overhead cabinet,  
1No. 900mm overhead cabinet,  
1No. 350mm overhead cabinet,  
open shelf above refrigerator space including 16mm laminated end panel and  
additional benchtop and tiled splashback to suit.  
Provide 514mm x 2410mm aluminium fixed window to Kitchen splashback with  
no bottom reveal in lieu of standard.  
Note: Reduces Meals by 200mm.

### Kitchen Option 05

Provide Kitchen and W.I.P option by increasing Laundry width by 30mm,  
relocate Linen cupboard to Passage and  
provide site build plaster lined W.I.P with  
4No. 300mm deep shelves, 4No. 450mm deep shelves and  
1No. 720mm flush panel hinged door.  
Provide 1No. 450 drawer unit and  
1No. laminated MW provision with pot drawer below,  
1No. DW provision,  
1No. 800mm base cabinets to island,  
1No. 350mm base cabinet,  
1No. 800mm blind corner base cabinet,  
1No. 150mm base cabinet,  
1No. 900mm base cabinet,  
1No. 300mm base cabinet,  
1No. 350mm overhead cabinet,  
1No. 900mm overhead cabinet with retractable rangehood,  
1No. 900mm overhead cabinet and  
open shelf above refrigerator space.  
Provide 1200mm x 1810mm aluminium fixed window with no bottom reveal in lieu of standard window, 900mm appliances and additional benchtop and splashback to suit. Convert Brooms to Linen.

### Internal Option 01

Relocate Living with Bed 1,  
Ensuite and W.I.R and provide  
1No. 1800mm x 2410mm aluminium  
awning window in lieu of standard.

### Internal Option 02

Provide Real Flame Inspire 900 Gas fireplace, 400mm off floor level in a 1400mm x 500mm boxed out plaster wall with a 4 sided black fascia to Family room side wall with capped gas point and delete 1No. standard window from Family.



# COVELLO 24

## OPTION DESCRIPTIONS

### Internal Option 03

Mirror rear section of Home:  
Increase length of Linen cupboard with  
2No. 820mm hinged doors in lieu of standard.  
Provide W.I.R 2 to Bed 2 in lieu of Robe.  
Relocate Bed 3 Robe adjacent to WC and  
relocate window to suit.  
Decrease Family size to 3110mm x 4640mm,  
Meals size to 3000mm x 4640mm,  
Bed 1 size to 3600mm 3470mm and  
Living size to 3600mm x 3470mm.  
Original Brooms to be removed due to new layout.  
Provide 1200mm x 1450mm aluminium awning window  
to Bed 3 in lieu of standard.

### Internal Option 04

Provide alternate floor plan option by reducing  
Bed 1 by 140mm towards rear of home and  
extend Ensuite and W.I.R.  
Extend Bed 1 and W.I.R by 130mm into Passage including  
reduce Broom and provide 300mm deep shelves in lieu of 450mm.  
Remove 870mm door to Ensuite and provide 900mm opening via W.I.R.  
Relocate 900mm tiled shower base.  
Move Ensuite window 240mm towards rear of home and  
provide 1782mm vanity unit with double basin in lieu of standard.

### Laundry Option 01

Provide Laundry Upgrade with laminated inset trough,  
1No. 900mm base cabinet,  
1No. 450mm base cabinet,  
1No. 900mm overhead cabinet,  
1No. 450mm overhead cabinet and  
additional tiled splashback and benchtop to suit.

### Ensuite Option 01

Provide Ensuite option with  
1No. 1200mm x 900mm tiled shower base  
in lieu of standard,  
1No. 1582mm wide vanity unit with  
2No. basin in lieu of standard and  
increase Ensuite width by 300mm,  
decrease W.I.R width by 100mm and  
decrease Entry width by 200mm.  
Provide 870mm cavity sliding door off  
W.I.R in lieu of 870mm hinged door.

### Garage Option 01

Provide extension to Garage to  
create additional Storage area.  
Increases area by 4.53m<sup>2</sup>.  
Increases width by 840mm.

### Garage Option 02

Provide extension to Garage to create  
Storage area including additional  
2057mm x 610mm aluminium awning feature window  
Increases area by 7.76m<sup>2</sup>.  
Increases width by 1440mm.

### Garage Option 03

Provide triple car Garage including  
additional 2140mm x 2410mm  
Garage door as per colour selection.  
Increases area by 23.69m<sup>2</sup>.  
Increases width by 3600mm.

