

Facades available:	
Lachlan, Barrington, Flinders	
Cooper, Nepean	
Overall home width	11.15m
Overall home length	25.07m

Residence	180.3m ²	19.4sq
Garage	36.5m ²	3.9sq
Porch	5.8m ²	0.6sq
Alfresco	14.2m ²	1.5sq
Total	236.8m²	25.5sq

FLOORPLAN OPTIONS

We personalise our floorplans. Talk to us about our huge range of ready-to-go design options.

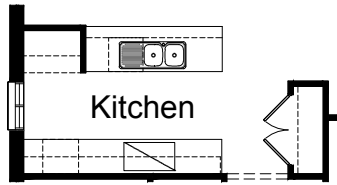
Listed details based on Lachlan facade floorplan (illustrated)

*Copyright conditions. All photos and illustrations are representative only. Floor plans and specifications may be varied by Burbank without notice, the dimensions are diagrammatic only and a Building Contract with final drawings will display correct dimensions and detail. All designs are the property of Burbank and must not be used, reproduced, copied or varied, wholly or in part without written permission from an authorised Burbank representative. Copyright Burbank Australia (NSW) Pty Ltd. ABN 88 610 822 770. NSW BL 295627C ACT BL 2016566.

Call 13 BURBANK
Visit burbank.com.au

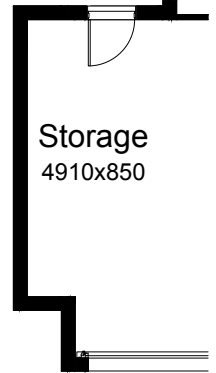
OPTION K1

Provide Kitchen upgrade with 2no. 800mm base cupboards, 1no. laminated MW provision with pot drawer below, 1no. 300mm base cupboard, 1no. 900mm upright cooker with 900mm canopy range hood above, 3no. 600mm overhead cupboards, 1no. 300mm laminated overhead open shelves, 1no. laminated open shelf above refrigerator space, 1no. 350mm base cupboard, 1no. laminated DW provision, 1no. 900mm base cupboard and 1no. 450mm drawers with additional bench top and tiled splash back to suit.



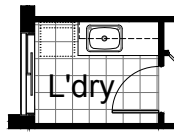
OPTION G1

Provide extension to Garage to create additional Storage area. Increases area by 4.58m². Increases width by 850mm.



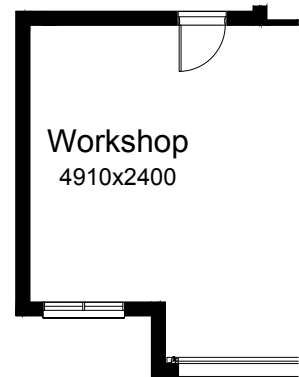
OPTION LD1

Provide Laundry upgrade with laminated insert trough, 1no. 900mm base cupboard, 1no. 450mm base cupboard, 1no. 900mm overhead cupboard, 1no. 450mm overhead cupboard and additional tiled splash back and bench top to suit.



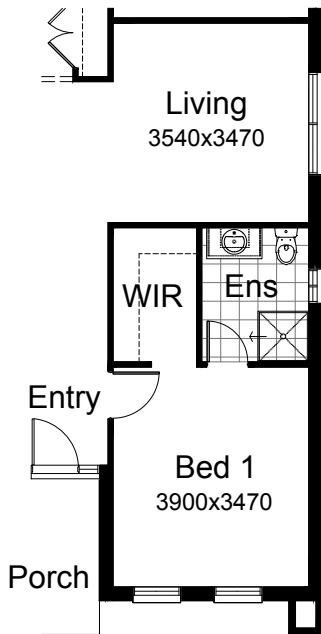
OPTION G2

Provide extension to Garage to create Workshop area including additional window to suit. Increases length by 2400mm. Increases area by 12.93m².



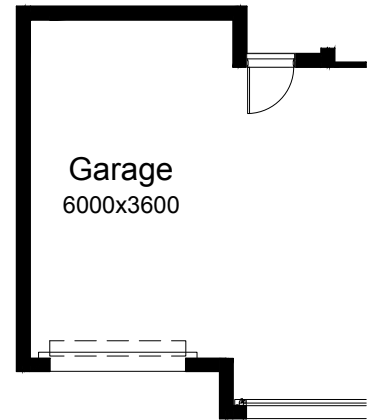
OPTION IP1

Relocate Living with Bed 1, Ensuite and WIR.



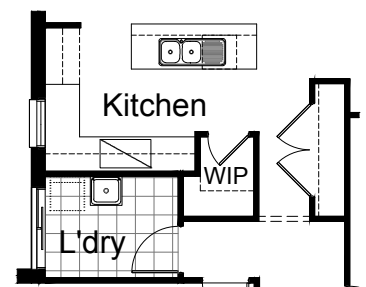
OPTION G3

Provide triple car Garage including additional roller door to front. Increases area by 23.69m². Increases width by 3600mm.



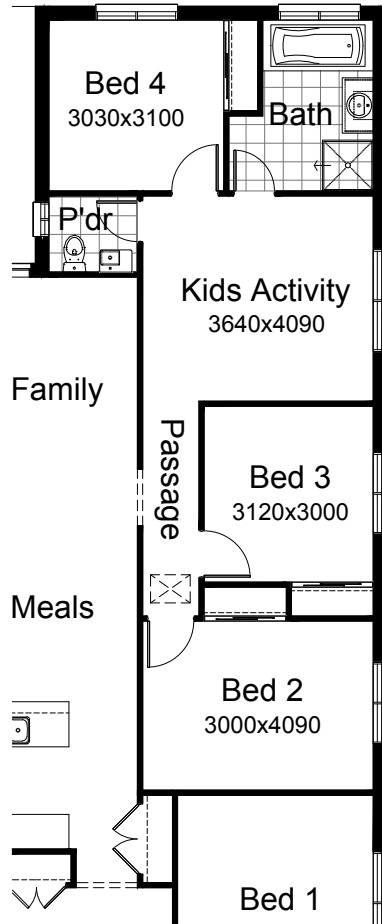
OPTION K2

Provide Kitchen and WIP Option by increasing Laundry width by 160mm, delete Linen cupboard, 2no. 520mm flush panel hinged doors and 3no. shelves, reduce L'dry passage by 200mm and provide site build plaster lined WIP with 3no. 300mm deep shelves, 3no. 450mm deep shelves, and 1no. 720mm flush panel hinged door. Decrease Kitchen opening/Bulkhead width by 190mm to 900mm in lieu of standard 1090mm. Provide 1no. 300mm base cupboards, 1no. 900mm base cupboard, 1no. laminated DW provision, 1no. 400mm base cupboard, 1no. laminated open shelf above refrigerator space, 1no. 450mm drawers, 1no. 800mm blind carcass with 1no. 350mm door, 1no. 900mm under bench oven with 1no. 900mm retractable range hood, 1no. 600mm overhead cupboard, 1no. 900mm overhead cupboard and 1no. 1200mm x 850mm aluminium fixed window with no bottom reveal and additional tiled splash back and bench top to suit. Rename Pantry cupboard into Linen cupboard and extend by 800mm and provide 2no. 820mm flush panel hinge doors in lieu of standard..



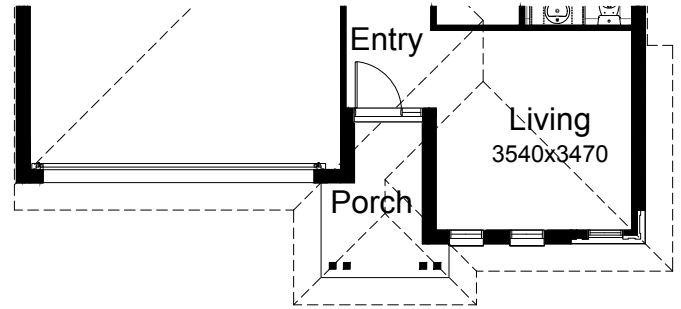
OPTION IP2

Provide Kids Activity with additional 1no. 1200mm x 1810mm aluminium sliding window in lieu of Study and relocate Pantry, Bed 2, Bed 3 and Passage opening to suit. Delete WIL and provide additional Powder room in lieu of standard WC including an additional wall hung basin.



OPTION EP1

Provide Modified Porch to Barrington Facade by increasing Porch depth by 600mm and providing additional 2no. painted timber posts to suit.
Note: Increase Porch area to 4.61m² in lieu of standard 3.25m²

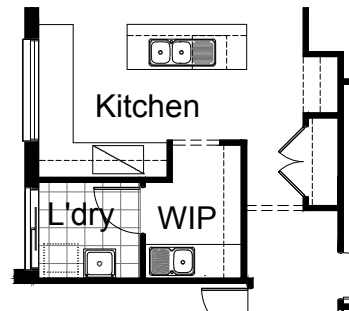
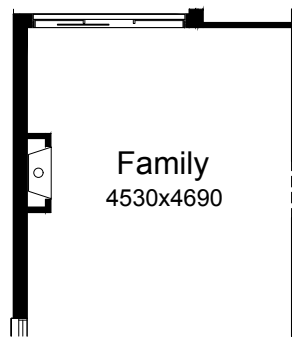


OPTION K3

Provide option upgrade with 'L' shaped Kitchen, Butlers Pantry and walk through Laundry. Provide 1no. laminated open shelf above refrigerator space, 2no. 300mm base cupboards, 1no. 800mm base cupboards, 1no. DW provision, 1no. 1050mm blind carcass with 1no. 600mm door, 1no. 600mm base cupboard, 1no. 400mm base cupboard, 1no. 450mm drawers, 2no. 350mm base cupboards, 1no. 350mm overhead cupboard, 1no. 900mm overhead cupboard, 900mm under bench oven with 1no. 900 retractable range hood, 1no. 1200mm x 1800mm aluminium fixed window in lieu of standard 1no. 1800mm x 850mm sliding window, additional tiles splash back and bench top to Kitchen. Provide additional 1no. 400mm base cupboard, 1no. 900mm base cupboard, 1800mm high laminated open shelves, 1no. single bowl sink with drainer and tiled splash back and bench top to suit.

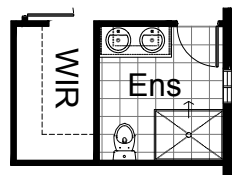
OPTION IP3

Provide Jetmaster SL-350 gas fireplace, 400mm off floor level in a 1400mm x 420mm boxed out plaster wall with a 4 sided black fascia to Family room side wall and delete 1no. 514mm x 2410mm aluminium sliding window to Family.



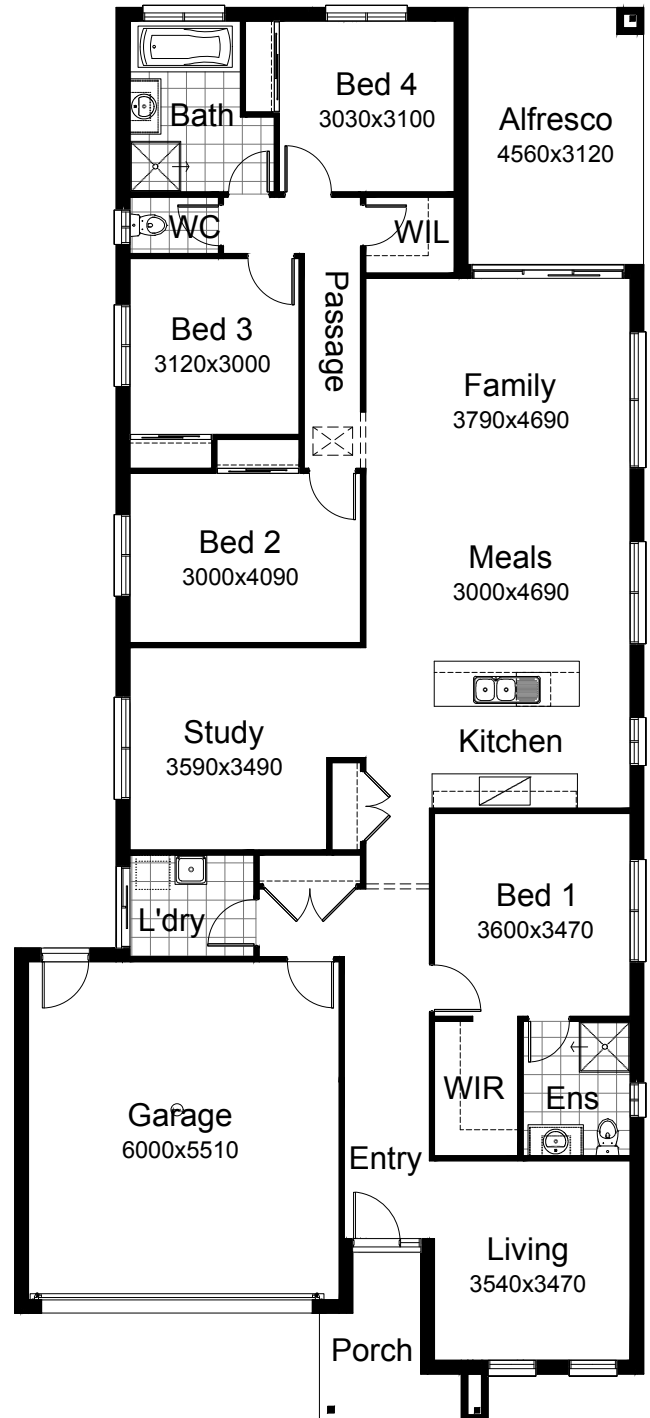
OPTION ENS1

Provide Ensuite Option with additional 1no. 1200mm x 900mm tiled shower base in lieu of standard, 1no. 1282mm wide vanity unit with 2no. basins in lieu of standard and increase Ensuite width by 300mm and decrease WIR width by 100mm and decrease Entry width by 200mm.



OPTION IP4

Mirror rear section of Home and increase length of Linen cupboard with 2No. 820mm hinged doors in lieu of 2No. 520mm doors. Increase Study size to 3590mm x 3490mm and provide ASW1818 aluminium sliding window in lieu of ASW1215. Decrease Family size to 3790mm x 4690mm and Bed 1 size to 3600mm x 3470mm.



OPTION EP2

Provide Manning facade as displayed

