

Facades available:	
Lachlan, Barrington, Flinders	
Cooper, Nepean, Austin	
Overall home width	14.03m
Overall home length	24.35m

Residence	259.5m ²	27.9sq
Garage	36m ²	3.9sq
Porch	5.6m ²	0.6sq
Alfresco	20.2m ²	2.2sq
Total	321.2m²	34.6sq

FLOORPLAN OPTIONS

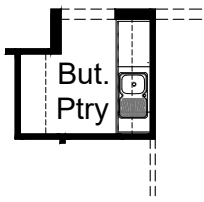
We personalise our floorplans. Talk to us about our huge range of ready-to-go design options.

Listed details based on Lachlan facade floorplan (illustrated)

*Copyright conditions. All photos and illustrations are representative only. Floor plans and specifications may be varied by Burbank without notice, the dimensions are diagrammatic only and a Building Contract with final drawings will display correct dimensions and detail. All designs are the property of Burbank and must not be used, reproduced, copied or varied, wholly or in part without written permission from an authorised Burbank representative. Copyright Burbank Australia (NSW) Pty Ltd. ABN 88 610 822 770. NSW BL 295627C ACT BL 2016566.

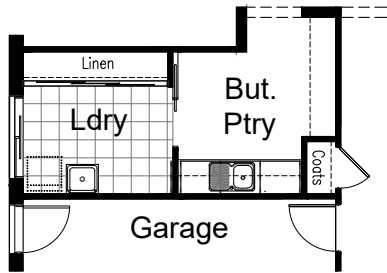
Call 13 BURBANK
Visit burbank.com.au

OPTION K1



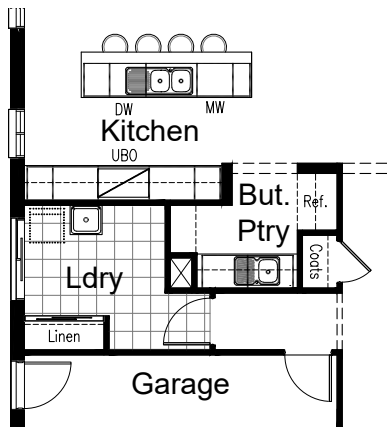
Provide Kitchen upgrade option including Butler's Pantry in lieu of Walk-in Pantry - Kitchen remains the same.

Butler's Pantry includes 2No. 800mm base cupboards, 1No. 450mm base cupboard, 2No. 800mm overhead cupboards, 1No. 450mm overhead cupboard, additional single bowl sink, with additional bench top and tiled splash back. Option removes Coats closet and Alcove to Passage.



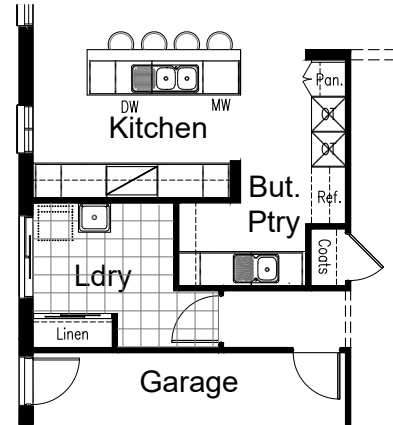
OPTION K2

Provide Kitchen upgrade option including Butler's Pantry in lieu of Walk-in Pantry, and rearranged Laundry layout with direct access through new Butler's Pantry - Kitchen remains the same. Butler's Pantry includes 3No. 700mm base cupboards, 3No. 700mm overhead cupboards, additional single bowl sink, with additional bench top and tiled splash back. Laundry includes 820mm cavity sliding access door, larger wall-to-wall Linen closet with 3No. sliding doors. Option removes Alcove to Passage and moves Garage access door.



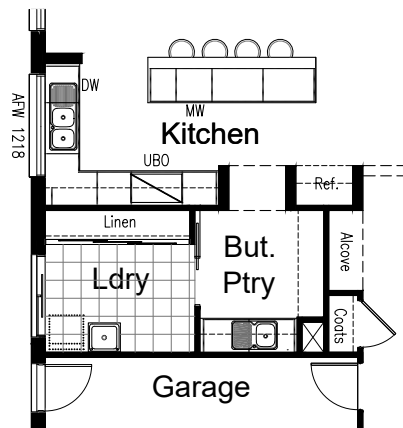
OPTION K3

Provide Kitchen upgrade option which moves location of Refrigerator space and includes Butler's Pantry in lieu of Walk-in Pantry. Kitchen now includes 900mm retractable rangehood, 900mm cooktop, 900mm under bench oven, 450mm drawer unit, dishwasher provision, microwave provision with pot drawer, 1No. 900mm base cupboard, 2No. 800mm base cupboards, 2No. 450mm base cupboards, 1No. 300mm base cupboard, 2No. 800mm overhead cupboards, 2No. 450mm overhead cupboards, additional bench top and tiled splash back. Butler's Pantry includes 2No. 800mm base cupboards, 2No. 800mm overhead cupboards, additional single bowl sink, Ref space with 900mm open shelf above, with additional bench top and tiled splash back. Laundry is reduced by 650mm and Linen closet is reduced by 440mm to accommodate and Alcove to Passage is removed.



OPTION K4

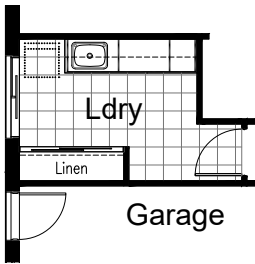
Provide Kitchen upgrade option which moves location of Refrigerator space and includes Butler's Pantry in lieu of Walk-in Pantry. Kitchen now includes 900mm retractable rangehood, 900mm cooktop, 450mm drawer unit, dishwasher provision, microwave provision with pot drawer, 2No. 900mm base cupboard, 2No. 800mm base cupboards, 2No. 450mm base cupboards, 2No. 800mm overhead cupboards, 2No. 450mm overhead cupboards, 2No. oven towers, 1No. 600mm Pantry closet, additional bench top and tiled splash back. Butler's Pantry includes 2No. 900mm base cupboards, additional single bowl sink, Ref space with 900mm open shelf above, 1800mm(h) laminated shelving, with additional bench top and tiled splash back. Laundry is reduced by 650mm and Linen closet is reduced by 440mm to accommodate and Alcove to Passage is removed.



OPTION K5

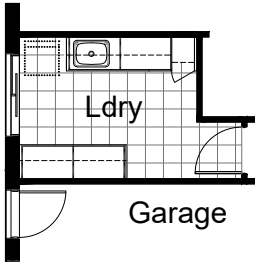
Provide Kitchen upgrade option including L-shaped bench tops, moves location of sink and Refrigerator space and includes Butler's Pantry in lieu of Walk-in Pantry, and rearranged Laundry layout with direct access through new Butler's Pantry. Kitchen now includes 900mm retractable rangehood, 900mm cooktop, 900mm under bench oven, 450mm drawer unit, dishwasher provision, microwave provision with pot drawer, 3No. 900mm base cupboards, 2No. 600mm base cupboards, 1No. 900mm corner base cupboard, 1No. 800mm overhead cupboard, 2No. 600mm overhead cupboards, Ref space with 900mm open shelf above, additional bench top and tiled splash back, and additional AFW1218 fixed window behind sink in lieu of standard. Butler's Pantry includes 2No. 800mm base cupboards, 2No. 800mm overhead cupboards, additional single bowl sink, with additional bench top and tiled splash back. Laundry includes 820mm cavity sliding access door, larger wall-to-wall Linen closet with 3No. sliding doors. Option moves Garage access door.

*Copyright conditions. All photos and illustrations are representative only. Floor plans and specifications may be varied by Burbank without notice, the dimensions are diagrammatic only and a Building Contract with final drawings will display correct dimensions and detail. All designs are the property of Burbank and must not be used, reproduced, copied or varied, wholly or in part without written permission from an authorised Burbank representative. Copyright Burbank Australia (NSW) Pty Ltd. ABN 88 610 822 770. NSW BL 295627C ACT BL 2016566.



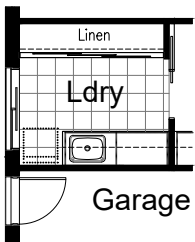
OPTION LD1

Provide Laundry upgrade including laminate base cupboards and stainless steel inset trough including 2No. 900mm base cupboards, 1No. 450mm base cupboard, 2No. 900mm overhead cupboards, 1No. 450mm overhead cupboard. additional bench top and tiled splashback to suit.



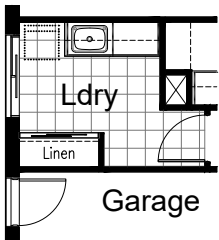
OPTION LD2

Provide Laundry upgrade including laminate base cupboards and stainless steel inset trough including 4No. 900mm base cupboards, 4No. 900mm overhead cupboards, 1No. 400mm Broom closet, additional bench top and tiled splashback to suit. Option removes Linen closet.



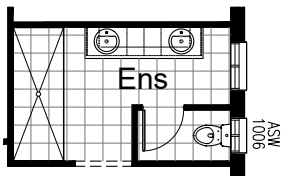
OPTION LD3

Provide Laundry upgrade including laminate base cupboards and stainless steel inset trough including 2No. 900mm base cupboards, 2No. 900mm overhead cupboards, additional bench top and tiled splashback to suit.
Note: option only available in conjunction with options K2 and K5.



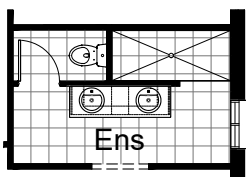
OPTION LD4

Provide Laundry upgrade including laminate base cupboards and stainless steel inset trough including 2No. 800mm base cupboards, 2No. 800mm overhead cupboards, additional bench top and tiled splashback to suit.
Note: option only available in conjunction with options K3 and K4.



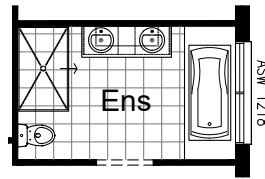
OPTION ENS1

Provide Ensuite upgrade including rearranged layout, enclosed WC with 720mm hinged door and ASW1006 sliding window, 2082mm vanity with double basins and 2360x900mm wall-to-wall tiled shower base.



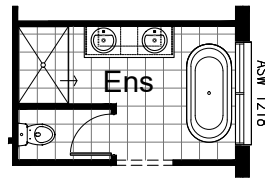
OPTION ENS2

Provide Ensuite upgrade including rearranged layout, enclosed WC with 720mm hinged door, 1782mm vanity with double basins and 2100x900mm wall-to-wall tiled shower base.



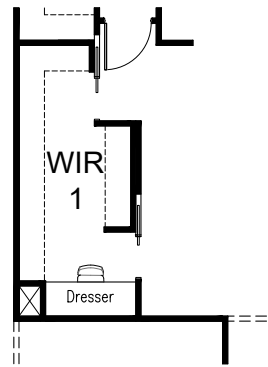
OPTION ENS3

Provide Ensuite upgrade including rearranged layout, relocated WC, 1582mm vanity with double basins, 1675 bath with tiled hob, 1500x900mm tiled shower base, and ASW1218 sliding window in lieu of standard.



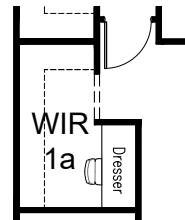
OPTION ENS4

Provide Ensuite upgrade including rearranged layout, enclosed WC with 720mm hinged door, 1582mm vanity with double basins, freestanding bath, 1370x900mm wall-to-wall tiled shower base, and ASW1218 sliding window in lieu of standard.



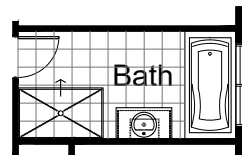
OPTION IP1

Provide Walk-in Robe upgrade including built-in 32mm laminate bench top 600mm deep and 2No. 720mm cavity sliding doors. Option also removes dividing wall between WIR1a and WIR1b creating one large Walk-in Robe.



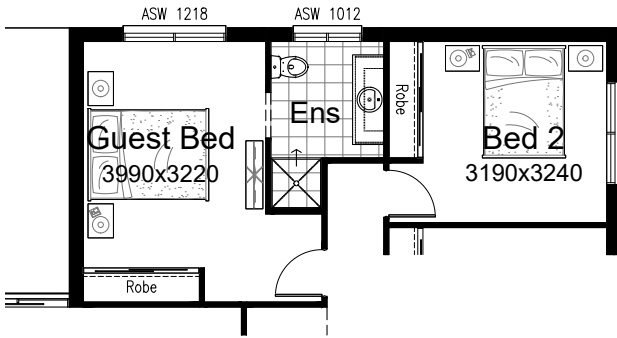
OPTION IP2

Provide Walk-in Robe upgrade including built-in 32mm laminate bench top 600mm deep in lieu of 450mm shelving to one run of wall in the WIR1a section of the Walk-in Robe.



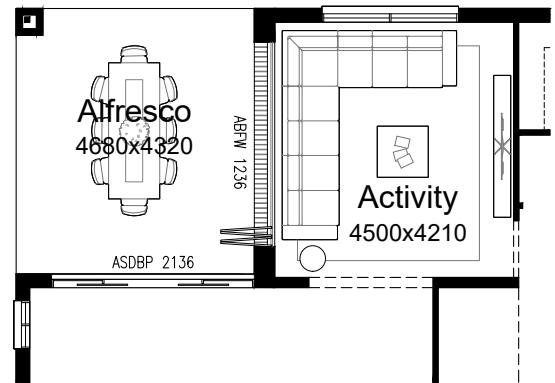
OPTION IP3

Provide Bathroom upgrade including 1500x900mm tiled shower base and 982mm vanity in lieu of standard.



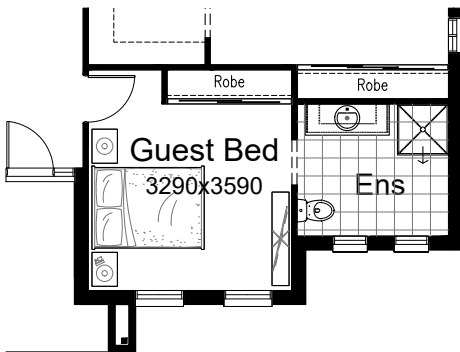
OPTION IP4

Provide Guest Bed with Ensuite option in lieu of Activity. Guest Bed includes built-in Robe and ASW1218 sliding window in lieu of standard. Ensuite includes 900x900mm tiled shower base, 1582mm vanity and WC, with ASW1012 sliding window. Option removes ABPSD 2136 bi-parting sliding door and opening to Meals. Bed 2 Walk-in Robe replaced with standard built-in Robe with sliding doors to accommodate. Hinged door to Bed 2 also moves.



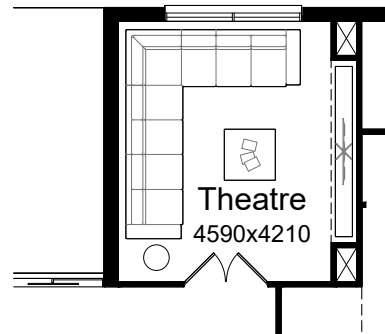
OPTION IP7

Provide bi-fold window option which replaces 1No. ABPSD 2136 bi-parting sliding door with 1No. ABFW 1236 aluminium bi-fold window. Option includes double thickness brickwork to Alfresco/Activity wall to create deepend brick sill to bi-fold window.



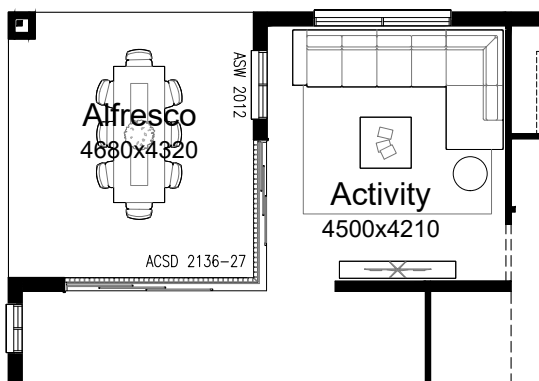
OPTION IP5

Provide Guest Bed with Ensuite option in lieu of Living and Retreat to Bed 1. Guest Bed includes built-in Robe and Bed 1 gets built-in Robe also. Ensuite includes 900x900mm tiled shower base, 1482mm vanity and WC. Includes 820mm hinged door to Guest Bed in lieu of bulkhead.



OPTION IP8

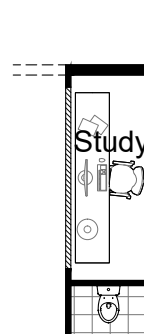
Provide Theatre option in lieu of Activity. Option replaces bulkhead with 2No. 720mm hinged doors, and removes bulkhead opening to passage. Option also includes 2No. voids and 300mm(d) bulkhead over to create entertainment space, removes 1No. ABPSD 2136 bi-parting sliding door and 1No. opening and bulkhead to Passage.



OPTION IP6

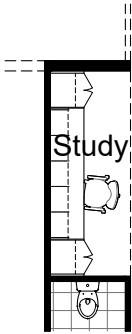
Provide corner sliding door option which replaces 2No. ABPSD 2136 bi-parting sliding doors with 1No. ACSD 2136-27 corner sliding door and ASW 2012 sliding window.

Option moves opening to Activity and removes the bulkhead.



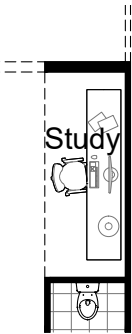
OPTION IP9

Provide 1200mm(h) x 3600mm(w) opening between Study and Meals



OPTION IP10

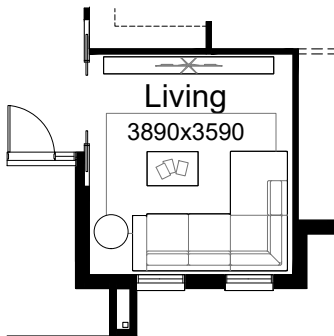
Provide built-in joinery and desk to Study including 2No. 600mm full-height cupboards with 4No. 450mm shelves, 5No. 450mm overhead laminated open shelves and 600mm deep built-in desk.



OPTION IP11

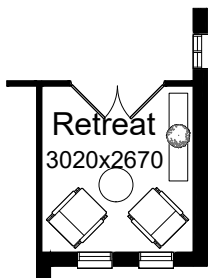
Provide Study option which flips the opening with bulkhead from Passage to Meals.

Note: Options IP9 and IP10 available in conjunction.



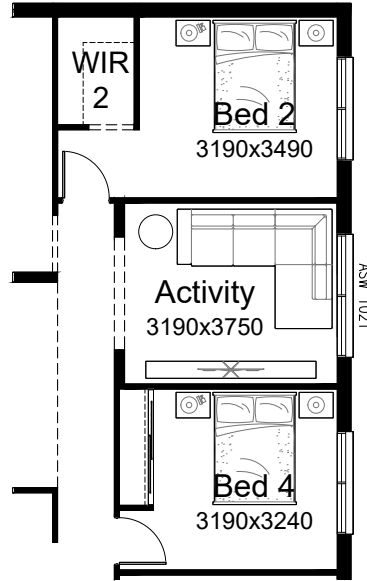
OPTION IP12

Provide Living option including 2No. 720mm bi-parting cavity sliding doors in lieu of bulkhead opening.



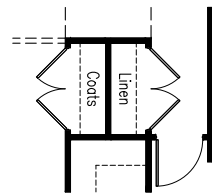
OPTION IP13

Provide Retreat option including 2No. 820mm hinged doors in lieu of bulkhead opening.



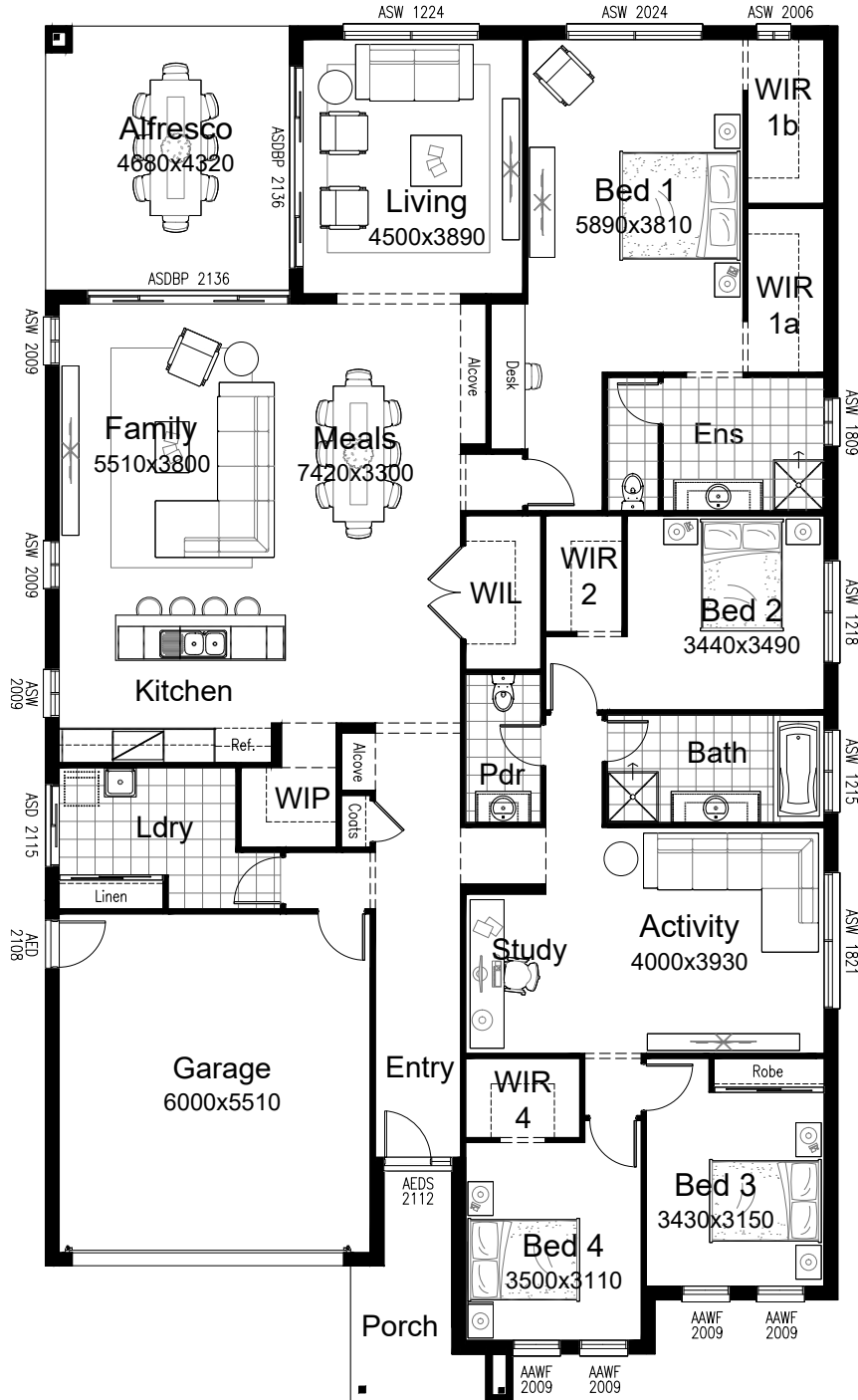
OPTION IP14

Provide Activity option in lieu of Bed 3. Option removes built-in Robe and 820mm hinged door and provides bulkhead opening, and provides ASW 1021 sliding window in lieu of standard.



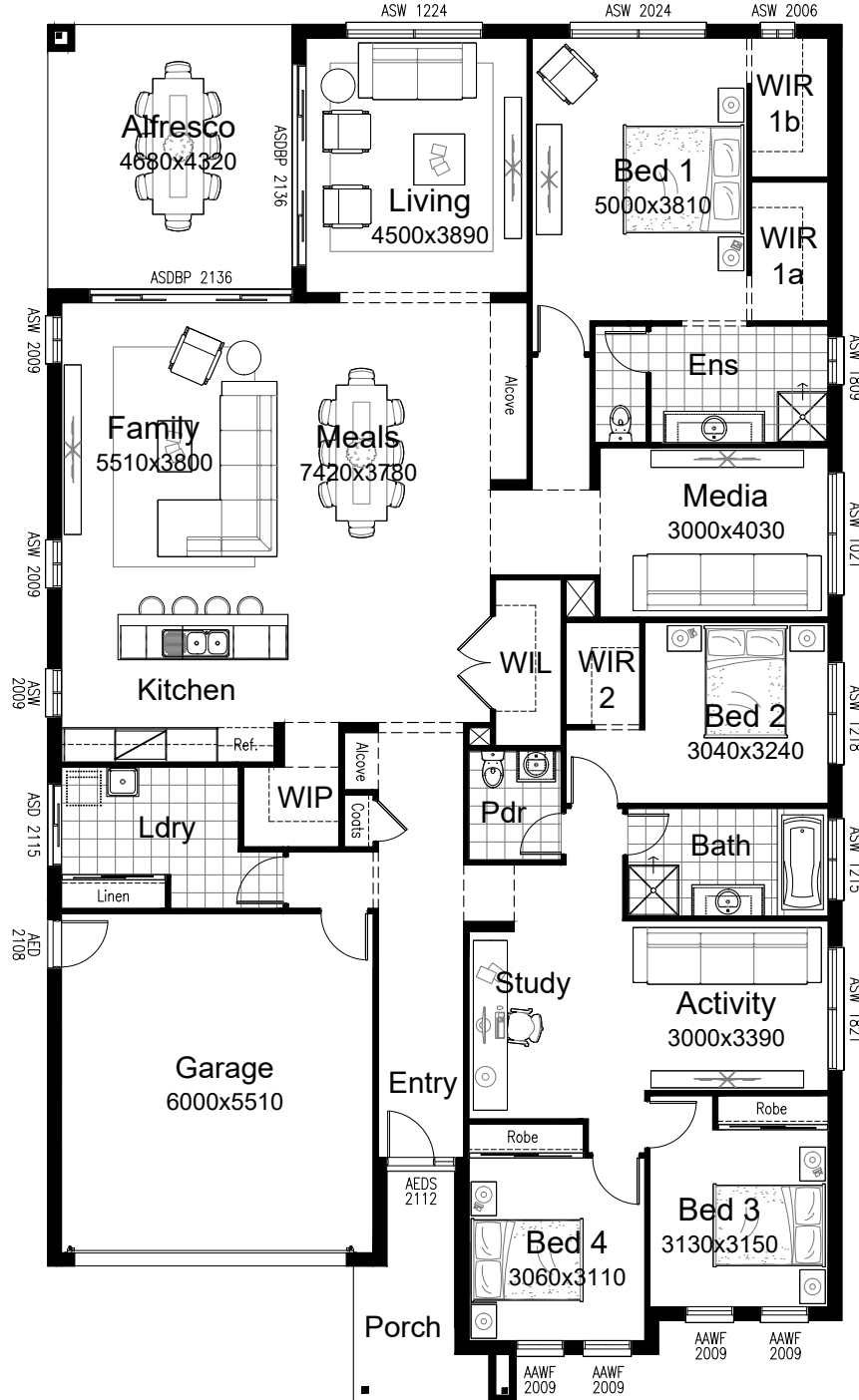
OPTION IP15

Provide Coats and Linen closet option in lieu of standard Walk-in Linen. Option removes 1No. 820mm hinged door and provides 4No. 720mm hinged doors. Option also adds 390mm to WIR1a to Bed 1.



OPTION IP16

Provide alternative floor plan option which provides Bed 1 to the rear of the home.



OPTION IP17

Provide alternative floor plan option which provides Bed 1 to the rear of the home. This option compresses the size of the Bedrooms and the Activity and provides additional Media room.