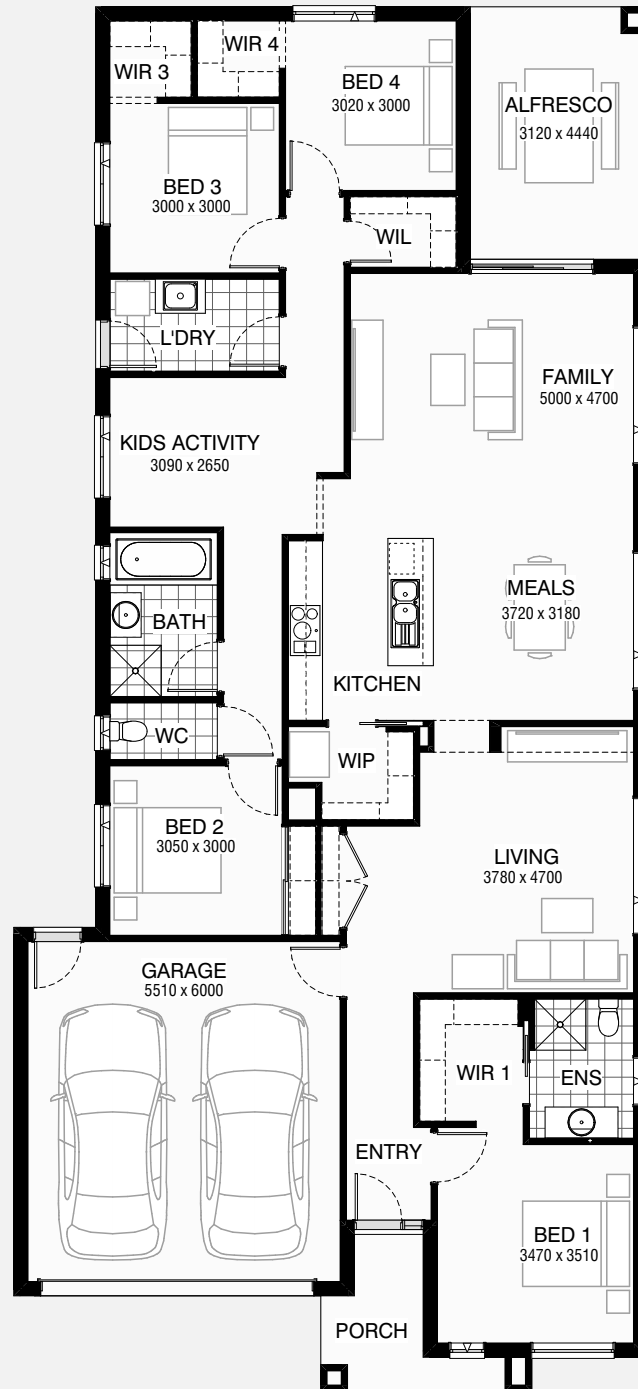


KENWOOD 26

4 2 2

Total squares 25.6sq



B
SERIES

Minimum Lot Width
12.5m

Minimum Lot Length
32.0m

Design Dimensions
11,150mm(W) x 24,350mm(L),

Facade Choices
Brentwood, Glendale, Inglewood,
Malibu, Northridge, Pasadena, Santa Monica.
Details based on Inglewood façade floorplan (illustrated)

DESIGN DIMENSIONS

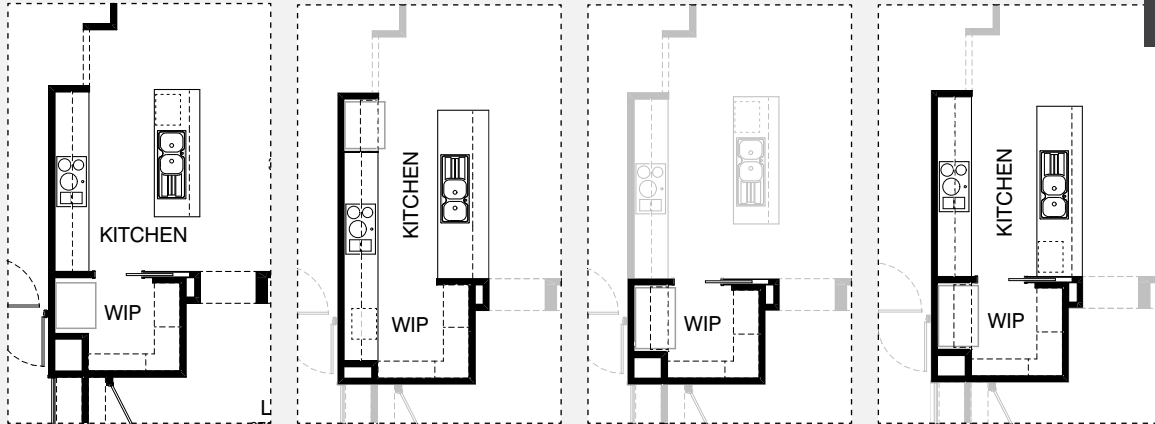
Residence	182.1m ²	19.6sq
Garage	36.5m ²	3.9sq
Porch	5.5m ²	0.6sq
Alfresco	13.9m ²	1.5sq
Total	237.9m²	25.6sq

Burbank 

*Copyright conditions. All photos and illustrations are representative only. Floor plans and specifications may be varied by Burbank without notice, the dimensions are diagrammatic only and a Building Contract with final drawings will display correct dimensions and detail. All designs are the property of Burbank and must not be used, reproduced, copied or varied, wholly or in part without written permission from an authorised Burbank representative. Copyright Burbank Australia Pty Ltd. ABN 91 007 099 872. Builders Registration Number CDB-U-52603.



KITCHEN OPTIONS



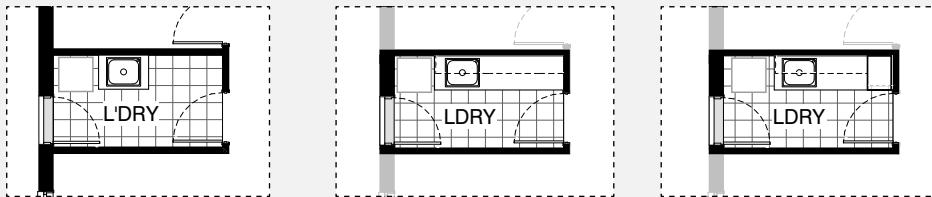
Master Kitchen Design

K1

K2

K3

LAUNDRY OPTION

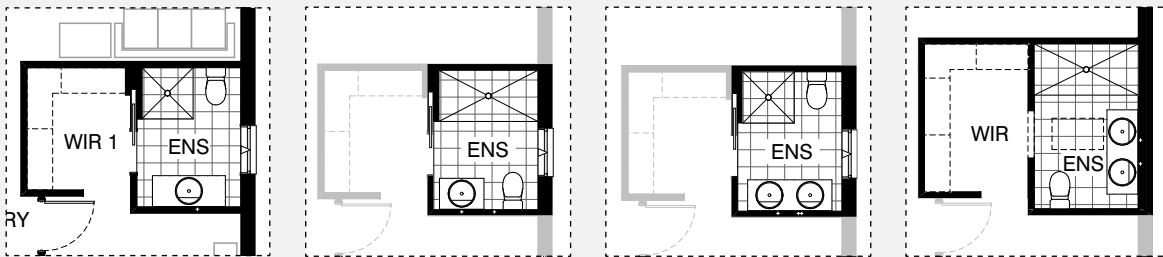


Master Laundry Design

LD1

LD2

ENSUITE OPTIONS

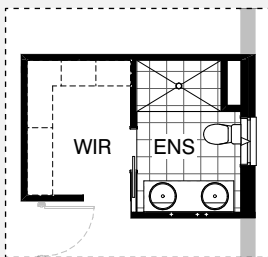


Master Ensuite Design

EN1

EN2

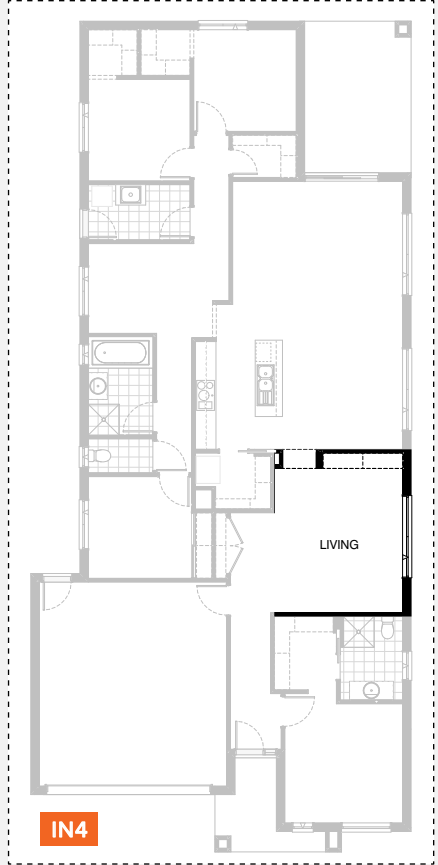
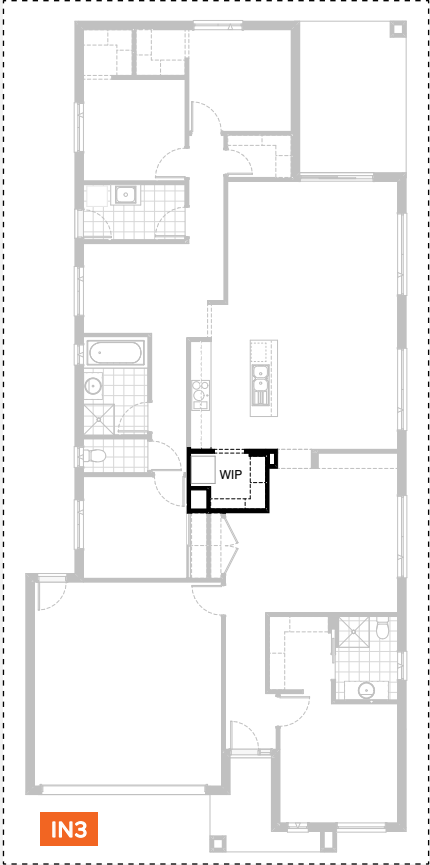
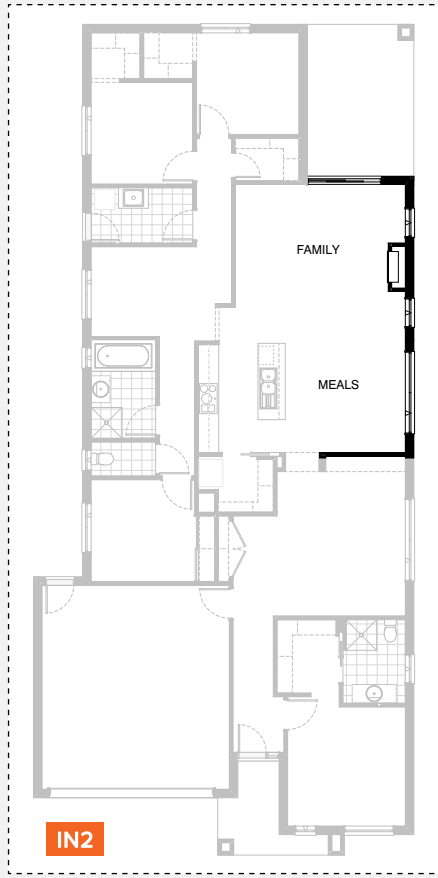
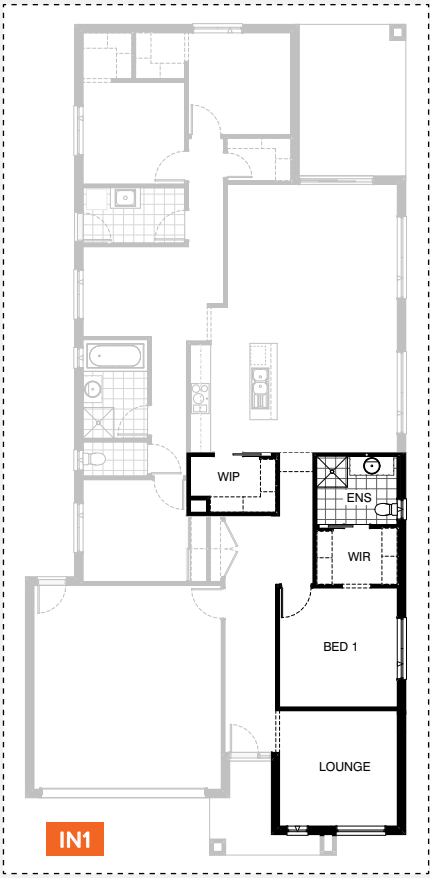
EN3



EN4

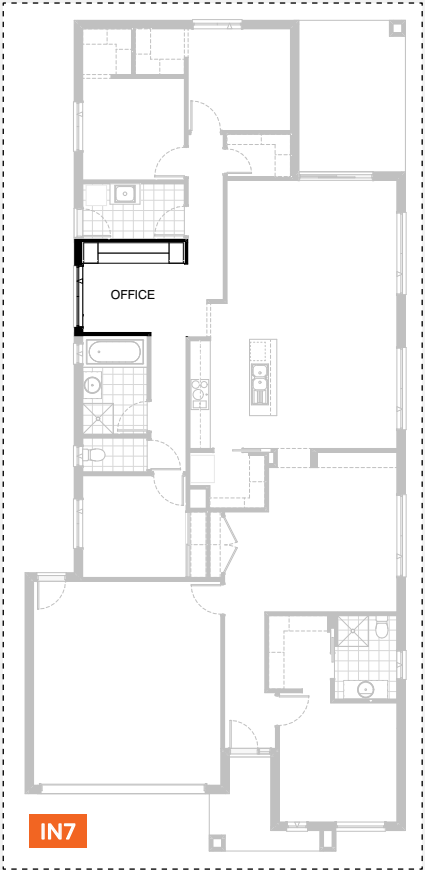
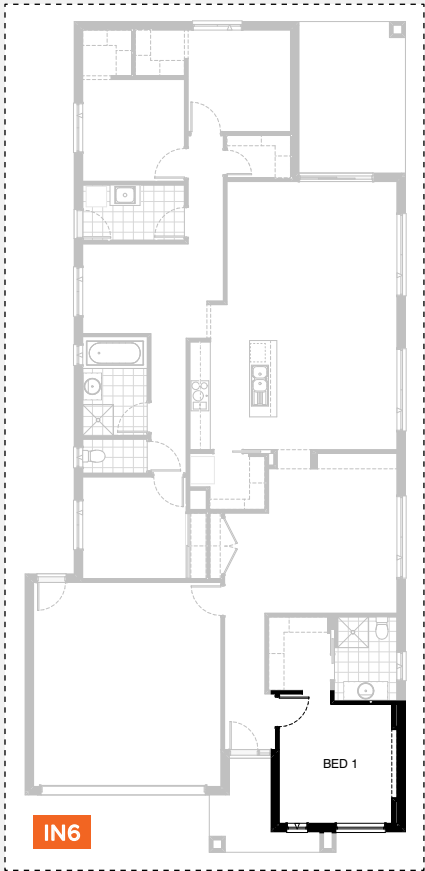
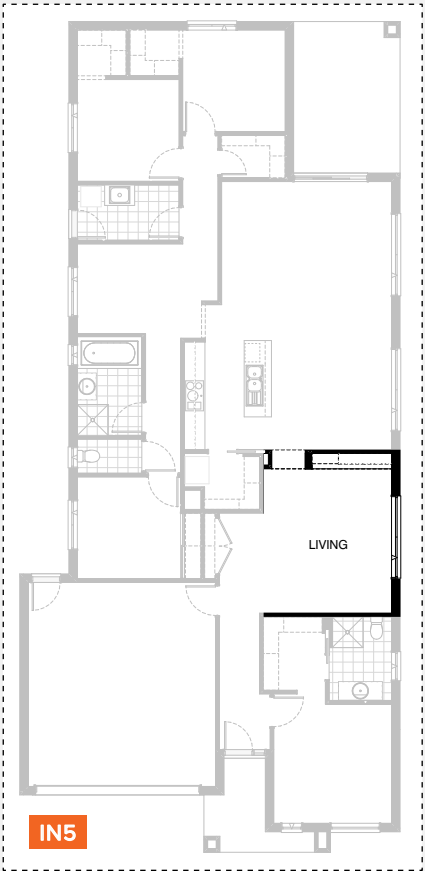
KENWOOD 26

4 2 2

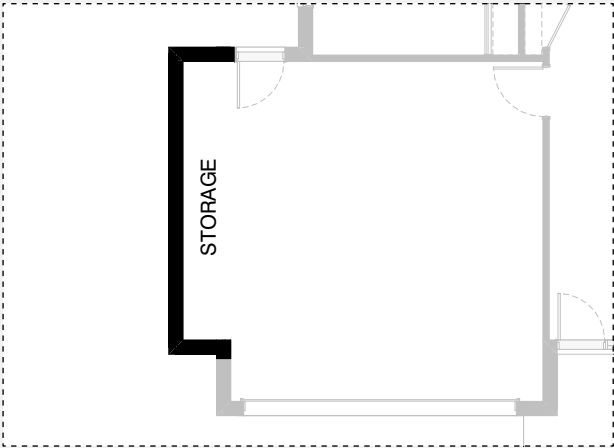


KENWOOD 26

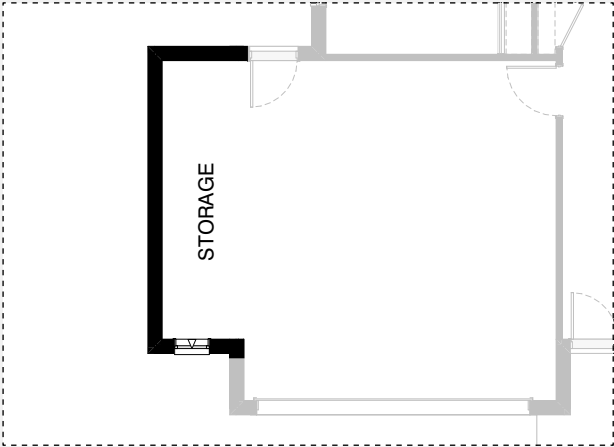
4 2 2



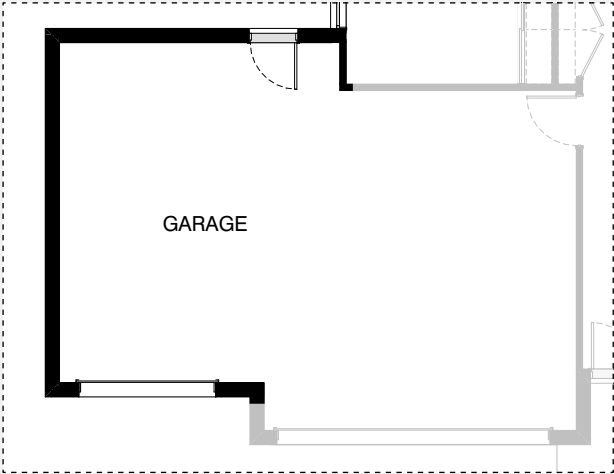
GARAGE OPTIONS



G1



G2



G3

KENWOOD 26

OPTION DESCRIPTIONS

Kitchen Option 01

Provide Kitchen upgrade including removing wall between Kitchen and W.I.P and cavity sliding door.
Relocate island bench against W.I.P wall and provide
2No. 900mm base cabinets,
1No. 610mm DW. provision and
1No. 450mm drawers in lieu of standard.
Reduce void in W.I.P and relocate refrigerator space to other end of Kitchen bench.
Extend Kitchen bench to include
1No. 300mm base cabinet,
2No. 900mm base cabinets,
632mm MW. provision,
Provide 3No. 900mm overhead cabinet and open shelf above refrigerator space.

Kitchen Option 02

Provide Kitchen Upgrade with open shelf above refrigerator space

Kitchen Option 03

Provide Kitchen upgrade with
1No. laminated MW provision with pot drawer below,
1No. 900mm base cabinet,
3No. 300mm base cabinets,
DW provision,
1No. 450mm drawers,
2No. 800mm base cabinets,
2No. 300mm overhead cabinets,
2No. 800mm overhead cabinets,
900mm retractable rangehood in overhead cabinet,
900mm cooktop and 900mm underbench oven.
Provide open shelf above Ref. space and additional benchtop and tiled splashback to suit.

Laundry Option 01

Provide Laundry upgrade with inset trough
2No. 900mm base cabinets,
1No. 400mm base cabinet,
2No. 900mm overhead cabinets,
1No. 400mm overhead cabinet and additional tiled splashback and benchtop to suit.

Laundry Option 02

Provide Laundry Upgrade to include:
400mm laminated broom unit,
inset trough,
2No. 800mm base cabinets and
2No. 800mm overhead cabinets.

Ensuite Option 01

Provide Ensuite option with
1740mm x 900mm wall to wall tiled shower base in lieu of standard
1No. 782mm vanity unit in lieu of standard

Ensuite Option 02

Provide Ensuite Upgrade by providing
1482mm wide vanity with
double basins in lieu of standard.

Ensuite Option 03

Provide Ensuite upgrade to include:
1830mm x 900mm wall to wall tiled shower base in lieu of standard.
Delete nib stud wall in Ensuite and
Provide 1482mm wide vanity with double basins in lieu of standard and reduce Living by 450mm to create larger Ensuite & W.I.R.
Delete window in Ensuite and provide 550mm x 980mm fixed Velux skylight .
Relocate Living room window 120mm towards rear of house.

Ensuite Option 04

Provide Ensuite option with
1No. 1480mm x 900mm tiled shower base in lieu of standard,
1No. 1582mm wide vanity unit with 2No. basins in lieu of standard.
1No. 1029mm x 850mm aluminium awning window in lieu of standard.
Increase Ensuite and W.I.R length by 220mm and reduce Living accordingly.

Internal Option 01

Provide Lounge area and relocate Bedroom 1, W.I.R and Ensuite in lieu of Living, delete standard window to Ensuite and provide 1No. 1029mm x 610mm aluminium awning window.
Add 1No. 1800mm x 1810mm aluminium awning window to Bed 1 and extend W.I.P width by 310mm to suit.

Internal Option 02

Provide Real Flame Inspire 900mm gas fireplace, 400mm off floor level in a 1400mm x 500mm boxed out plaster wall with a 4 sided black fascia to Family room side wall with capped gas point including
2No. 1800mm x 850mm aluminium awning windows in lieu of standard.

Internal Option 03

Provide plaster bulkhead 900mm wide opening to W.I.P. in lieu of standard cavity sliding door.

Internal Option 04

Provide 4No. 450mm wide x 32mm thick laminated shelves to Living alcove.

Internal Option 05

Provide cabinet and shelving unit,
3No. 750mm wide base cabinets,
2No. 750mm wide overhead cabinets.
2No. open laminated shelves and
32mm thick laminated benchtop.

Internal Option 06

Provide 150mm plaster feature wall protrusion with a 500mm deep plastered bulkhead.

Internal Option 07

Provide home office in lieu of kids area including in-built cabinetry:
2No. 450mm floating drawers,
2No. 400mm laminated linen units,
600mm deep laminate benchtop and
2No. 60mm x 300mm deep overhead shelves.
Relocate office window to suit.

Garage Option 01

Provide extension to Garage to create Storage area.
Increases area by 4.54m².
Increases width by 840mm.

Garage Option 02

Provide extension to Garage to create Storage area including:
1No. 2057mm x 610mm aluminium awning feature window.
Increases area by 7.78m².
Increases width by 1440mm.

Garage Option 03

Provide triple car garage including
1No. 2290mm x 2410mm garage door as per colour selection.
Increases area by 24.54m².
Increases width by 3600mm.

