

Facades available:	
Ashley, Atherton, Camden, Holton	
Kelsey	
Overall home width	13.43m
Overall home length	23.39m

Residence	205.5m ²	22.1sq
Garage	36.3m ²	3.9sq
Porch	3.9m ²	0.4sq
Alfresco	15.5m ²	1.7sq
Total	261.2m²	28.1sq

FLOORPLAN OPTIONS

We personalise our floorplans. Talk to us about our huge range of ready-to-go design options.

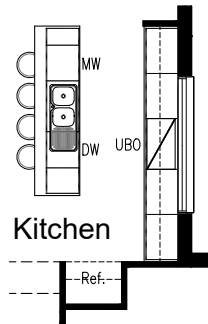
Listed details based on Ashley facade floorplan (illustrated)

*Copyright conditions. All photos and illustrations are representative only. Floor plans and specifications may be varied by Burbank without notice, the dimensions are diagrammatic only and a Building Contract with final drawings will display correct dimensions and detail. All designs are the property of Burbank and must not be used, reproduced, copied or varied, wholly or in part without written permission from an authorised Burbank representative. Copyright Burbank Australia (NSW) Pty Ltd. ABN 88 610 822 770. NSW BL 295627C ACT BL 2016566.

Call 13 BURBANK
Visit burbank.com.au

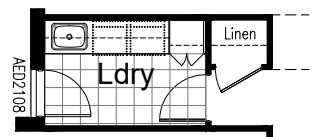
OPTION K1

Provide Kitchen upgrade option with additional microwave provision and 900mm open shelf above the refrigerator.
Kitchen island now includes 450mm drawer unit, dishwasher provision, microwave provision with pot drawer, 1No. 900mm base cupboard, 1No. 300mm base cupboard with additional bench top to suit.
Kitchen fit out to external wall (elevation D) to remain standard.



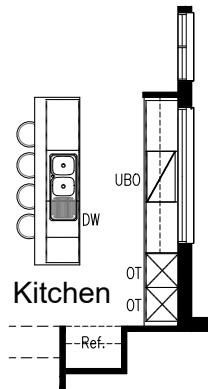
OPTION LD-2

Provide Laundry upgrade option including laminate base cupboards and stainless steel inset trough including 1No. 800mm base cupboard, 1No. 800mm overhead cupboard, 1No. 900mm overhead cupboard, 1No. 450mm overhead cupboard, 1No. 600mm full height laminate cupboard with 4No. 450mm shelves, additional bench top and tiled splashback to suit.
Option also provides AED2108 external access door in lieu of ASD2115 sliding door.
Note: bench height is raised to 990mm to accommodate washing machine and dryer beneath.



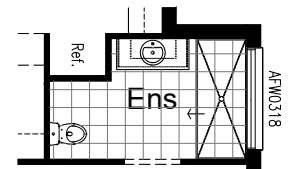
OPTION K2

Provide Kitchen upgrade option including 2No. 600mm oven towers, 900mm retractable rangehood, 900mm cooktop, 450mm drawer unit, dishwasher provision, 5No. 900mm base cupboards, 2No. 900mm overhead cupboards, 1No. 900mm open shelf above refrigerator.
Option moves AFW0524 fixed window to suit and increases family by 120mm with ASW2012 sliding window moving 120mm also.



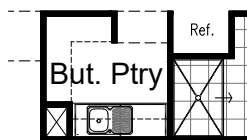
OPTION ENS-1

Provide Ensuite upgrade option with rearranged layout including 2140x900mm tiled shower base and relocated WC.
Option also provides AFW0318 fixed window above shower in lieu of standard.



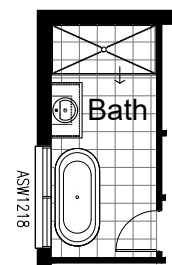
OPTION K3

Provide Butler's Pantry option in lieu of WIP including 2No. 800mm base cupboards, 2No. 800mm overhead cupboards, single bowl sink with additional bench top and tiled splashback to suit.



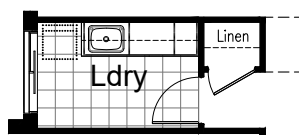
OPTION IP1-7

Provide Bath upgrade option with rearranged layout including 1870x900mm tiled shower base, freestanding bath, 982mm vanity with single basin. Option also provides ASW1218 sliding window above new bath location in lieu of standard, removes Linen closet from Passage.



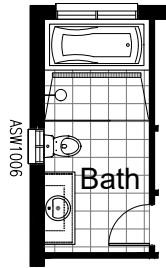
OPTION LD-1

Provide Laundry upgrade option including laminate base cupboards and stainless steel inset trough including 2No. 800mm base cupboard, 1No. 400mm base cupboard, 2No. 800mm overhead cupboards, 1No. 400mm overhead cupboard, additional bench top and tiled splashback to suit.



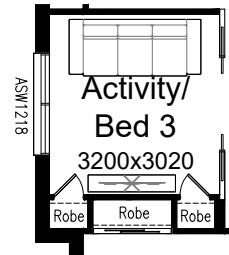
OPTION IP1-8

Provide Bath upgrade option with rearranged layout including additional WC, 1282mm vanity with single basin, 1870x900mm tiled shower adjacent to tiled bath hob with full width drainage grate and 1170mm glass panel shower screen. Option also provides additional ASW1006 sliding window over WC.



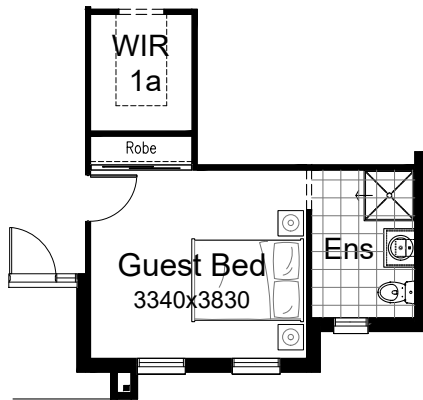
OPTION IP1-3

Provide Activity/Bed 3 option in lieu of standard Bed 3 including 2No. 820mm bi-parting cavity sliding doors, and rearranging the Robe layout to provide a central blank wall for TV space as shown. Provide 2No. 520mm hinged doors in lieu of sliding Robe doors.



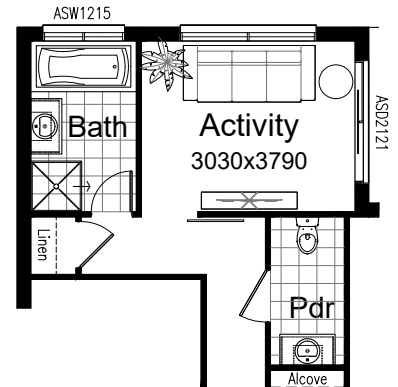
OPTION IP1-1

Provide Guest Bed option in lieu of Living and WIR 1b. Option includes 820mm hinged door in lieu of bulkhead opening and built-in Robe with sliding doors. Ensuite includes 900x900mm tiled shower base, 682mm vanity with single basin and WC. The front articulation pushes across 480mm and down 720mm to accommodate the Ensuite - all facades will need to alter to suit. Alcove to Entry passage is removed to allow for return shelving to WIR 1a.



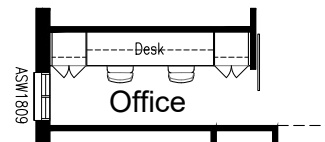
OPTION IP1-4

Provide Activity option in lieu of standard Bed 4, removing 820mm hinged door and built-in Robe and providing 1000mm wide barn door opening and ASD2121 sliding door access to Alfresco.



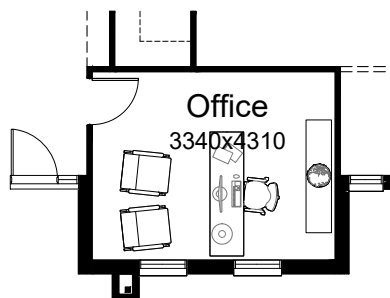
OPTION IP1-5

Provide built-in joinery option to Home Office including 2No. 600mm full height laminate cupboard with 4No. 450mm shelves and 32mm built-in laminated bench top with 2No. 300mm deep, 60mm thick open shelves over. Also provides 1000mm barn door in lieu of bulkhead opening.



OPTION IP1-2

Provide Office option in lieu of Living including 820mm hinged door in lieu of bulkhead opening.



OPTION IP1-6

Provide Study Nook option in lieu of Alcove with built-in joinery including 32mm built-in laminated bench top and 2No. 300mm deep, 60mm thick open shelves over. Bulkhead opening to passage moves to accommodate.

