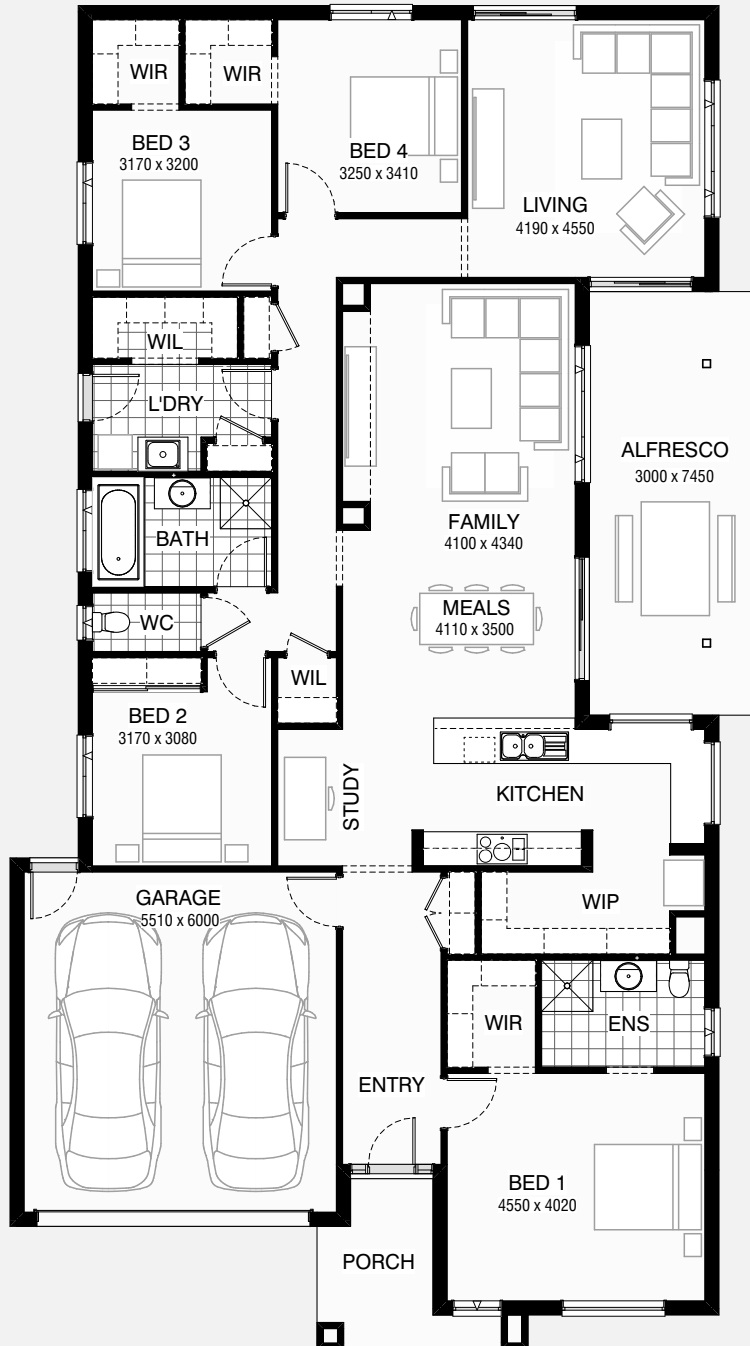


# MAPLE 29

4 2 2

Total squares 28.9sq



**B**  
SERIES

Minimum Lot Width  
**14.0m**

Minimum Lot Length  
**32.0m**

**Design Dimensions**  
13,190mm(W) x 23,630mm(L),

**Facade Choices**  
Brentwood, Glendale, Inglewood,  
Malibu, Northridge, Pasadena, Santa Monica.  
Details based on Inglewood façade floorplan (illustrated)

**DESIGN DIMENSIONS**

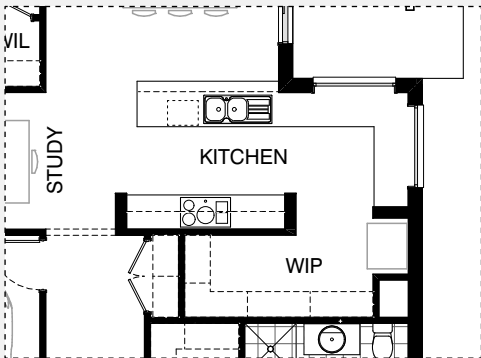
Residence	203.3m <sup>2</sup>	21.9sq
Garage	36.6m <sup>2</sup>	3.9sq
Porch	6.3m <sup>2</sup>	0.7sq
Alfresco	22.4m <sup>2</sup>	2.4sq
<b>Total</b>	<b>268.3m<sup>2</sup></b>	<b>28.9sq</b>



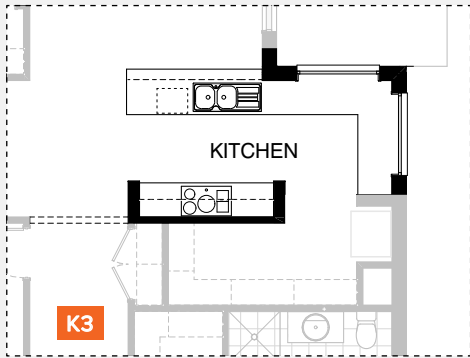
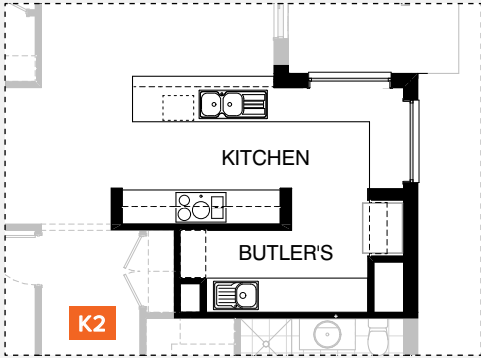
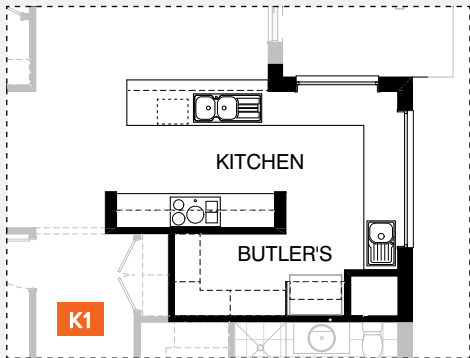
\*Copyright conditions. All photos and illustrations are representative only. Floor plans and specifications may be varied by Burbank without notice, the dimensions are diagrammatic only and a Building Contract with final drawings will display correct dimensions and detail. All designs are the property of Burbank and must not be used, reproduced, copied or varied, wholly or in part without written permission from an authorised Burbank representative. Copyright Burbank Australia Pty Ltd. ABN 91 007 099 872. Builders Registration Number CDB-U-52603.



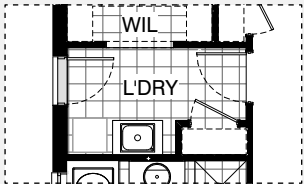
KITCHEN OPTIONS



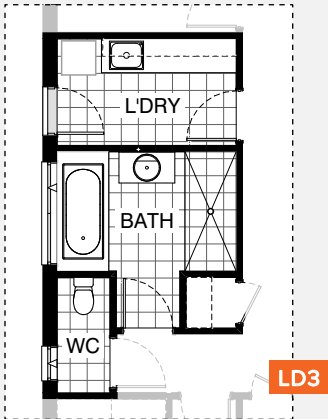
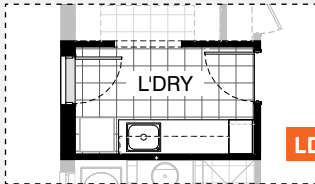
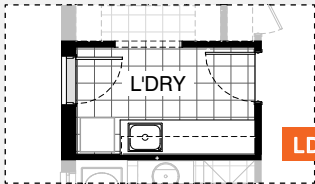
Master Kitchen Design



LAUNDRY OPTIONS

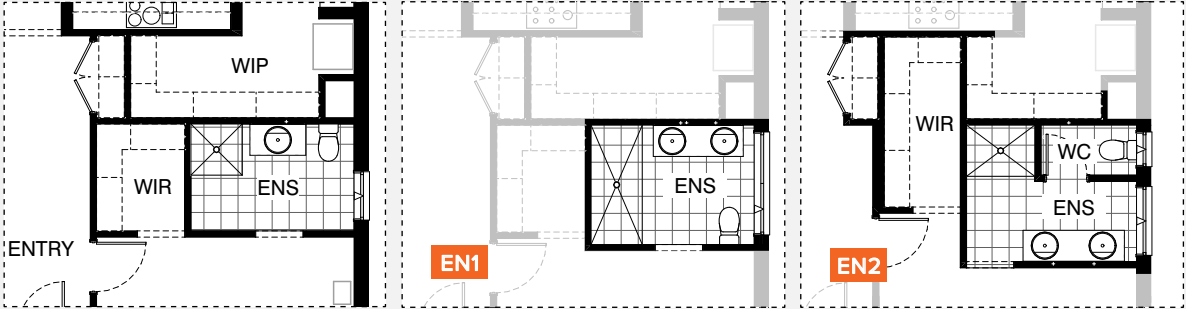


Master Laundry Design

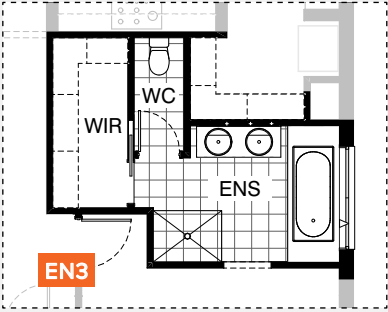




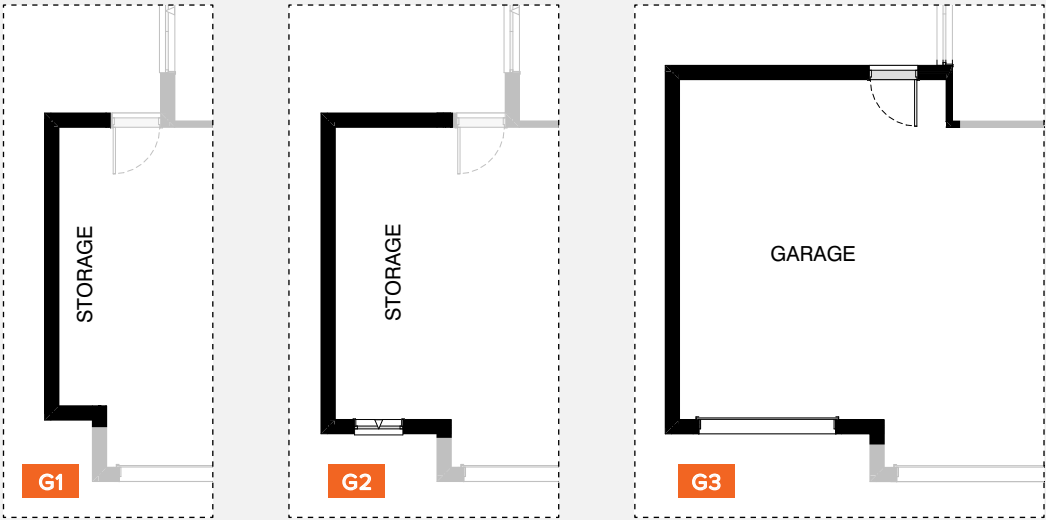
ENSUITE OPTIONS



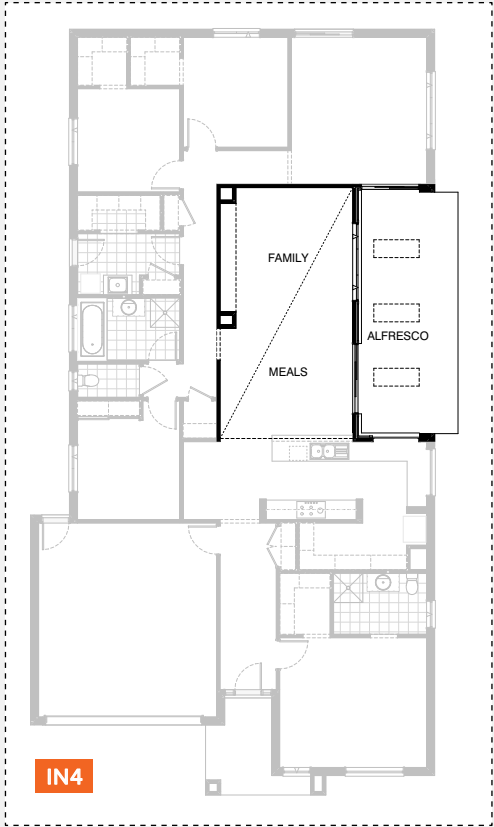
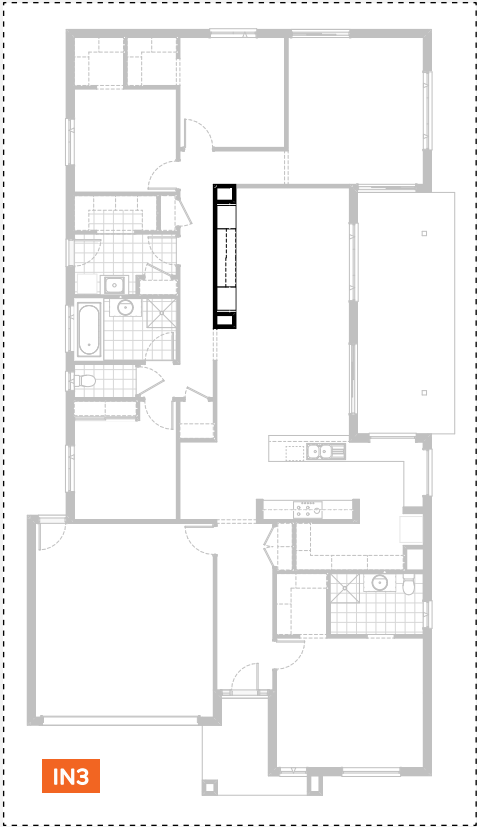
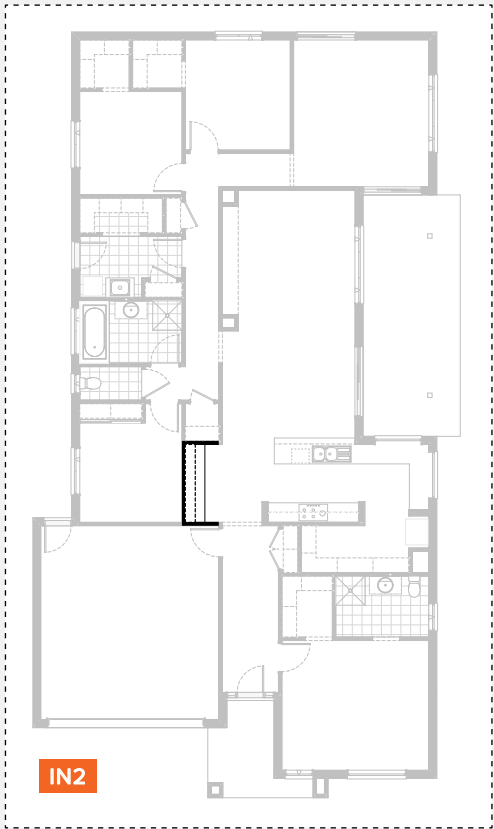
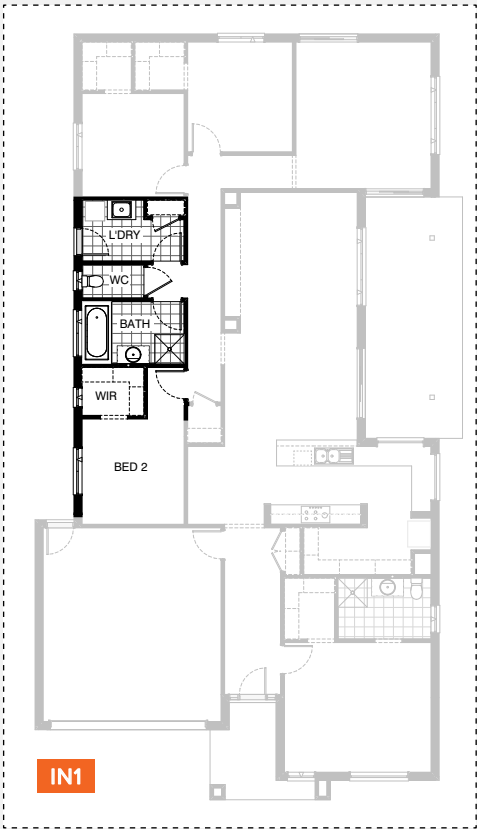
Master Ensuite Design



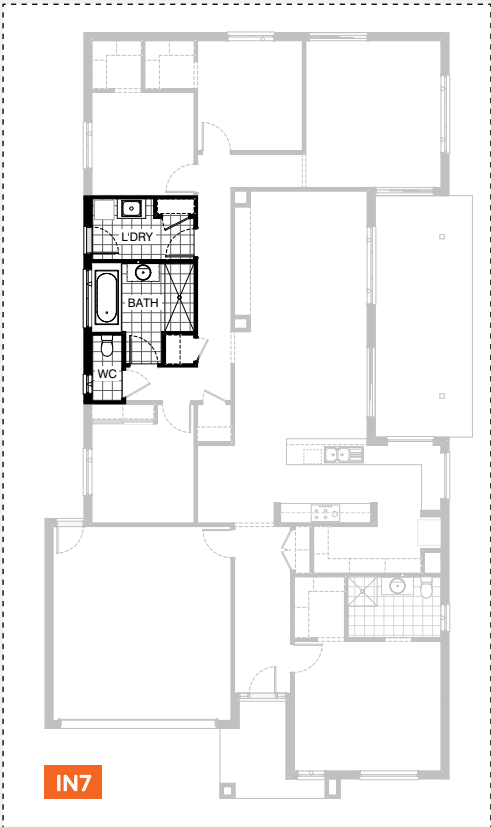
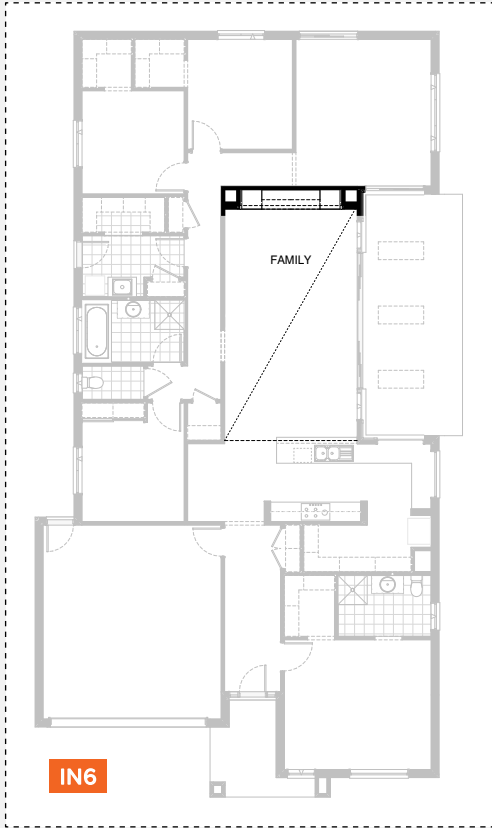
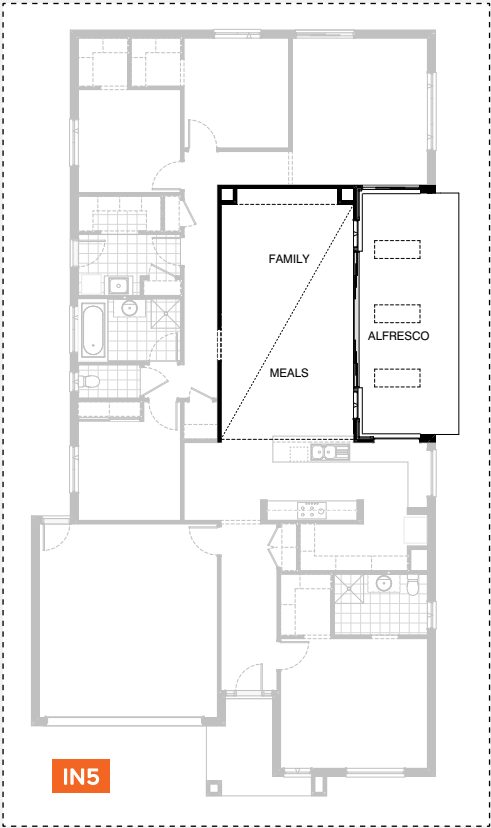
GARAGE OPTIONS



INTERNAL OPTIONS



INTERNAL OPTIONS



# MAPLE 29

## OPTION DESCRIPTIONS

### Kitchen Option 01

Provide Kitchen upgrade with Butler's Pantry.  
Option includes relocating Ref space,  
900mm retractable rangehood,  
900mm cooktop and under bench oven,  
450mm drawer unit,  
1No. dishwasher provision,  
1No. microwave provision with pot drawer,  
5No. 900mm base cabinets,  
2No. 800mm base cabinets,  
1No. 600mm blind carcass base cabinet,  
2No. 900mm overhead cabinets,  
open shelf above Ref. space, additional single bowl sink,  
additional tiled splashback and benchtop to suit.  
Provide 1200mm x 2410mm aluminium fixed window with  
no bottom reveal in lieu of standard.  
Note: not available in conjunction with Ensuite02 and Ensuite03

### Kitchen Option 02

Provide Kitchen upgrade with Butler's Pantry.  
Option includes 900mm retractable rangehood,  
900mm cooktop and under bench oven,  
450mm drawer unit,  
1No. dishwasher provision,  
1No. microwave provision with pot drawer,  
7No. 900mm base cabinets,  
1No. 800mm base cabinet,  
1No. 600mm blind carcass base cabinet,  
1No. 350mm base cabinet,  
2No. 900mm overhead cabinets,  
open shelf above Ref. space,  
additional single bowl sink,  
additional tiled splashback and benchtop to suit.  
Provide 1No. 1200mm x 1450mm aluminium fixed window  
with no bottom reveal in lieu of standard.  
Note: not available in conjunction with Ensuite02 and Ensuite03

### Kitchen Option 03

Provide alternative Kitchen proportions.  
Option includes 900mm retractable rangehood,  
900mm cooktop and under bench oven,  
450mm drawer unit,  
1No. dishwasher provision,  
1No. microwave provision with pot drawer,  
1No. 900mm base cabinet,  
2No. 800mm base cabinets,  
2No. 700mm base cabinets,  
1No. 600mm blind carcass base cabinet,  
1No. 450mm base cabinet,  
2No. 700mm overhead cabinets,  
reduced tiled splashback and benchtop to suit.

### Laundry Option 01

Provide upgrade Laundry option including  
laminated base cabinets and inset trough,  
2No. 800mm base cabinets,  
1No. 700mm base cabinet,  
2No. 800mm overhead cabinets,  
1No. 700mm overhead cabinet,  
additional tiled splashback and benchtop to suit.  
Delete store in Laundry.  
Note: not available in conjunction with Internal07

### Laundry Option 02

Provide upgrade Laundry option including  
laminated base cabinets and inset trough,  
2No. 800mm base cabinets,  
1No. 300mm base cabinet,  
2No. 800mm overhead cabinets,  
1No. 300mm overhead cabinet,  
1No. 400mm laminated broom unit,

additional tiled splashback and benchtop to suit.  
Delete Store in Laundry.  
Note: not available in conjunction with Internal07

### Laundry Option 03

Provide upgrade Laundry option including  
laminated base cabinets and inset trough,  
2No. 800mm base cabinets,  
1No. 700mm base cabinet,  
2No. 800mm overhead cabinets,  
1No. 700mm overhead cabinet,  
additional tiled splashback and benchtop to suit.  
Delete Store in Laundry & option also changes the layout of WC and  
removes Walk-in Linen to Laundry and standard Linen to Passage and  
adds small Walk-in Linen to Passage near Bathroom.  
Note: Only available with Internal07

### Ensuite Option 01

Provide upgrade Ensuite option with rearranged layout including  
2100mm x 900mm tiled shower base,  
1582mm vanity with double bowl.  
Provide 1029mm x 1810 aluminium awning window  
in lieu of standard.  
Option takes 220mm of length from Bed 1.

### Ensuite Option 02

Provide upgrade Ensuite option with rearranged layout including  
1200mm x 900mm tiled shower base,  
1782mm vanity with double bowl,  
enclosed WC and enlarged Walk-in Robe.  
Provide 1029mm x 610 aluminium awning window to enclosed WC and  
1200mm x 1210mm aluminium awning window in lieu of standard.  
Option takes 520mm from length of Bed 1 and  
940mm of width from Walk-in Pantry.  
Note: not available in conjunction with Kitchen01 and Kitchen02

### Ensuite Option 03

Provide upgrade Ensuite option with rearranged layout including  
1200mm x 900mm tiled shower base,  
1482mm vanity with double bowl,  
1675mm bath with tiled hob, enclosed WC and enlarged Walk-in Robe.  
Provide 1200mm x 1810mm aluminium awning window in lieu of standard.  
Option takes 510mm from length of Bed 1 and 1310mm of width from  
Walk-in Pantry and also removed Coats cupboard from Entry passage.  
Note: not available in conjunction with option Kitchen01 and Kitchen02

### Internal Option 01

Provide floor plan option including Walk-in Robe to Bed 2.  
Option removes Walk-in Linen to Laundry and standard Linen to Passage  
and moves WC in between Bathroom and Laundry.  
Provide 1800mm x 610mm aluminium awning window to Bed 2 WIR.  
Option adds 190mm of length to Bed 2.  
Note: not available in conjunction with Internal07

### Internal Option 02

Provide floor plan option with built-in desk and cabinetry to  
Study Nook including 600mm deep 32mm laminate benchtop,  
2No. 600mm wide single drawer units,  
2No. full-width 300mm deep open shelves above.

### Internal Option 03

Provide floor plan option with built-in Entertainment unit to  
Family Room Alcove including:  
600mm deep 32mm laminate benchtop with  
3No. 600mm drawers beneath,  
2No. 700mm wide full-height cabinets,  
2No. 900mm wide overhead cabinets with lift-up doors.

### Internal Option 04

Provide floor plan option with raised ceiling to  
Meals / Family room and raked ceiling to Alfresco with



# MAPLE 29

## OPTION DESCRIPTIONS

1No. 514mm x 2170mm aluminium fixed highlight window,  
1No. 514mm x 2410mm aluminium fixed highlight window.  
Option also removes 2No. timber posts to Alfresco with full-span steel beam, replaces brickwork to Alfresco with J.H. 'Linea' weatherboard cladding and adds 3No. fixed skylights to roof over.

### Internal Option 05

Provide floor plan option with rearranged Alcove to Family room and raised ceiling to Meals / Family room and raked ceiling to Alfresco with 2No. 2057mm x 850mm aluminium awning feature windows and 1No. 2095mm x 4217mm aluminium stacker sliding door in lieu of standard, Provide 3No. 514mm x 1930mm aluminium fixed highlight windows.  
Option also removes 2No. timber posts to Alfresco with full-span steel beam, replaces brickwork to Alfresco with J.H. 'Linea' weatherboard cladding and adds 3No. fixed skylights to roof over.

### Internal Option 06

Provide floor plan option with built-in Entertainment unit to rearranged Family Room Alcove including:  
600mm deep 32mm laminate benchtop with  
3No. 600mm drawers beneath,  
2No. 600mm wide full-height cabinets,  
2No. 900mm wide overhead cabinets with lift-up doors.  
Note: only available in conjunction with Internal05

### Internal Option 07

Provide upgrade Bathroom option including:  
2100mm x 900mm tiled shower base,  
982mm vanity with single bowl,  
1675mm bath with tiled hob.  
Option also changes the layout of WC and removes Walk-in Linen to Laundry and standard Linen to Passage and adds small Walk-in Linen to Passage near Bathroom.  
Provide 1200mm x 1810mm aluminium awning window to Bathroom in lieu of standard.  
Note: not available in conjunction with Internal01

### Garage Option 01

Provide extension to Garage to create additional Storage area.  
Increases area by 4.53m<sup>2</sup>.  
Increases width by 840mm.

### Garage option 02

Provide extension to Garage to create Storage area including additional 2057mm x 850mm aluminium awning feature window.  
Increases area by 11.48m<sup>2</sup>.  
Increases width by 2040mm.

### Garage option 03

Provide triple car Garage including additional 2290mm x 2410mm Garage door as per colour selection.  
Increases area by 24.26m<sup>2</sup>.  
Increases width by 3600mm.

