



FLOORPLAN OPTIONS

We personalise our floorplans. Talk to us about our huge range of ready-to-go design options.

Facades available:

Barrine, Mackay, Corella

Overall home width 8.75m

Overall home length 20.87m

| | | |
|--------------|---------------------------|---------------|
| Residence | 205.2m ² | 22.1sq |
| Garage | 37.2m ² | 4sq |
| Porch | 4.5m ² | 0.5sq |
| Alfresco | 9m ² | 1sq |
| Total | 255.9m² | 27.5sq |

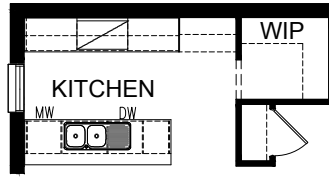
Listed details based on Barrine facade floorplan (illustrated)

*Copyright conditions. All photos and illustrations are representative only. Floor plans and specifications may be varied by Burbank without notice, the dimensions are diagrammatic only and a Building Contract with final drawings will display correct dimensions and detail. All designs are the property of Burbank and must not be used, reproduced, copied or varied, wholly or in part without written permission from an authorised Burbank representative. Copyright Burbank Australia (NSW) Pty Ltd. ABN 88 610 822 770. NSW BL 295627C ACT BL 2016566.

Call 13 BURBANK
Visit burbank.com.au

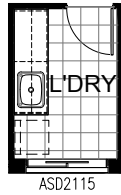
OPTION K1

Provide Kitchen option with additional 1no. MW provision with pot drawer below, 1no. laminated open shelf to refrigerator space in lieu of standard.



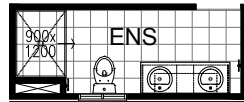
OPTION LD1

Provide Laundry option with additional inset laminated trough, 2no. 900mm base cupboards, 2no. 900mm overhead cupboards and additional tiled splash back and bench top to suit.



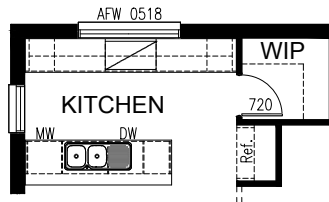
OPTION ENS1

Provide Ensuite option with 1no. 900mm x 1200mm tiled shower base in lieu of standard 1no. 900mm x 900mm tiled shower base and additional bowl to 1582mm vanity unit.



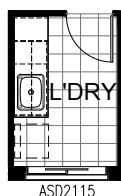
OPTION K2

Provide Kitchen upgrade by deleting Broom cupboard and relocating Ref. space. Provide 1no. MW provision with pot drawer below, 1no. laminated open shelf to refrigerator space, 2no. 900mm overhead cupboards, 2no. 450mm overhead cupboards, 2no. 900mm base cupboards, 2no. 450mm base cupboards and additional 1no. 720mm flush panel hinged door in lieu of standard. Provide AFW 0518 to Kitchen. (This option is not applicable with option IP2)



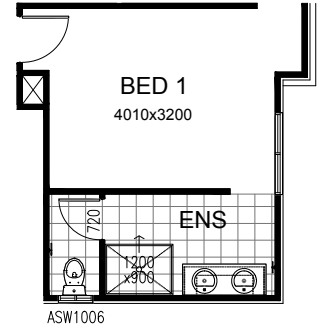
OPTION LD2

Provide Laundry with additional inset laminated trough, 1no. 400mm broom cupboard, 1no. 400 base cupboard, 1no. 900mm base cupboard, 1no. 400mm overhead cupboard 1no. 900mm overhead cupboard and additional tiled splash back and bench top to suit.



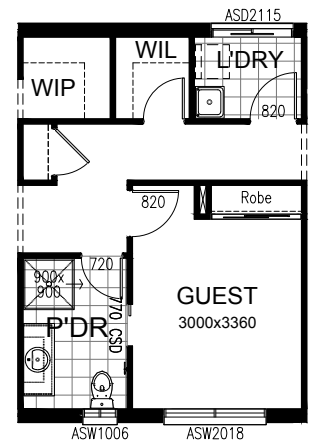
OPTION ENS2

Provide Ensuite option by reducing part of Bed 1 and increasing Ensuite length by 300mm. Provide additional bowl to 1482mm vanity unit, 1no. 1200mm x 900mm tiled shower base in lieu of standard 1no. 900mm x 900mm tiled shower base, Provide 1027mm by 610mm aluminium sliding window to WC and 1no. 720mm flush panel hinged door.



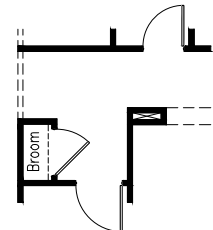
OPTION IP1

Provide Guest Bedroom Option in lieu of standard Theatre. Provide additional 1no. 820mm flush panel hinged door, 2no. sliding doors to Robe and 1no. 2057mm x 1810mm aluminium sliding window to Guest Bedroom. Relocate Laundry and Powder. Provide additional 1no. 770mm flush panel cavity sliding door, 1no. 900mm x 900mm tiled in shower base and 1no. 1282mm wide vanity unit to Powder.



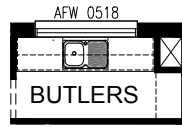
OPTION IP2

Relocate Broom cupboard to Laundry B wall. (This option is not applicable with option K2)



OPTION IP3

Provide Butlers Pantry by extending WIP and deleting WIL.
Provide additional single bowl sink with drainer, 3no. 800mm overhead cupboard, 3no. 800mm base cupboard, additional tiled splash back and bench top to suit.
Provide AFW 0518 to Butlers.



OPTION IP4

Provide Butlers Pantry by extending WIP and deleting WIL.
1no. 900mm overhead cupboard, 1no. 900mm base cupboard, additional tiled splash back and bench top to suit.



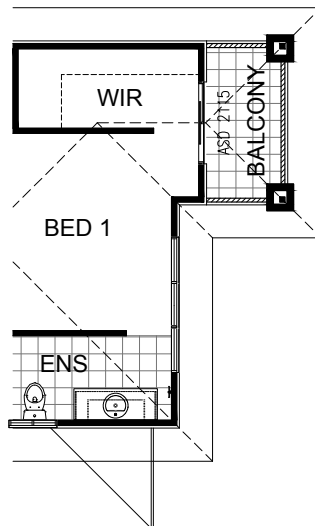
OPTION EP1

Provide Grand Alfresco and Meals option by increasing length by 1080mm.
Increases area by 7.64m².
Provide 1No. 2110mm x 2690mm aluminium sliding door to Meals.



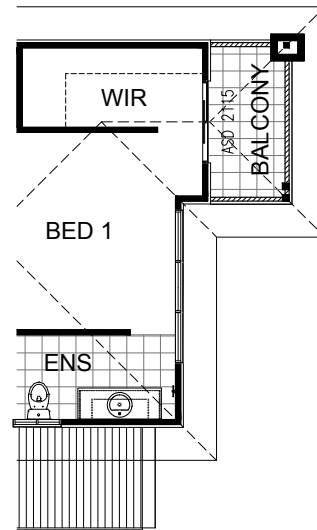
OPTION EP2 - BARRINE FACADE

Provide Balcony Option.
Provide 2110mm x 1450mm Aluminium Sliding Door, ceramic tiled floor and timber framed wall balustrade with painted 'Scyon stria' weatherboard cladding.
Provide 2no. 90mm x 90mm painted posts & extend roof line over balcony.



OPTION EP3 - MACKAY FACADE

Provide Balcony Option.
Provide 2110mm x 1450mm Aluminium Sliding Door, ceramic tiled floor and timber framed wall balustrade with painted finish cement sheet 'Axon' cladding.
Provide 1no. 90mm x 90mm & 2no. 115mm x 115mm painted timber posts & extend roof line over balcony.



OPTION EP4 - CORELLA FACADE

Provide Balcony Option.
Provide 2110mm x 1450mm Aluminium Sliding Door, ceramic tiled floor and timber framed wall balustrade with rendered fc 'harditex'.
Provide 2no. 90mm x 90mm painted posts & extend roof line over balcony.

