

**FLOORPLAN OPTIONS**

We personalise our floorplans. Talk to us about our huge range of ready-to-go design options.

Listed details based on Traditional facade floorplan (illustrated)

**Facades available:**

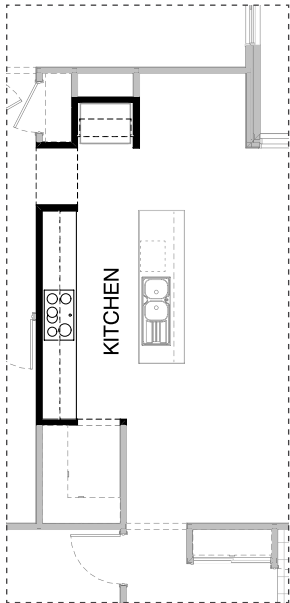
Coastal, Delta, Kingston, Nouveau Salisbury, Traditional, York

**Overall home width** 11,270mm

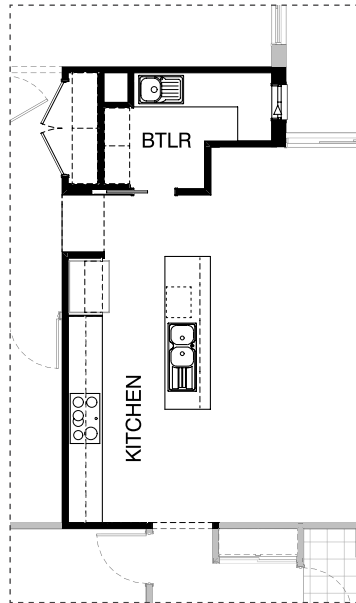
**Overall home length** 22,910mm

Residence	167.3m <sup>2</sup>	18.0sq
Garage	37.4m <sup>2</sup>	4.0sq
Porch	3.2m <sup>2</sup>	0.3sq
Alfresco	12.4m <sup>2</sup>	1.3sq
<b>Total</b>	<b>220.3m<sup>2</sup></b>	<b>23.7sq</b>

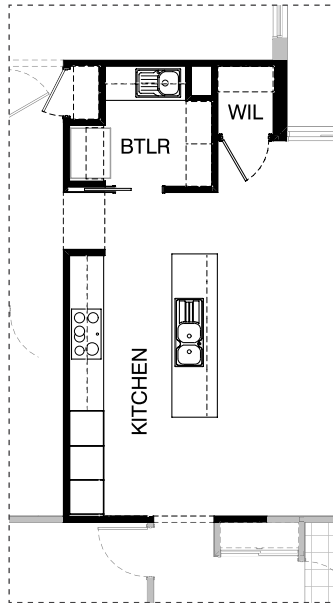
\*Copyright conditions. All photos and illustrations are representative only. Floor plans and specifications may be varied by Burbank without notice, the dimensions are diagrammatic only and a Building Contract with final drawings will display correct dimensions and detail. All designs are the property of Burbank and must not be used, reproduced, copied or varied, wholly or in part without written permission from an authorised Burbank representative. Copyright Burbank Australia (QLD) Pty Ltd. ABN 77 103 014 615. QBCC 1046544.



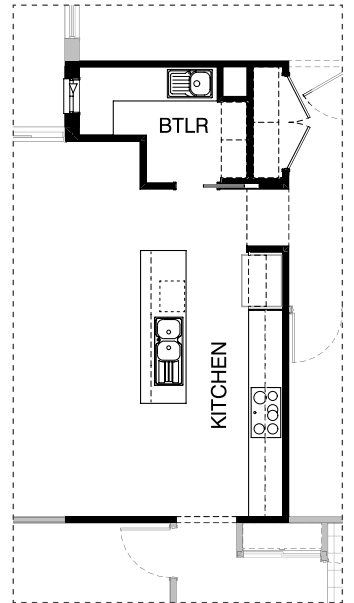
**K01**



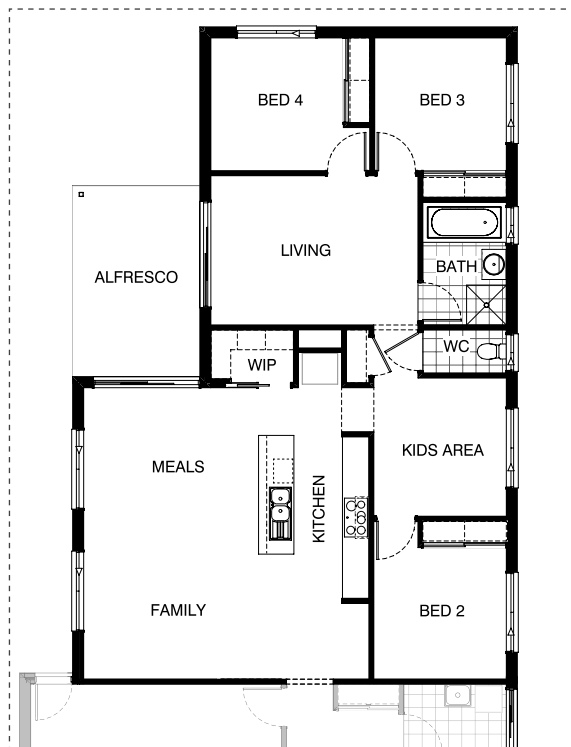
**K02**



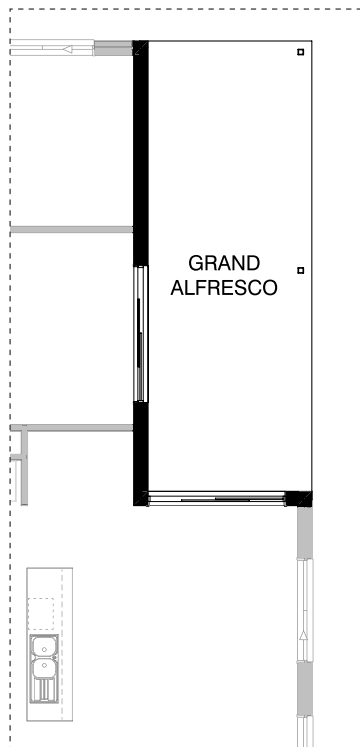
**K03**



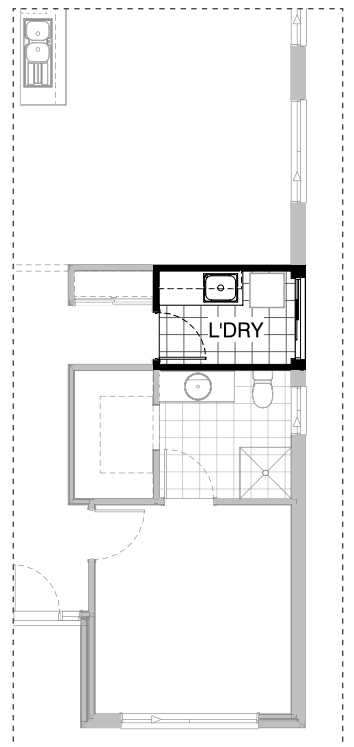
**K04**



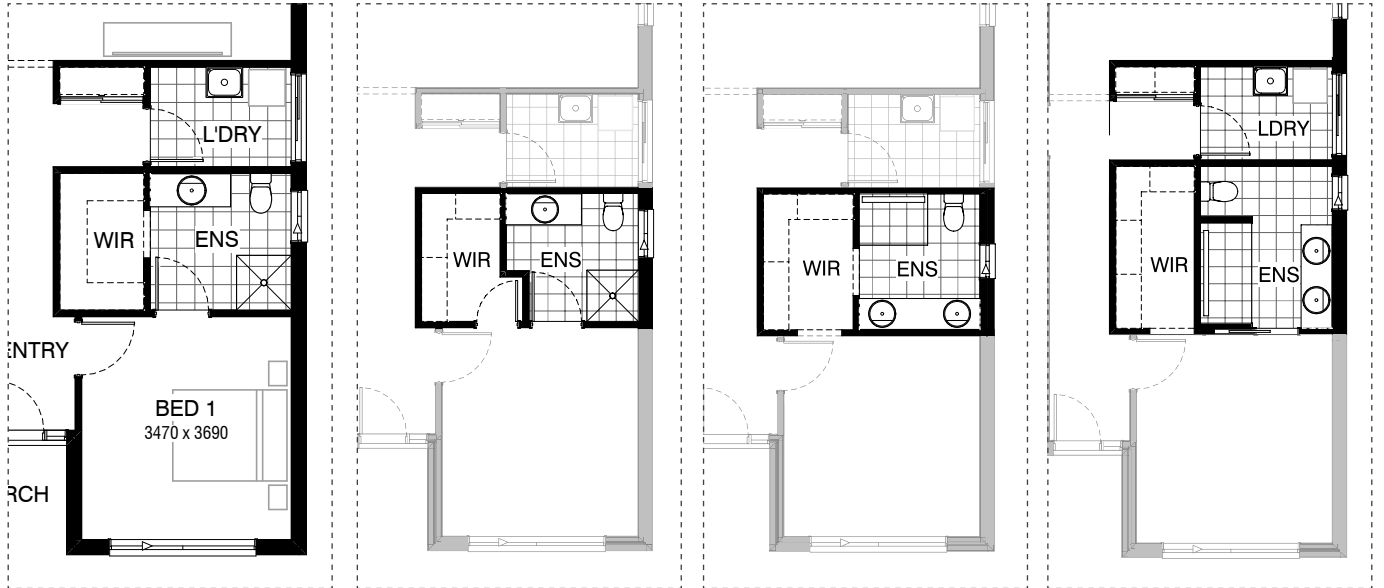
**EX01**



**EX02**



**L01**

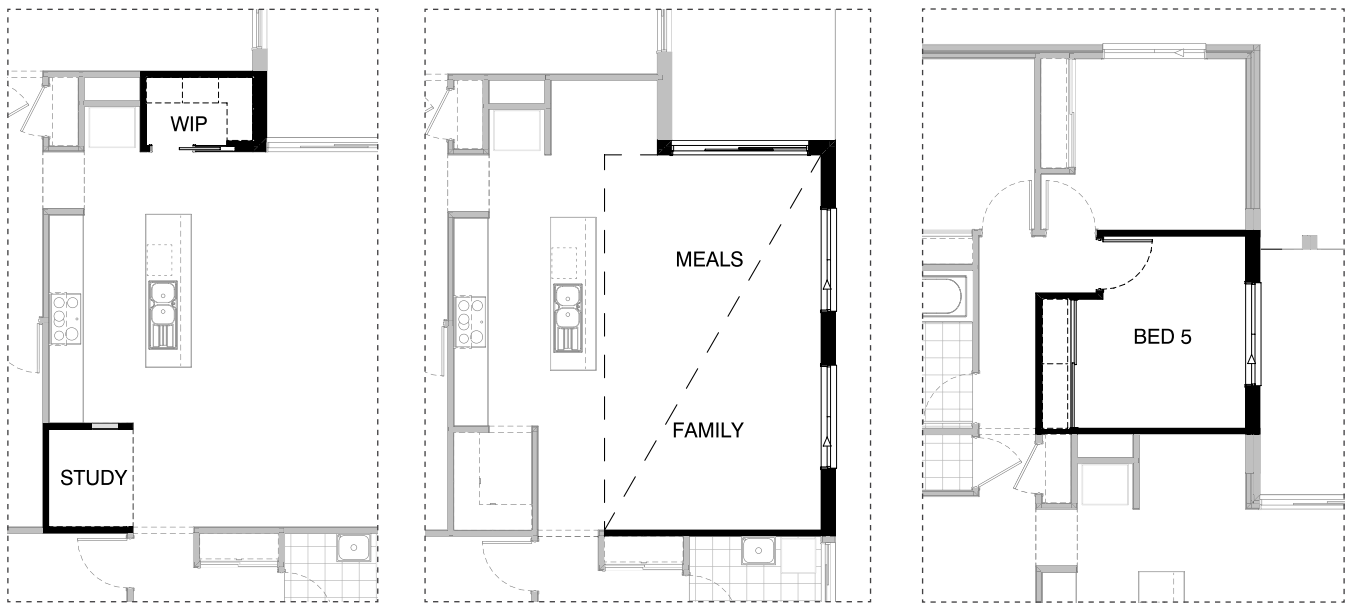


Master Ensuite

**EN01**

**EN02**

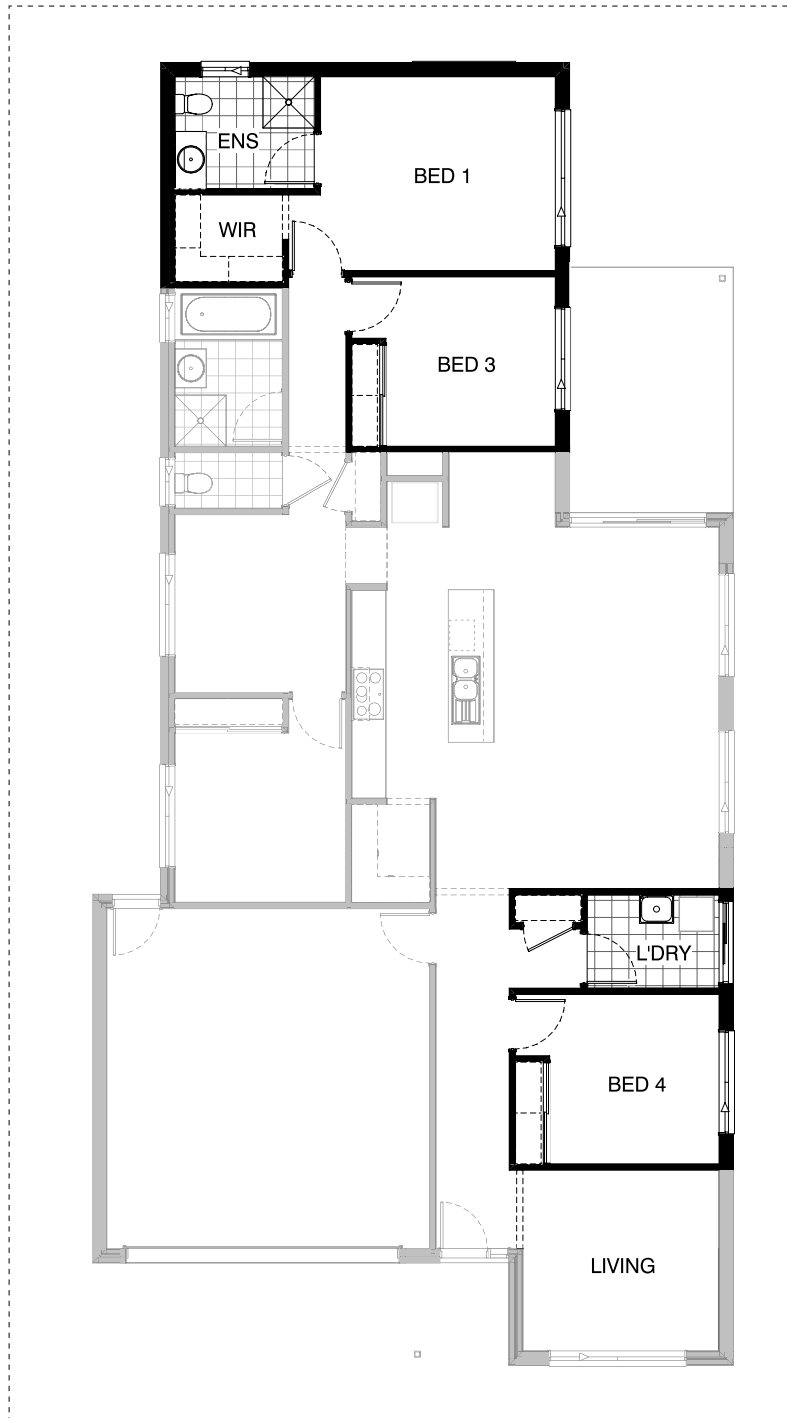
**EN03**



**IN01**

**IN02**

**IN03**



**IN04**

**OPTION DESCRIPTIONS****K01 - Kitchen Option 01**

Provide Kitchen upgrade option, including: 2No. 900mm overhead Cupboards, 2No. 450mm overhead cupboards, 1No. 900mm open shelf over Ref space.

Note: Option not available with External01 & Kitchen02 or Kitchen03

**K02 - Kitchen Option 02**

Provide Butler's Pantry option which moves pantry to other side of Kitchen. New Kitchen includes: 900mm retractable rangehood, 900mm electric cooktop, 900mm under bench oven, 450mm drawer unit, dishwasher provision, microwave provision with pot drawer, 3No. 900mm base cupboards, 2No. 450mm base cupboards, single bowl sink, 4No. 450mm overhead cupboards, 2No. 450mm overhead cupboards, 1No. 900mm open shelf over Ref space. Butler's Pantry includes: additional laminated benchtop, 1No. 900mm base cupboard, 1No. 900mm blind base cupboard with 450mm door, 2No. 450mm base cupboards, single bowl sink, 4No. 450mm shelves, 720mm cavity sliding door, 1No. 1027mm x 610mm Aluminium sliding window to benchtop, additional tiled splashback to suit. Extend Linen to Passage with 2No. 820mm hinged doors.

Note: Option not available with External01 & Kitchen01 or Kitchen03

**K03 - Kitchen Option 03**

Provide Butler's Pantry option which moves pantry to other side of Kitchen. New Kitchen includes: 900mm retractable rangehood, 900mm electric cooktop, 900mm under bench oven, 450mm drawer unit, dishwasher provision, 3No. 900mm base cupboards, 1No. 800mm base cupboard, 2No. 900mm overhead cupboards, 2No. 600mm laminate oven towers with microwave provisions, 1No. 600mm laminate full height Pantry cupboard. Butler's Pantry includes: additional laminated benchtop, 1No. 900mm base cupboard, 1No. 450mm base cupboard, 1No. 900mm overhead cupboard, 1No. 450mm overhead cupboard, 1No. 900mm open shelf over Ref space, single bowl sink, 4No. 450mm shelves, 720mm cavity sliding door, additional tiled splashback to suit.

Note: Option not available with External01 & Kitchen01 or Kitchen02

**K04 - Kitchen Option 04**

Provide Kitchen and Butlers Pantry upgrade including relocating Ref space, 1No. 900mm under bench oven with cooktop & retractable rangehood, 450mm drawer unit, dishwasher provision, 1No. MW provision with pot drawer, 4No. 900mm base cupboard, 4No. 450mm base cupboards 2No. 900mm overhead cupboards, 2No. 450mm overhead cupboards, 1No. 900mm Blind carcass, Provide 450mm shelves to Butlers Pantry as required. Add 720mm cavity sliding door to Butlers. Additional 32mm laminate benchtop and 1No. bowl sink with drainer and tiled splashback to suit in Butlers. Extend Linen to rear passage to suit. Add 1027mm x 610mm Aluminium sliding window to Butlers Pantry.

Note: Option can ONLY selected in conjunction with External01

**EX01 - External 01**

Provide mirrored rear section of the home with WIP and Study to swap locations, Provide 450mm shelves and 720mm cavity sliding door to new WIP as required.

Note: Option not available with Internal04

**EX02 - External 02**

Provide Grand Alfresco option with additional light point, 2No. 88mm x 88mm painted timber post and tiled roof above.

Note: Option adds 10.37m<sup>2</sup> to the overall house area.

**L01 - Laundry Option 01**

Provide Laundry upgrade with laminate cupboards and stainless steel inset trough, including: 2No. 700mm base cupboards, 2No. 700mm overhead cupboards, additional benchtop and tiled splashback to suit. Washing machine water taps concealed within cabinetry.

**EN01 - Ensuite Option 01**

Provide Ensuite option with additional 720mm hinged door access from Bed 1 directly to Walk-in Robe. Remove 1 run of 450mm shelving with hanging rail as shown.

Note: Option not available with Internal04

**EN02 - Ensuite Option 02**

Provide Ensuite upgrade option with rearranged layout, including: 2No. 850mm wide bulkhead openings in lieu of 1No. 870mm hinged door, 2082mm vanity with 2120mm wide wall-to-wall benchtop, 1200x900mm tiled shower base with grate drain, relocated toilet. Note: option decreases size of Bed 1 by 140mm to accommodate.

Note: Option not available with Internal04

**EN03 - Ensuite Option 03**

Provide Ensuite upgrade with alternate layout 900mm x 1800mm tiled shower base with grate drain. 1782mm vanity unit with double basins. Add 720mm cavity sliding door to Ensuite. Add 1800mm x 610mm Aluminium sliding window to Ensuite. Laundry sliding door and Family/Meals windows adjusted to suit. Option extends WIR and Ensuite by 600mm into Family/Meals area.

Note: Option not available with Internal04

**IN01 - Internal Option 01**

Provide option which swaps the location of WIP and Study as shown. Add 720mm cavity sliding door to WIP. 1200mm high x 450mm wide cut out opening to Study side wall.

Note: Option not available with External01 & Kitchen02 or Kitchen03

**IN02 - Internal Option 02**

Provide raked ceiling option to Meals and Family with bulkhead, square set cornice and standard ceiling height over Kitchen.

**IN03 - Internal Option 03**

Provide 5th Bedroom option in lieu of Living, 1No. built in Robe with Gyprock sliding doors and 450mm shelf. Additional 820mm hinged door. 1No. 1200mm x 1810mm Aluminium sliding window.

Note: Option not available with Internal04

**IN04 - Internal Option 04**

Provide floor plan option with Bed 1 to the rear of the home. 1No. 982mm wide vanity unit to Ensuite. 1No. 1200mm x 2410mm Aluminium sliding window to Bed 1. Option reduces length of Family/Meals by 240mm. Moves Living to Bed 4 to the front of the Home. Reduce Linen cupboard width by 230mm. Bed 3 moves into previous Living area.

Note: Option not available with External01