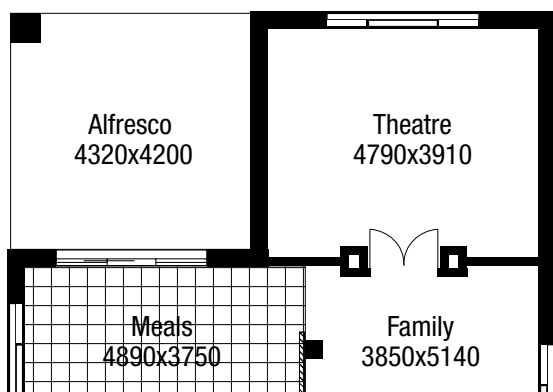


# Ashton 3200

Floor Plan Options

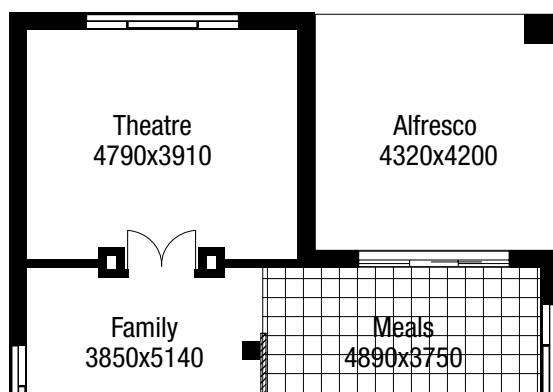
**Option A**

Added Alfresco and Theatre to rear of house.



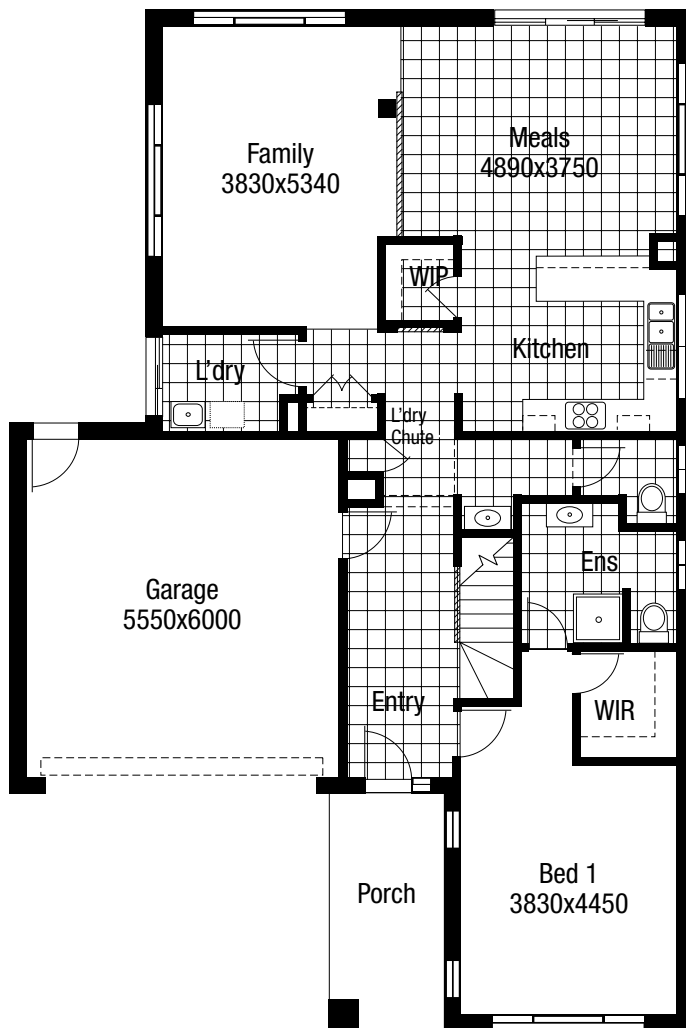
**Option A - (including Option B)**

Added Alfresco and Theatre to rear of house.



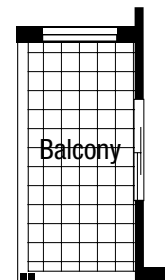
**Option B**

Mirrored rear of house.  
(ground floor only)



**Option**

Balcony included with Galea facade.



**13 BURBANK (13 2872)**  
[www.burbank.com.au](http://www.burbank.com.au)

**Burbank Business Park**  
Aberdeen Road Altona Vic 3018 Australia  
Burbank Australia Pty Ltd ABN 91 007 099 872  
T +613 9328 0333 F +613 9328 0222  
E [build@burbank.com.au](mailto:build@burbank.com.au)



\*Copyright conditions. All photos and illustrations are representative only. Floor plans and specifications may be varied by Burbank without notice, the dimensions are diagrammatic only and a Building Contract with final drawings will display correct dimensions and detail. All designs are the property of Burbank and must not be used, reproduced, copied or varied, wholly or in part without written permission from an authorised Burbank representative. Copyright Burbank Australia Pty Ltd. ABN 91 007 099 872. Builders Registration Number DB-U 3333. 13.10.09 NMP