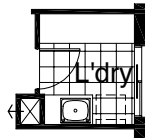


# Durham 2900

Floor Plan Options

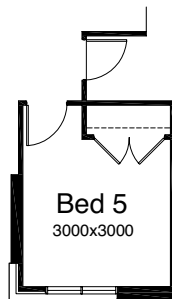
**Option A**

Provide pre-fabricated laminated laundry cabinet with insert trough including additional laminated base cupboards to elevation A wall.



**Option B**

Convert standard Study into Bed 5 including site built plaster lined robe with double flush panel hinged doors.



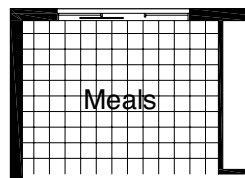
**Option C**

Extend standard Alfresco 2000mm including additional structural concrete floor, hip roof and additional brick pier. Increases area by 9.10m<sup>2</sup>. Increases length by 2000mm.



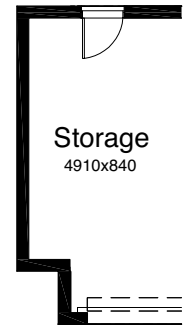
**Option D**

Extend Meals area by deleting standard Alfresco including additional floor tiling to suit.



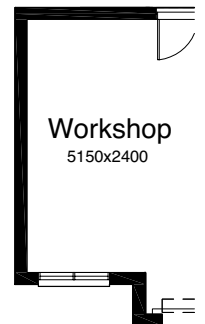
**Option E**

Provide extension to Garage to create additional Storage area. Increases area by 4.52m<sup>2</sup>. Increases width by 840mm.



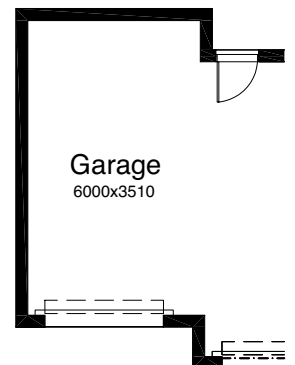
**Option F**

Provide extension to Garage to create Workshop area including additional window to suit. Increases area by 13.51m<sup>2</sup>. Increases width by 2400mm.



**Option G**

Provide triple car Garage including additional roller door to front. Increases area by 23.62m<sup>2</sup>. Increases width by 3600mm.



**13 BURBANK (13 2872)**  
burbank.com.au

**Burbank Business Park** Aberdeen Road Altona Vic 3018 Australia  
Burbank Australia Pty Ltd ABN 91 007 099 872  
T +613 9328 0333 F +613 9328 0222 E build@burbank.com.au



\*Copyright conditions. All photos and illustrations are representative only. Floor plans and specifications may be varied by Burbank without notice, the dimensions are diagrammatic only and a Building Contract with final drawings will display correct dimensions and detail. All designs are the property of Burbank and must not be used, reproduced, copied or varied, wholly or in part without written permission from an authorised Burbank representative. Copyright Burbank Australia Pty Ltd. ABN 91 007 099 872. Builders Registration Number DB-U 3333. MP - 24.06.10