

Plan your Escape

# Midori Walk Terraces

at Officer



Every plan needs a smart strategy. Midori Walk Terraces, part of the Aspect Estate, Officer is the perfect lifestyle choice for smart living, with all the details planned in advance. Beautifully positioned within walking distance of natural reserves and waterscapes, your new surroundings will offer you the ideal haven, with fitness stations, bike paths and community orchard, all within easy reach. Aspect Estate also offers easy access to shopping, transport and major road links to Dandenong and Pakenham.

## Your 'ownhome' house and land package includes:

- ▶ 6-Star Energy Efficiency rating
- ▶ Designer Facade
- ▶ A choice of internal colour schemes
- ▶ 5-Star rated gas ducted heating
- ▶ Stainless steel appliances
- ▶ Premium quality WELS rated internal taps and shower heads
- ▶ Solar hot water service
- ▶ Coloured concrete paving to path and porch
- ▶ Drought tolerant landscaping (by Developer)
- ▶ Rear yard fencing
- ▶ Remote access to garage with 2 handpieces
- ▶ Smart Meter (energy consumption monitoring)
- ▶ Fibre to the Home (by Developer)
- ▶ Internal and external light fittings with compact fluorescent globes



With house and land packages from

# \$302,900

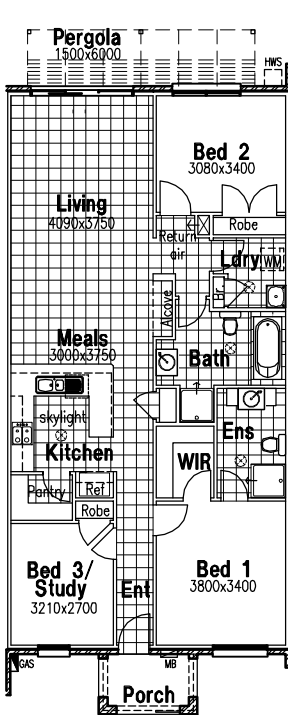
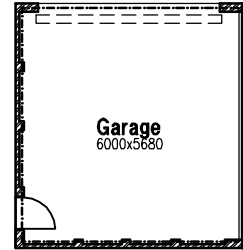
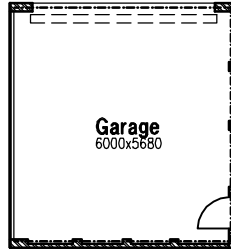
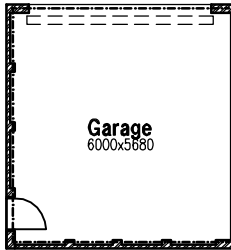
or even less with FHOG

## Bank on High Standards

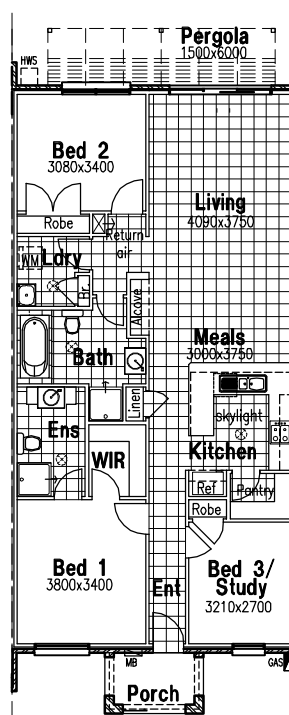
At Burbank, you can bank on high standards in contemporary style, comfort and quality. True to excellence in form and function, Midori Walk Terraces offer 6-Star Energy Efficiency with standard inclusions such as solar hot water and grey water connection, a designer kitchen with premium appliances and ultra modern finishes in every room.

## Leave the details with Burbank

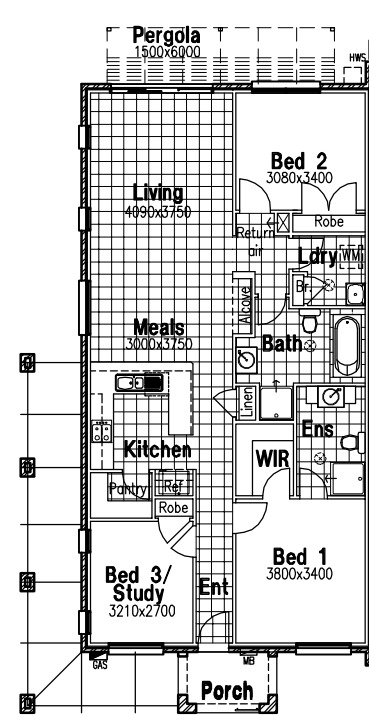
Buying a Midori Walk Terrace offer ownhome key inclusions like fixed price packages including up to \$29,000 of additional features. Site costs are fixed and details such as local authority requirements and developer approval, already taken care of. It's simple. It's smart.



**Lot: 73, 71, 58**  
Total area: 164.66sq.m



**Lot: 87, 72, 57**  
Total area: 164.66sq.m



**Lot: 88 (mirrored lot 59)**  
Total area: 185.42sq.m

