

Range View Terraces at Mitchell's Run, Doreen



Presenting a complete package to balance lifestyle with serenity, you'll be charmed by what's on offer at Range View Terraces, Mitchell's Run, Doreen.

Burbank's seamless and streamlined building experience starts here with turn-key packs to offer you exceptional value. Well thought out inclusions have been built into the package.

Burbank's Turn Key Package includes:

- Stainless steel kitchen appliances
- Internal and external light fittings
- Choice of three internal colour schemes
- Coloured concrete paving to path, porch, driveway, pergola/alfresco
- Electric panel heating with timers
- Drought tolerant landscaping to front yard and adjacent driveways
- Rear yard fencing
- Letterbox, clothesline and TV antenna
- Remote access to Garage
- Solar Hot Water Service

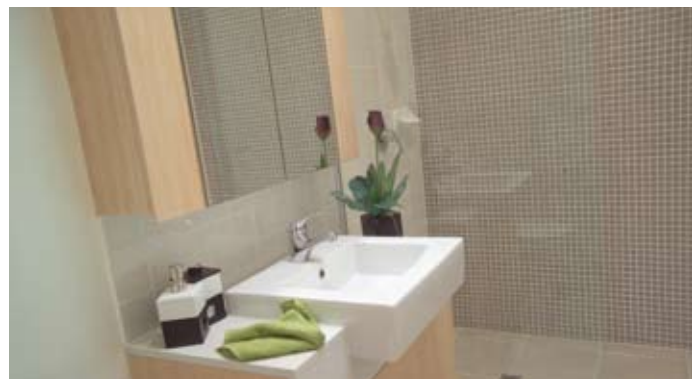


With prices starting from

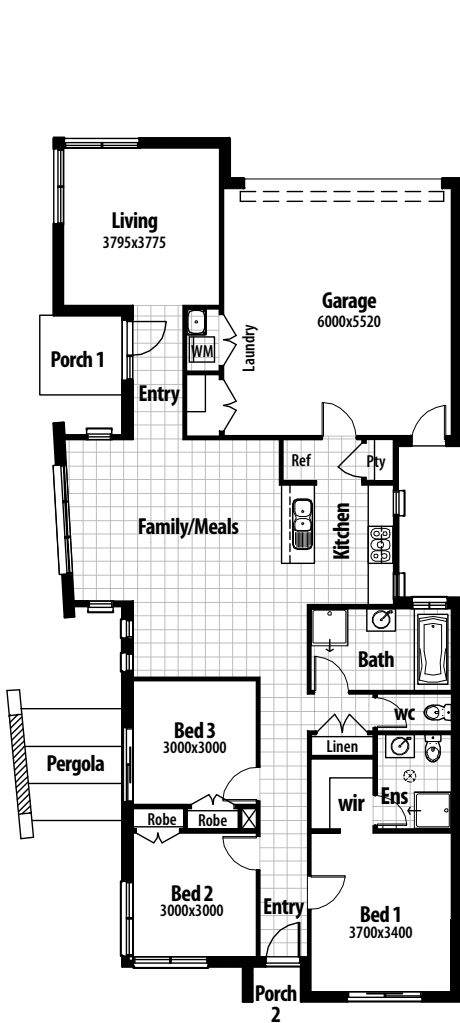
\$299,900

or even less with the First Home Owners Grant

\$281,900*

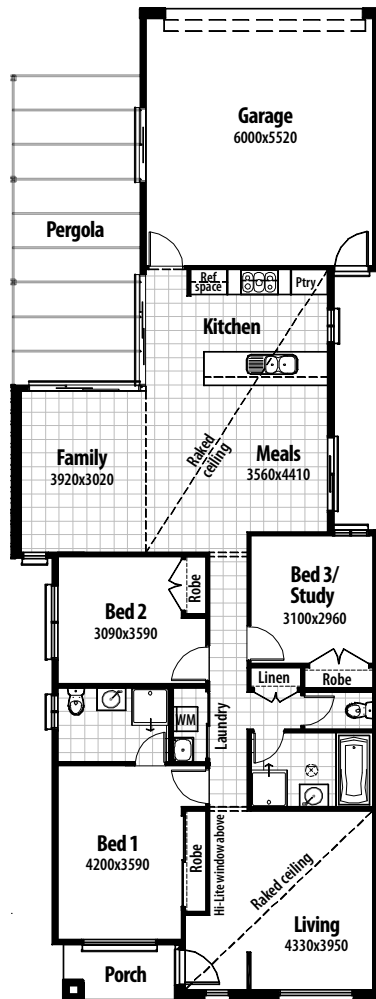


History and natural beauty surrounds you with ancient Red River Gums preserved throughout the estate, the serenity of the waterway at your doorstep and amazing views of the Kinglake Ranges welcoming you home each day. All this comes with the convenience of being walking distance from transport, amenities and the new Laurimar Retail precinct.



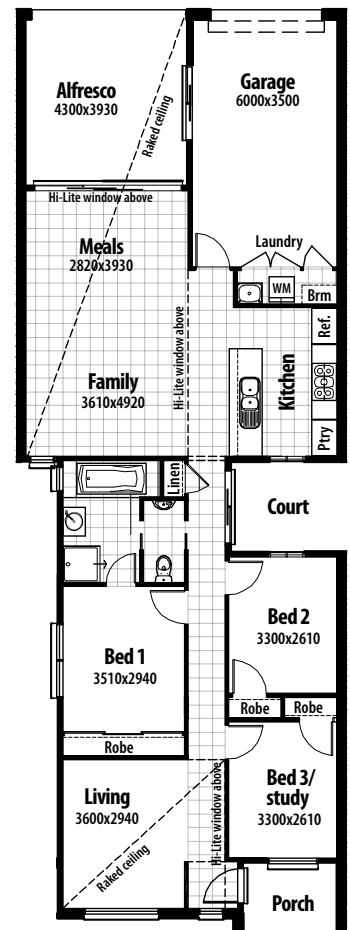
The Euroa

Lot: 209, 267
& mirror image of 218
Total area: 182.34sq.m



The Myrtleford

Lot: 210, 244, 220 & mirror image of lot 211, 216 & 217
Total area: 192.60sq.m



The Beechworth

Lot: 212, 214, 216 & 222 & mirror image of lot 213, 215, 221 & 223
Total area: 159.75sq.m

