

RIPPLESIDE APARTMENTS

step into style @ REFLECTIONS Tarneit



The combination of a clever layout, sharp colour schemes and a host of quality inclusions for each individual apartment allows you to relax, knowing all the finer details have been taken care of. Come home to style, comfort and quality with a designer kitchen with quality appliances and ultra modern finishes in every room.

A SIMPLE CHOICE

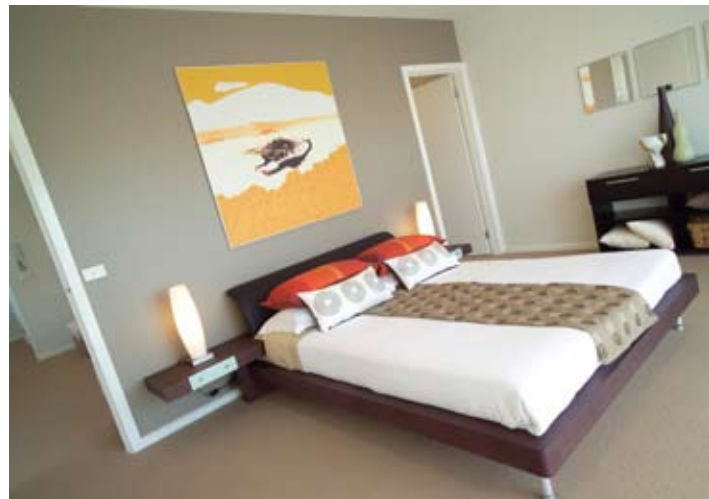
Your turn-key package makes your choice delightfully affordable with inclusions like:

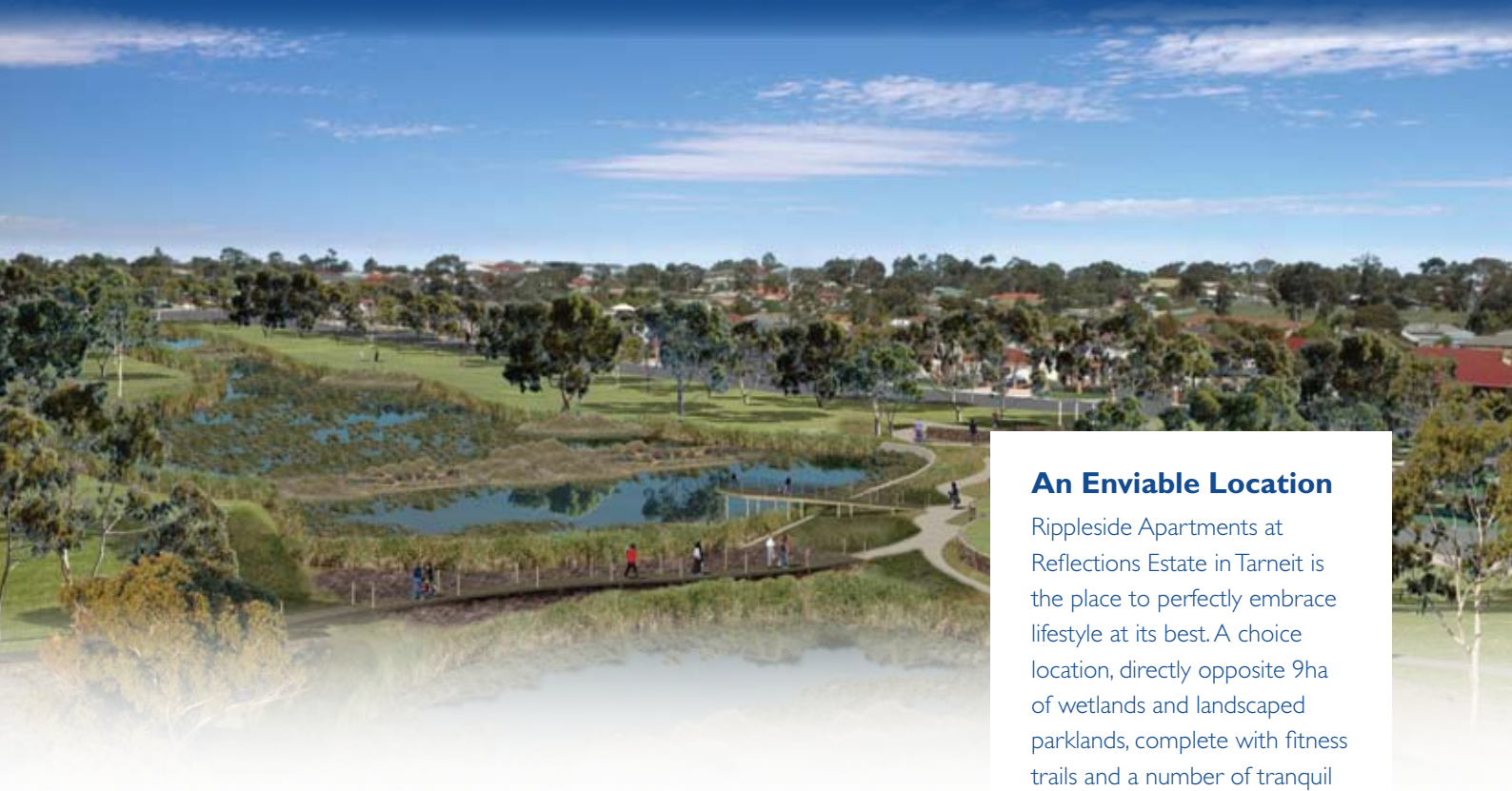
- A choice of internal colour schemes
- Internal and external light fittings
- Drought tolerant landscaping
- Quality fixtures and fittings
- Westinghouse stainless steel kitchen appliances
- Coloured concrete paving
- Letterbox and TV antenna
- Remote access to garage/carport
- Electric panel heating with timers to living and bedrooms

With a starting price of under

\$250,000

or even less if you are eligible for the First Home Owners Grant, it's a great opportunity to step into home ownership.





An Envidable Location

Rippleside Apartments at Reflections Estate in Tarneit is the place to perfectly embrace lifestyle at its best. A choice location, directly opposite 9ha of wetlands and landscaped parklands, complete with fitness trails and a number of tranquil resting places to enjoy.

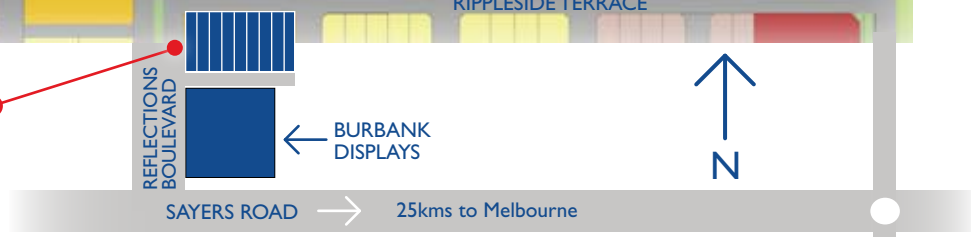
Reflections Wetlands Park



Rippleside Apartments

Lot: G:15 F:16	Lot: G:13 F:14	Lot: G:11 F:12	Lot: G:9 F:10	Lot: G:7 F:8	Lot: G:5 F:6	Lot: G:3 F:4	Lot: G:1 F:2
-------------------	-------------------	-------------------	------------------	-----------------	-----------------	-----------------	-----------------

G = Ground floor
F = First floor



Lifestyle at its best,
under 30 mins drive
from Melbourne's CBD.