

COVELLO 19

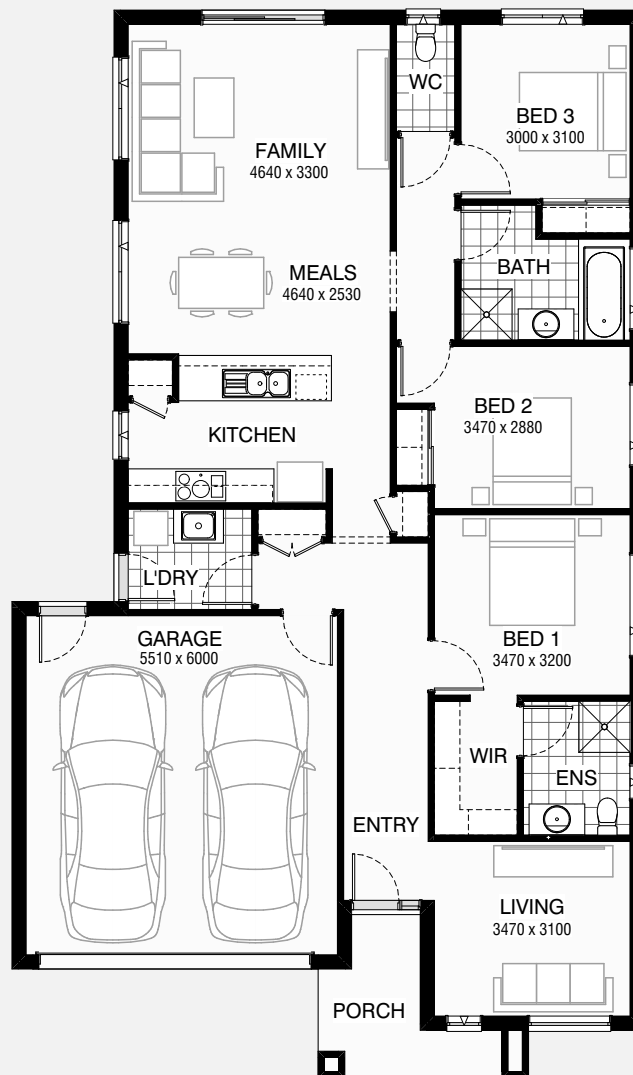
3 2 2

Total squares 19.3sq

B
SERIES

Minimum
Lot Width
12.5m

Minimum
Lot Length
25.0m



Design Dimensions
11,150mm(W) x 18,830mm(L),

Facade Choices
Brentwood, Glendale, Inglewood,
Malibu, Northridge, Pasadena, Santa Monica.
Details based on Inglewood façade floorplan (illustrated)

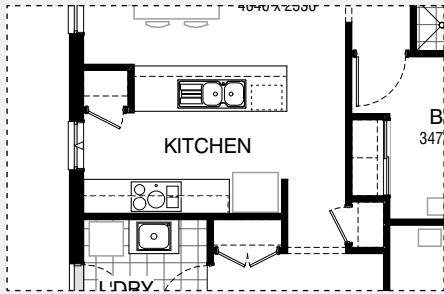
DESIGN DIMENSIONS

Residence	136.3m ²	14.7sq
Garage	36.5m ²	3.9sq
Porch	6.2m ²	0.7sq
Total	179.0m²	19.30sq

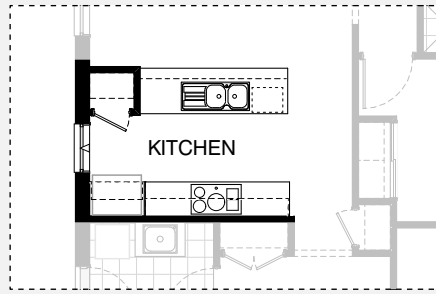
Burbank 

*Copyright conditions. All photos and illustrations are representative only. Floor plans and specifications may be varied by Burbank without notice, the dimensions are diagrammatic only and a Building Contract with final drawings will display correct dimensions and detail. All designs are the property of Burbank and must not be used, reproduced, copied or varied, wholly or in part without written permission from an authorised Burbank representative. Copyright Burbank Australia Pty Ltd. ABN 91 007 099 872. Builders Registration Number CDB-U-52603.

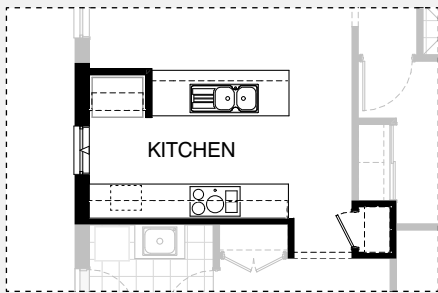
KITCHEN OPTIONS



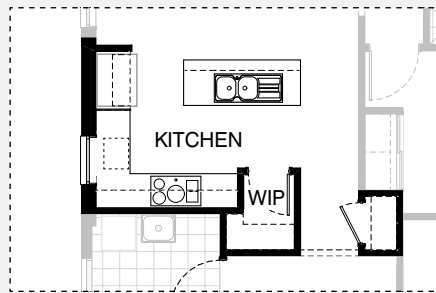
Master Kitchen Design



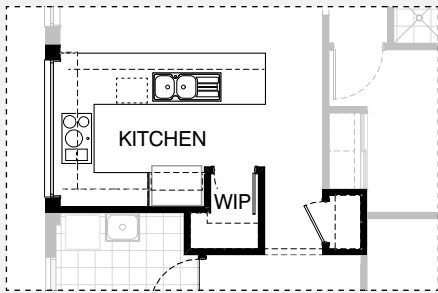
K1



K2

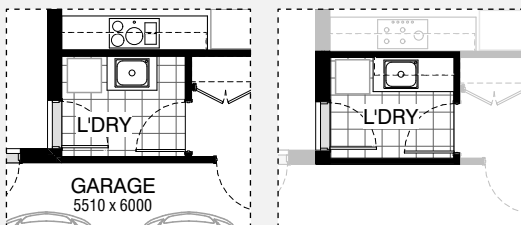


K3



K4

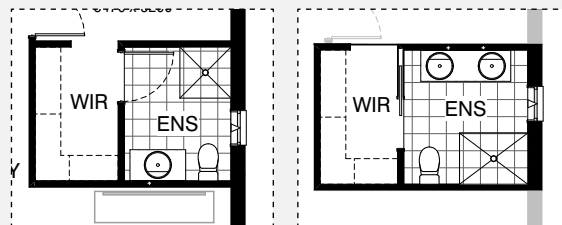
LAUNDRY OPTIONS



Master Laundry Design

LD1

ENSUITE OPTIONS

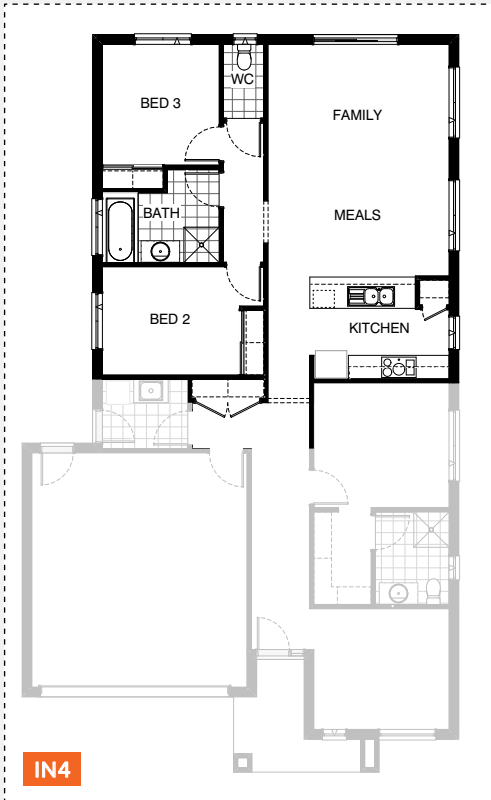
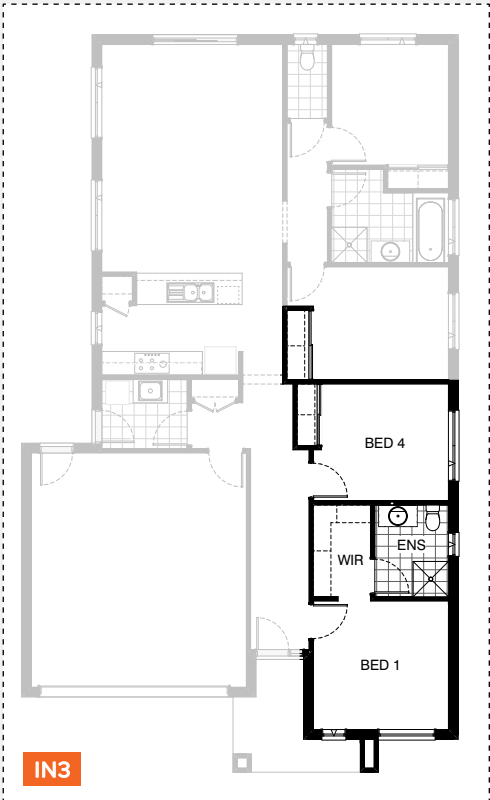
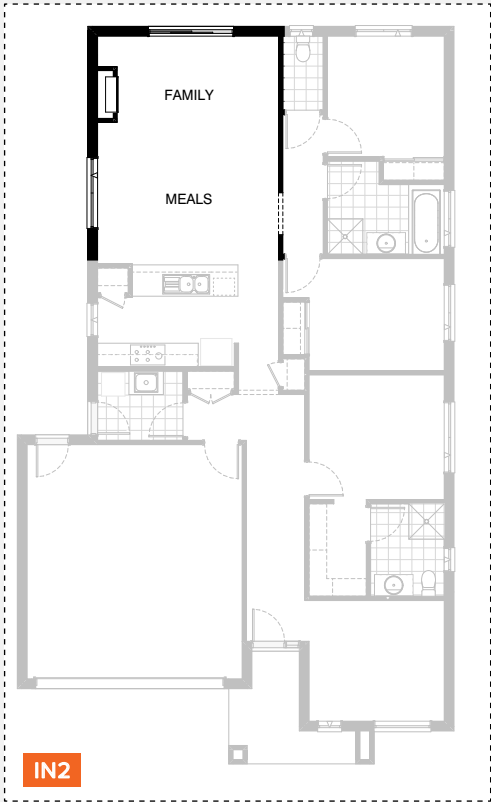
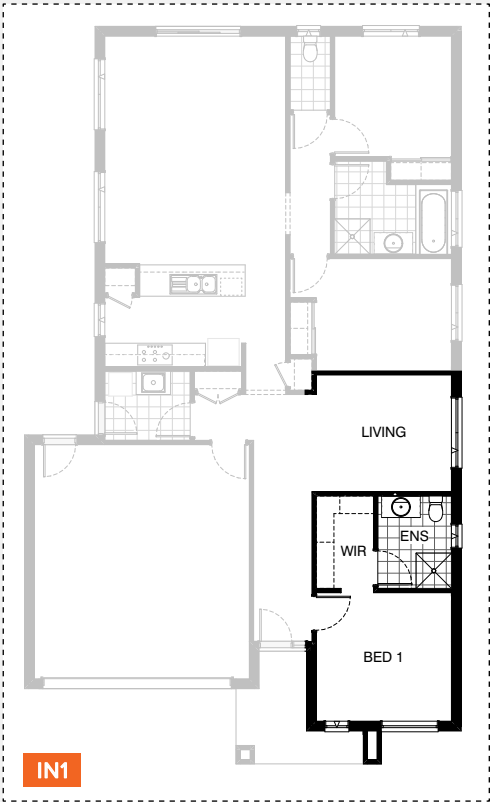


Master Ensuite Design

EN1

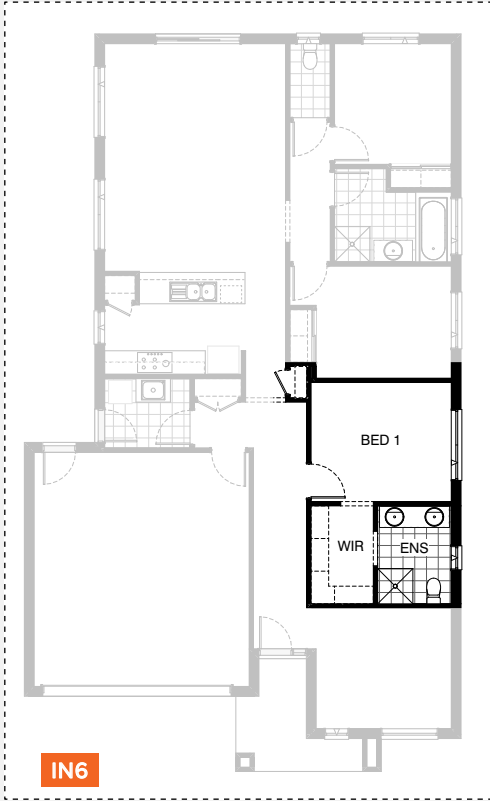
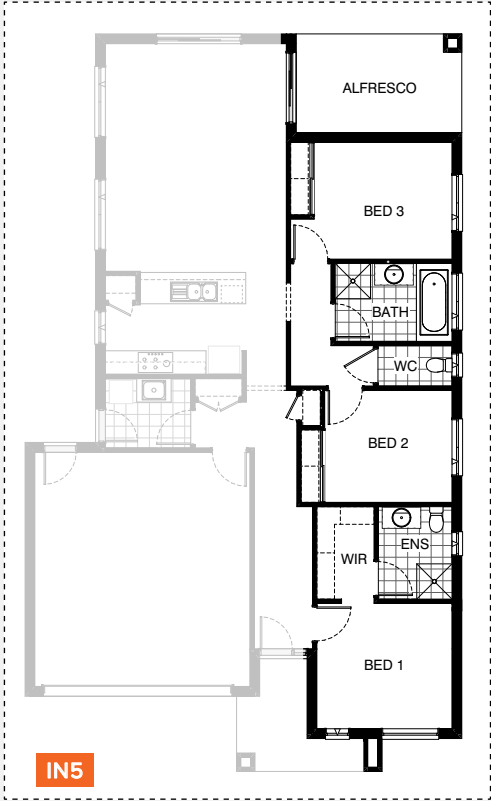


INTERNAL OPTIONS

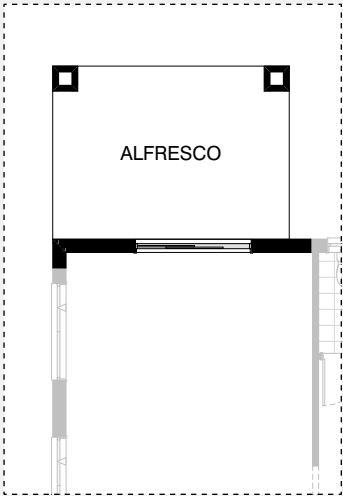




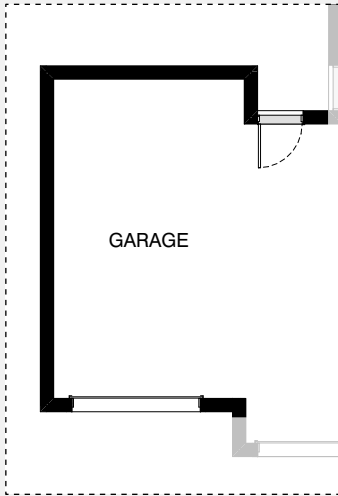
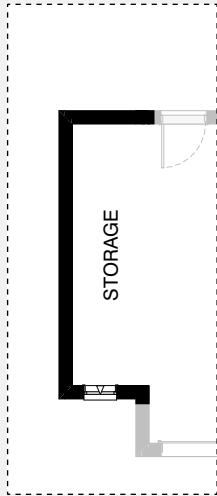
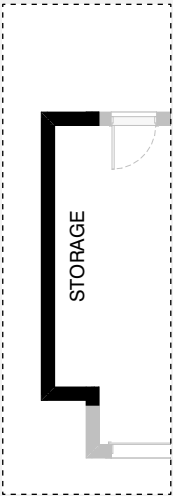
INTERNAL OPTIONS



EXTERNAL OPTIONS



GARAGE OPTIONS



COVELLO 19

OPTION DESCRIPTIONS

Kitchen Option 01

Provide Kitchen Upgrade with 3No. 800mm base cabinets, 1No. 900mm underbench oven with 900mm cooktop & retractable rangehood above, 2No. 800mm overhead cabinets, 1No. laminated open shelf above refrigerator space, plaster lined Pantry with 1No. 620mm flush panel hinged door and 450mm shelves, 1No. 450mm drawer unit, 1No. laminated DW provision, 1No. laminated MW provision with pot drawer below and additional benchtop and tiled splashback to suit.

Kitchen Option 02

Provide Kitchen Upgrade by deleting Broom cupboard and relocating Pantry. Provide 1No. 300mm cabinet, 1No. 350mm base cabinet, 2No. 800mm cabinets, 1No. 900mm base cabinet, 1No. 450mm drawer unit, 1No. 600mm overhead cabinet, 2No. 800 overhead cabinets, 1No. 300mm laminated overhead open shelves, 1No. laminated MW provision with pot drawer below, 1No. laminated DW provision, 1No. 900mm underbench oven with 900mm cooktop & retractable rangehood above, 1No. laminated open shelf above refrigerator space, additional benchtop and tiled splashback to suit.

Kitchen Option 03

Provide Kitchen and W.I.P Option by deleting Linen cupboard, reduce Laundry passage by 140mm and provide site build plaster lined W.I.P. 4No. 300mm and 4No. 450mm deep shelves and 1No. 720mm flush panel hinged door. Provide 1No. 450mm and 1No. 600mm base cabinet, 1No. 900mm base cabinet, 1No. 450mm drawer unit, 1No. 800mm blind carcass with 1No. 350mm door, 1No. 600mm overhead cabinet, 1No. 900mm overhead cabinet, 1No. laminated DW provision, 1No. laminated MW provision with pot drawer below, 1No. laminated open shelf above refrigerator space, 1No. 900mm underbench oven with 900mm cooktop & retractable rangehood above and 1No. 1200mm x 850mm aluminium fixed window with no bottom reveal and additional tiled splashback and benchtop to suit. Convert Broom cupboard into Linen cupboard, increase width by 140mm in line with W.I.P wall, provide 720mm hinged door in lieu of 620mm door

Kitchen Option 04

Provide Kitchen Upgrade including relocation of Linen to passage to create W.I.P, 900mm deep Kitchen island bench. 1No. 900mm underbench oven with 900mm cooktop & retractable rangehood above.

Provide

2No. 150mm base cabinets, 1No. 600mm base cabinet, 1No. 900mm base cabinet, 1No. 450mm drawer unit, 2No. 800mm corner base cabinets. 1No. 350mm overhead cabinet, 1No. 400mm overhead cabinet, 1No. 700mm overhead cabinet, 1No. 600mm overhead cabinet, 1No. 900mm corner overhead cabinet. 1No. laminated DW provision, 1No. MW. provision with pot drawer below, 1No. laminated open shelf above refrigerator space including 16mm laminated end panel and additional benchtop and tiled splashback to suit. Provide 1No. 514mm x 2410mm aluminium fixed window with no bottom reveal to Kitchen splashback. Note: Reduces Meals by 200mm.

Laundry Option 01

Provide Laundry upgrade with inset trough in 32mm laminated benchtop. 1No. 450mm and 1No. 900mm base cabinets, 1No. 450mm and 1No. 900mm overhead cabinets and additional tiled splashback and benchtop to suit.

Ensuite Option 01

Provide Ensuite Option with 1No. 1200mm x 900mm tiled shower base in lieu of standard. 1No. 1582mm wide vanity unit with 2No. basins in lieu of standard. Increase Ensuite width by 300mm and decrease W.I.R width by 100mm and decrease Entry width by 200mm. Provide 870mm cavity sliding door off W.I.R in lieu of 870mm hinged door.

Internal Option 01

Relocate Living with Bed 1, Ensuite and W.I.R

Internal Option 02

Provide Real Flame Inspire 900 gas fireplace, 400mm off floor level in a 1400mm x 500mm boxed out plaster wall with a 4 sided black fascia to Family room side wall with capped gas point. Delete 1No. 514mm x 1800 aluminium awning window to Family and relocate Meals window by 360mm.

Internal Option 03

Provide Bedroom 4 option in lieu of Living room and relocate Bedroom 1 to suit. Decrease Ensuite length by 20mm, increase Bed 2 length by 20mm, increase Bed 2 robe width by 430mm Provide additional site built plaster lined robe with hanging rail and sliding doors and 1No. 870mm flush panel hinged door to Bed 4 and provide 1No. 1200mm x 1450mm aluminium awning window in lieu of standard to Bed 4 to suit and increase bulkhead width to 210mm in lieu of 90mm.



COVELLO 19

OPTION DESCRIPTIONS

Internal Option 04

Mirror rear section of Home including deletion of Broom cupboard and increase length of Bed 2 robe and increase length of Linen cupboard with 2No. 820mm hinged doors in lieu of 2No. 520mm doors.

Internal Option 05

Provide Alfresco option in lieu of Living including relocate Bed 1 to Living location. Relocate bed 2 to Bed 1 location including additional Robe space with vinyl sliding doors. Relocate WC, Bath and Bed 3 to provide 2520mm by 4230mm (10.7m²) Alfresco to rear under existing roof line with structural concrete floor and 1No. 470mm x 470mm brick pier. Provide 2095mm x 1810mm aluminium sliding door to Family / Alfresco. Note: Option not available with Internal01, Internal03 and Internal04.

Internal Option 06

Provide alternative Ensuite Option by reducing Bed 1 by 140mm towards rear of home and extend Ensuite and W.I.R. Extend Bed 1 and W.I.R. by 130mm into Passage including reduced Broom and provide 300mm deep shelves in lieu of 450mm. Remove 870mm door to Ensuite and provide 900mm opening via W.I.R. Relocate 900mm shower base and provide tiled shower base in lieu of standard. Move Ensuite window 240mm towards rear of home and provide 1782mm vanity unit with double basin in lieu of standard.

External Option 01

Provide Alfresco under dwelling roof line to rear of Family room including structural concrete floor, light point and 2No. 470mm x 470mm brick piers. Increases area by 14.35m². Increases length by 3240mm.

Garage Option 01

Provide extension to Garage to create additional Storage area. Increases area by 4.54m². Increases width by 840mm.

Garage Option 02

Provide extension to Garage to create Storage area including additional 2057mm x 610mm aluminium awning feature window. Increases area by 7.78m². Increases width by 1440mm.

Garage Option 03

Provide triple car Garage including additional 2410mm(w) Garage door as per colour selection. Increases area by 23.72m². Increases width by 3600mm.