

IDEAL LOT WIDTH

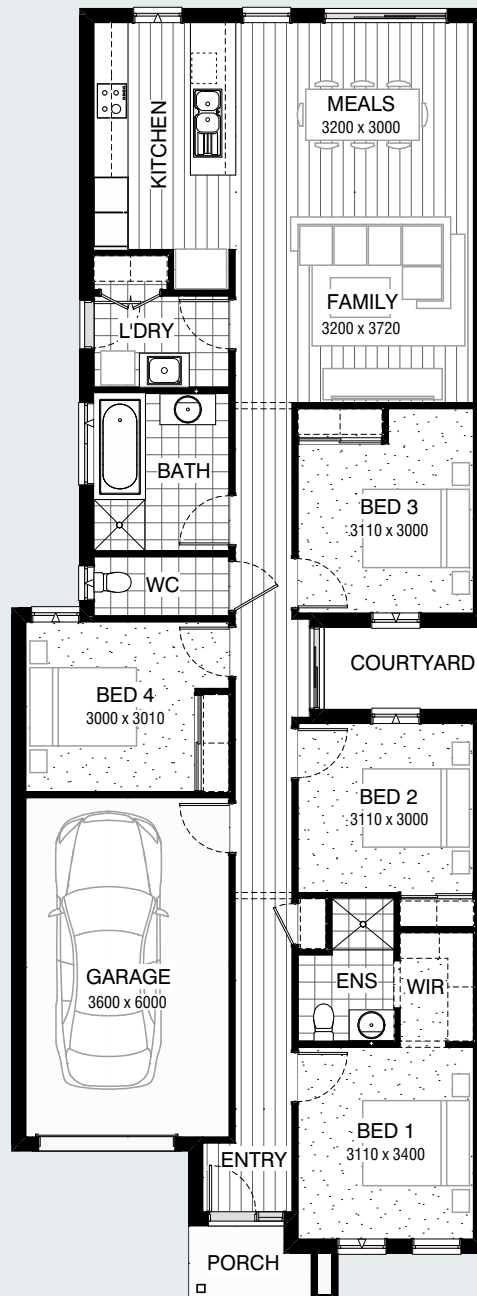
8.5m

IDEAL LOT LENGTH

28m



SERIES



Facades Available:

Avenue, Bayview, Boulevard,
Parkway (illustrated) and Strand

House Dimensions

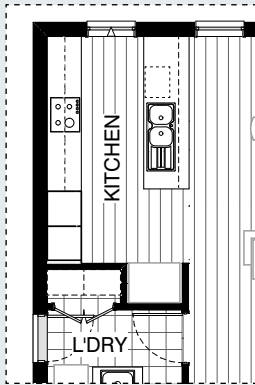
Total Width 8,390mm
Total Length 22,790mm

Design Dimensions

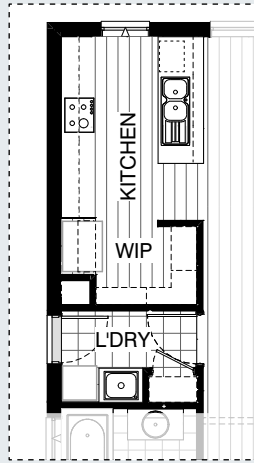
Residence	1371m ²	14.8sq
Garage	23.8m ²	2.6sq
Porch	3.0m ²	0.3sq
Total	163.9m²	17.6sq

FLOORPLAN OPTIONS

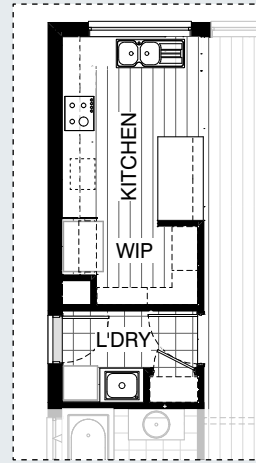
Master Kitchen Design



KITCHEN OPTIONS

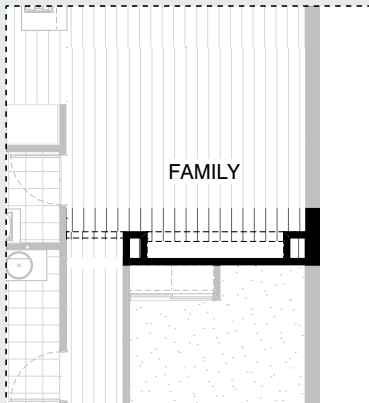


K01

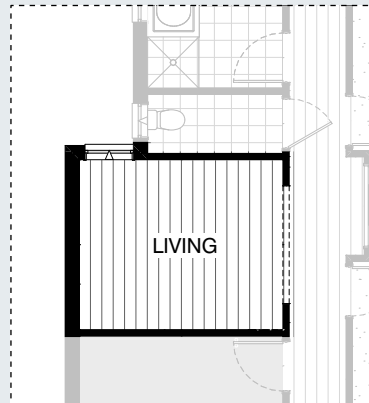


K02

INTERNAL OPTIONS

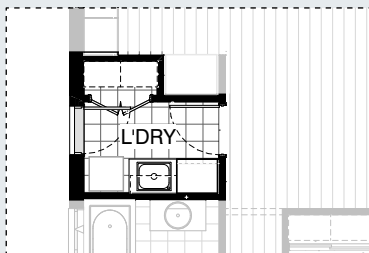


IN01



IN02

LAUNDRY OPTIONS



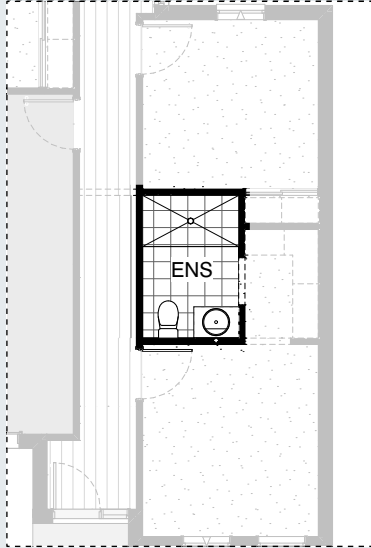
L01



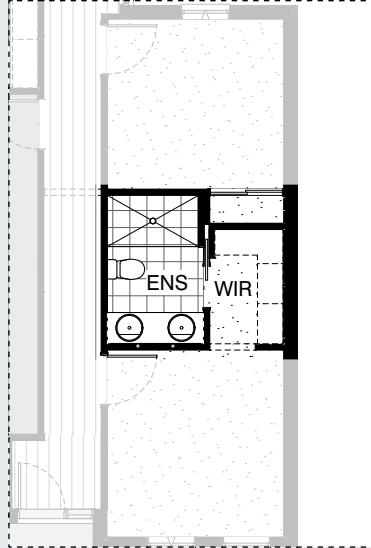
FLOORPLAN OPTIONS



ENSUITE OPTIONS



EN01



EN02

EXTERNAL OPTIONS



EX01

OPTION DESCRIPTIONS

KITCHEN OPTIONS

Kitchen Option 01

Provide Kitchen upgrade option, including:
 relocated Ref. space with open shelf,
 600mm under bench oven and cooktop,
 900mm retractable rangehood,
 dishwasher provision,
 microwave provision with pot drawer,
 1No. 450mm drawer unit,
 3No. 900mm base cupboards,
 2No. 150mm base cupboards,
 2No. 900mm overhead cupboards,
 1No. 450mm overhead cupboard,
 Provide Walk-in Pantry, including:
 1No. run of 450mm shelving,
 1No. run of 300mm shelving.
 Remove built-in Linen cupboard to Laundry and provide
 additional built-in Linen cupboard with 720mm hinged door.
 Including trough with laminate benchtop,
 1No. 700mm base cupboard.

Kitchen Option 02

Provide L-shaped Kitchen upgrade option, including:
 additional benchtop and tiled splashback,
 relocated Ref. space with open shelf,
 600mm under bench oven and cooktop,
 900mm retractable rangehood,
 dishwasher provision,
 microwave provision with pot drawer,
 1No. 450mm drawer unit,
 1No. 900mm base cupboard,
 2No. 150mm base cupboards,
 2No. 700mm base cupboards,
 1No. 300mm base cupboard,
 1No. 900mm corner base cupboard with bi-fold door,
 2No. 900mm overhead cupboards,
 1No. 450mm overhead cupboard,
 1No. 1200mm x 1810mm aluminum fixed window with no bottom reveal
 in lieu of standard.
 Provide Walk-in Robe, including:
 1No. run of 450mm shelving,
 1No. run of 300mm shelving.
 Remove built-in Linen cupboard to Laundry and provide
 additional built-in Linen cupboard with 720mm hinged door.
 Including trough with laminate benchtop,
 1No. 700mm base cupboard.

LAUNDRY OPTIONS

Laundry Option 01

Provide Laundry upgrade option, including:
 trough with laminate benchtop,
 1No. 800mm base cupboard,
 1No. 800mm overhead cupboard,
 1No. 700mm laminate Linen unit.

INTERNAL OPTIONS

Internal Option 01

Provide built-in joinery option to Family room, including:
 450mm deep 32mm thick laminate benchtop,
 2No. 800mm T.V units,
 1No. 700mm T.V unit,
 2No. 300mm deep 60mm thick open shelves,
 2No. plaster lined Voids with bulkhead over.

Internal Option 02

Provide additional Living area in lieu of Bed 4, including:
 Remove built-in Robe and hinged door,
 Provide 2No. 450mm nib walls with bulkhead over.

EXTERNAL OPTIONS

External Option 01

Provide Alfresco option, including:
 2No. additional 470mm x 470mm brick piers with
 135mm x 135mm timber post,
 additional structural concrete slab,
 additional tiled roof over.
 Provide 2095mm x 3590mm aluminium sliding door
 in lieu of standard sliding door and fixed window.
 Note: option increases total floor area by 13.29m².

ENSUITE OPTIONS

Ensuite Option 01

Provide Ensuite upgrade option, including:
 1690mm x 900mm tiled shower base in lieu of standard.
 Remove built-in Linen cupboard.

Ensuite Option 02

Provide Ensuite upgrade option, including:
 1600mm x 900mm tiled shower base,
 1582mm vanity with 1690mm benchtop and double basins, relocated toilet,
 720mm cavity sliding door in lieu of bulkhead opening.
 Note: Option decreases Bed 1 by 100mm.