

CARTWRIGHT 25

4 2 2

Total squares 25.3sq

B
SERIES

Minimum
Lot Width
14m

Minimum
Lot Length
28.0m



Design Dimensions
12,590mm(W) x 20,990mm(L).

Facade Choices
Brentwood, Glendale, Inglewood,
Malibu, Northridge, Pasadena, Santa Monica.
Details based on Inglewood façade floorplan (illustrated)

DESIGN DIMENSIONS

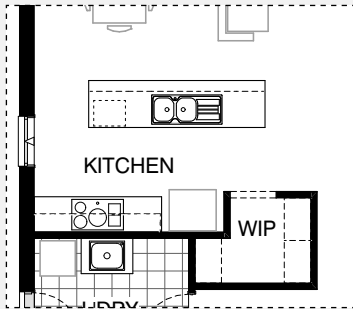
Residence	181.0m ²	19.5sq
Garage	36.4m ²	3.9sq
Porch	6.9m ²	0.7sq
Alfresco	10.9m ²	1.2sq
Total	235.2m²	25.3sq

Burbank

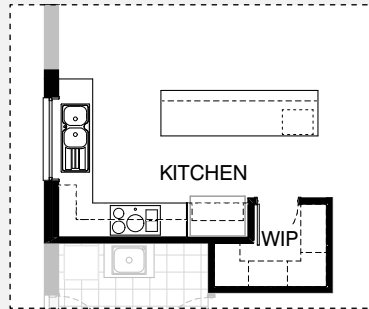
*Copyright conditions. All photos and illustrations are representative only. Floor plans and specifications may be varied by Burbank without notice, the dimensions are diagrammatic only and a Building Contract with final drawings will display correct dimensions and detail. All designs are the property of Burbank and must not be used, reproduced, copied or varied, wholly or in part without written permission from an authorised Burbank representative. Copyright Burbank Australia Pty Ltd. ABN 91 007 099 872. Builders Registration Number CDB-U-52603.



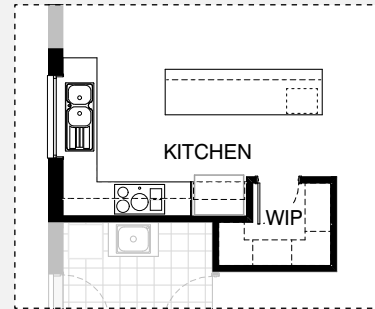
KITCHEN OPTIONS



Master Kitchen Design

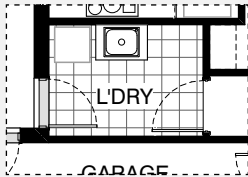


K01

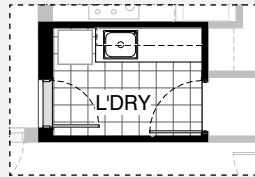


K02

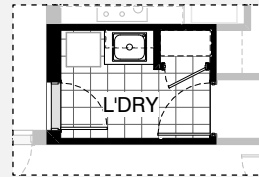
LAUNDRY OPTIONS



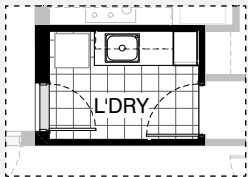
Master Laundry Design



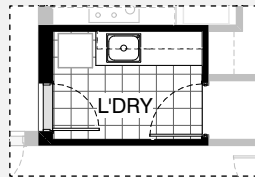
LD01



LD02

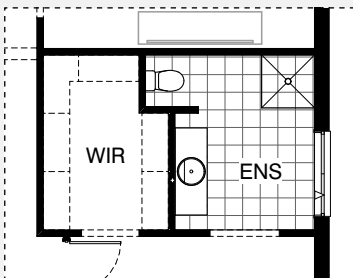


LD03

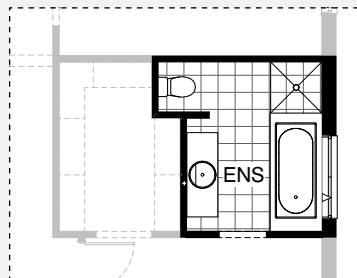


LD04

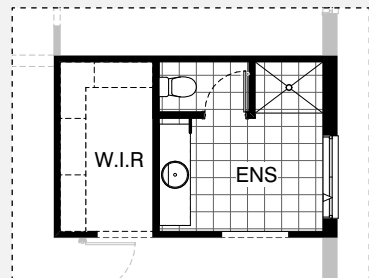
ENSUITE OPTIONS



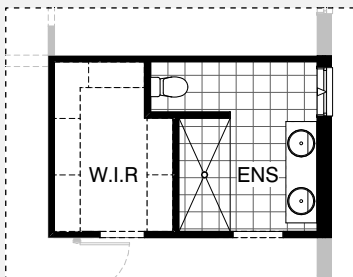
Master Ensuite Design



EN01



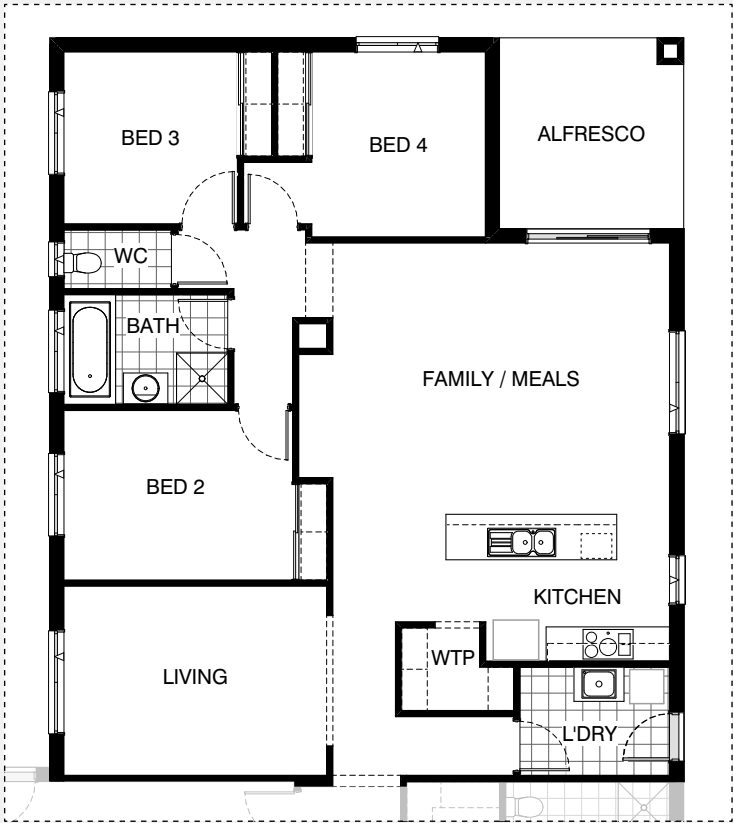
EN02



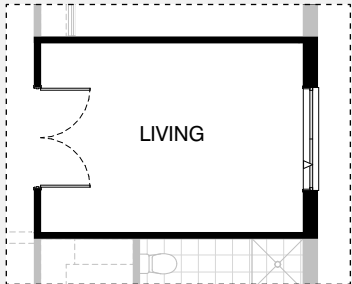
EN03



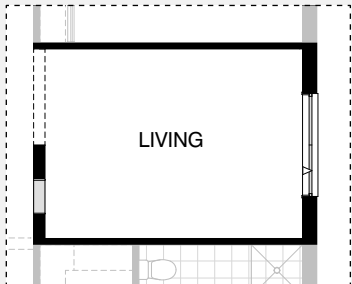
INTERNAL OPTIONS



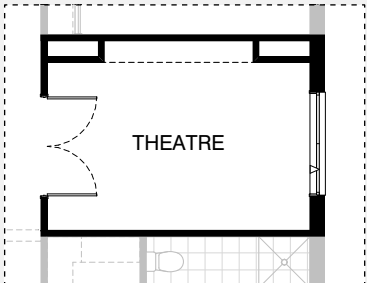
IN01



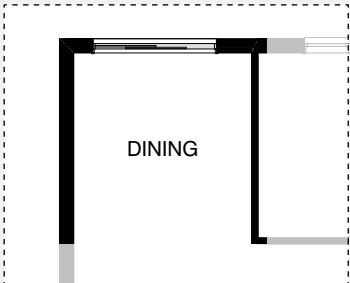
IN02



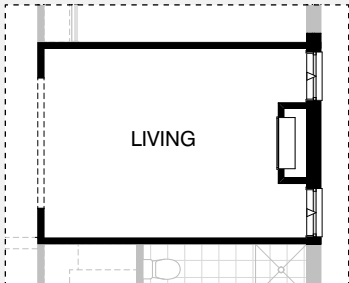
IN03



IN04



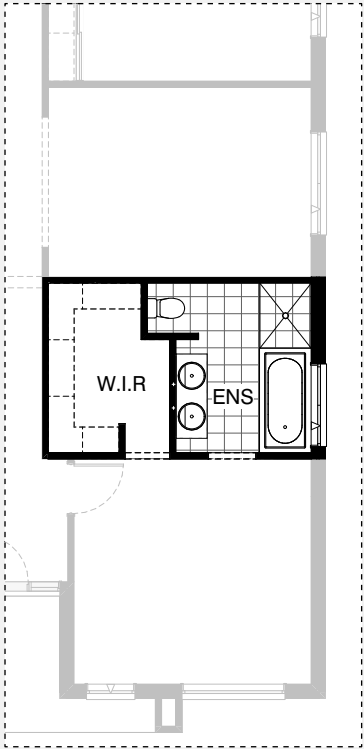
IN05



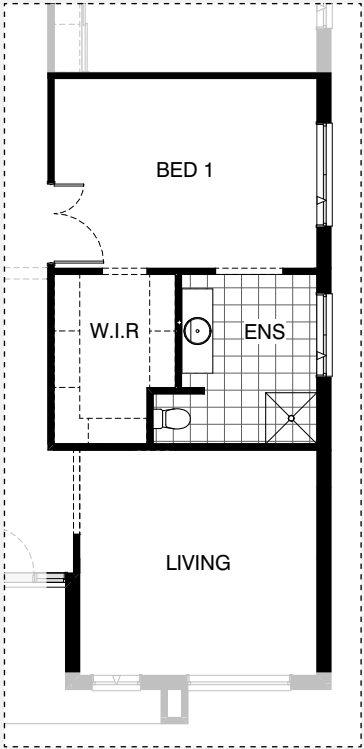
IN06



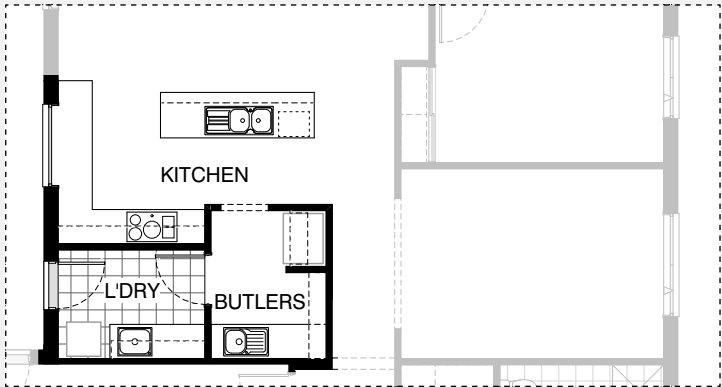
INTERNAL OPTIONS



IN07



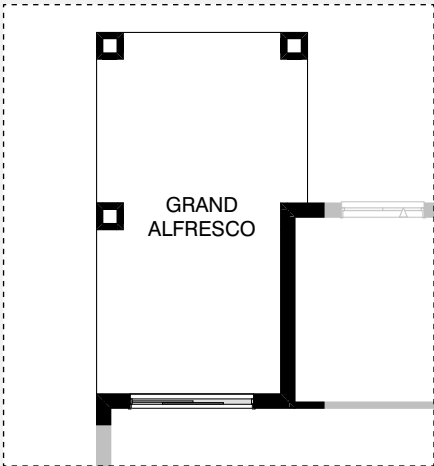
IN08



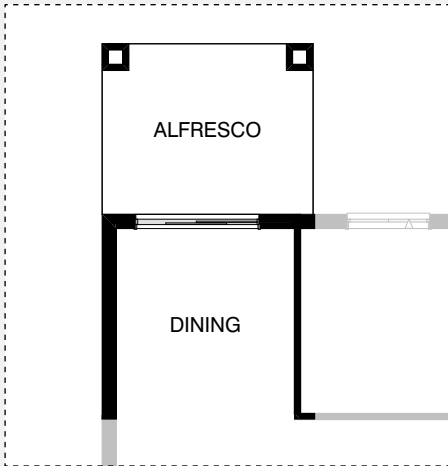
IN09



EXTERNAL OPTIONS

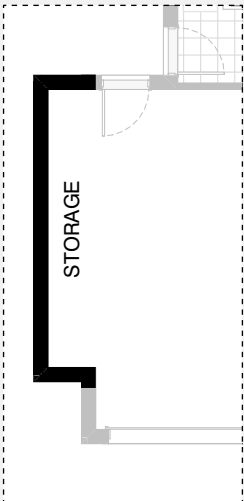


EX01

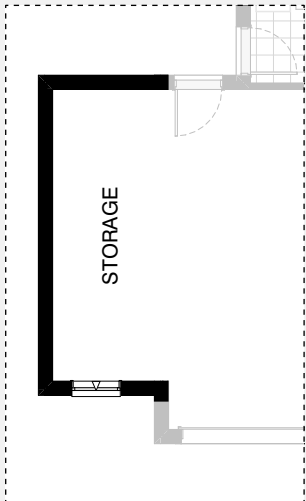


EX02

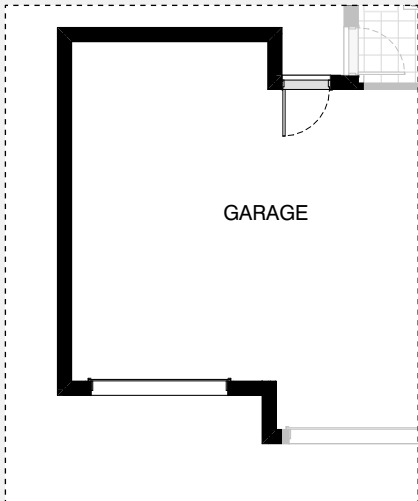
GARAGE OPTIONS



G01



G02



G03

CARTWRIGHT 25

OPTION DESCRIPTIONS

KITCHEN OPTIONS

Kitchen Option 01

Provide Kitchen option with additional
1No. laminated MW provision with pot drawer below, 1No. laminated DW provision,
3No. 800mm base cabinets, 1No. 450mm base cabinet, 1No. 400mm base cabinet, 1No. 450mm drawer unit,
1No. 900mm base corner carcass with 2/300mm doors, 2No. 300mm overhead cabinets and
1No. 450mm overhead cabinet,
1No. 600mm overhead corner carcass with 2/275mm doors, open shelf above refrigerator space,
1No. 900mm underbench oven with cooktop and retractable rangehood.
Provide 1No. 1200mm x 1450mm aluminium fixed window with no bottom reveal in lieu of standard with additional tiled splashback and benchtop to suit and additional 450mm shelves to WIP.

Kitchen Option 02

Provide Kitchen option with additional
1No. laminated MW. provision with pot drawer below, 1No. laminated DW. provision,
3No. 800mm base cabinets, 1No. 450mm base cabinet, 1No. 400mm base cabinet, 1No. 450mm drawer unit,
1No. 900mm base corner carcass with 2/300mm doors, 2No. 400mm overhead cabinets,
1No. 450mm overhead cabinet,
1No. 900mm carcass with integrated rangehood with fixed door panels, open shelf above refrigerator space,
1No. 900mm underbench oven with cooktop.
Delete W.T.P and provide W.I.P with additional 450mm deep shelves and relocate 1No. 720mm flush panel door and delete opening / bulkhead to Pantry and provide 1No. 1200mm x 1450mm aluminium fixed window with no bottom reveal in lieu of standard with additional tiled splashback and benchtop to suit.

LAUNDRY OPTIONS

Laundry Option 01

Provide Laundry option including:
inset trough in 32mm laminated benchtop, 1No. 800mm base cabinet, 2No. 900mm overhead cabinets,
additional tiled splashback and benchtop to suit.

Laundry Option 02

Provide Laundry Option with additional plaster lined site built broom cupboard with 1no. 720mm flush panel hinged door, s.s. inset trough in 32mm laminated bench top, 1no. 800mm base cabinet, 1no. 800mm overhead cabinet, additional tiled splashback and bench top to suit.

Laundry Option 03

Provide Laundry upgrade including:
inset trough in 32mm laminated benchtop, 1No. 900mm base cabinet, 1No. 450mm base cabinet, 1No. 900mm overhead cabinet,
1No. 450mm overhead cabinet and 1No. 400mm laminated broom unit, additional tiled splashback and benchtop to suit.

Laundry Option 04

Provide Laundry upgrade including:
inset trough in 32mm laminated benchtop, 2No. 900mm base cabinets, 2No. 900mm overhead cabinets,
additional tiled splashback and benchtop to suit.

ENSUITE OPTIONS

Ensuite Option 01

Provide Ensuite option with additional 1675mm bath with 900mm wide tiled hob.
Relocate shower door and reduce opening / bulkhead width by 350mm to suit.

Ensuite Option 02

Provide additional plaster lined stud wall with 720mm flush panel hinged door to WC.
1190mm x 900mm tiled shower base.
Reduce W.I.R by 500mm and delete shelving and provide 1782mm vanity in lieu of standard vanity.

Ensuite Option 03

Provide Ensuite upgrade with wall to wall 1990mm x 900mm tiled shower base, 1No. 1782mm wide vanity unit with 2No. basins in lieu of standard.
1No. 1800mm x 850mm aluminium awning window in lieu of standard and increase Ensuite width by 50mm and decrease W.I.R by 50mm to suit and reduce opening / bulkhead width by 300mm to suit.

INTERNAL OPTIONS

Internal Option 01

Mirror rear of house.

Internal Option 02

Provide 2no. 870mm flush panel hinged doors and additional plaster lined stud wall to Living in lieu of standard opening.

Internal Option 03

Provide 2No. 870mm flush panel hinged doors and additional plaster lined stud wall to Living in lieu of standard opening.

Internal Option 04

Convert standard Living room into Theatre room including 2no. 870mm flush panel hinged doors, additional plaster lined stud wall and feature wall with plaster columns and bulkhead above.

Internal Option 05

Convert standard Alfresco area to Dining room.
(Note:- This Option cannot be selected with Option External01)

Internal Option 06

Provide Real Flame Inspire 900 Gas fireplace, 400mm off floor level in a 1400mm x 500mm boxed out plaster wall with a 4 sided black fascia to Living room side wall with capped gas point. Provide additional 2No. 2057mm x 850mm aluminium awning feature windows in lieu of standard.

Internal Option 07

Provide alternate Ensuite and W.I.R design including: 1140mm x 900mm tiled shower base,
1675mm bath with 900mm wide tiled hob,
additional bowl to 1482mm vanity unit and W.I.R redesign.

Internal Option 08

Relocate Living with Bed 1 including mirror Ensuite and W.I.R.



CARTWRIGHT 25

OPTION DESCRIPTIONS

Internal Option 09

Provide Kitchen, Butlers Pantry and Laundry upgrade including reconfigured Pantry and Passage.

Provide Butlers Pantry redesign to suit including 850mm opening. Provide 1No. 1050mm blind corner cabinet with 600mm door, 1No. 900mm cooktop, 1No. 900mm underbench oven, 1No. 900mm retractable rangehood within 900mm overhead cabinet, 1No. 450mm drawer unit,

3No. 900mm base cabinets, 2No. 800mm base cabinets, 2No. 450mm base cabinets, 1No. 800mm overhead cabinet, 1No. 450mm overhead cabinet, 1No. 350mm overhead cabinet, 1No. laminated DW provision, 1No. laminated MW provision with pot drawer below, open shelf above refrigerator space.

Provide additional single bowl sink to Butlers including: additional 20mm stone benchtop and tiled splashback to suit. Provide 300mm deep laminated shelving unit to

Butlers as indicated. Provide 1No. 1200mm x 1450mm aluminium fixed window with no bottom reveal in lieu of standard with additional tiled splashback and benchtop to suit.

Provide Laundry upgrade with inset trough, 2No. 800mm base cabinets, 2No. 800mm overhead cabinets with additional tiled splashback and benchtop to suit. (Note: Option reduces Family / Meals by 90mm.)

EXTERNAL OPTIONS

External Option 01

Increase standard Alfresco length under dwelling roof line to create Grand Alfresco including:

Additional structural concrete floor and 2No. 470mm x 470mm brick piers.

(Note: This option cannot be selected with External02 and Internal05)
Increases area by 11.13m². Increases length by 3000mm

External Option 02

Convert standard Alfresco area to Dining room and provide Alfresco under dwelling roof line including: Additional structural concrete floor and 2No. 470mm x 470mm brick piers to rear of Dining room.

(Note: This Option cannot be selected with External01 and Internal05)
Increases area by 11.13m². Increases length by 3000mm

GARAGE OPTIONS

Garage Option 01

Provide extension to Garage to create additional Storage area. Increases area by 4.53m². Increases width by 840mm.

Garage Option 02

Provide extension to Garage to create Storage area including additional 2057 x 850 aluminium awning window. Increases area by 11.48m². Increases width by 2040mm.

Garage Option 03

Provide triple car Garage including: Additional 2140mm x 2410mm Garage door as per colour selection.

Increases area by 23.59m². Increases width by 3600mm.

