



FLOORPLAN OPTIONS

We personalise our floorplans. Talk to us about our huge range of ready-to-go design options.

Listed details based on Traditional facade floorplan (illustrated)

Facades available:

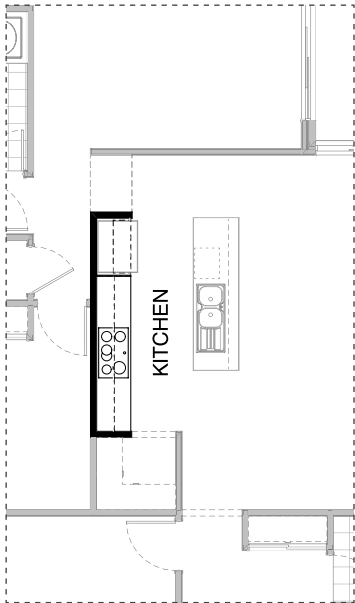
Coastal, Delta, Kingston, Nouveau
Salisbury, Traditional, York

Overall home width 11,270mm

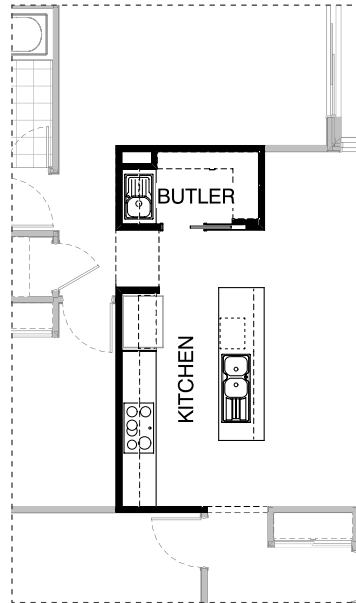
Overall home length 20,870mm

Residence	151.6m ²	16.3sq
Garage	37.4m ²	4.0sq
Porch	3.2m ²	0.3sq
Alfresco	12.1m ²	1.3sq
Total	204.3m²	22.0sq

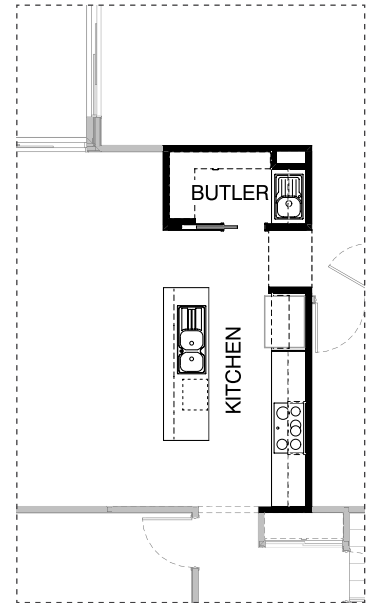
*Copyright conditions. All photos and illustrations are representative only. Floor plans and specifications may be varied by Burbank without notice, the dimensions are diagrammatic only and a Building Contract with final drawings will display correct dimensions and detail. All designs are the property of Burbank and must not be used, reproduced, copied or varied, wholly or in part without written permission from an authorised Burbank representative. Copyright Burbank Australia (QLD) Pty Ltd. ABN 77 103 014 615. QBCC 1046544.



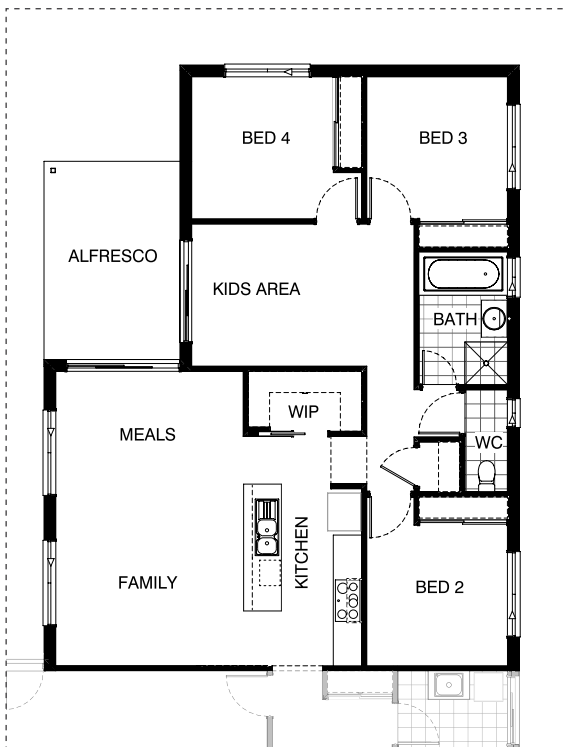
K01



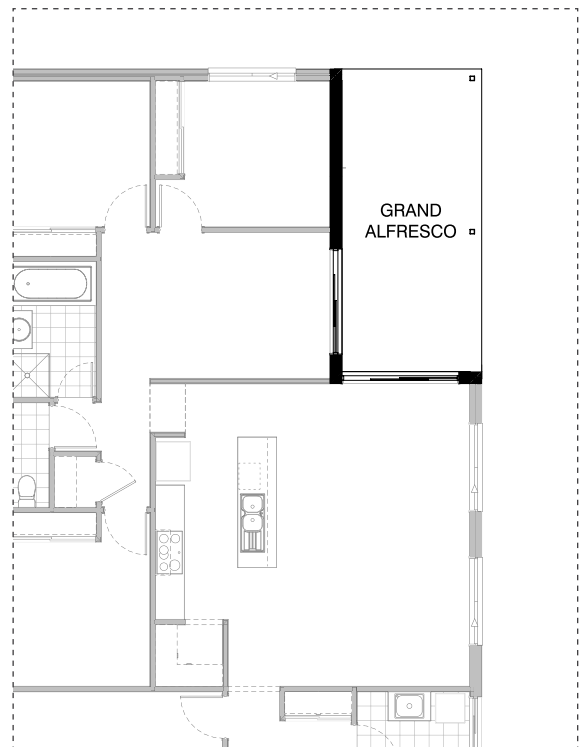
K02



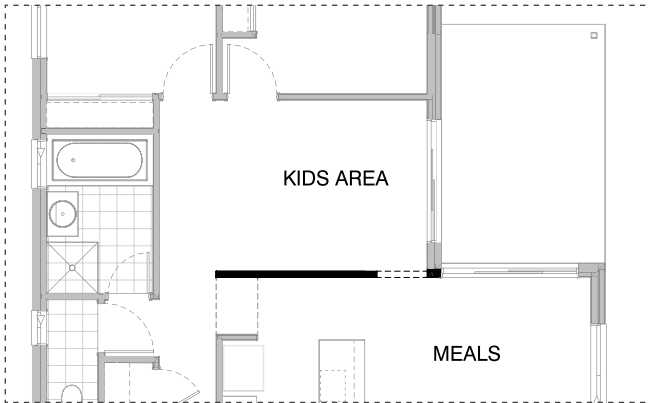
K03



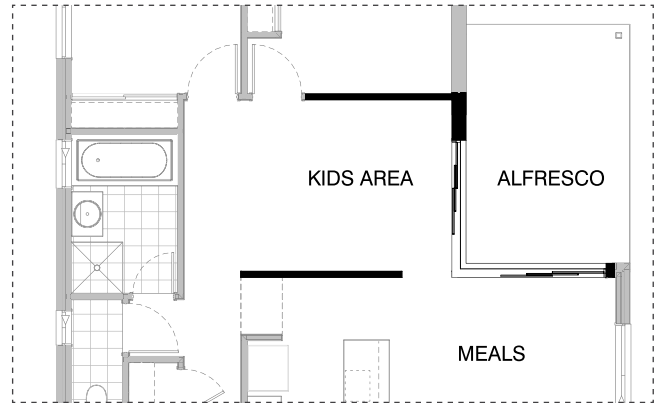
EX01



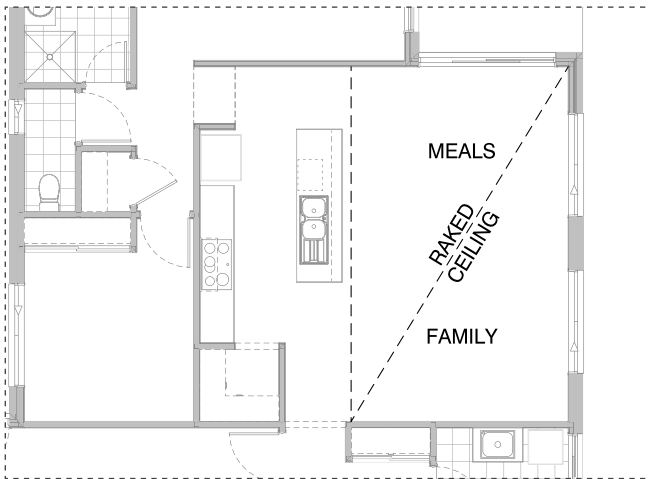
EX02



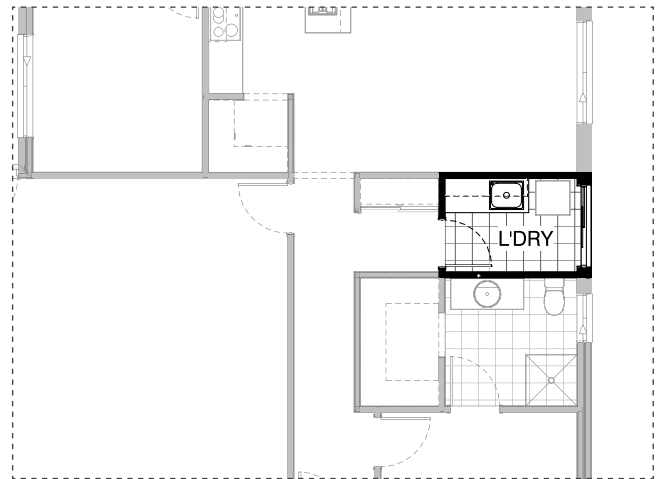
IN01



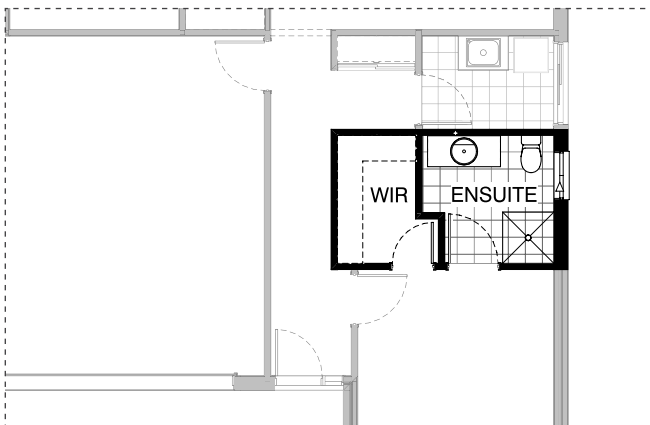
IN02



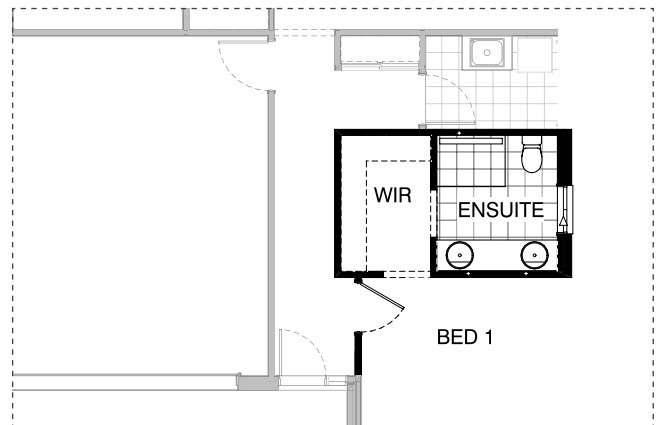
IN03



L01



EN01



EN02

OPTION DESCRIPTIONS**K01 - Kitchen Option 01**

Provide Kitchen upgrade option, including: 2No. 900mm overhead cupboards, 1No. 930mm open shelf over Ref. space.

K02 - Kitchen Option 02

Provide Butler's Pantry option which moves pantry to other side of Kitchen. New Kitchen includes: 900mm retractable rangehood, 900mm electric cooktop, 900mm under bench oven, 450mm drawer unit, dishwasher provision, microwave provision with pot drawer, 3No. 900mm base cupboards, 2No. 900mm overhead cupboards, 1No. 930mm open shelf over Ref. space. Butler's Pantry includes: additional laminated benchtop, 1No. 900mm base cupboard, 1No. 900mm overhead cupboard, single bowl sink, 4No. 300mm shelves, 4No. 450mm shelves, 720mm cavity sliding door, additional tiled splashback to suit

K03 - Kitchen Option 03

Provide Butler's Pantry in conjunction with option External01. Kitchen includes: 2No. additional 900mm overhead cupboards, 1No. 930mm open shelf over Ref. space. New Butler's Pantry includes: additional laminated benchtop, 1No. 900mm base cupboard, 1No. 900mm overhead cupboard, single bowl sink, 4No. 300mm shelves, 4No. 450mm shelves, 720mm cavity sliding door, additional tiled splashback to suit

EX01 - External 01

Provide mirrored rear section of the home. New kitchen includes: 900mm retractable rangehood, 900mm electric cooktop, 900mm under bench oven, 450mm drawer unit, dishwasher provision, microwave provision with pot drawer, 3No. 900mm base cupboard, New Walk-in Pantry includes: additional 4No. 450mm shelves and 720mm cavity sliding door.

EX02 - External 02

Provide Grand Alfresco option with additional light point, 2No. 88mm x 88mm painted timber post and tiled roof above. Option adds 5.88m² to the overall House area

IN01 - Internal Option 01

Provide option with 900mm wide opening between Meals and Kids Area with 300mm deep bulkhead above opening

IN02 - Internal Option 02

Provide (2107mm - 2710mm - 2410mm Aluminium corner sliding door) option in conjunction with option Internal01 only. Remove 300mm deep bulkhead to opening between Meals and Kids Area

IN03 - Internal Option 03

Provide raked ceiling option to Meals and Family with bulkhead, square set cornice and standard ceiling height over Kitchen

L01 - Laundry Option 01

Provide Laundry upgrade with laminate cupboards and stainless steel inset trough including 2No. 700mm base cupboards, 2No. 700mm overhead cupboards, additional benchtop and tiled splashback to suit

EN01 - Ensuite Option 01

Provide Ensuite option with 720mm hinged door access from Bed 1 directly to Walk-in Robe

EN02 - Ensuite Option 02

Provide Ensuite upgrade option with rearranged layout including: 2No. 850mm wide bulkhead openings in lieu of 1No. 870mm hinged door, 1No. 2082mm vanity with double basins, 2120mm wide wall-to-wall benchtop in lieu of standard, 1200mm x 900mm recessed tile shower base with grate drain and relocated toilet.

Note: option decreases size of Bed 1 by 140mm to accommodate.