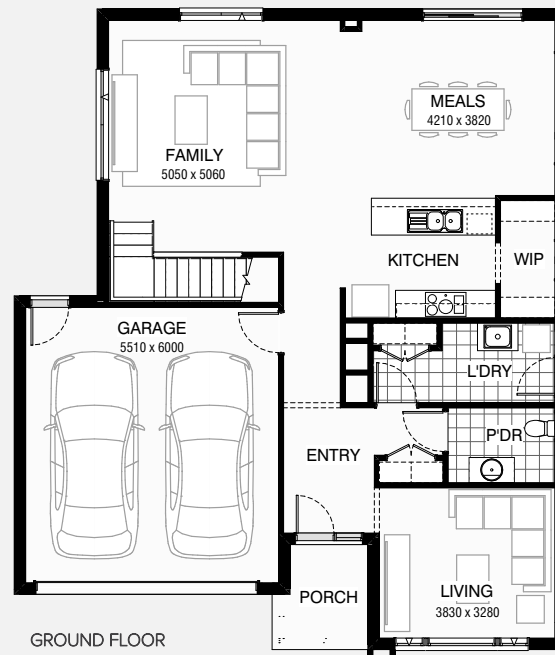
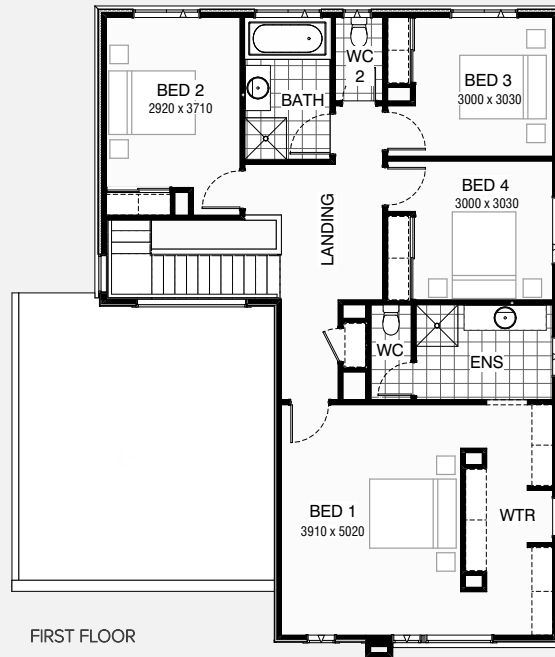


FAIRMOUNT 28

🏠 4 🛏 2.5 🚗 2

Total squares 27.5sq



Design Dimensions
11,990mm(W) x 13,910mm(L).

Facade Choices
Fullerton, Huntington, Moorpark,
Oakwood, Palisades, Redlands, Riverside.
Details based on Riverside façade floorplan (Illustrated)

DESIGN DIMENSIONS

Residence	214.9m ²	23.1sq
Garage	36.5m ²	3.9sq
Porch	4.3m ²	0.5sq
Total	255.7m²	27.5sq



Minimum Lot Width
14.0m

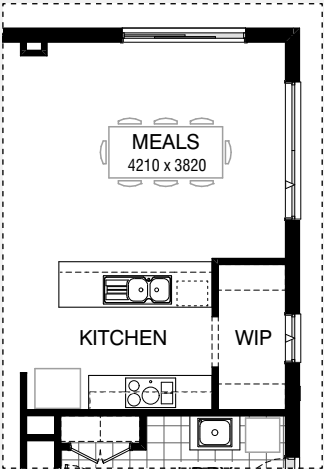
Minimum Lot Length
21.0m



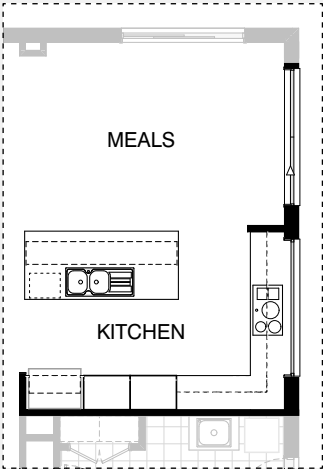
*Copyright conditions. All photos and illustrations are representative only. Floor plans and specifications may be varied by Burbank without notice, the dimensions are diagrammatic only and a Building Contract with final drawings will display correct dimensions and detail. All designs are the property of Burbank and must not be used, reproduced, copied or varied, wholly or in part without written permission from an authorised Burbank representative. Copyright Burbank Australia Pty Ltd. ABN 91 007 099 872. Builders Registration Number CDB-U-52603.



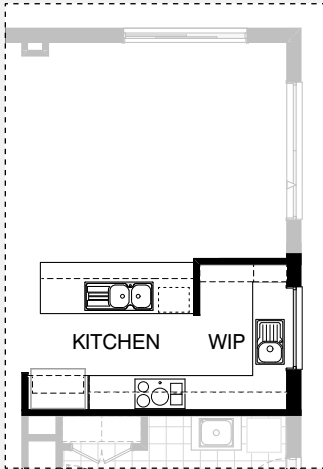
KITCHEN OPTIONS



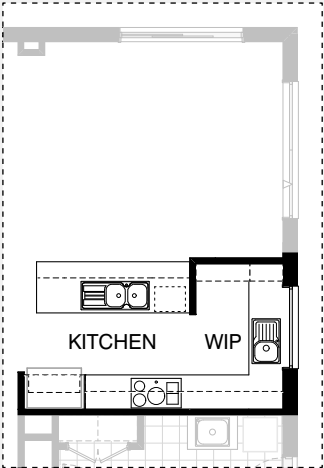
Master Kitchen Design



K01

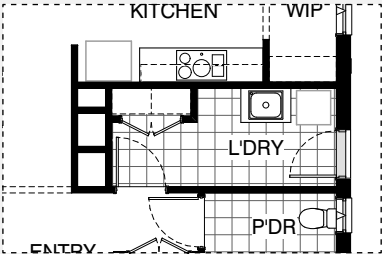


K02

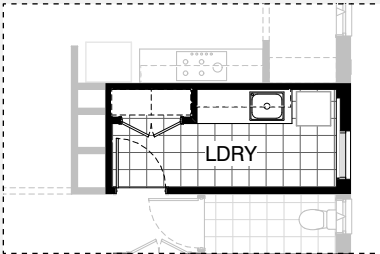


K03

LAUNDRY OPTIONS



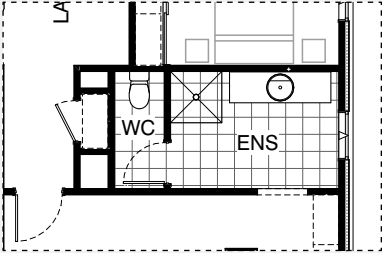
Master Laundry Design



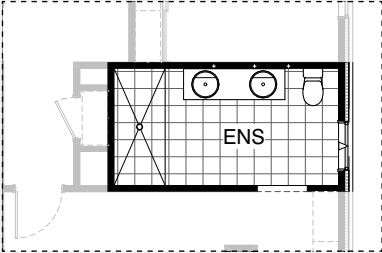
LD01



ENSUITE OPTIONS

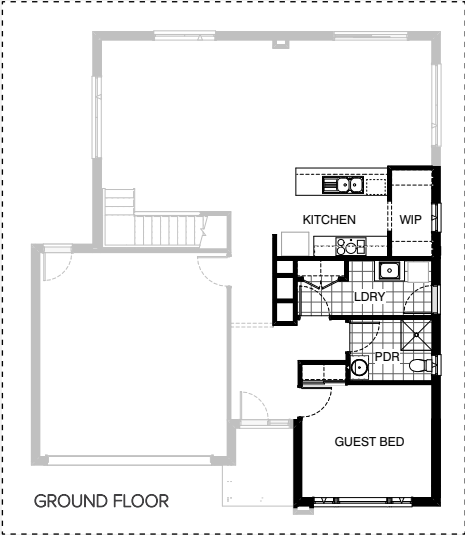


Master Ensuite Design

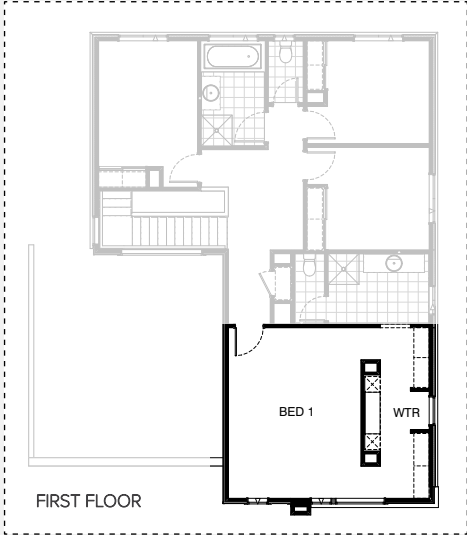


EN01

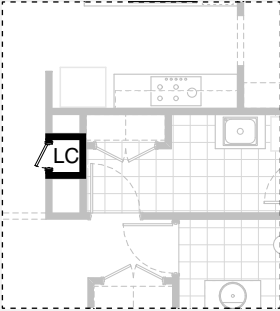
INTERNAL OPTIONS



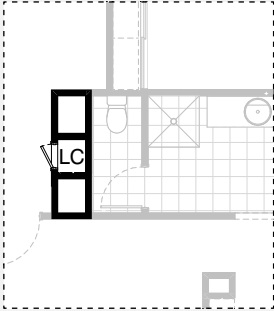
IN01



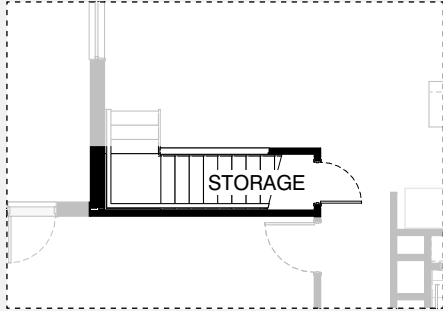
IN02



IN03



FIRST FLOOR

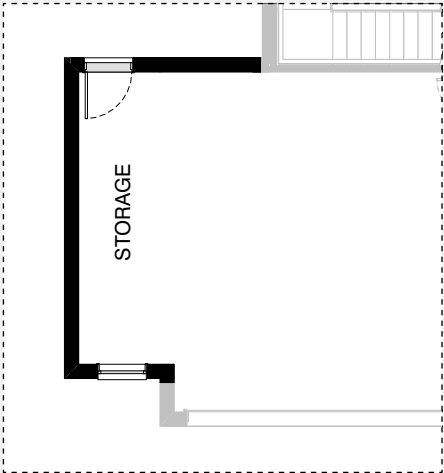


IN04

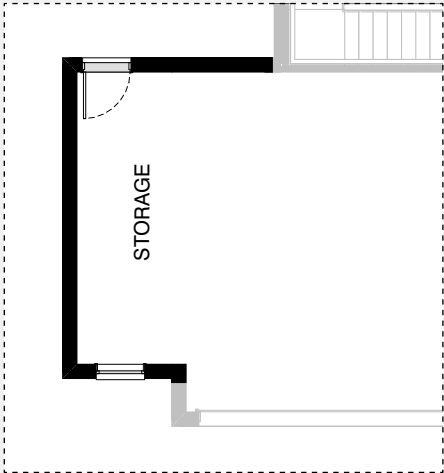
GROUND FLOOR



GARAGE OPTIONS



G01



G02

FAIRMOUNT 28

OPTION DESCRIPTIONS

Kitchen Option 01

Provide 'L' shape Kitchen Upgrade and delete W.I.P to suit.
Provide 1200mm wide island bench,
1No. laminated MW provision with pot drawer below,
1No. 900mm base cabinets,
1No. laminated DW provision,
1No. 450mm drawer unit,
1No. 900mm corner base cabinet,
1No. 300mm base cabinet,
1No. 700mm base cabinet,
2No. 800mm laminated pantry units,
open shelf above refrigerator space,
1No. 900mm under bench oven & cooktop with
1No. 900mm retractable rangehood above,
2No. 700mm overhead cabinets,
1No. 600mm overhead cabinet,
1No. 900mm overhead cabinet,
1No. 600mm corner overhead cabinet and
1No. 514mm x 2410mm aluminium fixed window with
no bottom reveal in lieu of standard window
with additional tiled splashback and benchtop to suit.
Note: Meals window moves 240mm towards the rear of the house.

Kitchen Option 02

Provide Kitchen / W.I.P Upgrade with
2No. 800mm pot drawers,
1No. 900mm underbench oven with 1No. 900mm cooktop and
1No. 900mm retractable rangehood above.
Provide additional 1No. 350mm base cabinet,
2No. 800mm overhead cabinets,
1No. 350mm overhead cabinet,
open shelf above refrigerator space,
1No. 600mm laminated overhead open shelf,
1No. 450mm drawer unit,
1No. laminated DW provision,
1No. 900mm base cabinet,
1No. laminated MW provision,
2No. 800mm base cabinets, 1800(h) laminated shelving,
1No. 1200mm x 1450mm aluminium fixed window with

Kitchen Option 03

Provide additional 1No. 800mm base cabinet with
1No. 800mm laminated open shelf above to
rear of island bench.
Note: This Option can only be used with Option Kitchen02

Laundry Option 01

Provide Laundry Upgrade with,
2No. 800mm base cabinets with inset trough,
2No. 800mm overhead cabinets and
additional tiled splashback and benchtop to suit.

Ensuite Option 01

Provide Ensuite upgrade with
wall to wall tiled shower base and
1782mm double vanity in lieu of standard.
Relocate WC to suit.
Note: Window to be moved towards the front of the house by 240mm.

Internal Option 01

Provide Guest Bedroom in lieu of Living.
Provide additional 1No. 870mm flush panel hinged door and
site built plaster lined robe with hanging rail/shelf and sliding doors.
Provide Powder with
1No. 900mm x 900mm tiled shower base and
682mm wide vanity unit in lieu of standard.
Laundry reduces by 110mm with Kitchen, WIP & Laundry
move towards rear of house by 110mm, reducing Meals to suit.

Internal Option 02

Provide dressing table option with 32mm laminated benchtop,
2No. 450mm wide laminated drawer / shelving units,
mirror and 300mm plastered bulkhead above.

Internal Option 03

Provide Laundry chute to Ground floor and First floor in lieu of void.
Note: Choosing this option removes the existing Linen on First floor

Internal Option 04

Provide Storage room below stair including 720mm flush panel hinged door,
plaster lined walls and raked plaster ceiling on battens with square set
cornice including.
Note: Flooring not included

Garage Option 01

Provide extension to Garage to create
additional Storage area.
1No. 1800mm x 850mm aluminium fixed window
Increases area by 9.48m².
Increases width by 1680mm.

Garage Option 02

Provide extension to Garage to create
additional Storage area.
1800mm x 850mm aluminium fixed window
Increases area by 10.83m².
Increases width by 1920mm.

