



**FLOORPLAN OPTIONS**

We personalise our floorplans. Talk to us about our huge range of ready-to-go design options.

Listed details based on Traditional facade floorplan (illustrated)

**Facades available:**

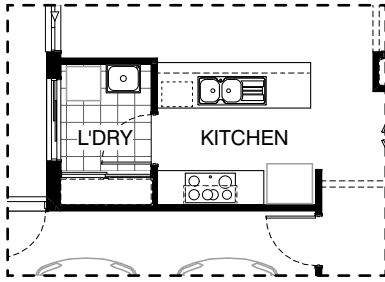
Coastal, Delta, Kingston, Nouveau  
Salisbury, Traditional, York

**Overall home width** 11,390mm

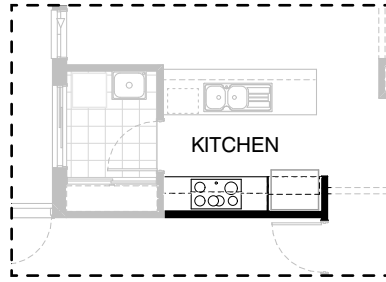
**Overall home length** 18,350mm

Residence	135.8m <sup>2</sup>	14.6sq
Garage	37.4m <sup>2</sup>	4.0sq
Porch	3.8m <sup>2</sup>	0.4sq
Alfresco	9.4m <sup>2</sup>	1.0sq
<b>Total</b>	<b>186.4m<sup>2</sup></b>	<b>20.1sq</b>

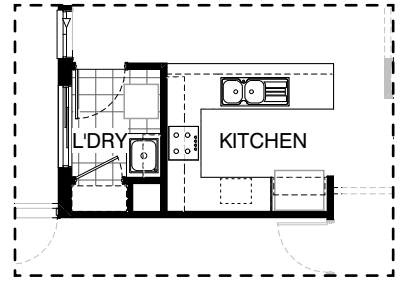
\*Copyright conditions. All photos and illustrations are representative only. Floor plans and specifications may be varied by Burbank without notice, the dimensions are diagrammatic only and a Building Contract with final drawings will display correct dimensions and detail. All designs are the property of Burbank and must not be used, reproduced, copied or varied, wholly or in part without written permission from an authorised Burbank representative. Copyright Burbank Australia (QLD) Pty Ltd. ABN 77 103 014 615. QBCC 1046544.



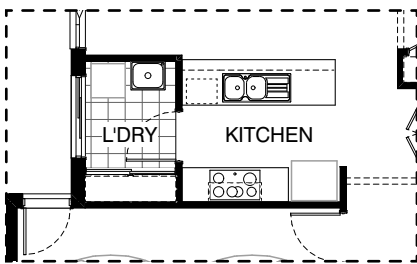
Master Kitchen



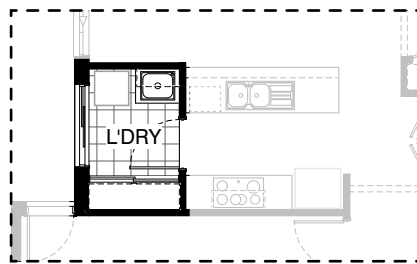
**K01**



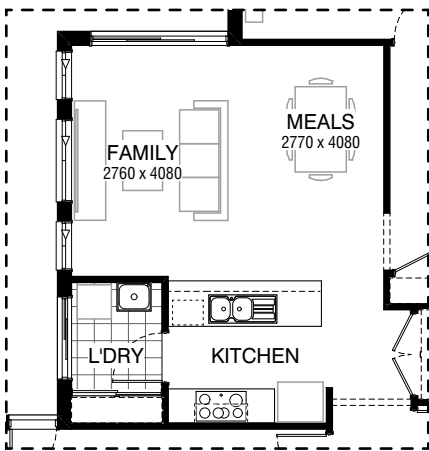
**K02**



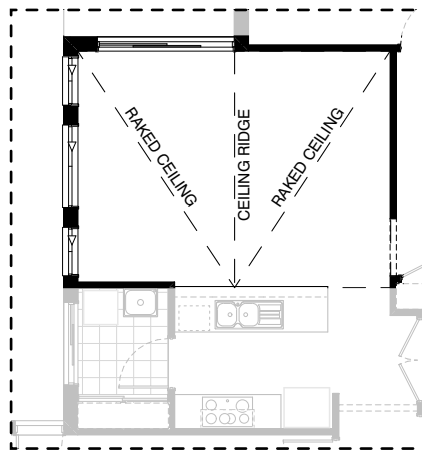
Master Laundry



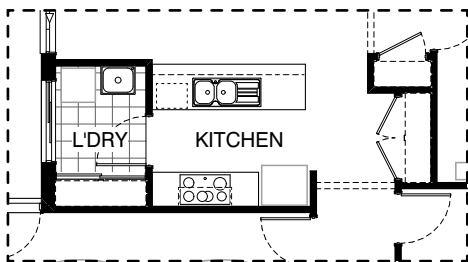
**LD01**



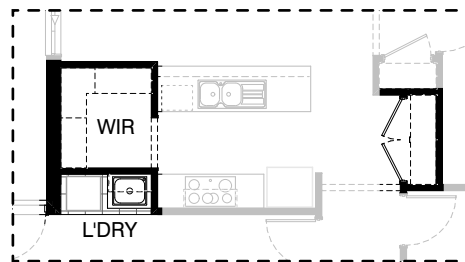
Master Family Meals



**IN01**



Master Laundry / WIP



**IN02**

\*Copyright conditions. All photos and illustrations are representative only. Floor plans and specifications may be varied by Burbank without notice, the dimensions are diagrammatic only and a Building Contract with final drawings will display correct dimensions and detail. All designs are the property of Burbank and must not be used, reproduced, copied or varied, wholly or in part without written permission from an authorised Burbank representative. Copyright Burbank Australia (QLD) Pty Ltd. ABN 77 103 014 615. QBCC 1046544.

**OPTION DESCRIPTIONS****K01 - Kitchen Option 01**

Provide Kitchen upgrade option, including:  
1No. open shelf over Ref space,  
2No. 450mm overhead cupboards either side of rangehood.

**K02 - Kitchen Option 02**

Provide U-shaped Kitchen upgrade option, including:  
additional bench top and tiled splashback,  
900mm retractable rangehood,  
600mm under bench oven and cooktop,  
dishwasher provision,  
microwave provision with pot drawer beneath,  
450mm drawer unit,  
1No. 900mm base cupboard,  
2No. 900mm corner base cupboards with bi-fold doors,  
1No. 300mm base cupboard,  
2No. 700mm overhead cupboards,  
1No. open shelf over Ref space.  
870mm hinged Laundry door moves to Meals as shown.  
Provide additional bench top, base and  
overhead cupboards to Laundry, including:  
stainless steel trough,  
1No. 700mm base cupboard,  
1No. 700mm overhead cupboard.  
Linen cupboard decreases in size with  
820mm hinged door in lieu of sliding doors.

**LD01 - Laundry Option 01**

Provide Laundry upgrade option with additional bench top, base and  
overhead cupboards, including:  
stainless steel trough,  
1No. 700mm base cupboard,  
1No. 700mm overhead cupboard.

**IN01 - Internal Option 01**

Provide raked ceiling (including square set cornice) with internal ridge to  
Kitchen, Meals & Family.

**IN02 - Internal Option 02**

Provide floor plan option converting existing Laundry into Walk-in Pantry  
with 4No. 450mm shelves.  
Provide smaller open Laundry space facing Garage with additional bench  
top, base and overhead cupboards, including:  
stainless steel trough,  
1No. 700mm base cupboard,  
1No. 700mm overhead cupboard.  
Existing Pantry becomes Linen closet.  
Remove 870mm hinged door and  
replace with bulkhead.  
Remove ASD2115 sliding door.