

VIEWCREST 27

🏠 4 🚗 3 🚗 2

Total squares 26.9sq



Minimum Lot Width
12.5m

Minimum Lot Length
25.0m



Design Dimensions
11,030mm(W) x 17,750mm(L).

Facade Choices
Fullerton, Huntington, Moorpark,
Oakwood, Palisades, Redlands, Riverside.
Details based on Riverside façade floorplan (Illustrated)

DESIGN DIMENSIONS

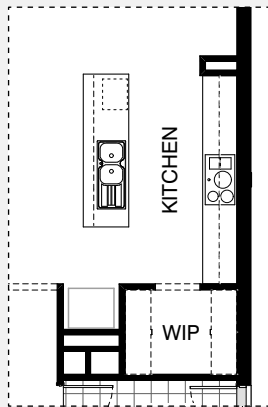
Residence	208.9m ²	22.5sq
Garage	38.6m ²	4.2sq
Porch	2.3m ²	0.2sq
Total	249.8m²	26.9sq



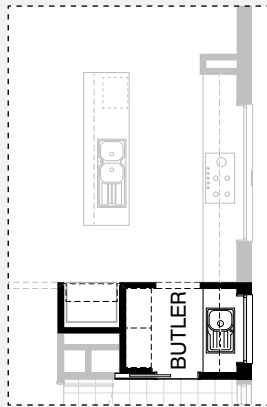
*Copyright conditions. All photos and illustrations are representative only. Floor plans and specifications may be varied by Burbank without notice, the dimensions are diagrammatic only and a Building Contract with final drawings will display correct dimensions and detail. All designs are the property of Burbank and must not be used, reproduced, copied or varied, wholly or in part without written permission from an authorised Burbank representative. Copyright Burbank Australia Pty Ltd. ABN 91 007 099 872. Builders Registration Number CDB-U-52603.



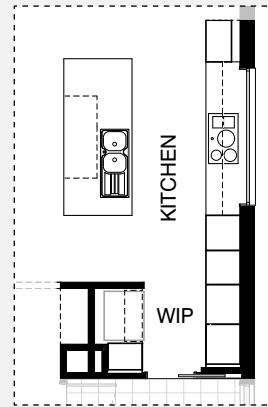
KITCHEN OPTIONS



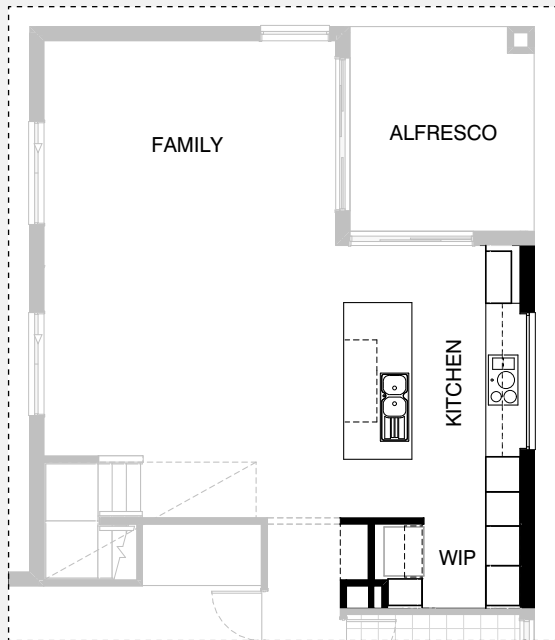
Master Kitchen Design



K01

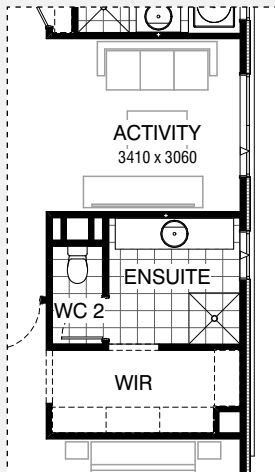


K02

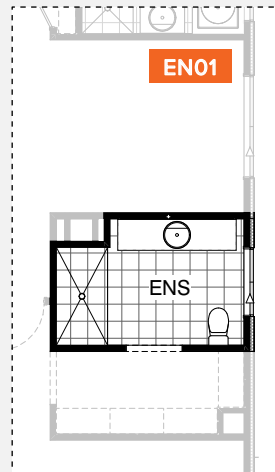


K03

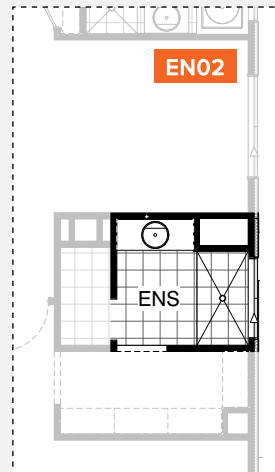
ENSUITE OPTIONS



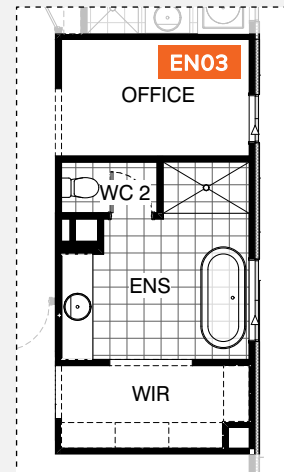
Master Ensuite Design



EN01



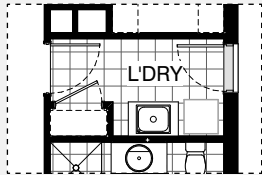
EN02



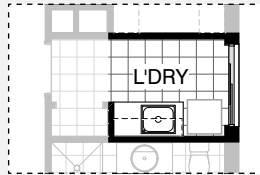
EN03



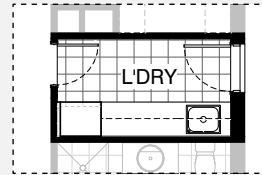
LAUNDRY OPTIONS



Master Laundry Design

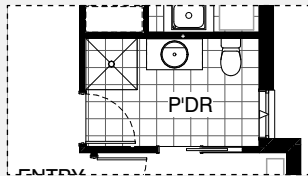


LD01

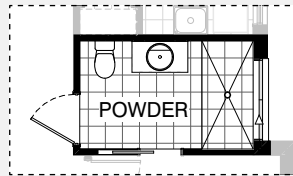


LD02

INTERNAL OPTIONS



Master Powder Design

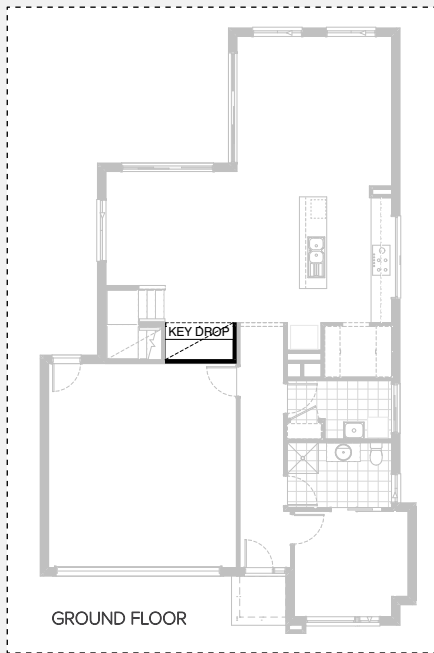


IN01

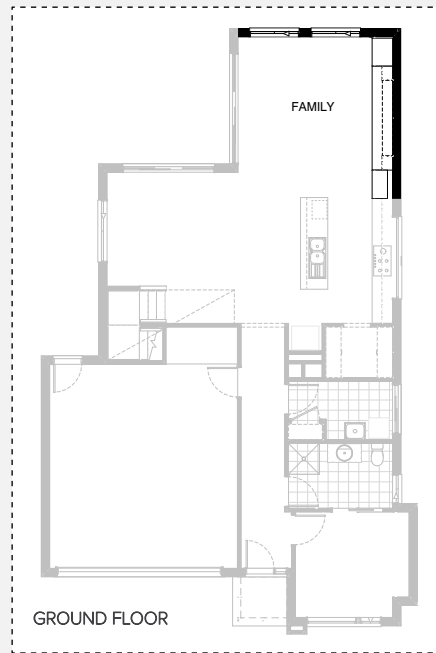


IN02

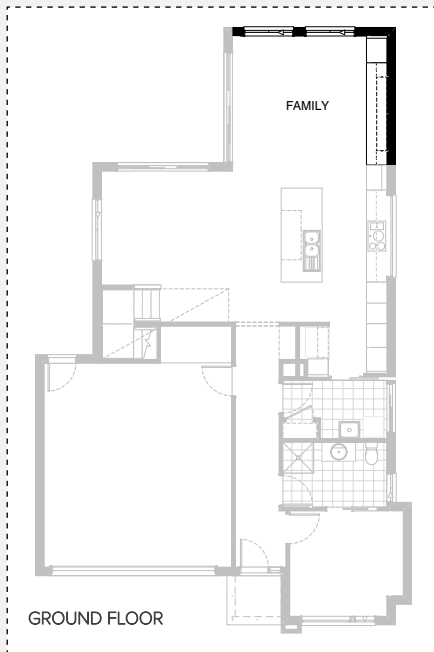
INTERNAL OPTIONS



IN03

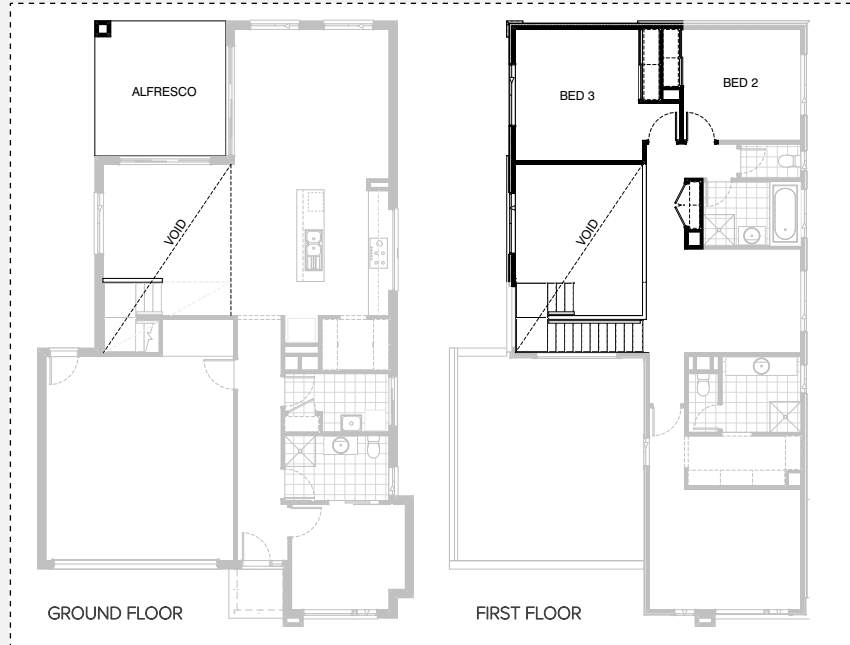


IN04

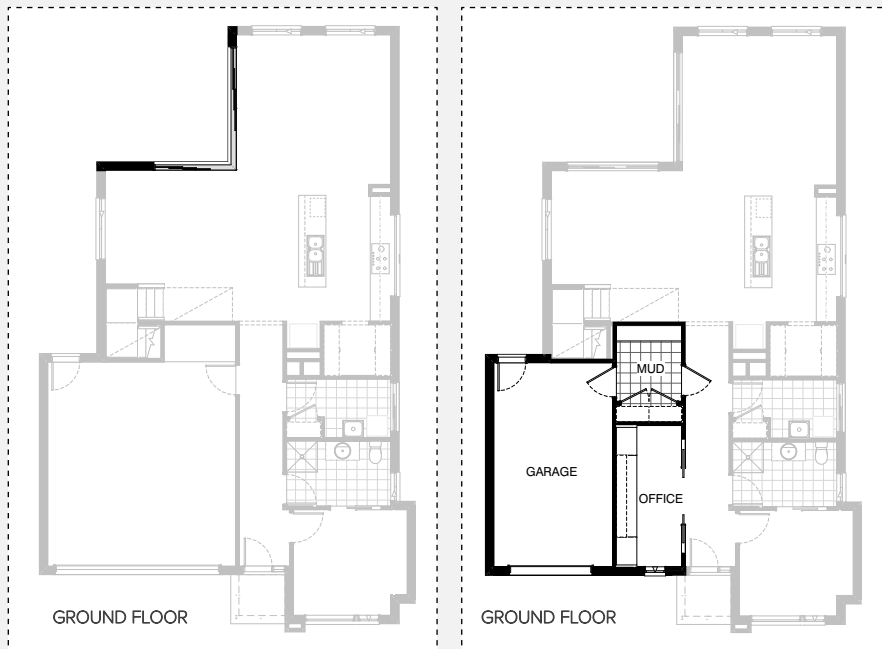


IN05

INTERNAL OPTIONS



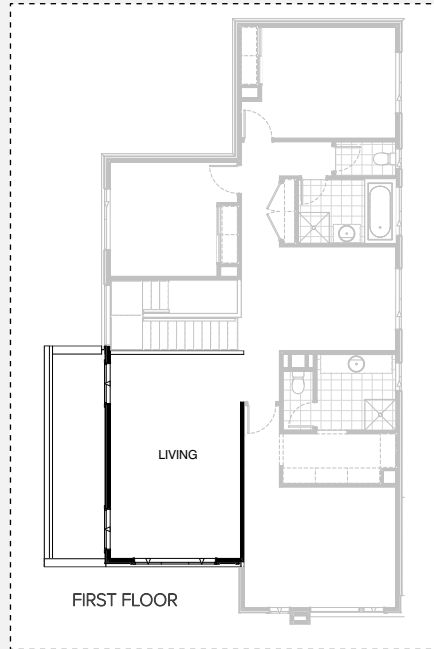
IN06



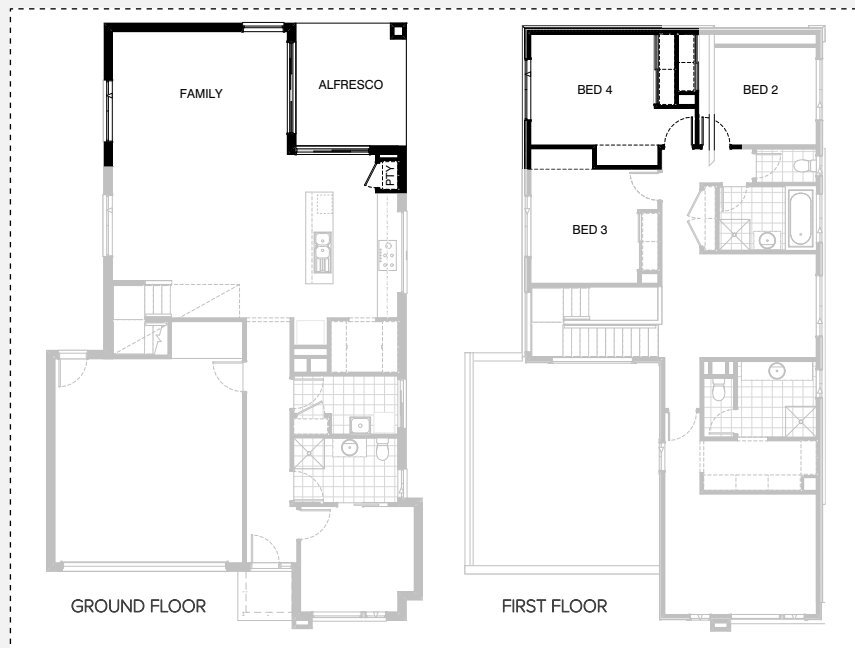
IN07

IN08

INTERNAL OPTIONS

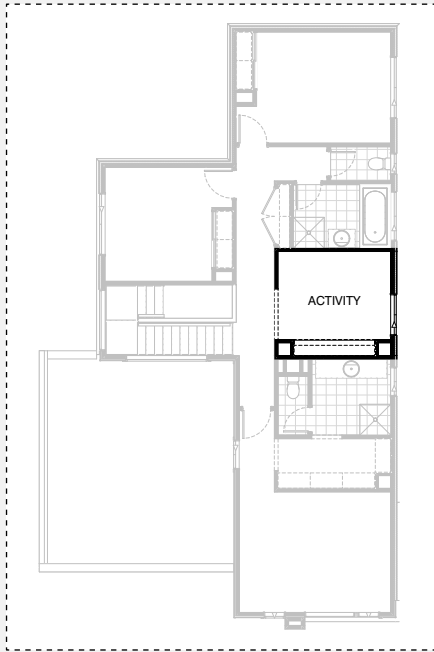


IN09

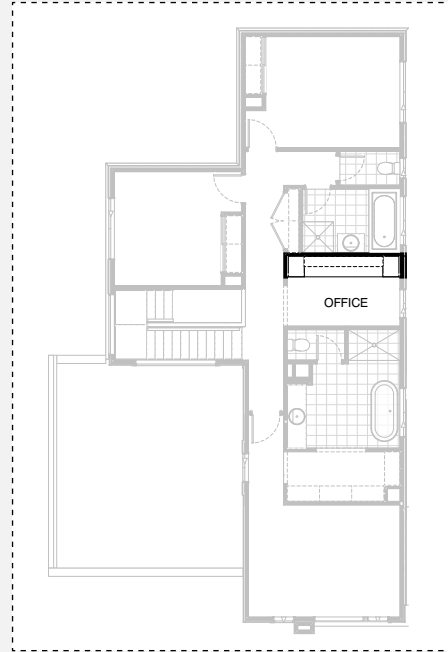


IN11

INTERNAL OPTIONS



IN12

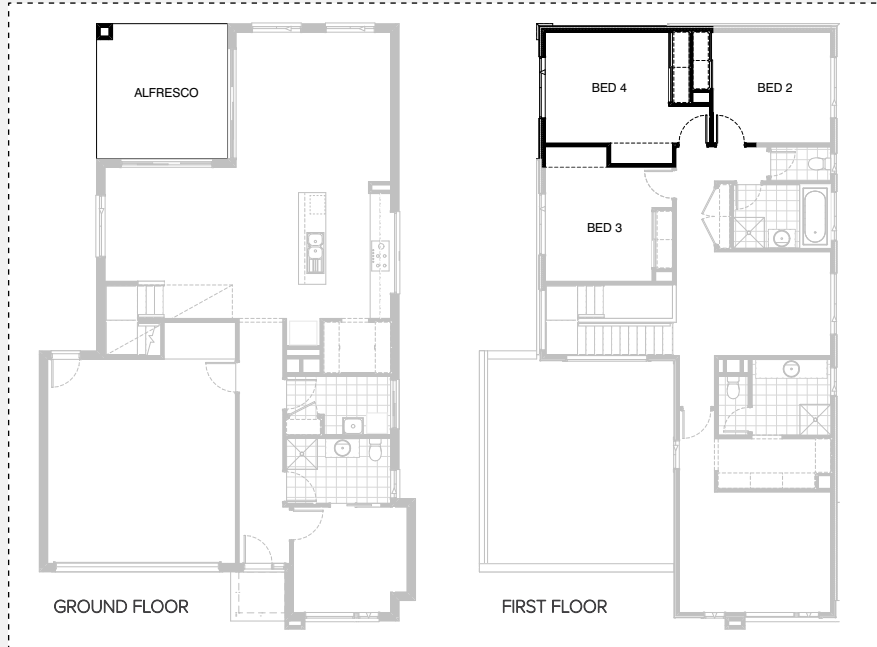


IN13



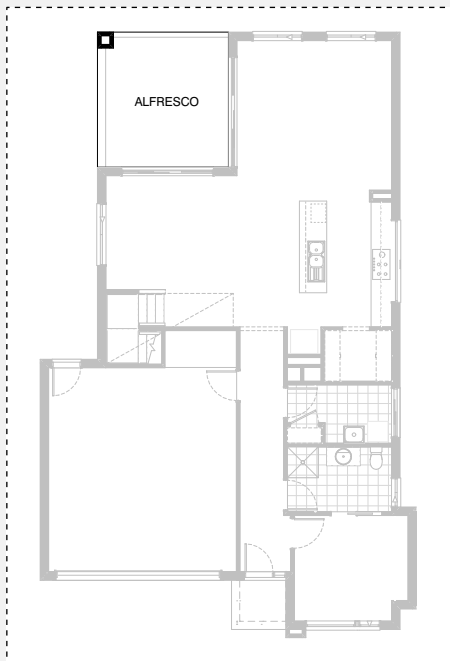
IN14

INTERNAL OPTIONS



IN15

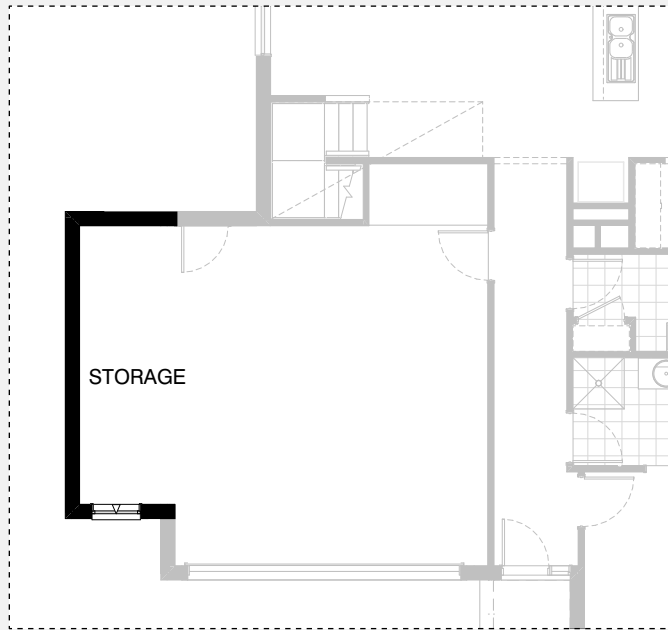
EXTERNAL OPTION



EX01



GARAGE OPTIONS



G01

VIEWCREST 27

OPTION DESCRIPTIONS

Kitchen Option 01

Provide Butler's Pantry in lieu of Walk-in Pantry, including:
20mm stone benchtop,
single bowl sink,
1No. 900mm base cupboard,
1No. 450mm base cupboard,
1No. 900mm overhead cupboard,
1No. 450mm overhead cupboard,
1No. Open shelf over Ref space,
1No. 720mm cavity sliding door through to Laundry with additional 514mm x 1210mm aluminium fixed window with no bottom reveal

Kitchen Option 02

Provide Kitchen upgrade option with 1200mm deep island bench and relocated Ref space, including:
1No. 900mm retractable rangehood and cooktop,
1No. 450mm drawer unit,
1No. dishwasher provision,
4No. 900mm base cupboards,
1No. 700mm base cupboard,
2No. 600mm base cupboards facing Meals,
2No. 900mm overhead cupboards,
2No. 600mm oven towers with microwave provisions,
1No. open shelf over Ref space,
2No. 700mm full height laminate cupboards,
1No. 700mm full height laminate cupboard (450mm deep),
1No. 450mm full height laminate cupboard beside Ref space,
1No. 820mm cavity sliding door through to Laundry.
Provide Alcove facing Passage with bulkhead over.

Kitchen Option 03

Provide Kitchen upgrade option with 1200mm deep island bench and relocated Ref space, including:
1No. 900mm retractable rangehood above and cooktop,
1No. 450mm drawer unit,
1No. dishwasher provision,
4No. 900mm base cupboards,
1No. 700mm base cupboard,
2No. 600mm base cupboards facing Meals,
2No. 900mm overhead cupboards,
2No. 600mm oven towers with microwave provisions,
1No. open shelf over Ref space,
2No. 700mm full height laminate cupboards,
1No. 900mm full height laminate cupboard (434mm deep),
1No. 450mm full height laminate cupboard beside Ref space,
Note: Option only available with Internal11 or Internal14

Ensuite Option 01

Provide Ensuite upgrade option with re-arranged layout, including:
1No. 2082mm vanity, 1720mm x 900mm wall-to-wall tiled shower base,
1No. 1029mm x 1210mm aluminium awning window in lieu of standard,
Relocated WC.

Ensuite Option 02

Provide Ensuite upgrade option, including:
1No. 1282mm vanity, with 1 row tiling beneath mirror to suit wall-to-wall benchtop including returns
1650mm x 900mm wall-to-wall tiled shower base,
1No. 350mm x 1450mm aluminium fixed window over shower in lieu of standard

Ensuite Option 03

Provide Ensuite upgrade option with re-arranged layout, including:
1No. 1782mm vanity, including 1 row tiling beneath mirror to suit wall-to-wall benchtop including returns,
1510mm x 900mm wall-to-wall tiled shower base,
1No. 1780mm freestanding bath,
1No. 1200mm x 1450mm aluminium awning window in lieu of standard,

Enclosed WC with 720mm hinged door.

Note:

Option provides a Home Office in lieu of Activity with 1800mm x 850mm aluminium awning window and bulkhead as shown
Bed 1 reduces by 250mm to accommodate.

Laundry Option 01

Provide Laundry upgrade with laminate base and overhead cupboards and inset trough, including:
1No. 800mm base cupboard,
1No. 350mm base cupboard,
1No. 800mm overhead cupboard,
1No. 350mm overhead cupboard,
32mm laminate benchtop and tiled splashback to suit.

Laundry Option 02

Provide Laundry upgrade with laminate base and overhead cupboards and inset trough, including:
1No. 900mm base cupboard,
2No. 900mm overhead cupboards,
1No. 450mm overhead cupboard,
1No. 700mm full height laminate cupboard with 5No. 450mm shelves,
32mm laminate benchtop and tiled splashback to suit.
Bench height increases to 950mm from FFL with open space beneath benchtop to store washer and dryer side-by-side.
Provide 820mm hinged entry door in lieu of standard sliding door.
Remove plaster-lined Linen cupboard.

Internal Option 01

Provide upgrade option to Guest Ens/Pdr, including:
swapped location of shower and WC,
1900mm x 900mm tiled shower base with 350mm x 1450mm aluminium fixed window over in lieu of standard.
Note:
Hinged and cavity sliding door flipped.

Internal Option 02

Provide Lounge to the front of the home in lieu of Guest bedroom and remove hinged door.
Provide 2057mm x 1210mm aluminium fixed window to Lounge as shown.
Remove shower and cavity sliding door from Powder and provide 782mm vanity in lieu of standard.
Provide 1029mm x 610mm aluminium awning window in lieu of standard.
Provide Coats cupboard to Entry passage with 820mm hinged door and 450mm shelf with hanging rail.
Note: Provide 870mm hinged door and 900mm x 900mm tiled recessed shower to Bath in lieu of standard.

Internal Option 03

Provide Key drop facing the Meals in lieu of Storage area to Garage, with built-in joinery, including:
600mm deep 32mm thick laminate desk,
1No. 450mm wide drawer unit under desk.

Internal Option 04

Provide built-in joinery option to Family, including:
600mm deep 32mm thick benchtop,
2No. 800mm T.V units,
2No. 700mm T.V units,
1No. 800mm (450mm deep) full height laminate cupboard,
1No. 800mm full height laminate cupboard,
2No. 400mm open shelf units,
2No. 300mm deep 60mm thick open shelves over.
Note:
Remove stud and plaster-lined plumbing stack.
Provide new plumbing stack behind 450mm deep laminate cupboard.
Family windows spaced to suit floor plan option

VIEWCREST 27

OPTION DESCRIPTIONS

Internal Option 05

Provide built-in joinery option to Family, including:

600mm deep 32mm thick benchtop,
2No. 800mm T.V units,
2No. 700mm T.V units,
1No. 700mm full height laminate cupboard,
2No. 400mm open shelf units,
2No. 300mm deep 60mm thick open shelves over.

Note:

Option only available with Option Kitchen02
Family windows spaced to suit floor plan option

Internal Option 06

Provide Void over Meals area relocating
Bed 3 above and providing Alfresco with
470mm x 470mm brick pier and
structural concrete slab to Ground floor.

Increases area by 15.21m²

Provide an extension to the dwarf wall balustrade as shown.

Relocate heating stack to Linen closet with

2No. 620 hinged doors in lieu of standard.

Provide 1200mm x 1810mm aluminium fixed window
in lieu of standard to new Void.

Internal Option 07

Provide 2107mm x 3610mm x 2410mm aluminium corner
stacker sliding door in lieu of 2No. standard sliding doors.

Note: Include in pricing, 3No. 89mm x 89mm steel posts with
steel beams to engineer's design.

Internal Option 08

Provide Home Office / Mud room option with single car Garage
in lieu of double Garage, including:

Tiled Mud room with 870mm hinged door,

1No. built-in Linen cupboard with

2No. 820mm hinged doors and 4No. 450mm shelves

450mm deep 32mm thick benchtop

2No. 900mm T.V units under benchtop.

Home Office built-in joinery includes:

1No. 600mm deep 32mm thick laminate desk,

2No. 800mm full height laminate Storage cupboards,

2No. 300mm deep 60mm thick open shelves over desk,

2No. 820mm bi-parting cavity sliding doors,

1No. 2057mm x 610mm aluminium awning feature window.

Provide 1No. 2410mm wide Garage door to

new single Garage in lieu of standard

Internal Option 09

Provide Additional Living area to First floor

by building over the Garage, including:

2No. 1200mm x 1210mm aluminium awning windows

1No. 1200mm x 2410mm aluminium awning window

in lieu of standard.

Provide 1020(h) plaster-lined dwarf wall balustrade.

Note: Include in pricing, 3No. 89x89mm steel posts with
steel beams to engineer's design.

Internal Option 11

Provide mirrored Family/Alfresco, including:

2095mm x 2690mm aluminium sliding door in lieu of standard

2095mm x 2170mm aluminium sliding door,

1200mm x 1210 aluminium fixed window in lieu of standard

2No. 1200mm x 1450mm aluminium awning windows,

additional 1800mm x 1810mm aluminium awning window,

Provide plaster-lined Pantry with 720mm hinged door and

4No. 450mm shelves,

Provide additional 470mm x 470mm brick pier with
structural concrete slab to new Alfresco.

Increases area by 15.21m²

Provide additional Bedroom to First floor, including:

Additional built-in Robe with sliding doors and

450mm shelf with hanging rail,

1No. 1200mm x 1810mm aluminium awning window,

2No. Study Nooks to Bed 3 and 4 with bulkheads over.

Note: Option takes 490mm from Bed 2 to accommodate

Internal Option 12

Provide built-in joinery to Activity to first floor, including:

450mm deep 32mm thick benchtop,

2No. 800mm T.V units,

1No. 700mm T.V unit,

2No. 300mm deep 60mm thick open shelves over,

2No. plaster-lined voids with bulkhead over.

Provide 2057mm x 1210mm aluminium awning window
in lieu of standard.

Internal Option 13

Provide built-in joinery to Home Office, including:

600mm deep 32mm thick desk top

2No. 450mm full height laminate cupboard,

2No. 300mm deep 60mm thick shelves over desk

Note: Option only available with option Ensuite03

Internal Option 14

Provide Provide mirrored Family and additional Alfresco, including:

Mirror the Family area and provide Alfresco (11.66m²) to the side of Family
including

additional 470mm x 470mm brick pier and structural concrete slab.

Extend Family area by 3.54m² & add 15.21m² to First floor.

Provide 2095mm x 2690mm aluminium sliding door and

2095mm x 2170mm aluminium sliding door to Alfresco in lieu of standard.

Provide 1200mm x 1210mm aluminium fixed window in lieu of standard

1no. 1800mm x 1810mm aluminium awning window in lieu of standard.

Provide plaster-lined build in Pantry with 720mm hinged door and 4No.

450mm shelves.

Provide Void over Meals area and relocate

Bed 3 to new First floor extension to accommodate new Void.

Delete heating void and extend Bedroom 3 robe.

Provide 1800mm x 1810mm aluminium fixed window to Void.

Reduce first floor Linen cupboard and provide heating void.

Provide plaster lined dwarf wall to first floor Void.

Note: Include in pricing; 3No. 89mm x 89mm steel posts with steel beams as
designed by engineer.

Internal Option 15

Provide Alfresco with additional

470mm x 470mm brick pier and structural concrete slab.

Adds 15.21m² to the ground floor area of the home.

Provide additional Bedroom to first floor, including:

Additional built-in Robe with sliding doors and

450mm shelf with hanging rail,

1No. 1200mm x 1810mm aluminium awning window,

2No. Study Nooks to Bed 3 and 4 with bulkheads over.

Note: Option takes 490mm from Bed 2 to accommodate

External Option 01

Provide Alfresco with additional

470mm x 470mm brick pier,

structural concrete slab and tiled roof over.

Adds 15.21m² to the total floor area of the home.

Garage Option 01

Provide extension to Garage to create additional

Storage area including additional

2057mm x 850mm aluminium awning feature window

Increases width of the home by 1680mm.

Increases area of the home by 9.07m²

