

FAIRVIEW 42

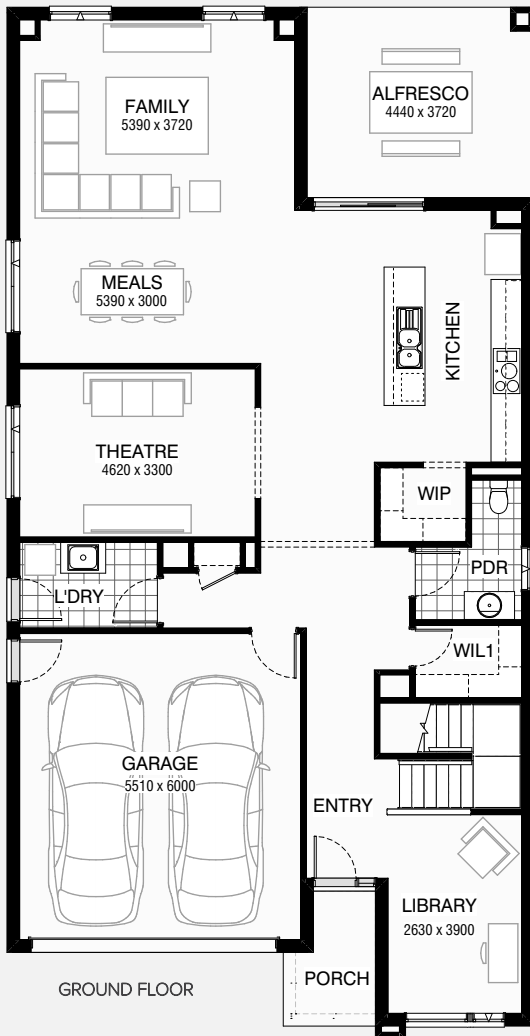
🏠 4 🛋️ 2.5 🚗 2

Total squares 41.6sq

B
SERIES

Minimum Lot Width
14.0m

Minimum Lot Length
28.0m



Design Dimensions
10,310mm(W) x 20,150mm(L).

Facade Choices
Fullerton, Huntington, Moorpark,
Oakwood, Palisades, Redlands, Riverside.
Details based on Riverside façade floorplan (Illustrated)

DESIGN DIMENSIONS

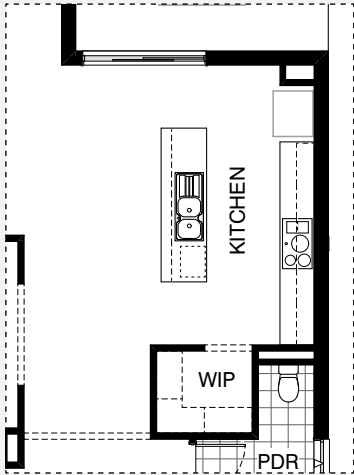
Residence	329.7m ²	35.5sq
Garage	36.2m ²	3.9sq
Porch	4.0m ²	0.4sq
Alfresco	16.5m ²	1.8sq
Total	386.5m²	41.6sq

Burbank

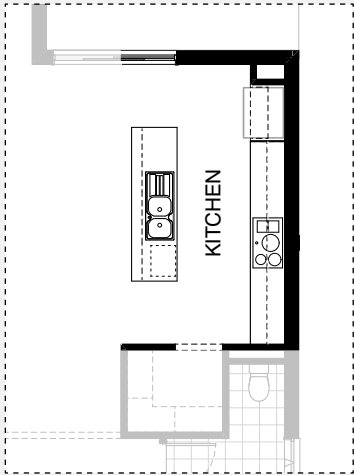
*Copyright conditions. All photos and illustrations are representative only. Floor plans and specifications may be varied by Burbank without notice, the dimensions are diagrammatic only and a Building Contract with final drawings will display correct dimensions and detail. All designs are the property of Burbank and must not be used, reproduced, copied or varied, wholly or in part without written permission from an authorised Burbank representative. Copyright Burbank Australia Pty Ltd. ABN 91 007 099 872. Builders Registration Number CDB-U-52603.



KITCHEN OPTIONS

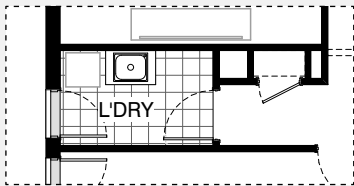


Master Kitchen Design

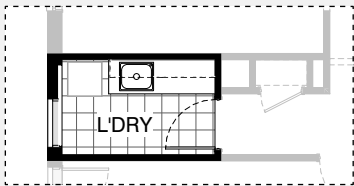


K01

LAUNDRY OPTION

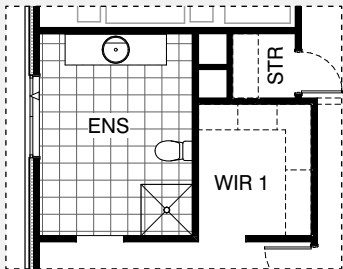


Master Laundry Design

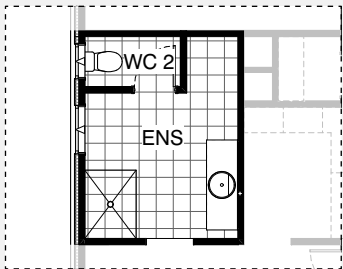


LD01

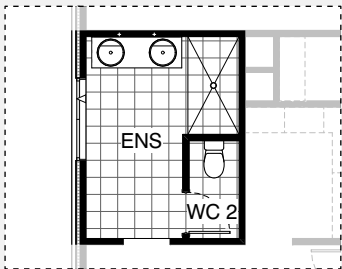
ENSUITE OPTIONS



Master Ensuite Design

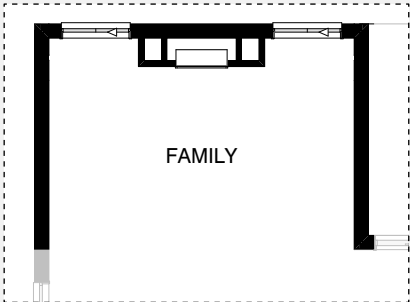


EN01



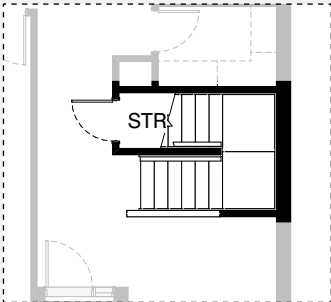
EN02

INTERNAL OPTIONS



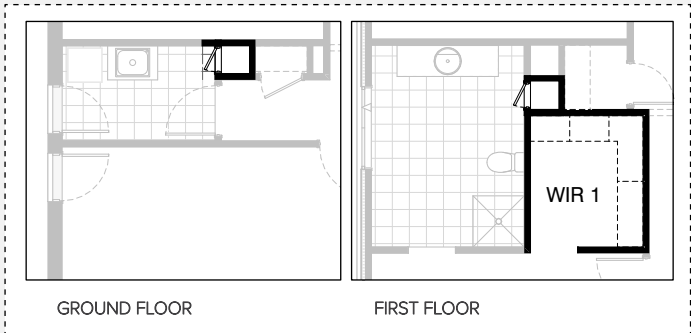
GROUND FLOOR

IN01



GROUND FLOOR

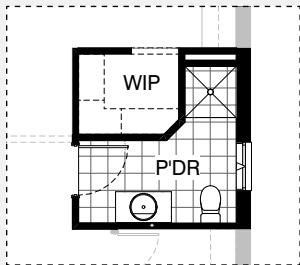
IN02



GROUND FLOOR

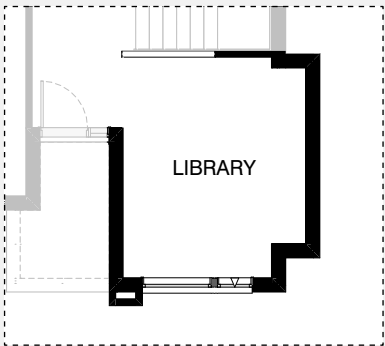
FIRST FLOOR

IN03



GROUND FLOOR

IN04



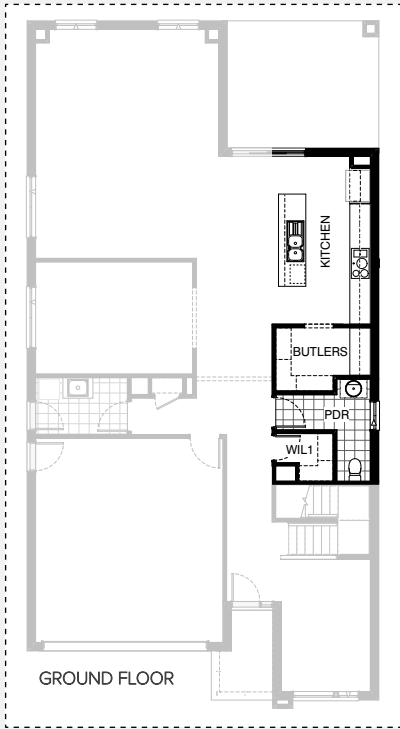
GROUND FLOOR

IN05

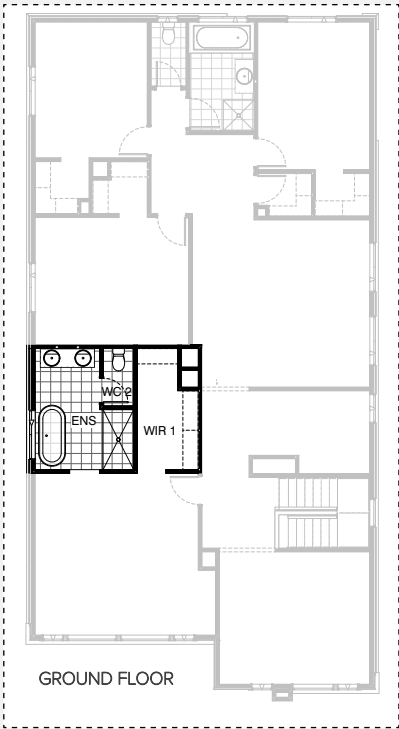
INTERNAL OPTIONS



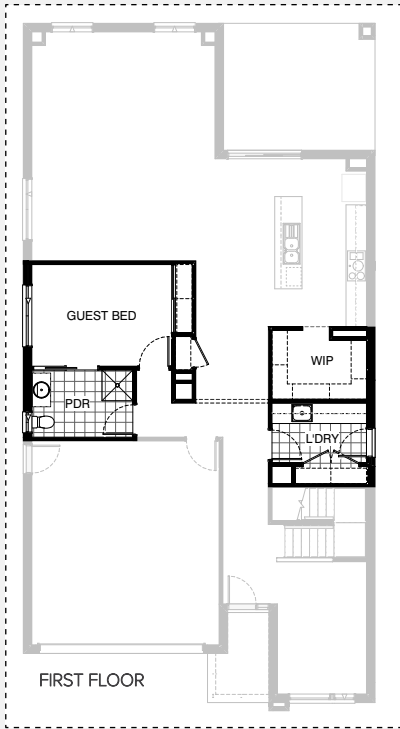
IN06



IN07



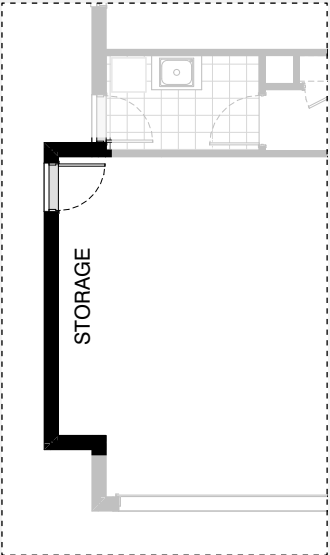
IN08



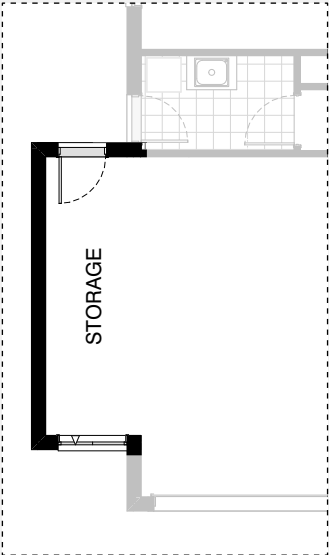
IN09



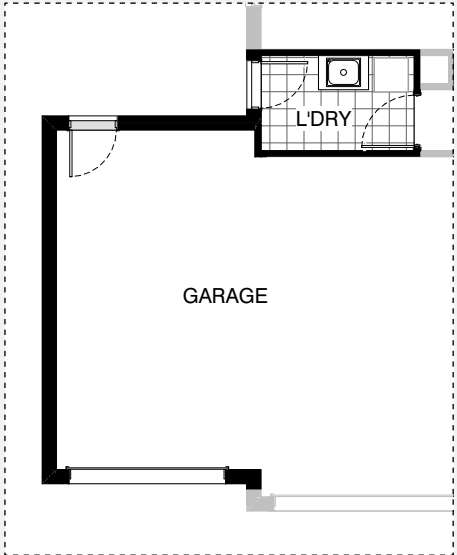
GARAGE OPTIONS



G01



G02



G03

FAIRVIEW 42

OPTION DESCRIPTIONS

Kitchen Option 01

Provide Kitchen Upgrade including:

- 1No. 900mm base cabinet,
- 2No. 700mm base cabinets,
- 1No. 600 base cabinet,
- 1No. 450mm drawer unit,
- 1No. 600mm pot drawers,
- 2No. 700mm overhead cabinets,
- 2No. 600mm overhead cabinets,
- 1No. laminated MW. provision with pot drawer below,
- 1No. laminated DW. provision with additional benchtop and tiled splashback to suit.
- 1No. 900mm underbench oven with 900mm cooktop & retractable rangehood above.
- 1No. open shelf above refrigerator space.

Laundry Option 01

Provide Laundry Upgrade with inset trough in 32mm laminated benchtop.

- 2No. 900mm base cabinets
- 2No. 900mm overhead cabinets and additional tiled splashback and benchtop to suit.

Note:- This Option not to be used with Option Garage03.

Ensuite Option 01

Provide Ensuite Upgrade including:

- additional site built plaster lined walls to WC with
- 1No. 720mm flush panel hinged door and
- 1No. 1029mm x 610mm aluminium awning window.
- 1No. 1200mm x 900mm tiled shower base.
- 1No. 1582mm vanity in lieu of standard and
- 1No. 1800mm x 850mm aluminium awning window in lieu of standard.

Ensuite Option 02

Provide Ensuite Option including additional site built plaster lined walls to WC with

- 1No. 720mm flush panel hinged door.
- 1No. wall to wall tiled shower base in lieu of standard.
- 1No. 1582mm vanity with 2No. basins in lieu of standard.

Note: Option Ensuite02 FF and Internal03 cannot be selected together.

Internal Option 01

Provide Real Flame Inspire 900 gas fireplace, 400mm off floor level in a 1400mm x 500mm boxed out plaster wall with a 4 sided black fascia to Family room rear wall with capped gas point. Relocate plumbing stack, void and

- 2No. Family room windows relocated to suit.

Internal Option 02

Provide Store room below stair including 720mm flush panel hinged door, plaster lined walls and raked plaster ceiling on battens with square set cornice.

Note:- Flooring not included

Internal Option 03

Provide Laundry chute.

Note: Option Internal03 cannot be selected with Ensuite02 FF and Option Internal08.

Internal Option 04

Provide Powder Upgrade with additional 900mm x 900mm recessed tiled shower base. Relocate hinged door, toilet and vanity to suit and increase W.I.P by 80mm and angle stud wall to suit.

Internal Option 05

Provide Library Option by extending Library wall width by 600mm with brick parapet & flat roof above. Increase area by 2.15m² Increases width by 600mm.

Internal Option 06

Provide Guest bedroom Option in lieu of Theatre including:

- 1No. sliding robe doors and plaster lined robe with
 - 1No. hanging rail and shelf.
- Relocate Laundry with Powder and provide additional
- 1No. 900mm x 900mm recessed tiled shower base,
 - 1No. 1029mm x 610mm aluminium awning window in lieu of standard,
 - 1No. 2057mm x 1810mm aluminium awning window in lieu of standard, and additional 1No. 920mm cavity sliding door.
- Relocate W.I.L and relocate Linen cupboard with
- 1No. 820mm flush panel hinged door in lieu of standard.
- Note: Option Internal06 and Option Internal07 cannot be selected together.

Internal Option 07

Provide Kitchen and Butlers Pantry Upgrade including reduce W.I.L and reconfigure Powder room including 782mm vanity unit in lieu of standard.

Increase W.I.P to create Butlers Pantry including additional 450mm wide shelving,

- 2No. 600 base cabinets,
 - 2No. 300mm overhead cabinets,
 - 1No. 700mm overhead cabinet,
- additional benchtop and tiled splashback to suit.

Provide Kitchen with 2No. 600mm,

- 4No. 800mm base cabinets,
- 1No. 450mm drawer unit,
- 2No. 600mm overhead cabinets,
- 2No. 700mm overhead cabinets,
- 1No. 900mm underbench oven with 900mm cooktop & retractable rangehood above.,
- 1No. open shelf above refrigerator space with 16mm laminated end panel.

Internal Option 08

Provide Ensuite Upgrade including re-location of heating stack and void to increase W.I.R.

Increase Ensuite by 200mm into W.I.R.

- Provide 1582mm wide vanity with 2No. basins,
- 1760mm x 900mm tiled shower base and
- 1780mm freestanding bath tub & relocate window over bath.

Provide separate WC with 720mm flush panel hinged door.

Note: Option Internal08 and Internal03 cannot be selected together.

Internal Option 09

Provide Guest bedroom Option in lieu of Theatre including additional

- 1No. sliding robe doors and plaster lined robe with
 - 1No. hanging rail and shelf.
- Relocate Laundry with Powder and provide additional
- 1No. 900mm x 900mm recessed tiled shower base,
 - 1No. 1029mm x 610mm aluminium window window in lieu of standard,
 - 1No. 2057mm x 1810mm aluminium awning window
 - 1No. 920mm cavity sliding door.

Remove W.I.L and relocate Linen cupboard with

- 1No. 820mm flush panel hinged door in lieu of standard.
- Increase Walk-in-Pantry and provide additional shelving to suit.

Provide Laundry upgrade with additional Linen including

- 4No. 450mm deep shelving,
- double 820mm doors,
- 1No. 400mm base cabinet,
- 1No. 900mm base cabinet,
- 3No. 900mm overhead cabinets and additional benchtop and splashback to suit.

Note: Option not available with Laundry01, Internal03, Internal04, Internal06, and Internal07

Garage Option 01

Provide extension to Garage to create

Storage area with 22.5° roof pitch

Increases area by 4.54m².

Increases width by 840mm.

FAIRVIEW 42

OPTION DESCRIPTIONS

Garage Option 02

Provide extension to Garage to create Storage area including:
2057mm x 1210mm aluminium awning feature window.
and 22.5° roof pitch
Increases area by 9.07m².
Increases width by 1680mm.

Garage Option 03

Provide triple car Garage including:
1 No. 2140mm x 2760mm Garage door as per
colour selection with brickwork above and
22.5° roof pitch.
Relocated Laundry door.
Increases area by 23.29m².
Increases width by 3600mm.
Note: This Option not to be used with Option Laundry01

