

KENWOOD 20

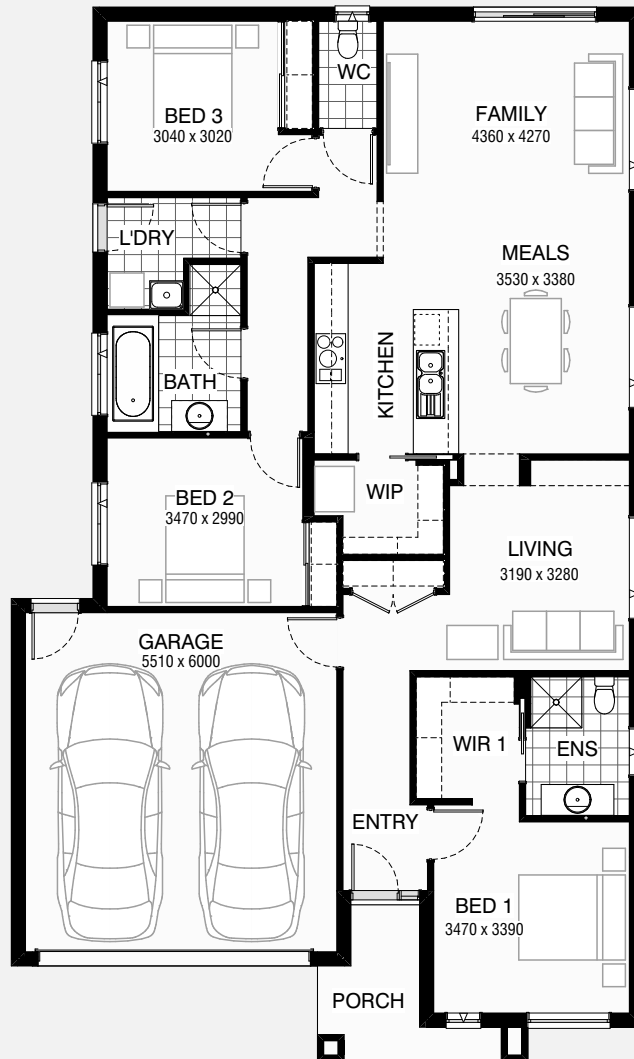
3 2 2

Total squares 19.6sq

B
SERIES

Minimum
Lot Width
12.5m

Minimum
Lot Length
25.0m



Design Dimensions
11,150mm(W) x 18,590mm(L).

Facade Choices
Brentwood, Glendale, Inglewood,
Malibu, Northridge, Pasadena, Santa Monica.
Details based on Inglewood façade floorplan (illustrated)

DESIGN DIMENSIONS

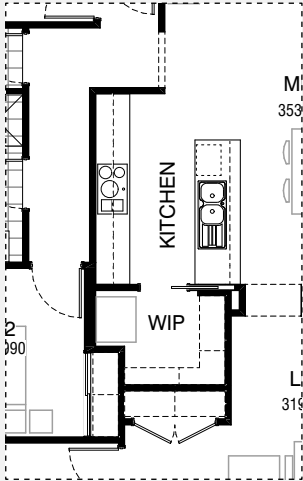
Residence	140.0m ²	15.1sq
Garage	36.5m ²	3.9sq
Porch	5.5m ²	0.6sq
Total	182.0m²	19.6sq

Burbank

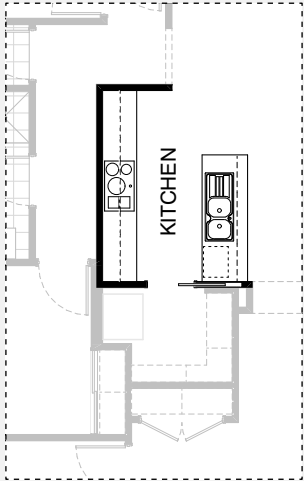
*Copyright conditions. All photos and illustrations are representative only. Floor plans and specifications may be varied by Burbank without notice, the dimensions are diagrammatic only and a Building Contract with final drawings will display correct dimensions and detail. All designs are the property of Burbank and must not be used, reproduced, copied or varied, wholly or in part without written permission from an authorised Burbank representative. Copyright Burbank Australia Pty Ltd. ABN 91 007 099 872. Builders Registration Number CDB-U-52603.



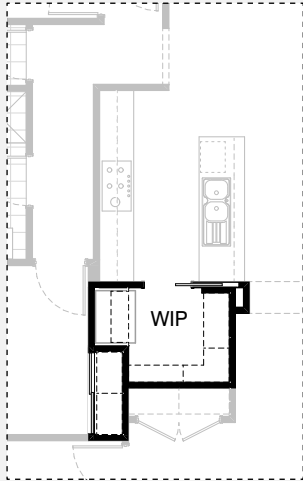
KITCHEN OPTIONS



Master Kitchen Design

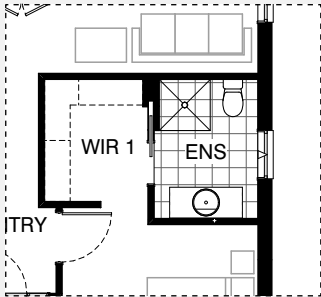


K1

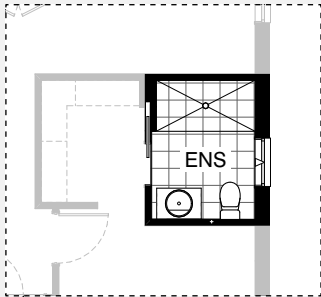


K2

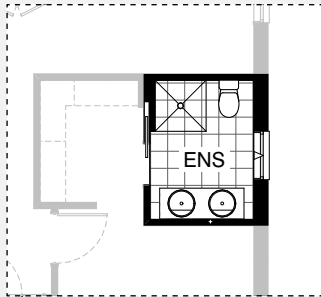
ENSUITE OPTIONS



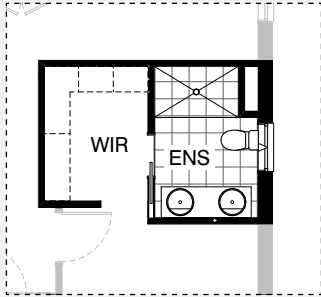
Master Ensuite Design



EN1



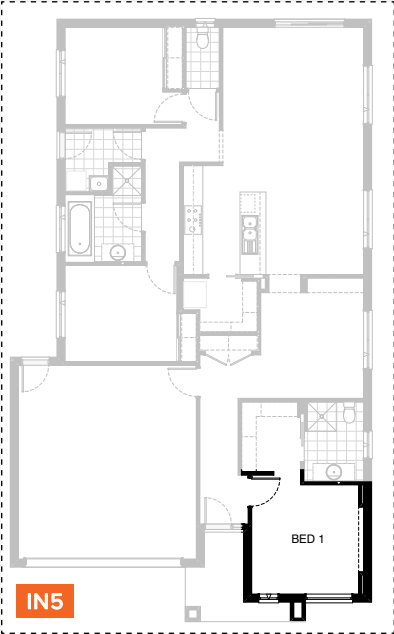
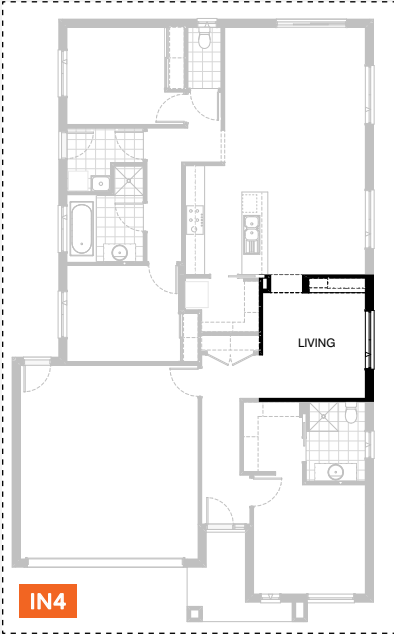
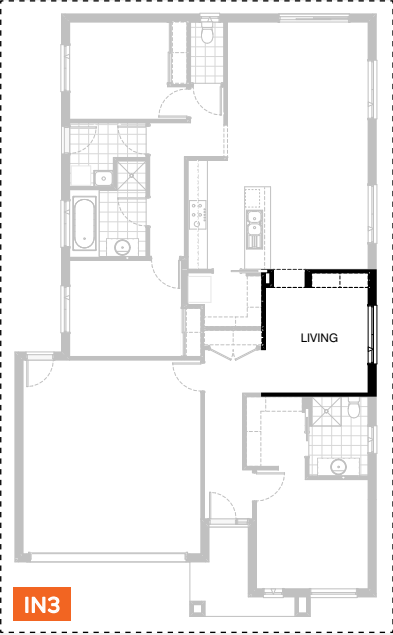
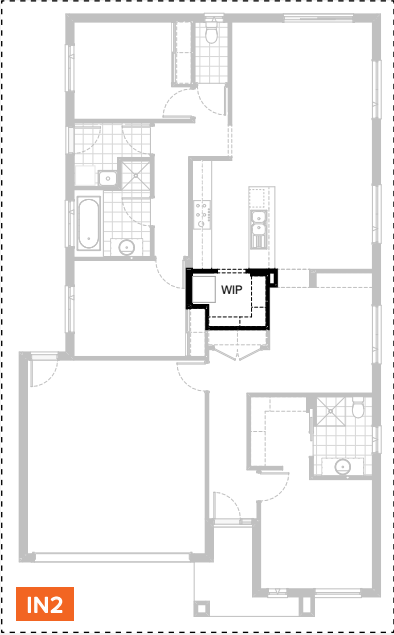
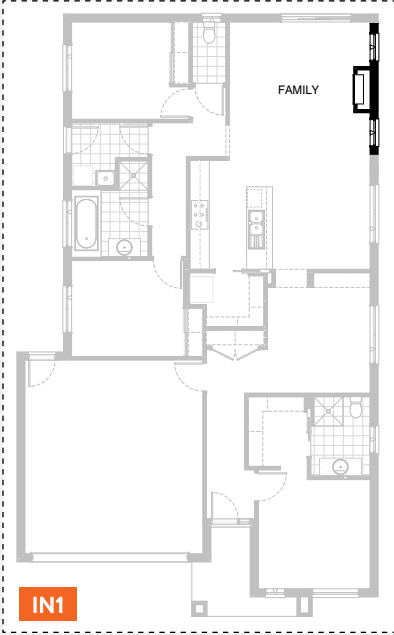
EN2



EN3



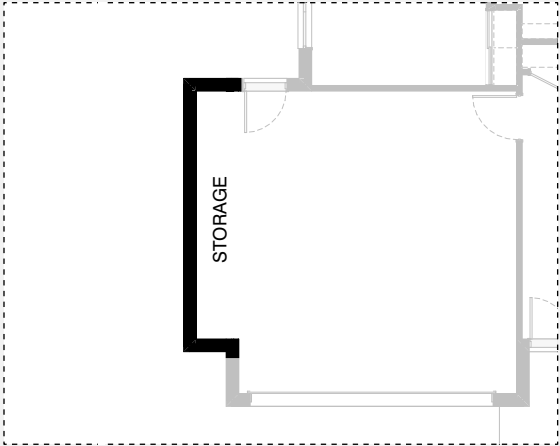
INTERNAL OPTION



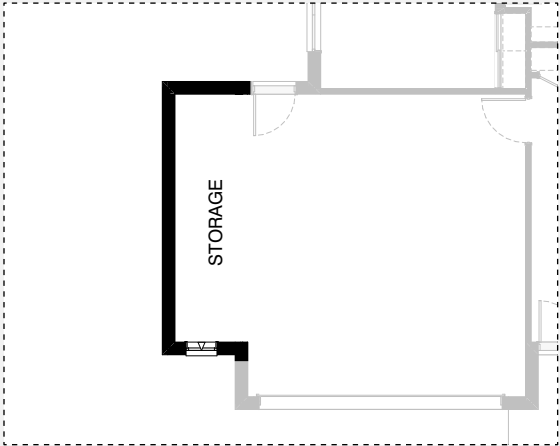
EXTERNAL OPTION



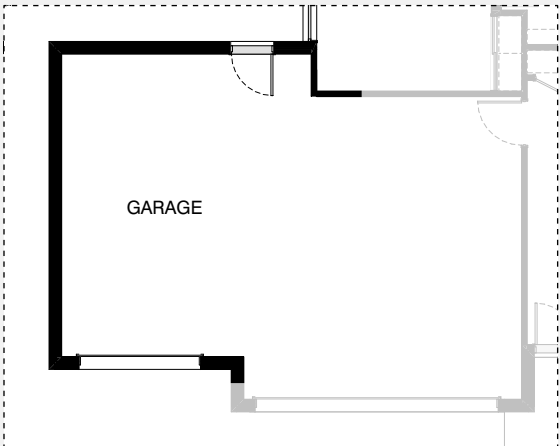
GARAGE OPTIONS



G1



G2



G3

KENWOOD 20

OPTION DESCRIPTIONS

Kitchen Option 01

Provide Kitchen upgrade with
1No. 900mm retractable rangehood,
1No. 900mm gas cooktop,
1No. 900mm electric underbench oven,
1No. 900mm base cupboard,
1No. 800mm base cupboard,
2No. 400mm base cupboards,
1No. 350mm base cupboard,
2No. 800mm overhead cupboards,
2No. 400mm overhead cupboards,
1No. laminated Microwave provision with pot drawer below.
1No. 450mm drawer unit,
1No. laminated DW provision

Kitchen Option 02

Provide Kitchen upgrade with
open shelf above refrigerator space.

Ensuite Option 01

Provide Ensuite option with wall to wall
1740mm x 900mm tiled shower base in lieu of standard.
1No. 782mm vanity unit in lieu of standard

Ensuite Option 02

Provide Ensuite upgrade by providing
Provide 1482 vanity with double basins
in lieu of standard.

Ensuite Option 03

Provide Ensuite option with
1No. 1500mm x 900mm tiled shower base in lieu of standard,
1No. 1582mm wide vanity unit with double basins and
1No. 1029mm x 850mm aluminium awning window
in lieu of standard.
Increase Ensuite and WIR length by 220mm and
reduce Living accordingly.

Internal Option 01

Provide Real Flame Inspire 900 Gas fireplace,
400mm off floor level in a 1400mm x 500mm
boxed out plaster wall with a 4 sided black fascia to
Family room side wall with capped gas point, including additional
2No. 1800mm x 850mm aluminium awning windows
in lieu of standard window.

Internal Option 02

Provide plaster bulkhead 900mm wide opening to
W.I.P. in lieu of standard cavity sliding door.

Internal Option 03

Provide 4No. 450mm wide x 32mm thick
laminated shelves to Living alcove.

Internal Option 04

Provide cabinet and shelving unit,
3No. 550mm wide base cabinets,
2No. 550mm wide overhead cabinets.
2No. open laminated shelves and
32mm thick laminated benchtop.

Internal Option 05

Provide 150mm plaster feature wall protrusion
with a 500mm deep plastered bulkhead.

External Option 02

Provide Alfresco to rear of Family with
tiled hip roof, structural concrete floor and
2No. 470mm x 470mm brick piers.
Increases area by 14.35m².
Increase length by 3240mm.
Overall width is 4430mm.

Garage Option 01

Provide extension to
Garage to create Storage area.
Increases area by 4.54m².
Increases width by 840mm.

Garage Option 02

Provide extension to Garage to create Storage area including:
1No. 2057mm x 610mm aluminium awning feature window.
Increases area by 7.78m².
Increases width by 1440mm.

Garage Option 03

Provide triple car garage including additional
2290mm x 2410mm garage door as per colour selection
Increases area by 24.54m².
Increases width by 3600mm.
Bed 2 window moves 250mm towards rear of house.

