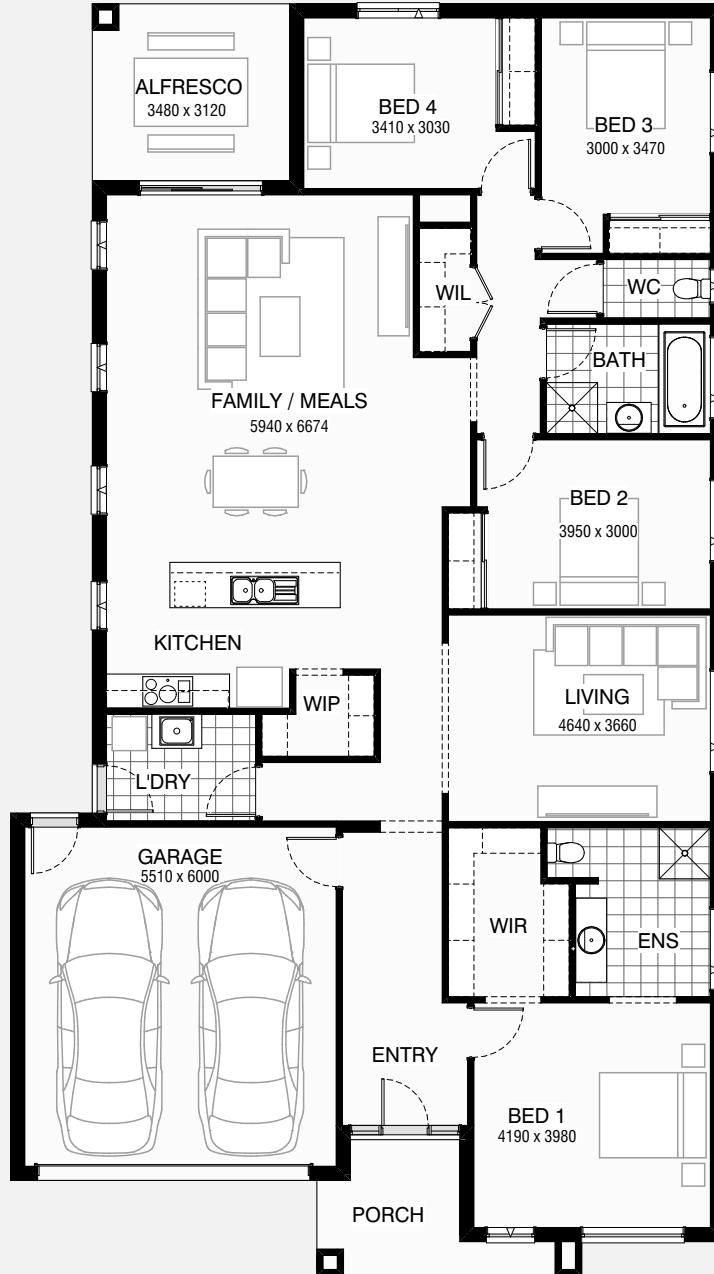


CARTWRIGHT 27

4 2 2

Total squares 27.0sq



B
SERIES

Minimum
Lot Width
14m

Minimum
Lot Length
30m

Design Dimensions
12,590mm(W) x 21,830mm(L),

Facade Choices
Brentwood, Glendale, Inglewood,
Malibu, Northridge, Pasadena, Santa Monica.
Details based on Inglewood façade floorplan (illustrated)

DESIGN DIMENSIONS

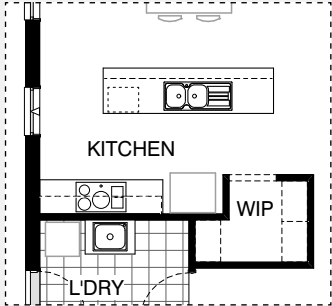
Residence	1971m ²	21.2sq
Garage	36.3m ²	3.9sq
Porch	6.9m ²	0.7sq
Alfresco	10.9m ²	1.2sq
Total	251.2m²	27.0sq

Burbank

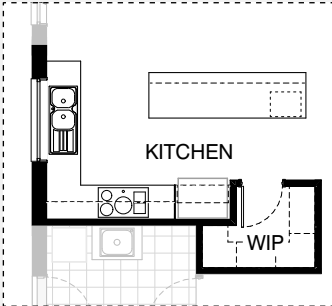
*Copyright conditions. All photos and illustrations are representative only. Floor plans and specifications may be varied by Burbank without notice, the dimensions are diagrammatic only and a Building Contract with final drawings will display correct dimensions and detail. All designs are the property of Burbank and must not be used, reproduced, copied or varied, wholly or in part without written permission from an authorised Burbank representative. Copyright Burbank Australia Pty Ltd. ABN 91 007 099 872. Builders Registration Number CDB-U-52603.



KITCHEN OPTIONS

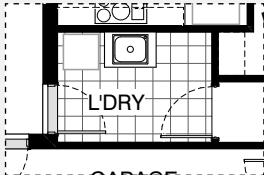


Master Kitchen Design

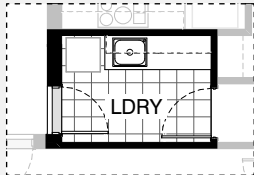


K1

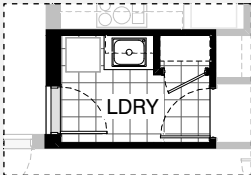
LAUNDRY OPTIONS



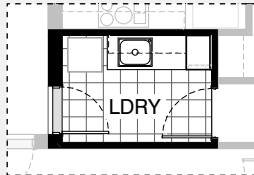
Master Laundry Design



LD1

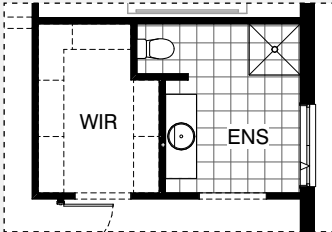


LD2

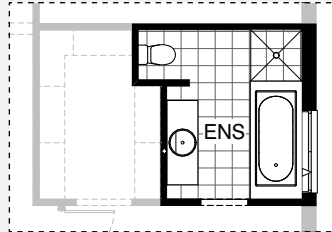


LD3

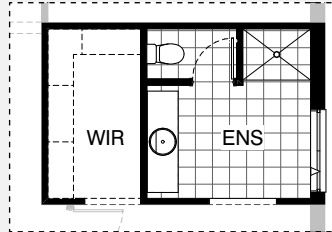
ENSUITE OPTIONS



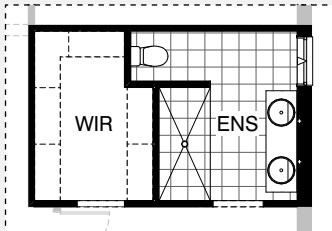
Master Ensuite Design



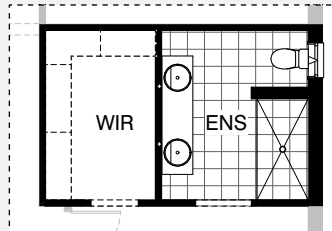
EN1



EN2



EN3



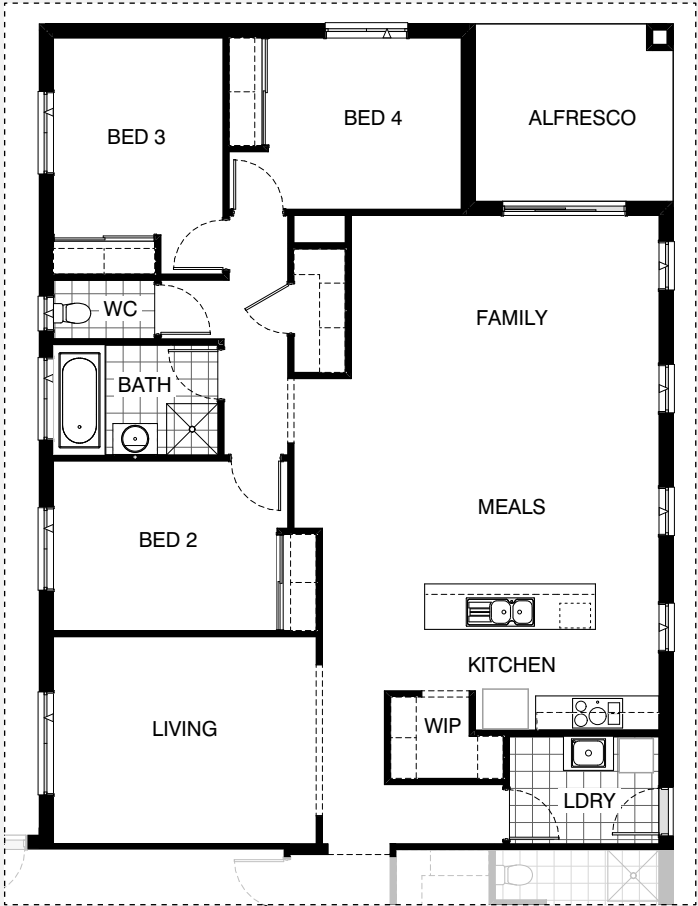
EN4

CARTWRIGHT 27

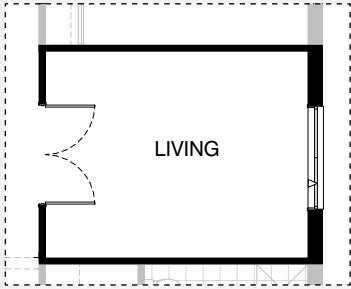
4 2 2



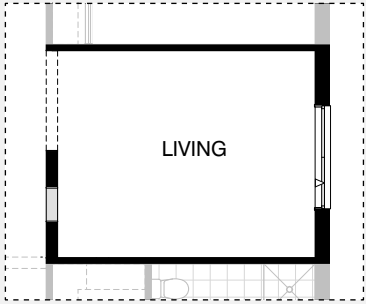
INTERNAL OPTIONS



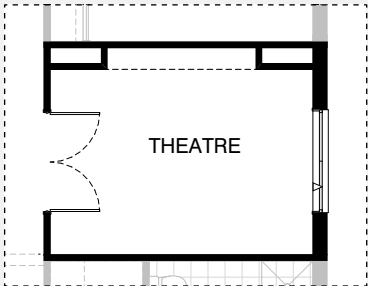
IN1



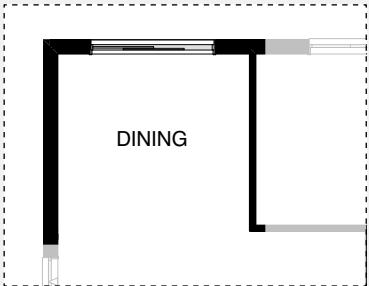
IN2



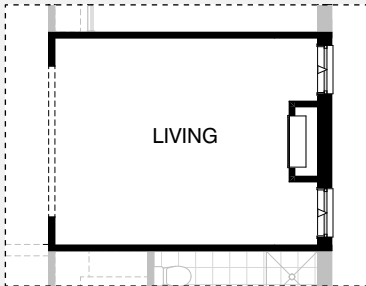
IN3



IN4



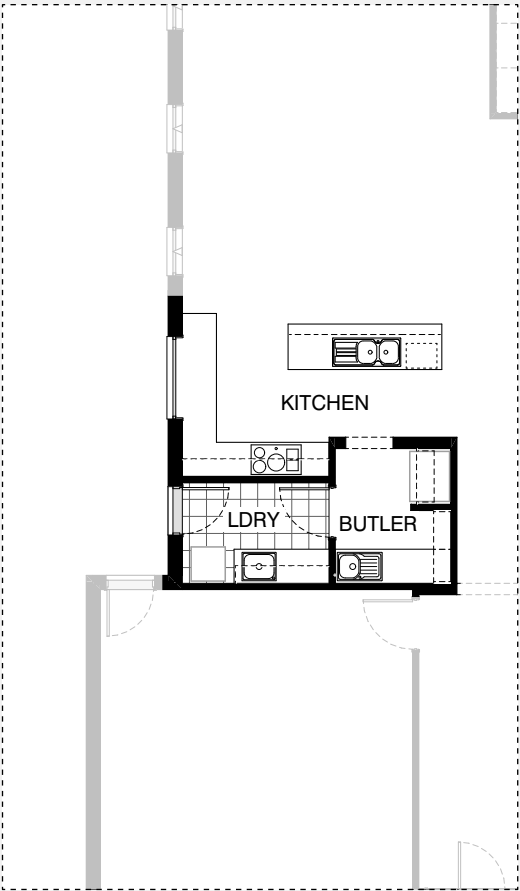
IN5



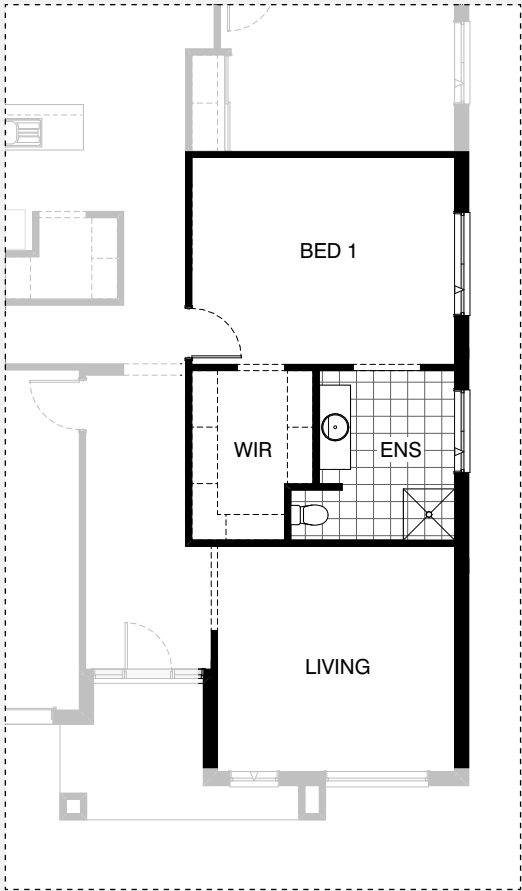
IN6



INTERNAL OPTIONS



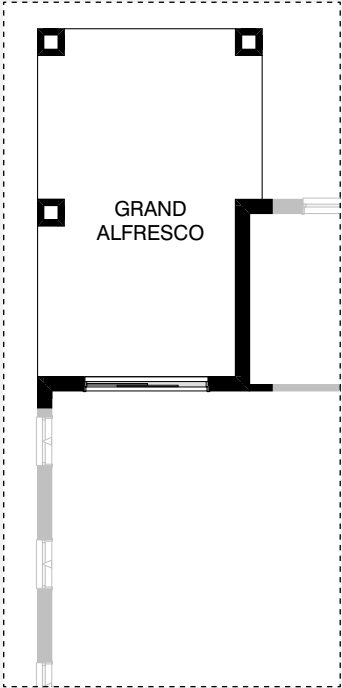
IN7



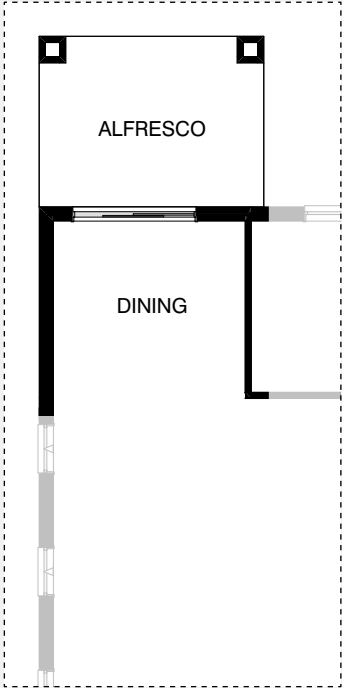
IN8



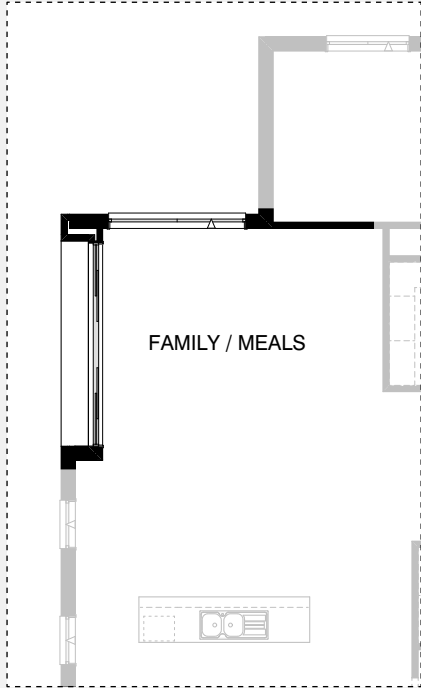
EXTERNAL OPTIONS



EX1

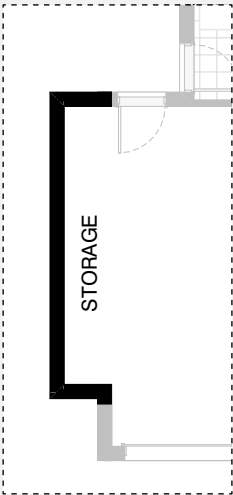


EX2

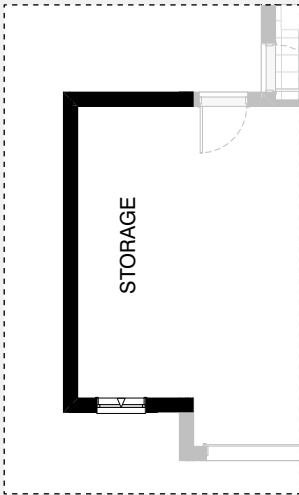


EX3

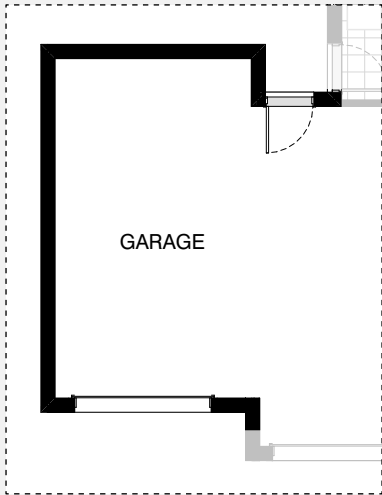
GARAGE OPTIONS



G1



G2



G3

CARTWRIGHT 27

OPTION DESCRIPTIONS

Kitchen Option 01

Provide Kitchen option with additional
1No. laminated MW provision with pot drawer below,
1No. laminated DW provision,
3No. 800mm base cabinets,
1No. 450mm base cabinet,
1No. 400 base cabinets,
1No. 450mm drawer unit,
1No. 900mm base corner carcass with 2/300mm doors,
1No. 400mm overhead cabinet,
2No. 450mm overhead cabinet and
open shelf above refrigerator space,
1No. 900mm underbench oven with 900mm gas cooktop and
retractable rangehood above. Delete W.T.P and
provide W.I.P with additional 450mm deep shelves and
relocate 1No. 720mm flush panel door and delete opening / bulkhead to
Pantry and provide 1No. 1200mm x 1450mm aluminium fixed window
with no bottom reveal in lieu of standard with
additional tiled splashback and benchtop to suit.

Laundry Option 01

Provide Laundry option including
inset trough in 32mm laminated benchtop,
1No. 800mm base cabinet,
2No. 900mm overhead cabinets,
additional tiled splashback and benchtop to suit.

Laundry Option 02

Provide Laundry option with additional plaster lined site built
broom cupboard with 1No. 720mm flush panel hinged door,
1No. 800mm base cupboard with inset trough,
1No. 800mm overhead cabinet,
additional tiled splashback and benchtop to suit.

Laundry Option 03

Provide Laundry upgrade with
1No. 400mm laminated Broom unit,
1No. 450mm base cabinet,
1No. 900mm base cabinet,
1No. 450mm overhead cabinet,
1No. 900mm overhead cabinet with inset trough
including additional 32mm laminate benchtop and
tiled splashback to suit.

Ensuite Option 01

Provide Ensuite option with additional
1675mm bath with 900mm wide tiled hob.
Relocate shower door and reduce
opening / bulkhead width by 350mm to suit.

Ensuite Option 02

Provide additional plaster lined stud wall with
720mm flush panel hinged door to WC,
1190mm x 900mm tiled shower base in lieu of standard.
Reduce W.I.R by 500mm and delete shelving and
provide 1782mm vanity in lieu of standard 1482mm vanity.

Ensuite Option 03

Provide Ensuite upgrade with wall to wall
1990mm x 900mm tiled shower base,
1No. 1782mm wide vanity unit with double basins
in lieu of standard.
1No. 1800mm x 850mm aluminium awning window
in lieu of standard and increase Ensuite width
by 50mm and decrease W.I.R by 50mm to suit and
reduce opening / bulkhead width by 300mm to suit.

Ensuite Option 04

Provide Ensuite upgrade by increasing Ensuite by 200mm
and reduce W.I.R. Provide 1780mm x 900mm tiled shower base with
180mm nib wall to separate WC and
2082mm vanity unit with double basins in lieu of standard.
Provide 1029mm x 610mm aluminium awning window
to Ensuite in lieu of standard and remove 1No. run of 450mm shelf and
hanging rail from W.I.R and reduce opening / bulkhead width by 200mm to
suit.

Internal Option 01

Mirror rear of house.

Internal Option 02

Provide 2No. 870mm flush panel hinged
doors and additional plaster lined stud
wall to Living in lieu of standard opening.

Internal Option 03

Provide feature opening and wall cut-out
to Living with 180mm wide bulkhead
above in lieu of standard opening.

Internal Option 04

Convert standard Living room into Theatre room
including 2No. 870mm flush panel hinged doors,
additional plaster lined stud wall and feature wall with
plaster columns and bulkhead above.
Window to move towards front of house by 120mm

Internal Option 05

Convert standard Alfresco area to Dining room.
(Note: This Option cannot be selected with External01)

Internal Option 06

Provide Real Flame Inspire 900 Gas fireplace,
400mm off floor level in a 1400mm x 500mm
boxed out plaster wall with a 4 sided black
fascia to Living room side wall with capped gas point.
Provide additional 2No. 2057mm x 850mm aluminium
awning feature windows in lieu of standard.

Internal Option 07

Provide Kitchen, Butlers Pantry and Laundry upgrade including
reduce Laundry by 400mm towards Garage and
increase Butlers by 50mm. Remove 2No. 720mm hinged doors and
Provide Butlers Pantry redesign to suit including 180mm stud wall to entry
and 850mm opening. Provide 2No. 450mm base cabinets,
1No. 1050mm blind corner cabinet with 600mm door,
1No. 900mm underbench oven with 900mm gas cooktop and
retractable rangehood above, 3No. 900mm base cabinets,
1No. dishwasher provision,
1No. 450mm drawer unit,
1No. microwave provision with pot drawer below,
2No. 800mm base cabinets,
open shelf above refrigerator space,
1No. 450mm overhead cabinet,
1No. 800mm overhead cabinet,
1No. 350mm overhead cabinet.
Additional single bowl sink to Butlers including
additional 20mm stone benchtop and tiled splashback to suit.
Provide 300mm deep laminated shelving unit to Butlers as indicated and
1200mm x 1450mm aluminium fixed window with no bottom reveal
in lieu of standard to Kitchen splashback.
Provide Laundry upgrade with inset trough,
2No. 800mm base cabinets,
2No. 800mm overhead cabinets with additional tiled splashback and
benchtop to suit.



CARTWRIGHT 27

OPTION DESCRIPTIONS

Internal Option 08

Relocate Living with Bed 1 including mirror Ensuite & W.I.R. Change Bed 1 door to be single 870mm.

External Option 01

Increase standard Alfresco length by 3000mm under dwelling roof line to create Grand Alfresco including additional structural concrete floor and 2No. 470mm x 470mm brick piers.
(Note: This option can not be selected with Internal05 and External02)
Increases area by 11.85m².

External Option 02

Convert standard Alfresco area to Dining Room and provide Alfresco under dwelling roof line including additional structural concrete floor and 2No. 470mm x 470mm brick piers to rear of Dining room.
(Note: This option is not available with External01 & Internal05)
Increases area by 11.13m².
Increases length by 3000mm.

External Option 03

Delete standard Alfresco and recess Family / Meals including: Additional structural concrete floor.
Provide 1No. 2095mm x 3575mm aluminium Bi-Parting sliding door to Family / Meals in lieu of standard windows.
Provide 1No. 1800mm x 2410mm aluminium awning window to Alfresco in lieu of standard sliding door.
Window and door changes to suit Aurora north facing side boundary compliance.
Decreases area by 12.59m².

Garage Option 01

Provide extension to Garage to create additional Storage area.
Increases area by 4.58m².
Increases width by 840mm.

Garage Option 02

Provide extension to Garage to create Storage area including: additional 2057 x 850 aluminium awning feature window.
Increases area by 13.51m².
Increases width by 2400mm.

Garage Option 03

Provide triple car Garage including additional 2140mm x 2410mm Garage door as per colour selection.
Increases area by 23.61m².
Increases width by 3600mm.