

RIVERTON 22

3 2 2

Total squares 22.1sq

B
SERIES

Minimum
Lot Width
14.0m

Minimum
Lot Length
25.0m



Design Dimensions
12,590mm(W) x 18,590mm(L).

Facade Choices
Brentwood, Glendale, Inglewood,
Malibu, Northridge, Pasadena, Santa Monica.
Details based on Inglewood façade floorplan (illustrated)

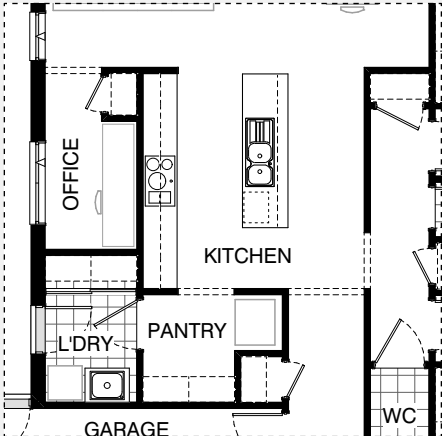
DESIGN DIMENSIONS

Residence	151.0m ²	16.3sq
Garage	36.4m ²	3.9sq
Porch	6.2m ²	0.7sq
Alfresco	12.1m ²	1.3sq
Total	205.7m²	22.10sq

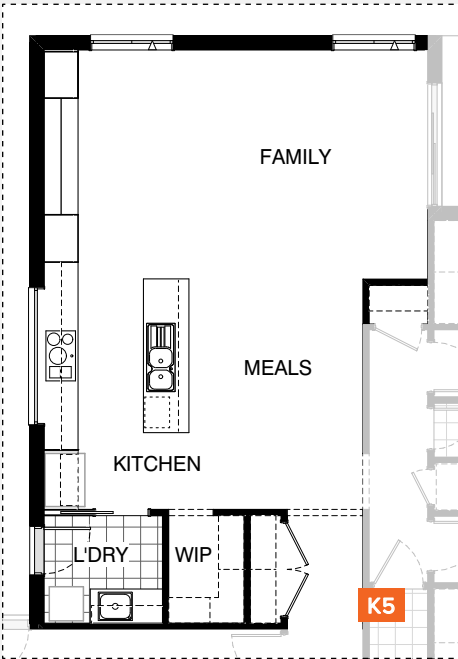
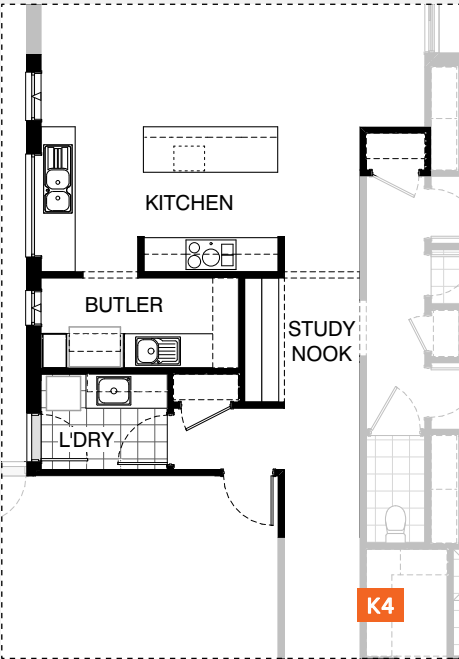
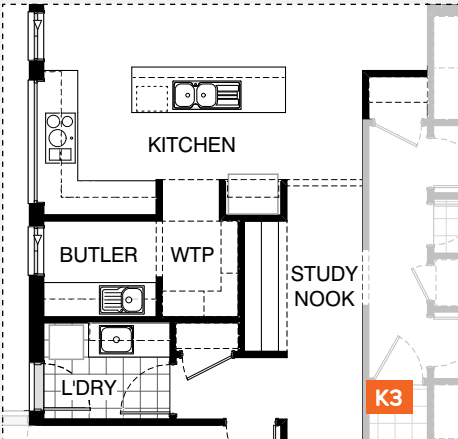
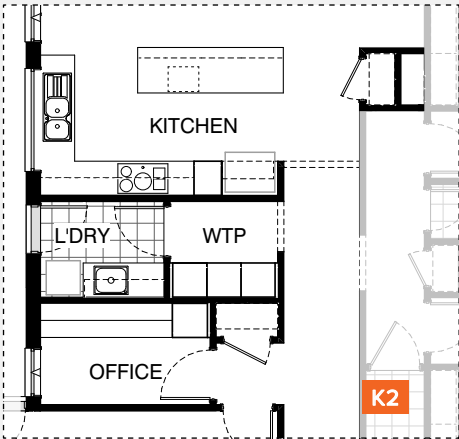
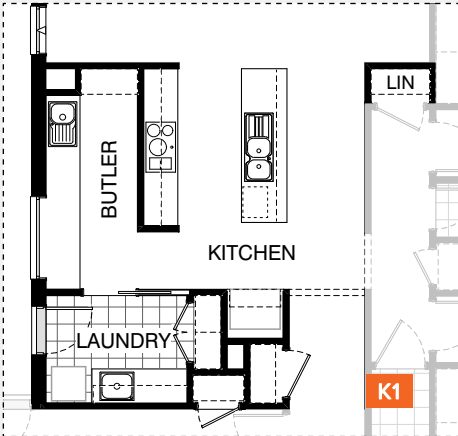
Burbank

*Copyright conditions. All photos and illustrations are representative only. Floor plans and specifications may be varied by Burbank without notice, the dimensions are diagrammatic only and a Building Contract with final drawings will display correct dimensions and detail. All designs are the property of Burbank and must not be used, reproduced, copied or varied, wholly or in part without written permission from an authorised Burbank representative. Copyright Burbank Australia Pty Ltd. ABN 91 007 099 872. Builders Registration Number CDB-U-52603.

KITCHEN OPTIONS

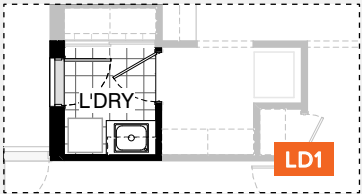
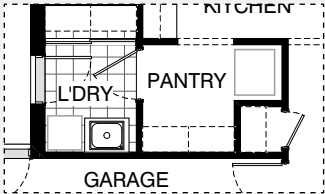


Master Kitchen Design



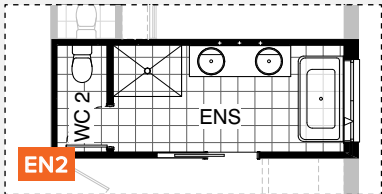
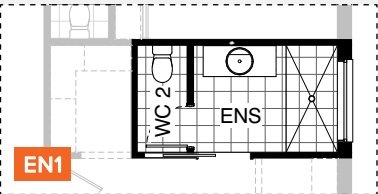
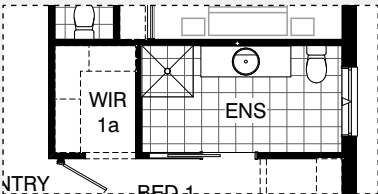


LAUNDRY OPTIONS



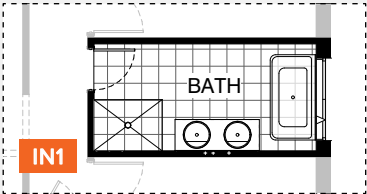
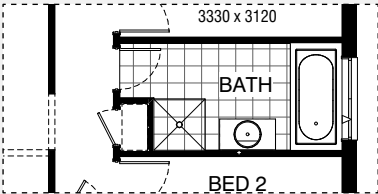
Master Laundry Design

ENSUITE OPTIONS



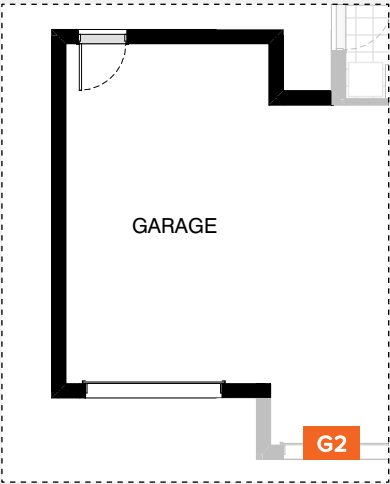
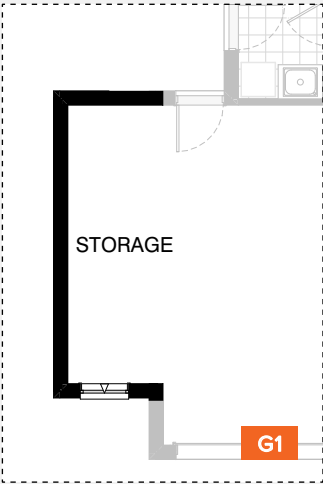
Master Ensuite Design

BATHROOM OPTIONS

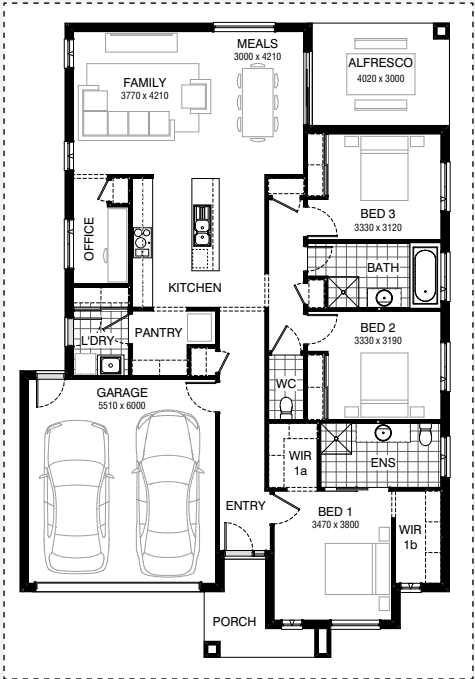


Master Bathroom Design

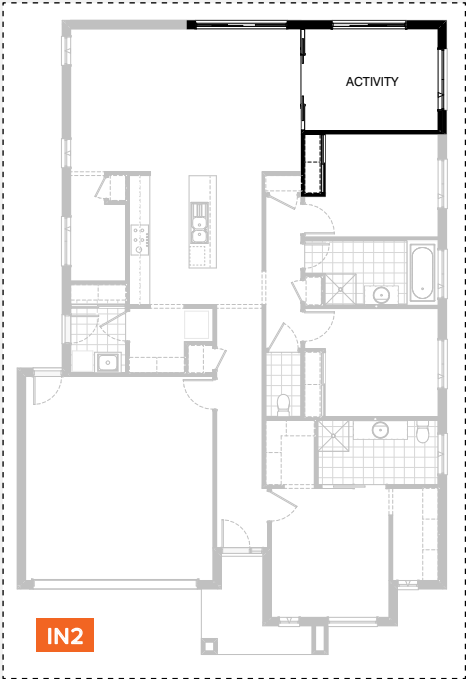
GARAGE OPTIONS



INTERNAL OPTIONS



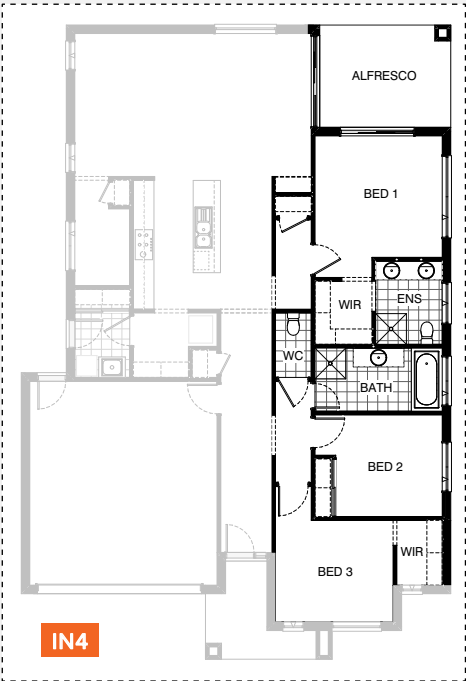
Master Design



IN2

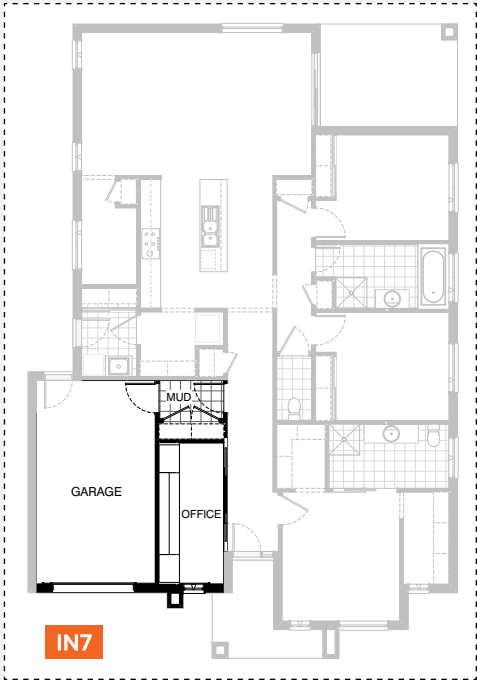
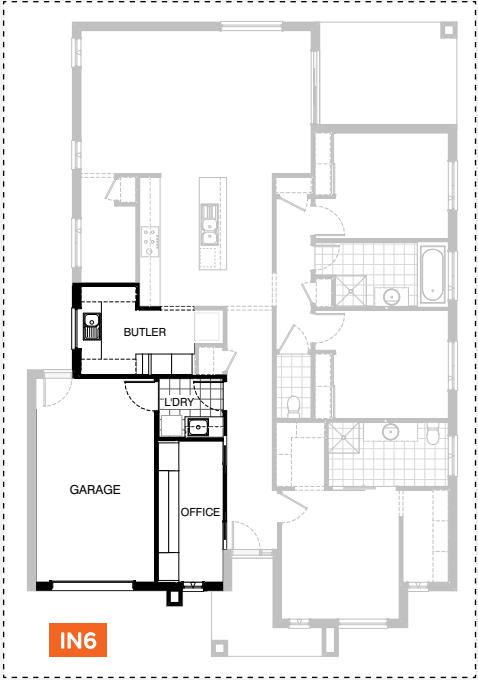
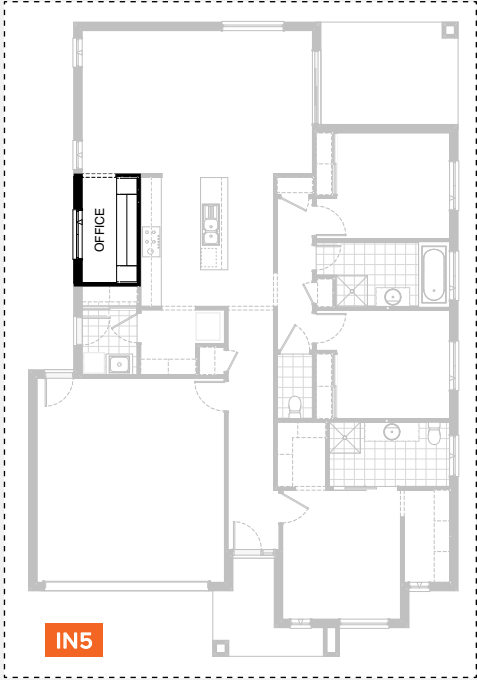


IN3



IN4

INTERNAL OPTIONS



RIVERTON 22

OPTION DESCRIPTIONS

Kitchen Option 01

Provide Butler's Pantry in lieu of Walk-in Pantry and Office, including:
20mm stone benchtop,
single bowl sink,
1No. 900mm base cupboard,
3No. 800mm base cupboards,
4No. 450mm shelves,
open shelf over relocated Ref. space,
Provide 1200mm x 1450mm aluminium fixed window with no bottom reveal.
Laundry includes:
1No. 920mm cavity sliding door, inset trough and
2No. 800mm base cupboards,
2No. 800mm overhead cupboards,
32mm laminate benchtop and tiled splashback to suit.
Provide 1No. built-in Linen cupboard with
2No. 520mm hinged doors and 4No. 450mm shelves.
Provide 1No. built-in Coats cupboard with 820mm hinged door and
1No. 450mm shelf and hanging rail.
Provide 1No. built-in Store cupboard to Garage with
720mm hinged door and 4No. 450mm shelves.
Note: Kitchen cabinetry to remain unchanged.
Note: Linen cupboard near Bed 3 increases in depth to line up with Kitchen.

Kitchen Option 02

Provide Kitchen upgrade option with L-shaped benchtop,
relocating the Ref. space, Laundry and Office.
Kitchen includes:
1No. 900mm retractable rangehood,
1No. 900mm under bench oven and cooktop,
1No. 450mm drawer unit,
1No. dishwasher provision,
1No. microwave provision with pot drawer,
1No. 900mm base cupboard,
1No. 900mm corner base cupboard,
2No. 700mm base cupboards,
2No. 450mm base cupboards,
1No. 900mm overhead cupboard,
1No. 450mm overhead cupboard,
1No. 400mm overhead open shelf unit,
1No. 450mm laminated pantry unit with
5No. 450mm shelves,
open shelf over Ref. space,
1No. 1200mm x 1810mm aluminium fixed window with
no bottom reveal over sink.
Provide new plaster-lined Pantry with 720mm hinged door
and 4No. 450mm shelves in lieu of standard Linen closet.
Walk-through Pantry includes:
3No. 600mm laminated pantry unit with
5No. 450mm shelves.
Laundry includes:
1No. 870mm hinged door, inset trough and
1No. 900mm base cupboard,
1No. 450mm base cupboard,
1No. 900mm overhead cupboard,
1No. 450mm overhead cupboard,
32mm laminate benchtop and tiled splashback to suit.
Office joinery includes:
1No. 600mm deep 32mm thick laminate desk,
1No. 450mm wide drawer unit beneath desk,
2No. 300mm deep 60mm thick open shelves over desk,
1No. 600mm laminated cupboard with
5No. 450mm shelves,
1No. 1800mm x 850mm aluminium awning window.
Provide 870mm hinged door and new plaster-lined Coats with
820mm hinged door and 1No. 450mm shelf and hanging rail.
Note: Garage access door moves into
passage near Laundry as shown

Kitchen Option 03

Provide Kitchen upgrade option with L-shaped benchtop,
relocating the Ref. space, Laundry and
provide Study Nook in lieu of Office.
Kitchen includes:
1No. 900mm retractable rangehood,
1No. 900mm under bench oven and cooktop,
1No. 450mm drawer unit,
1No. dishwasher provision,
1No. microwave provision with pot drawer,
1No. 900mm base cupboard,
1No. 900mm corner base cupboard,
2No. 700mm base cupboards,
1No. 350mm base cupboard,
2No. 700mm overhead cupboards,
1No. 350mm overhead cupboard,
2No. 300mm overhead cupboards,
1No. 600mm corner overhead cupboard,
open shelf over Ref. space,
1No. 514mm x 2170mm aluminium fixed window with
no bottom reveal over cooker.
Walk-through Pantry includes:
4No. 300mm shelves,
4No. 450mm shelves.
Butler's Pantry includes:
1No. single bowl sink,
1No. 700mm base cupboard,
2No. 600mm base cupboards,
1No. 700mm overhead cupboard,
2No. 600mm overhead cupboards,
20mm stone benchtop with tiled splashback. Laundry includes:
870mm hinged door, inset trough and
1No. 900mm base cupboard,
1No. 450mm base cupboard,
1No. 900mm overhead cupboard,
1No. 450mm overhead cupboard,
32mm laminate benchtop and
tiled splashback to suit.
Provide plaster-lined Linen closet to passage with
870mm hinged door and
4 No. 450mm shelves.
Study Nook joinery includes:
1No. 600mm deep 32mm thick laminate desk,
2No. 60mm thick 300mm deep open shelves over desk,
1No. 450mm drawer unit under desk.
Note: Garage access door moves into passage near
Laundry as shown
Note: Linen cupboard near Bed 3 increases in depth to
line up with island bench.



RIVERTON 22

OPTION DESCRIPTIONS

Kitchen Option 04

Provide Kitchen upgrade option with 3-way benchtop, relocate Ref. space, Laundry and provide Study Nook in lieu of Office.

Kitchen includes:

1No. 900mm retractable rangehood,
1No. 900mm under bench oven and cooktop,
1No. 450mm drawer unit,
1No. dishwasher provision,
1No. microwave provision with pot drawer,
2No. 900mm base cupboards,
2No. 700mm base cupboards,
2No. 600mm base cupboards,
2No. 700mm overhead cupboards,
open shelf over Ref. space,
1No. 1200mm x 1810mm aluminium fixed window with no bottom reveal over sink.

Butler's Pantry includes:

20mm thick stone benchtop,
single bowl sink,
1No. 800mm base cupboard,
1No. 700mm base cupboard,
1No. 4 No. 450mm shelves,
1No. 1800mm x 610mm aluminium awning window.

Laundry includes:

870mm hinged door, inset trough and
1No. 900mm base cupboard,
1No. 450mm base cupboard,
1No. 900mm overhead cupboard,
1No. 450mm overhead cupboard,
32mm laminate benchtop and tiled splashback to suit.
Provide plaster-lined Linen closet to passage with 870mm hinged door and 4 No. 450mm shelves.

Study Nook joinery includes:

1No. 600mm deep 32mm thick laminate desk,
1No. 450mm wide drawer unit beneath desk,
2No. 60mm thick 300mm deep open shelves over desk.

Note: Garage access door moves into passage near Laundry as shown

Note: Linen cupboard near Bed 3 increases in depth to line up with island bench.

Kitchen Option 05

Provide alternate Kitchen option with Study Nook in lieu of Office.

Kitchen includes:

1No. 900mm retractable rangehood,
1No. 900mm under bench oven and cooktop,
1No. 450mm drawer unit,
1No. dishwasher provision,
1No. microwave provision with pot drawer,
1No. 900mm base cupboard,
2No. 800mm base cupboards,
2No. 400mm base cupboards,
2No. 800mm overhead cupboards,
2No. 400mm overhead cupboards,
open shelf over Ref. space,
1No. 514mm x 2410mm aluminium fixed window with no bottom reveal over cooker.

Walk-in Pantry includes:

4No. 450mm shelves,
Laundry includes:
1No. 920mm cavity sliding door, inset trough and
1No. 800mm base cupboard,
1No. 400mm base cupboard,
1No. 800mm overhead cupboard,
1No. 400mm overhead cupboard,
32mm laminate benchtop and tiled splashback to suit.
Provide plaster-lined Linen cupboard to passage with 2No. 820mm hinged doors and 4No. 450mm shelves.

Study Nook joinery includes:

1No. 600mm deep 32mm thick laminate desk,

2No. 800mm laminated cupboards with 5No. 450mm shelves,
2No. 300mm deep 60mm thick open shelves over desk.
Provide 2No. 2057mm x 1450mm aluminium awning windows to Family in lieu of standard.

Note: Linen cupboard near Bed 3 increases in depth to line up with island bench.

Laundry Option 01

Provide Laundry upgrade with laminate base and overhead cupboards and inset trough, including:

1No. 800mm base cupboard,
1No. 800mm overhead cupboard,
32mm laminate benchtop and tiled splashback to suit.

Ensuite Option 01

Provide Ensuite upgrade option including:

1No. 1282mm vanity with single basin,
1880mm x 900mm wall to wall tiled shower base,
1No. 350mm x 1450mm aluminium fixed window over shower in lieu of standard,
Enclosed WC with 720mm hinged door.

Ensuite Option 02

Provide Ensuite upgrade option including:

1No. 1782mm vanity with double basins and 4 x doors & shelf,
1200mm x 900mm tiled shower base,
1No. 1500mm free-standing bath,
1No. 1200mm x 1450mm aluminium awning window over bath in lieu of standard,
Enclosed WC with 720mm hinged door.
Note: option removes window to Bed 1

Internal Option 01

Provide Bathroom upgrade option, including:

1No. 1500mm free-standing bath,
1No. 1482mm vanity with double basins and 4 x doors & shelf,
900mm x 1200mm tiled shower base.
Note: option removes Coats cupboard to Passage.

Internal Option 02

Provide Activity option in lieu of Alfresco, including:

2No. 720mm bi-parting cavity sliding doors,
Provide 1No. 2095mm x 2170mm aluminium sliding door to Activity.
Move 2095mm x 2170mm aluminium sliding door to Meals as shown.
Move 1800mm x 1810mm aluminium awning window to Activity as shown.
Note: Bed 3 Robe reduced to suit.

Internal Option 03

Provide second Living area option in lieu of Bed 3, including:

Removing built-in Robe and hinged door,
Remove built-in Linen cupboard,
1No. 2107mm - 3610mm x 2410mm aluminium corner sliding door in lieu of standard,
1No. 1200mm x 2410mm aluminium awning window in lieu of standard,
Provide Study Nook facing Kitchen.
Study Nook Joinery includes:
1No. 600mm deep 32mm thick laminate desk,
1No. 450mm wide drawer unit beneath desk,
2No. 60mm thick 300mm deep open shelves over desk.



RIVERTON 22

OPTION DESCRIPTIONS

Internal Option 04

Provide Bed 1 option which moves it to the rear of the home, including:
1No. 2095mm x 2170mm aluminium sliding door to Bed 1,
1No. 514mm x 2410mm aluminium awning window
in lieu of standard.
Ensuite has 1No. 1782mm vanity with double basins including
1 row tiling beneath mirror to suit wall to wall benchtop
in lieu of standard.
Bath now has 1482mm vanity with single basin.

Internal Option 05

Provide built-in joinery option to Home Office, including:
1No. 600mm deep 32mm thick laminate desk,
2No. 450mm full height laminate Storage cupboards with
5No. 450mm shelves,
2No. 300mm deep 60mm thick open shelves over desk,
Remove built-in plaster-lined store.

Internal Option 06

Provide Home Office/Alternate Laundry option with
Single car Garage in lieu of double Garage and
Butler's Pantry in lieu of Walk-in Pantry/Laundry.
Laundry includes:
870mm hinged door, inset trough,
1No. 700mm base cupboard,
1No. 350mm base cupboard,
1No. 700mm overhead cupboard,
1No. 350mm overhead cupboard,
32mm laminate benchtop and tiled splashback to suit.
Home Office built-in joinery includes:
1No. 600mm deep 32mm thick laminate desk,
2No. 800mm laminated cupboards,
2No. 300mm deep 60mm thick open shelves over desk,
2No. 820mm bi-parting cavity sliding doors,
1No. 2057mm x 610mm aluminium awning feature window.
Butler's Pantry includes:
2No. 180mm wide full height wine rack,
2No. 600mm oven towers with microwave provisions,
600mm deep 20mm thick stone benchtop,
1No. single bowl sink,
2No. 800mm base cupboards,
2No. 450mm deep adjustable shelf units,
1No. 1200mm x 1210mm aluminium fixed window.
Provide 1No. 2410mm wide Garage door to new single Garage
in lieu of standard with 450mm x 470mm engaged pier to
project under eaves.

Internal Option 07

Provide Home Office/Mud room option with Single car Garage
in lieu of Double Garage, including:
Tiled Mud room with 870mm hinged door,
1No. built-in Linen cupboard with 2No. 820mm hinged doors and
4No. 450mm shelves
Home Office built-in joinery includes:
1No. 600mm deep 32mm thick laminate desk,
2No. 800mm laminated cupboards,
2No. 300mm deep 60mm thick open shelves over desk,
2No. 820mm bi-parting cavity sliding doors,
1No. 2057mm x 610mm aluminium awning feature window.
Provide 1No. 2410mm wide Garage door to new single Garage
in lieu of standard with 450mm x 470mm engaged pier to project under
eaves.

Garage Option 01

Provide extension to Garage to create
additional Storage area including additional
2057mm x 850mm aluminium awning feature window.
Increases width of the home by 1680mm.
Increases area of the home by 9.07m²

Garage Option 02

Provide extension to Garage to create
Triple Car Garage including additional
2290mm x 2410mm Garage door as per
colour selection and relocated external door.
Increases width of the home by 3600mm.
Increases area of the home by 23.84m²

