

KENWOOD 23

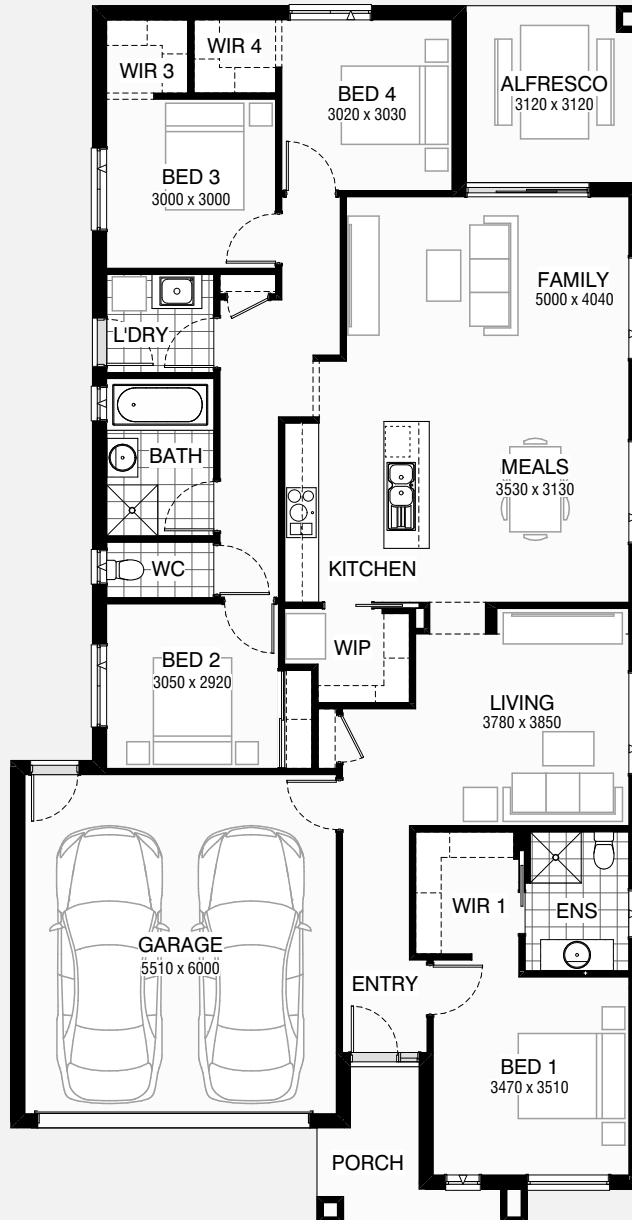
4 2 2

Total squares 22.7sq

B
SERIES

Minimum
Lot Width
12.5m

Minimum
Lot Length
28.5m



Design Dimensions
11,150mm(W) x 21,590mm(L).

Facade Choices
Brentwood, Glendale, Inglewood,
Malibu, Northridge, Pasadena, Santa Monica.
Details based on Inglewood façade floorplan (illustrated)

DESIGN DIMENSIONS

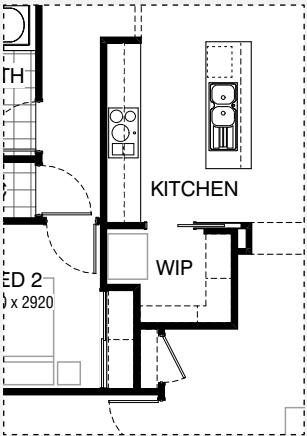
Residence	159.4m ²	17.2sq
Garage	36.5m ²	3.9sq
Porch	5.5m ²	0.6sq
Alfresco	9.7m ²	1.0sq
Total	211.1m²	22.7sq

Burbank

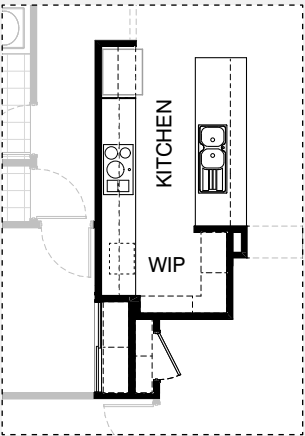
*Copyright conditions. All photos and illustrations are representative only. Floor plans and specifications may be varied by Burbank without notice, the dimensions are diagrammatic only and a Building Contract with final drawings will display correct dimensions and detail. All designs are the property of Burbank and must not be used, reproduced, copied or varied, wholly or in part without written permission from an authorised Burbank representative. Copyright Burbank Australia Pty Ltd. ABN 91 007 099 872. Builders Registration Number CDB-U-52603.



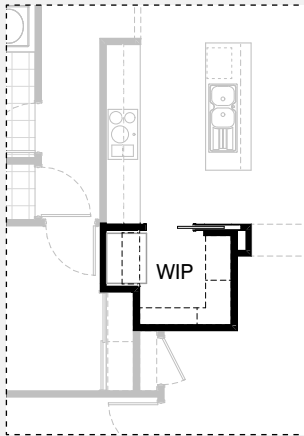
KITCHEN OPTIONS



Master Kitchen Design

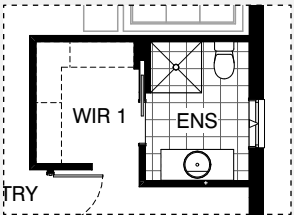


K1

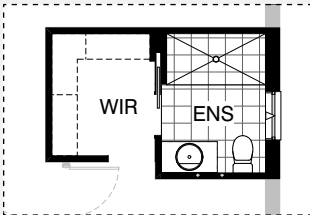


K2

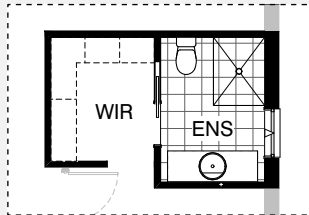
ENSUITE OPTIONS



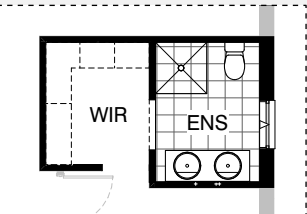
Master Ensuite Design



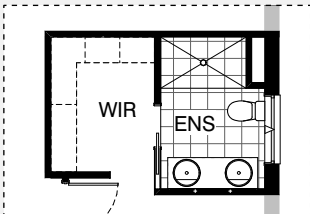
EN2



EN2

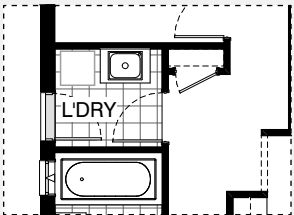


EN3

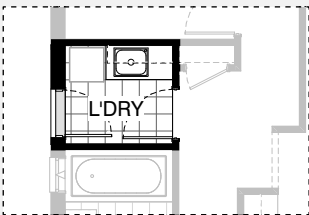


EN4

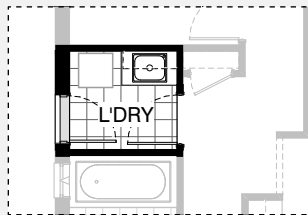
LAUNDRY OPTION



Master Laundry Design



LD1

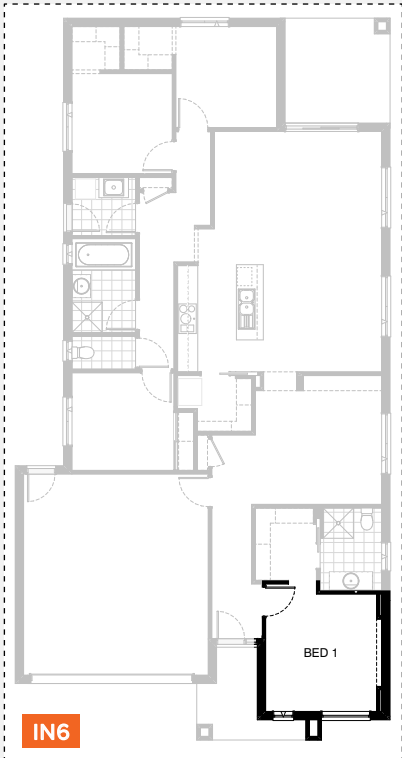
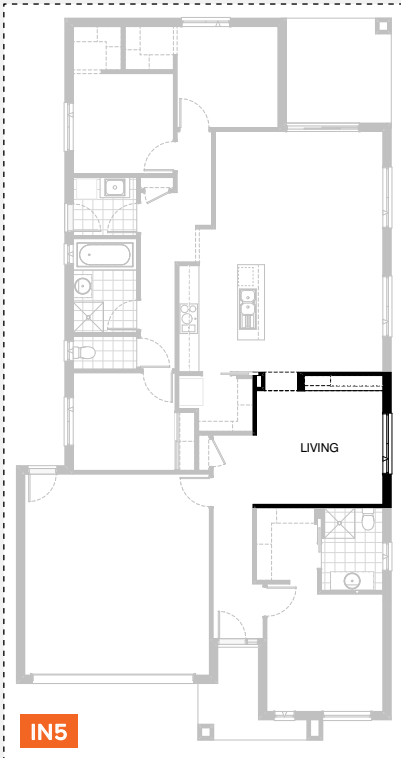
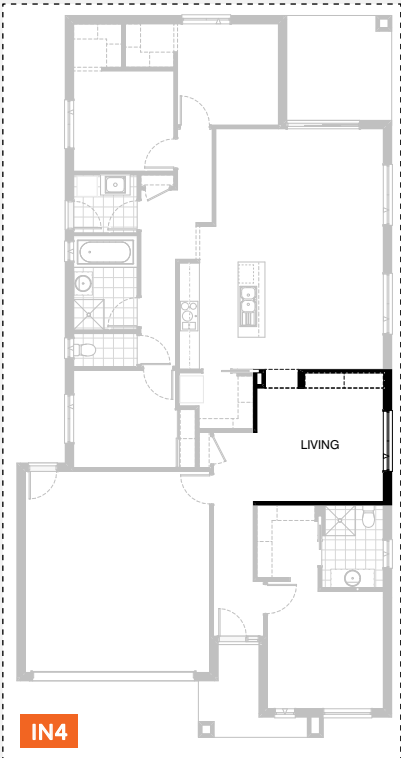
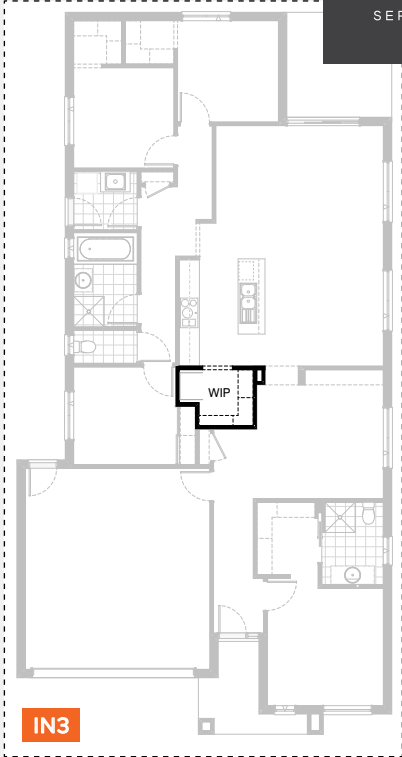
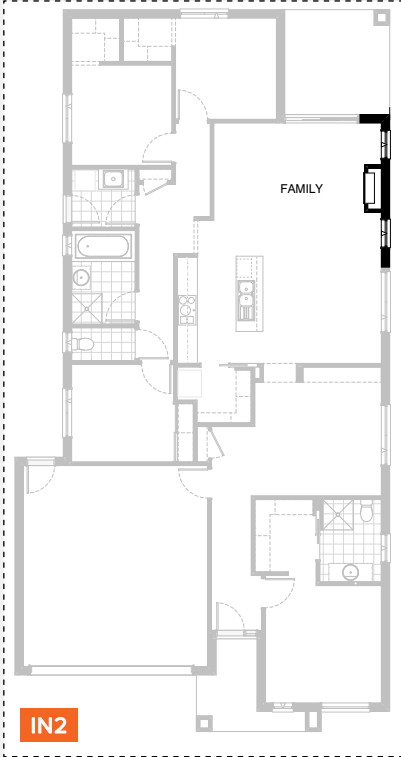
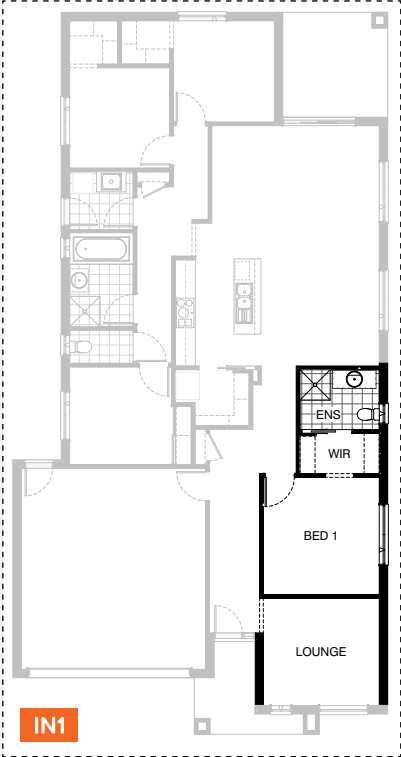


LD2

KENWOOD 23

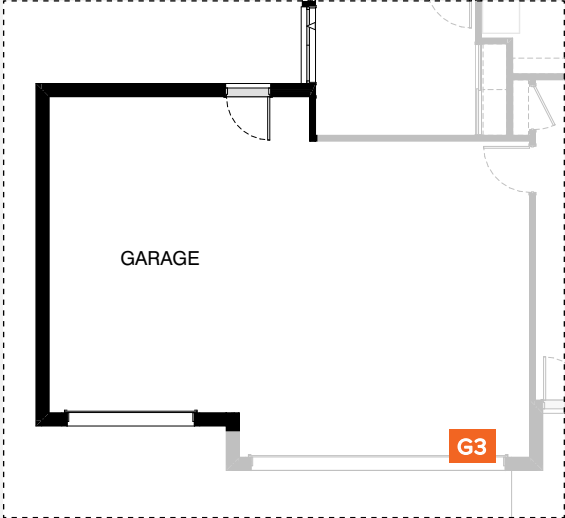
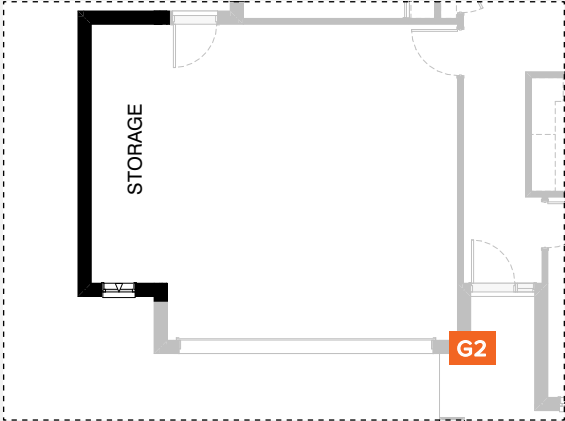
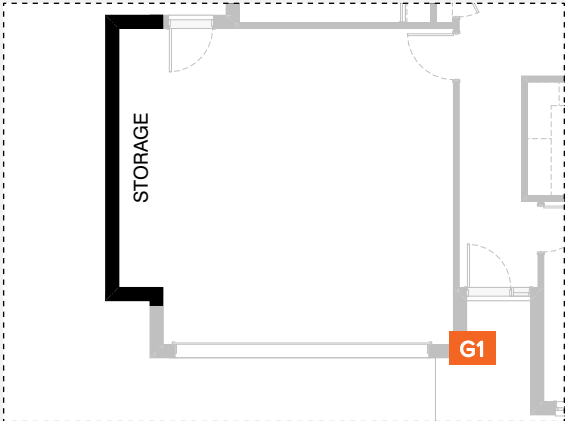
4 2 2

INTERNAL OPTIONS





GARAGE OPTIONS



KENWOOD 23

OPTION DESCRIPTIONS

Kitchen Option 01

Provide Kitchen upgrade including removing wall between Kitchen and W.I.P. and cavity sliding door.
Relocate island bench against W.I.P wall and provide 2No. 900mm base cabinets and 1No. 450mm drawer unit and 1No. laminated DW provision,
1No. 900mm underbench oven with 900mm cooktop & retractable rangehood above reduce void in W.I.P and relocate refrigerator space to other end of Kitchen bench.
Extend Kitchen bench to include
1No. 300mm base cabinet,
2No. 800mm base cabinets,
1No. laminated MW provision,
2No. 800mm overhead cabinets,
1No. 900mm overhead cabinet,
open shelf above refrigerator space.
Bed 2 robe to decrease by 130mm and Store to increase by 240mm .

Kitchen Option 02

Provide Kitchen upgrade with open shelf above refrigerator space.

Ensuite Option 01

Provide Ensuite option with wall to wall 1740mm x 900mm tiled shower base in lieu of standard and 1No. 982mm vanity unit in lieu of standard.

Ensuite Option 02

Provide Ensuite option with 1No. 1200mm x 900mm tiled shower base in lieu of standard.
1No. 1582mm vanity unit in lieu of standard.
Decrease Bed 1 length by 70mm and Living length by 30mm to suit.

Ensuite Option 03

Provide Ensuite upgrade with 1No. 1482mm vanity unit with double basins in lieu of standard.
Provide 900mm wide bulkhead to Ensuite in lieu of cavity sliding door.

Ensuite Option 04

Provide Ensuite option with 1No. 1500mm x 900mm tiled shower base in lieu of standard
1No. 1582mm vanity unit with double basins in lieu of standard.
1No. 1200mm x 1210mm aluminium awning window in lieu of standard.
Increase Ensuite and W.I.R. length by 220mm and reduce Bed 1 accordingly.

Laundry Option 01

Provide Laundry upgrade with inset trough in 32mm laminated benchtop.
1No. 300mm base cabinet,
1No. 800mm base cabinets,
1No. 300mm overhead cabinet,
1No. 800mm overhead cabinet and additional tiled splashback and benchtop to suit.

Laundry Option 02

Provide Laundry Upgrade with inset trough in 32mm laminated benchtop.
1No. 900mm base cabinet,
1No. 900mm overhead cabinet and additional tiled splashback and benchtop to suit.

Internal Option 01

Provide Lounge and relocate Bed 1, W.I.R. and Ensuite in lieu of Living and delete 1No. standard window to Ensuite and provide 1No. 1029mm x 610mm aluminium awning window to suit.

Internal Option 02

Provide Real Flame Inspire 900 Gas fireplace, 400mm off floor level in a 1400mm x 500mm boxed out plaster wall with a 4 sided black fascia to Family room side wall with capped gas point, including additional 2No. 1800mm x 850mm aluminium awning windows in lieu of standard.

Internal Option 03

Provide plaster bulkhead 900mm wide opening to W.I.P. in lieu of standard cavity sliding door.

Internal Option 04

Provide 4No. 450mm wide x 32mm thick laminated shelves to Living alcove.

Internal Option 05

Provide cabinet and shelving unit,
3No. 750mm wide base cabinets,
2No. 750mm wide overhead cabinets.
2No. open laminated shelves and 32mm thick laminated benchtop.

Internal Option 06

Provide 150mm plaster feature wall protrusion with a 500mm deep plastered bulkhead.

Garage Option 01

Provide extension to Garage to create additional Storage area.
Increases area by 4.54m².
Increases width by 840mm.

Garage Option 02

Provide extension to Garage to create Storage area including additional 2057mm x 610mm aluminium awning feature window
Increases area by 7.78m².
Increases width by 1440mm.

Garage Option 03

Provide triple car Garage including:
1No. 2290mm x 2410mm Garage door as per colour selection.
Increases area by 24.54m².
Increases width by 3600mm.

