

MYERS 26

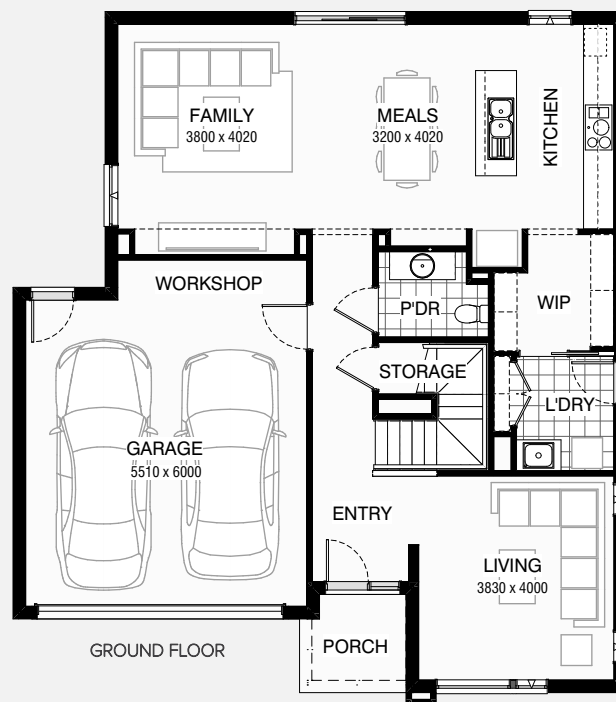
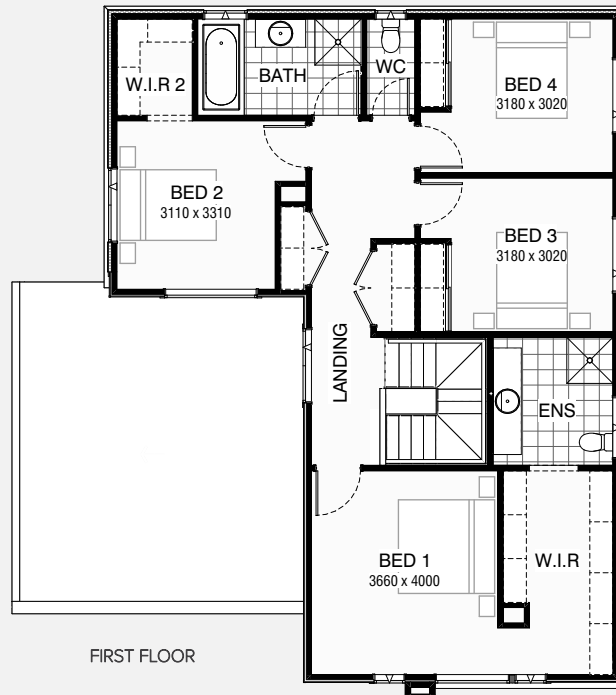
4 2.5 2

Total squares 26.1sq



Minimum Lot Width
14.0m

Minimum Lot Length
21.0m



Design Dimensions
11,990mm(W) x 13,550mm(L).

Facade Choices
Fullerton, Huntington, Moorpark,
Oakwood, Pallsades, Redlands, Riverside.
Details based on Riverside façade floorplan (illustrated)

DESIGN DIMENSIONS

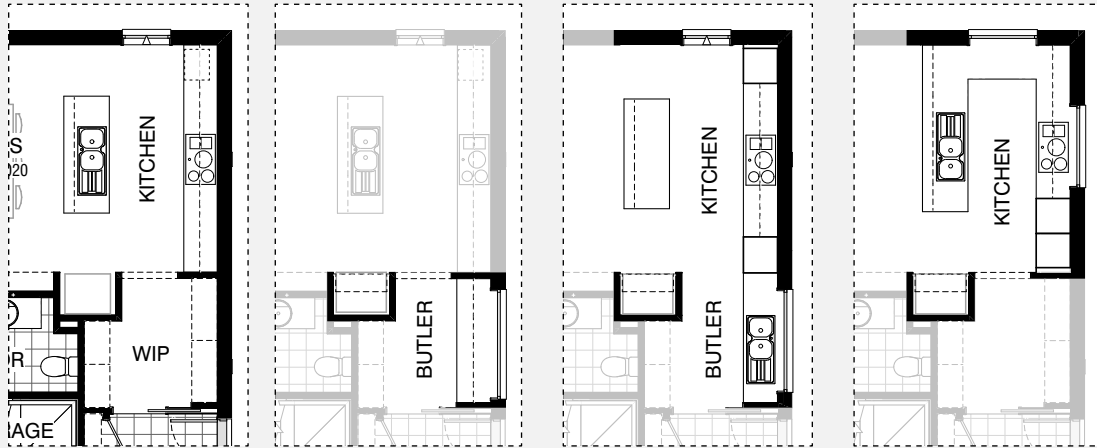
Residence	198.9m ²	21.4sq
Garage	39.5m ²	4.3sq
Porch	3.8m ²	0.4sq
Total	242.2m²	26.1sq



*Copyright conditions. All photos and illustrations are representative only. Floor plans and specifications may be varied by Burbank without notice, the dimensions are diagrammatic only and a Building Contract with final drawings will display correct dimensions and detail. All designs are the property of Burbank and must not be used, reproduced, copied or varied, wholly or in part without written permission from an authorised Burbank representative. Copyright Burbank Australia Pty Ltd. ABN 91 007 099 872. Builders Registration Number CDB-U-52603.



KITCHEN OPTIONS



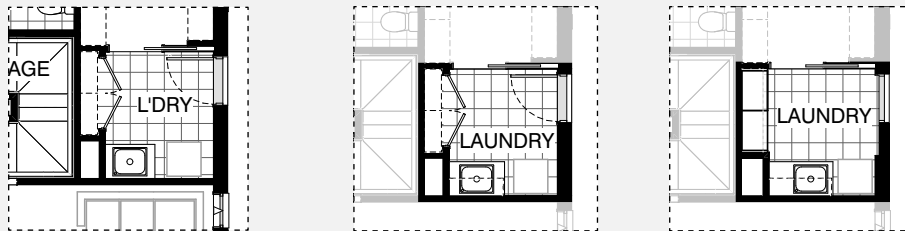
Master Kitchen Design

K01

K02

K03

LAUNDRY OPTION

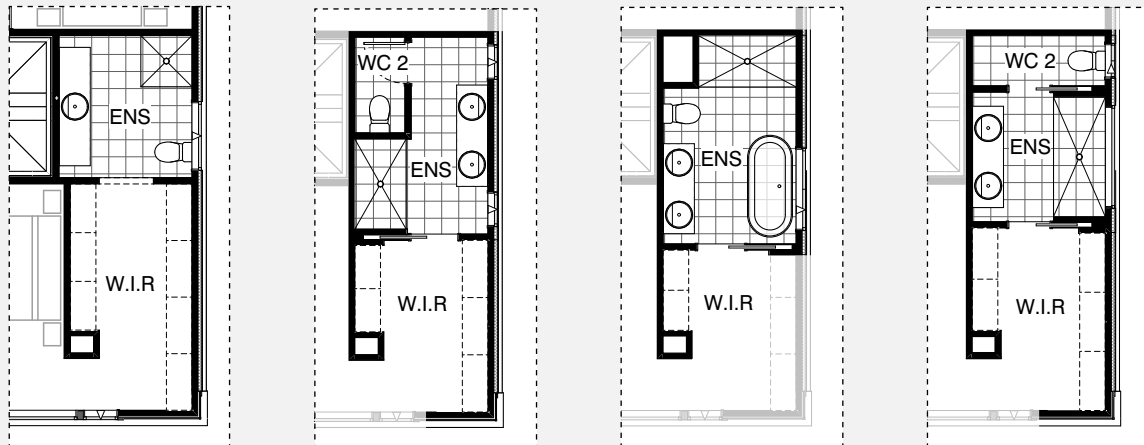


Master Laundry Design

LD01

LD02

ENSUITE OPTIONS



Master Ensuite Design

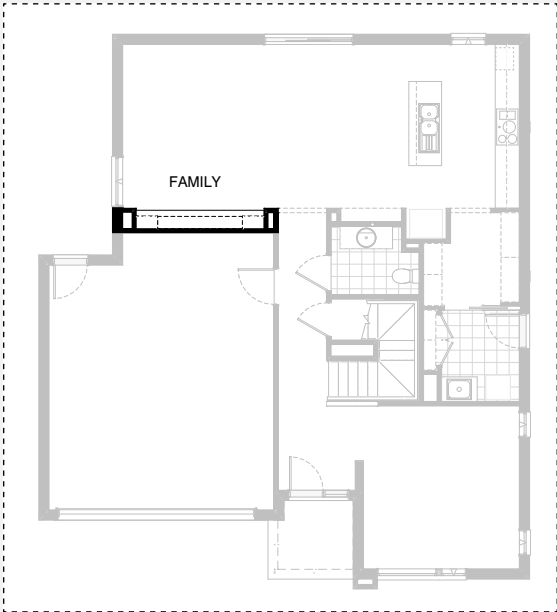
EN01

EN02

EN03

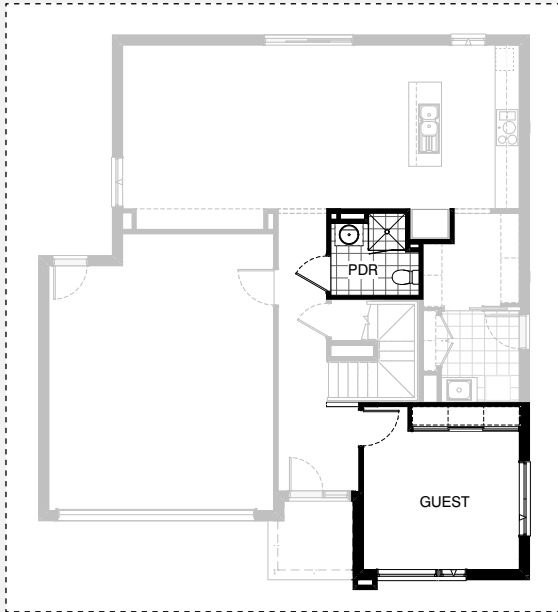


INTERNAL OPTIONS



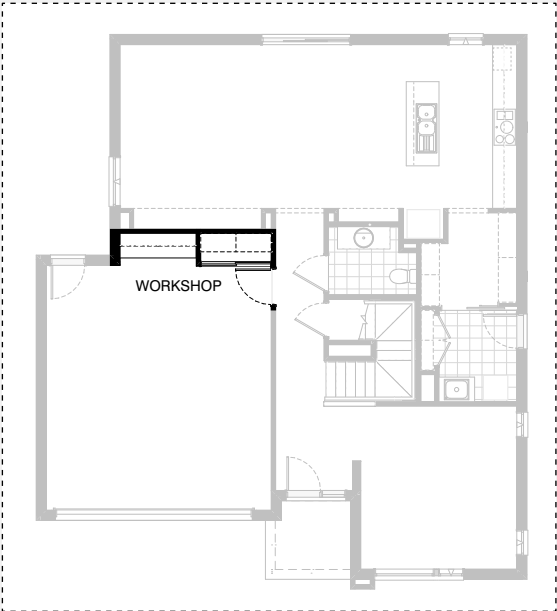
GROUND FLOOR

IN01



GROUND FLOOR

IN02



GROUND FLOOR

IN03

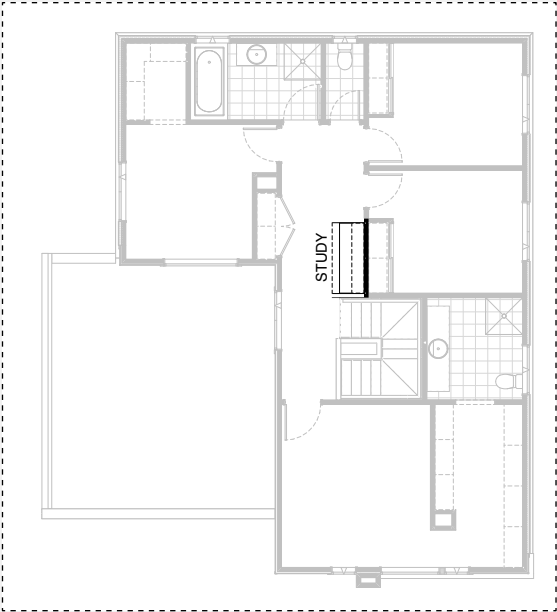


FIRST FLOOR

IN04



INTERNAL OPTIONS



FIRST FLOOR

IN05

MYERS 26

OPTION DESCRIPTIONS

Kitchen Option 01

Provide Butler's Pantry in lieu of Walk-in Pantry, including:
20mm stone benchtop,
1No. 900mm base cupboard,
2No. 600mm base cupboards,
1No. 900mm overhead cupboard,
2No. 600mm overhead cupboards,
additional 514mm x 1930mm aluminium fixed window
1No. open shelf over Ref space.

Kitchen Option 02

Provide Kitchen upgrade option with Butler's, including:
Kitchen:
4No. 900mm base cupboards,
1No. 700mm base cupboard,
1No. 900mm retractable rangehood,
2No. 900mm overhead cupboards,
2No. 600mm oven towers with microwave provisions,
1No. dishwasher provision,
additional 1200mm x 1810mm aluminium fixed window over sink,
1No. open shelf over Ref space,
Island:
1No. 450mm drawer unit,
2No. 700mm base cupboards.

Kitchen Option 03

Provide Kitchen upgrade option with U-shaped benchtop, including:
2No. 900mm corner base cupboards,
2No. 900mm base cupboards,
1No. 600mm base cupboard,
2No. 450mm base cupboards,
1No. 450mm drawer unit,
1No. 900mm retractable rangehood,
1No. 800mm overhead cupboard,
2No. 450mm overhead cupboards,
2No. 600mm oven towers with microwave provisions,
1No. dishwasher provision,
Provide 514mm x 1450mm aluminium fixed window over cooktop
in lieu of standard and
additional 1200mm x 1210mm aluminium fixed window,
1No. open shelf over Ref space.

Laundry Option 01

Provide Laundry upgrade including:
1No. 900mm base cupboard with inset trough,
1No. 900mm overhead cupboard,
32mm laminate benchtop and tiled splashback to suit.

Laundry Option 02

Provide Laundry upgrade option including:
1No. 700mm base cupboard with inset trough,
1No. 350mm base cupboard,
1No. 700mm overhead cupboard,
1No. 350mm overhead cupboard,
2No. 700mm full height laminate cupboards with
5No. 450mm shelves,
32mm laminate benchtop and tiled splashback to suit.

Ensuite Option 01

Provide First floor Ensuite upgrade option, including:
Enclosed WC with 1No. 720 hinged door,
1580mm x 900mm wall to wall tiled shower base,
1No. 1782mm double vanity in lieu of standard,
1No. 820mm cavity sliding door,
2No. 1200mm x 610mm aluminium awning windows
in lieu of standard.
Notes: Ensuite increased by 960mm. Bed 1 decreased by 200mm.

Ensuite Option 02

Provide First Floor Ensuite upgrade option including;
1No. 1700mm freestanding bath tub,
1715mm x 900mm wall-to-wall tiled shower base and
Void to accommodate,
1No. 1582mm vanity with double basins in lieu of standard,
1No. 820mm cavity sliding door,
1No. 1200mm x 1450mm aluminium awning window
in lieu of standard.
Notes:
Ensuite increased by 1160mm.
Bed 1 decreased by 200mm.

Ensuite Option 03

Provide First Floor Ensuite upgrade option including;
Enclosed WC with 1No. 720 cavity sliding door,
2100mm x 910mm wall-to-wall tiled shower base,
1No. 1782mm vanity with double basins in lieu of standard,
1No. 720mm cavity sliding door,
1No. 350mm x 1810mm aluminium fixed window
in lieu of standard,
1No. 1029mm x 610mm aluminium awning window to WC.
Notes: Ensuite increased by 770mm. Bed 1 decreased by 200mm.

Internal Option 01

Provide built-in joinery option to Family, including:
450mm deep 32mm thick benchtop,
3No. 1000mm T.V cupboard units,
2No. 450mm open shelf units with bulkheads,
2No. 300mm deep 60mm thick open shelves over.

Internal Option 02

Provide Guest Bedroom option in lieu of Living room with
built-in Robe, sliding doors,
450mm shelf with hanging rail and
1No. 870mm hinged door.
Provide 1No. 514mm x 1810mm aluminium awning window
in lieu of 2No. standard windows.
Provide larger Powder room with
900mm x 900mm recessed tiled shower base in lieu of Nook.
Note: REF. space slightly relocated.

Internal Option 03

Provide Storage option to Garage including:
additional built-in Linen with
4No. 450mm shelves and sliding doors.
2No. 900mm base cupboards,
2No. 900mm overhead cupboards,
32mm laminate benchtop and tiled splashback to suit.

Internal Option 04

Provide First floor Bathroom upgrade option including;
1200mm x 900mm tiled shower base,
1No. 782mm vanity,
1No. 1500mm back to wall freestanding bath,
in lieu of standard.

Internal Option 05

Provide First floor Study Nook in lieu of Linen to
first floor passage with built-in joinery, including:
600mm deep 32mm thick laminate bench top desk,
2No. 300mm deep 60mm thick open shelves over desk,
Additional bulkhead over desk area.
Notes:
Remove existing Linen.

