

Facades available:	
Coastal, Delta, Kingston, Nouveau	
Salisbury, Traditional, York	
Overall home width	11.27m
Overall home length	16.84m

Residence	108.3m ²	11.7sq
Garage	37.4m ²	4.0sq
Porch	3.4m ²	0.4sq
Alfresco	12.0m ²	1.3sq
Total	161.1m²	17.4sq

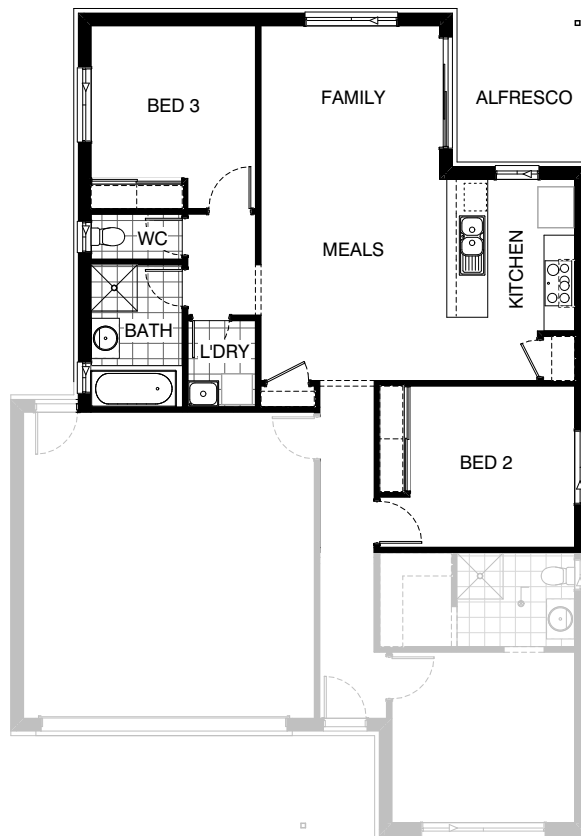
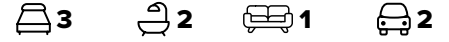
FLOORPLAN OPTIONS

We personalise our floorplans. Talk to us about our huge range of ready-to-go design options.

Listed details based on Traditional facade floorplan (illustrated)

*Copyright conditions. All photos and illustrations are representative only. Floor plans and specifications may be varied by Burbank without notice, the dimensions are diagrammatic only and a Building Contract with final drawings will display correct dimensions and detail. All designs are the property of Burbank and must not be used, reproduced, copied or varied, wholly or in part without written permission from an authorised Burbank representative. Copyright Burbank Australia (QLD) Pty Ltd. ABN 77 103 014 615. QBCC 1046544.

Call 13 BURBANK
Visit burbank.com.au



Option External01

Provide Alternate floor plan layout option to be used for 12.5m x 20m block size ONLY.

Option rearranges layout as shown to accommodate.