

**Facades available:**

Coastal, Delta, Kingston, Nouveau	
Salisbury, Traditional, York	
<b>Overall home width</b>	<b>10.91m</b>
<b>Overall home length</b>	<b>23.51m</b>

Residence	166.8m <sup>2</sup>	18.0sq
Garage	43.7m <sup>2</sup>	4.7sq
Porch	2.0m <sup>2</sup>	0.2sq
Alfresco	11.2m <sup>2</sup>	1.2sq
<b>Total</b>	<b>223.7m<sup>2</sup></b>	<b>24.1sq</b>

**FLOORPLAN OPTIONS**

We personalise our floorplans. Talk to us about our huge range of ready-to-go design options.

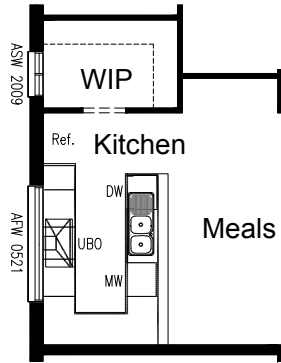
Listed details based on Traditional facade floorplan (illustrated)

\*Copyright conditions. All photos and illustrations are representative only. Floor plans and specifications may be varied by Burbank without notice, the dimensions are diagrammatic only and a Building Contract with final drawings will display correct dimensions and detail. All designs are the property of Burbank and must not be used, reproduced, copied or varied, wholly or in part without written permission from an authorised Burbank representative. Copyright Burbank Australia (QLD) Pty Ltd. ABN 77 103 014 615. QBCC 1046544.

**Call 13 BURBANK**  
**Visit [burbank.com.au](http://burbank.com.au)**

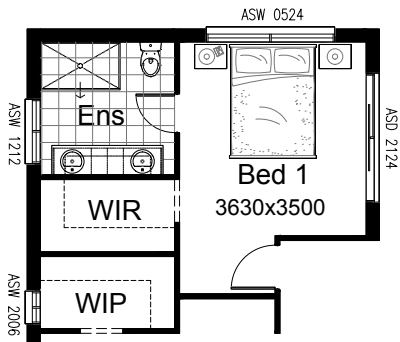
**OPTION K1**

Provide U-shaped Kitchen upgrade including 900mm canopy rangehood, 900mm electric cooktop, 600mm under bench oven, 450mm drawer unit, dishwasher provision, microwave provision with pot drawer, 1000mm base cupboard, 2No. 900x900mm base corner cupboards, 2No. 700mm base cupboards, 600mm base cupboard, additional bench top and tiled splashback to suit.



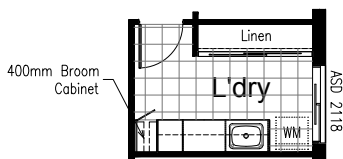
**OPTION ENS1**

Provide Ensuite upgrade including 1500x900mm tiled shower base and 2082mm vanity with drawers and 2No. basins. Move ASW1212 window as shown. Decreases WIR and WIP widths to 1350mm each. Replace ASW2009 window to WIP with ASW2006 as shown.



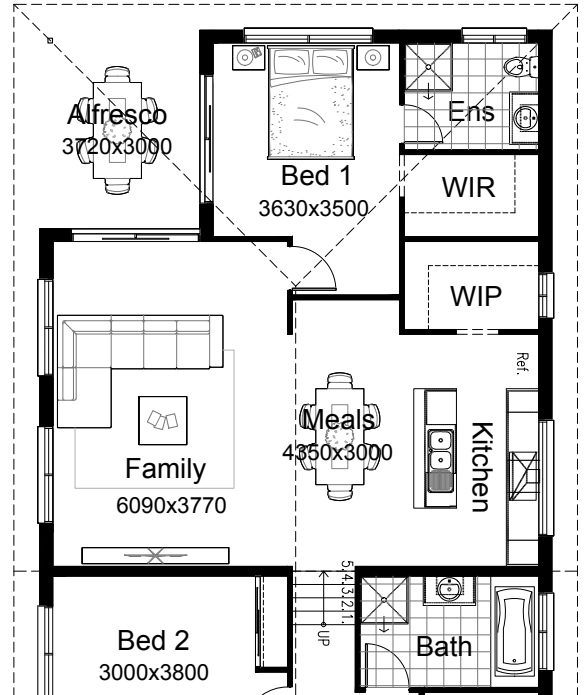
**OPTION LD1**

Provide Laundry upgrade including laminate base cupboards and stainless steel inset trough including 2No. 800mm base cupboards, 450mm base cupboard, 2No. 800mm overhead cupboards and 450mm overhead cupboard, 400mm broom cabinet, additional benchtop and tiled splashback to suit.



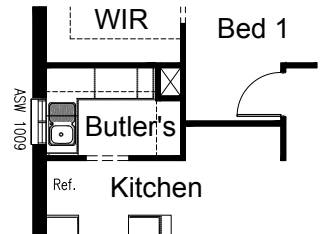
**OPTION EP1**

Provide Floor Plan option including a mirrored rear section of the home.



**OPTION K2**

Provide Butler's Pantry Kitchen upgrade including standard Kitchen inclusions plus 1No. single bowl sink, 900x900mm base corner cupboard, 800mm base cupboard, 700mm base cupboard, 300mm base cupboard, 450mm open shelves as shown, additional bench top and tiled splashback to suit. Replace ASW2009 window with ASW1009.



**OPTION ENS2**

Provide Ensuite upgrade including 900x900mm tiled shower base and 1282mm vanity with 2No. basins, 1675mm bath and move toilet pan to new location. Move ASW1212 window as shown. Increases WIR to 1800mm wide with additional ASW2006 window. WIP becomes standard Pantry with sliding doors.

