

Facades available:	
Coastal, Delta, Kingston, Nouveau	
Salisbury, Traditional, York	
Overall home width	12.35m
Overall home length	20.84m

Residence	168.2m ²	18.1sq
Garage	38.7m ²	4.2sq
Porch	5.6m ²	0.6sq
Alfresco	12.5m ²	1.4sq
Total	225.1m²	24.2sq

FLOORPLAN OPTIONS

We personalise our floorplans. Talk to us about our huge range of ready-to-go design options.

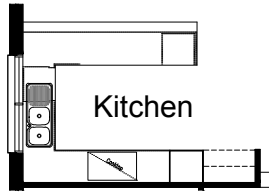
Listed details based on Traditional facade floorplan (illustrated)

*Copyright conditions. All photos and illustrations are representative only. Floor plans and specifications may be varied by Burbank without notice, the dimensions are diagrammatic only and a Building Contract with final drawings will display correct dimensions and detail. All designs are the property of Burbank and must not be used, reproduced, copied or varied, wholly or in part without written permission from an authorised Burbank representative. Copyright Burbank Australia (QLD) Pty Ltd. ABN 77 103 014 615. QBCC 1046544.

Call 13 BURBANK
Visit burbank.com.au

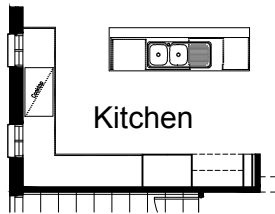
OPTION A

Provide Kitchen redesign by providing U-Shaped Kitchen in lieu of island bench. Provide laminated open shelf to Refrigerator space, laminated 600mm tall pantry, 2no. 150mm base cupboards to either side of under bench oven, 1no. 600 base cupboard, 2no. 900mm base cupboards, 2no. 1050mm blind carcass with 600mm laminated door. Provide additional 1200x1810 aluminium sliding window in lieu of standard 2100x910 aluminium sliding window. Relocate MW space, dishwasher and 450mm drawers with additional tiled splashback and bench top to suit.



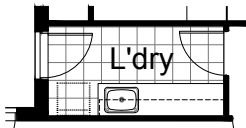
OPTION B

Provide Kitchen upgrade by deleting 1no. 400mm base cupboard to island bench. Relocate under bench oven and range hood and provide 2no. 1200x610 aluminium sliding windows to either side of Canopy in lieu of 1no. 2100x910 aluminium sliding window. Provide floor to ceiling wine rack with laminated open shelf to Refrigerator space. Delete site built plaster lined stud walls and 1no. 620mm laminated door to Pantry cupboard and provide 900mm laminated tall pantry. Additional 3no. 800mm base cupboards and 1no. 1050mm blind carcass with 600mm cupboard door, 2no. 150mm base cupboards either side of oven and additional bench top and tiled splashback to suit.



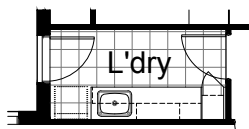
OPTION C

Provide prefabricated laminated laundry trough cabinet with insert trough including additional benchtop, overhead and base cupboards with additional tiled splashback and delete site built plaster lined stud walls and 2no. sliding doors to Linen cupboard.



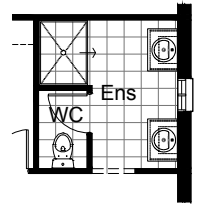
OPTION D

Provide prefabricated laminated laundry trough cabinet with insert trough including additional bench top and tiled splashback to suit, additional laminated overhead and base cupboards and laminated open shelf with 1no. hanging rail and delete site built plaster lined stud walls and 2no. sliding doors to Linen cupboard.



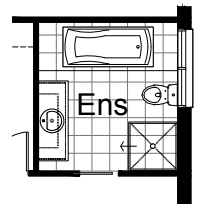
OPTION E

Provide Ensuite upgrade with additional 1200mm x 900mm tiled shower base in lieu of 1000mm x 1000mm tiled shower base. Enclose and relocate toilet in site built plastered walls with 720mm hinged door. Provide 2no. 782mm wide vanity basins in lieu of 1482mm vanity basin.



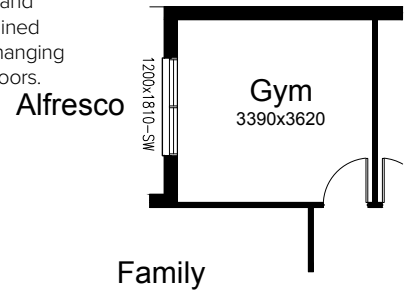
OPTION F

Provide Ensuite upgrade by providing additional bath tub and tiled hob. Relocate toilet and vanity basin to suit. Provide 900mm x 900mm tiled shower base I.L.O 1000x1000 and provide 1no. 900x1510 aluminium sliding window in lieu of 1no. 1800x610 aluminium sliding window and delete 720mm flush panel hinged door and provide 720mm cavity sliding door.



OPTION G

Provide Gym Option in lieu of Bed 4. Relocate window and remove site built plaster lined robe with 1no. shelf and hanging rail and 2400(h) sliding doors.



OPTION H

Provide Grand Alfresco under dwelling roof line with additional 3no. brick piers in lieu of standard 1no. 90mm x 90mm timber post. Increases area by 12.21m². Increases length by 3000mm.

