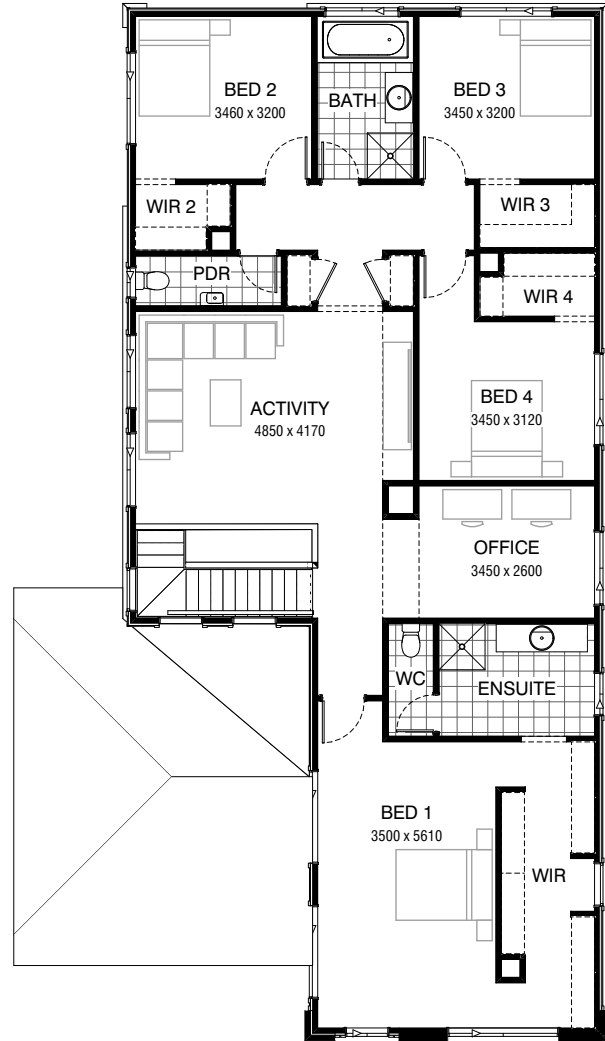


GROUND FLOOR



FIRST FLOOR

Facades available:

Kingston, Kingsley, Bradshaw	Residence	298.6m ²	32.1sq
Bradbury, Nouveau, Traditional	Garage	37.9m ²	4.1sq
Urban	Porch	3.5m ²	0.4sq
Overall home width	11.75m	Alfresco	14.3m ² 1.5sq
Overall home length	20.27m	Total	354.3m² 38.1sq

FLOORPLAN OPTIONS

We personalise our floorplans. Talk to us about our huge range of ready-to-go design options.

Listed details based on Traditional facade floorplan (illustrated)



Option Kitchen01 GF

Provide Kitchen upgrade option which adds
2no. 600mm overhead cupboards and
1no. 900mm open shelf above Ref space.
Island bench and sink bench unchanged.



Option Kitchen02 GF

Provide Butler's Pantry upgrade option which adds
2no. 800mm base cupboards,
1no. single bowl sink with drainer,
additional tiled splashback and benchtop to suit.
This option decreases the Family by 140mm in width and



Option Kitchen03 GF

Provide L-shaped Kitchen upgrade option which adds
 2no. 600mm overhead cupboards and
 1no. 900mm open shelf above Ref space.
 L-shaped bench includes
 1no. 450mm drawer unit,
 1no. 450mm base cupboard,
 1no. 900mm base cupboard,
 1no. dishwasher provision,
 1no. microwave provision with pot drawer,
 1no. 900mm corner base cupboard,
 2no. 700mm base cupboards with
 additional benchtop and tiled splashback to suit.
 Option also provides AFW1218 in lieu of standard.



Option Kitchen04 GF

Provide Kitchen bulkhead and timber ceiling upgrade option.

Option Kitchen04 only available with Standard Kitchen, Option Kitchen01 and Option Kitchen03



Option Kitchen05 GF

Provide Kitchen upgrade option with rearranged layout including
2no. 700mm base cupboards,
1no. 900mm base cupboard,
2no. 700mm overhead cupboards with additional benchtop and tiled splashback to suit.



Option Kitchen06 GF

Provide Kitchen upgrade option with rearranged layout including

- 2no. 700mm base cupboards,
- 1no. 900mm base cupboard,
- 2no. 700mm overhead cupboards with additional benchtop and tiled splashback to suit.
- 1no. 1000mm open shelf above Ref space and
- 2no. oven towers with 600mm ovens and microwave provisions.

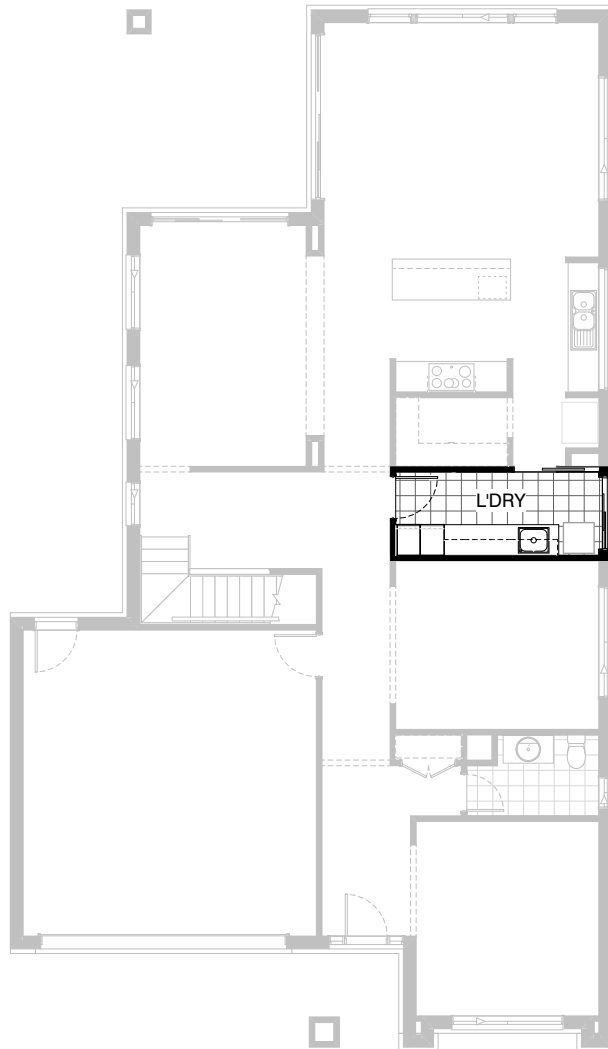
Island bench includes

- 1no. 450mm drawer unit,
- 1no. dishwasher provision,
- 1no. 900mm base cupboard and
- 1no. 450mm base cupboard.

Butlers Pantry includes

- 2no. 900mm base cupboards,
- 1no. 800mm base cupboard,
- 2no. 900mm overhead cupboards,
- 1no. 800mm overhead cupboard,
- 1no. single bowl sink with drainer,
- additional tiled splashback and benchtop to suit.

Option also provides a study nook area, AFW 514 x 2410 in lieu of standard, decreases the Family by 120mm in width and deletes cavity sliding door to WIP / Laundry.

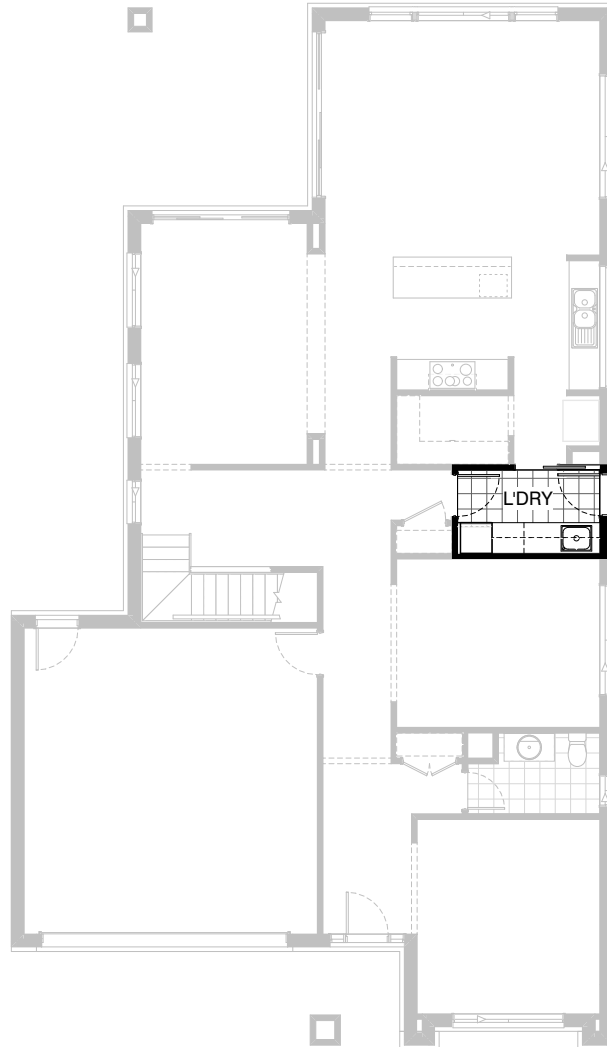


Option Laundry01 GF

Provide Laundry upgrade option including laminate cupboards and stainless steel inset trough including

- 2no. 900mm base cupboards,
- 1no. 400mm base cupboard,
- 2no. 900mm overhead cupboards,
- 1no. 400mm overhead cupboard,
- 1no. 450mm full height laminate Linen cupboard,
- 1no. 450mm full height laminate Broom cupboard,

additional benchtop and tiled splashback to suit.
Extend Laundry by deleting Linen Cupboard from Passage.



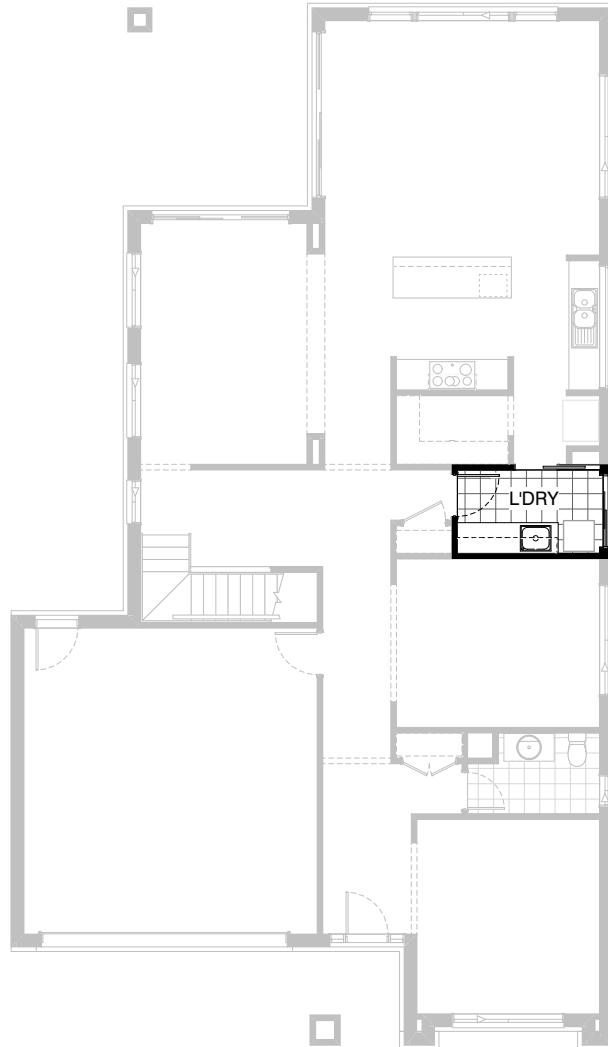
Option Laundry02 GF

Provide Laundry upgrade option including laminate cupboards and stainless steel inset trough including

- 1no. 800mm base cupboard,
- 2no. 800mm overhead cupboards,
- 1no. 450mm overhead cupboard,
- 1no. 600mm full height laminate Linen cupboard, additional benchtop and tiled splashback to suit.

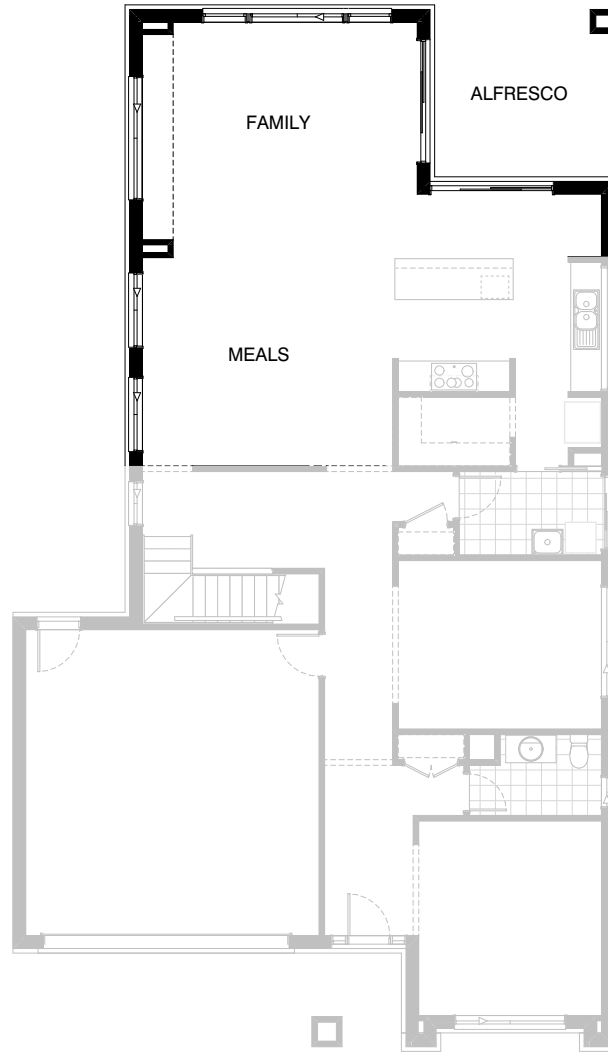
Option also provides AED2108 external access door in lieu of ASD2115 sliding door.

Increase kicker height of base cabinets by 50mm to increase the overall height of the benchtop to 955mm to accommodate washing machine and dryer beneath side-by-side.



Option Laundry03 GF

Provide Laundry upgrade option including laminate cupboards and stainless steel inset trough including
2no. 800mm base cupboards,
2no. 800mm overhead cupboards,
1no. 300mm base cupboard,
1no. 300mm overhead cupboard,
additional benchtop and tiled splashback to suit.



Option External01 GF

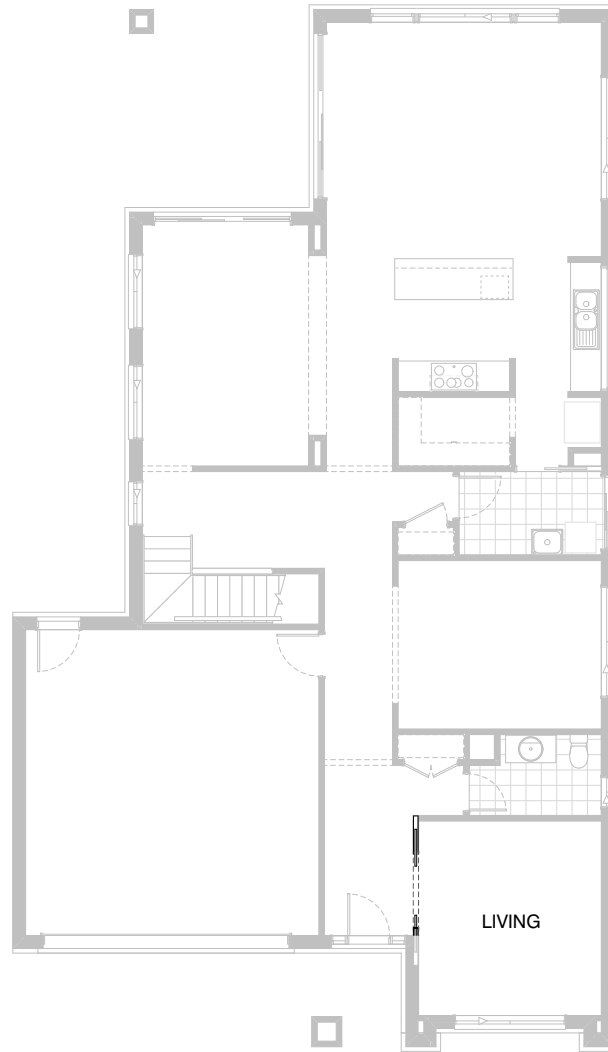
Provide mirrored Family and Alfresco option.
This option decreases Alfresco by 600mm in width
and provides 2no. ASD 2110 x 2410 in lieu of standard.



Option Internal01 GF

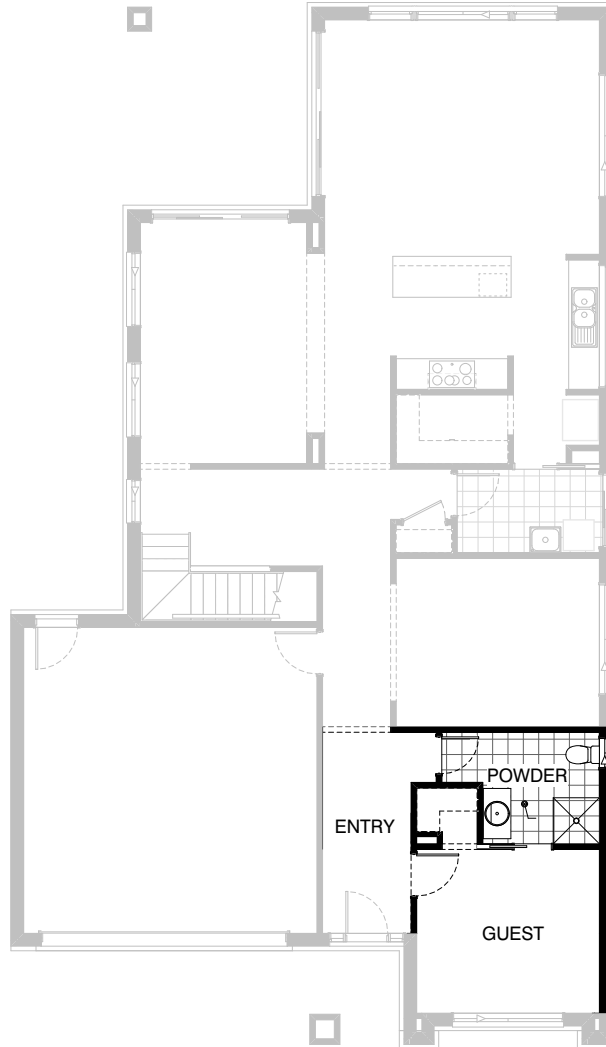
Provide built-in joinery upgrade option to Family with
450mm deep 32mm laminate benchtop.
2no. 1000mm T.V cabinet cupboards and
3no. 900mm T.V cabinet cupboards.

Option Internal01 only available with Option Kitchen03



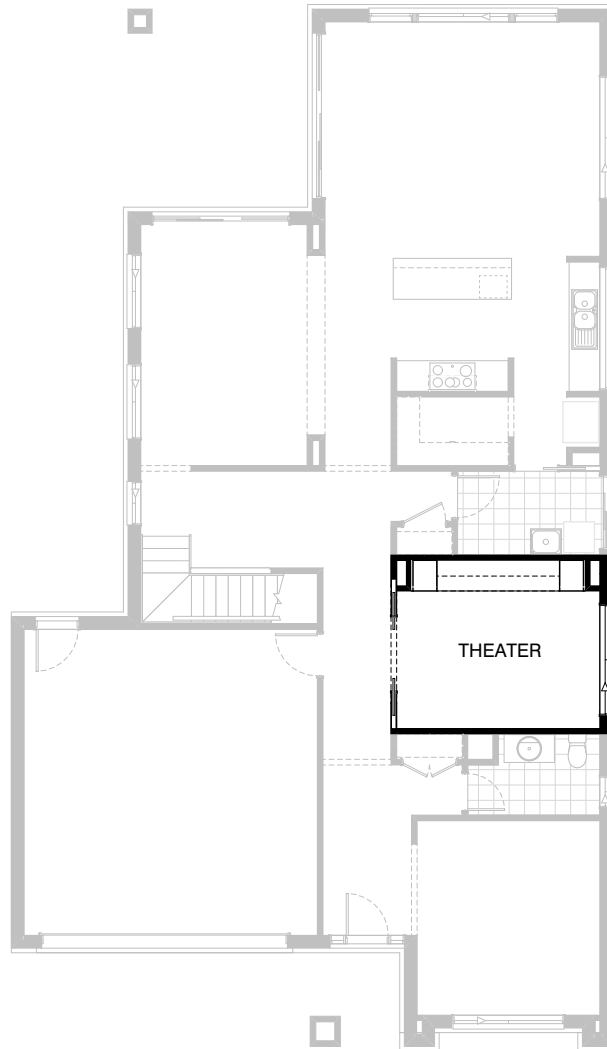
Option Internal02 GF

Provide 2no. 720mm wide cavity sliding doors
in lieu of bulkhead opening to Living



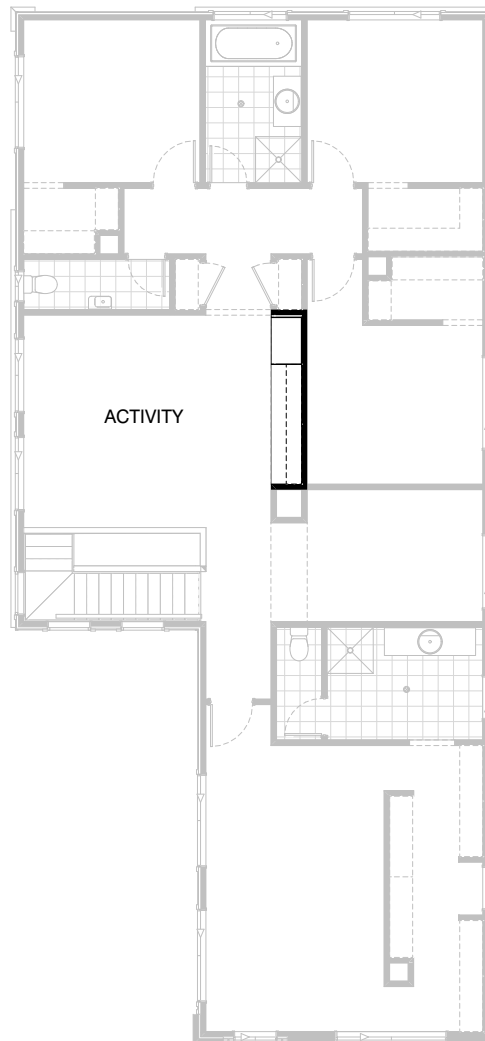
Option Internal03 GF

Provide Guest Bed option with
2-way Pdr / Ensuite in lieu of Living.
Option includes 820mm hinged door
in lieu of bulkhead opening
and built-in WIR with bulkhead opening.
Rearrange Pdr to accommodate
additional 900x900 tiled shower base and
720mm cavity sliding door to Pdr / Ensuite.
Coats to Entry passage to be deleted.
Provide ASW 1027 x 610 in lieu of standard.



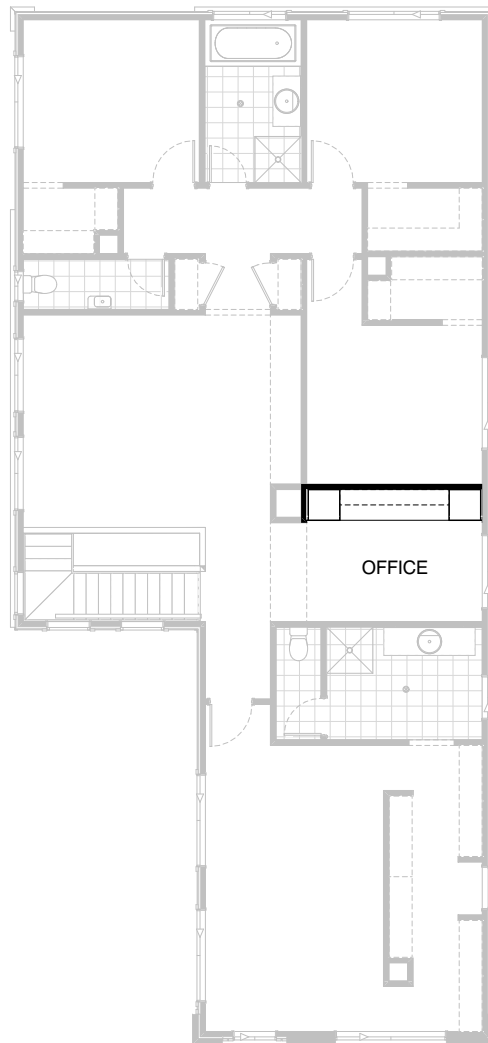
Option Internal04 GF

Provide built-in joinery upgrade option to Theatre with 600mm deep 32mm laminate benchtop including 3no. 800mm T.V cabinet cupboards, 3no. 800mm overhead cupboards and 2no. 450mm full height laminate Store cupboards. This option also provides 2no. 720mm wide cavity sliding doors in lieu of bulkhead opening and moves existing window to accommodate.



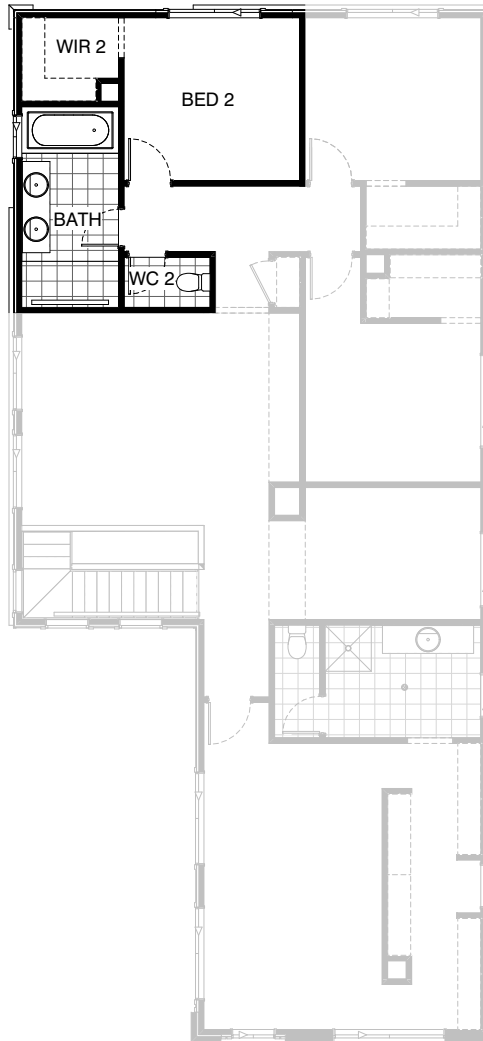
Option Internal05 FF

Provide built-in joinery upgrade option to Activity with 600mm deep 32mm laminate benchtop including
1no. 700mm T.V cabinet cupboard,
2no. 800mm T.V cabinet cupboards,
2no. full-width 300mm deep open shelves above and
1no. 900mm full height laminate Store cupboard.



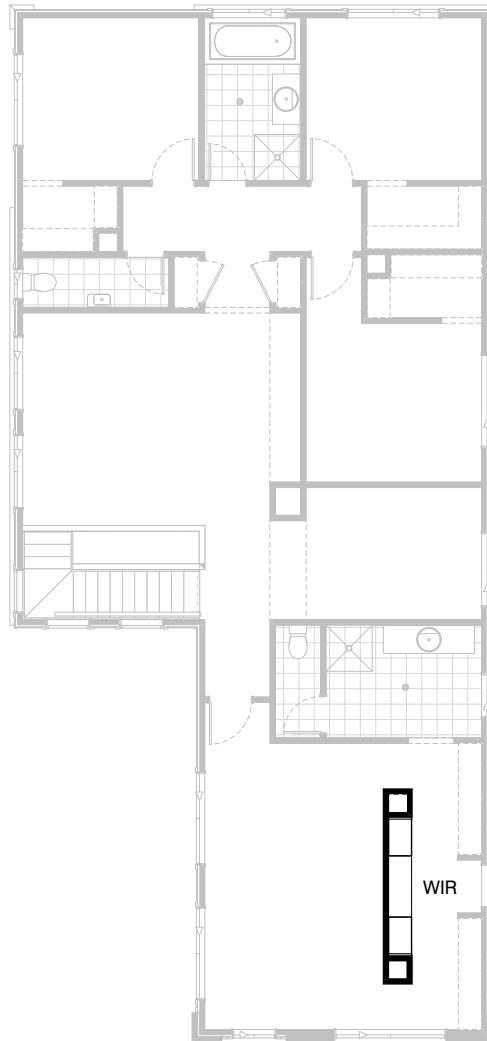
Option Internal06 FF

Provide built-in joinery upgrade option to Office with 600mm deep 32mm laminate benchtop including 2no. full-width 300mm deep open shelves above and 2no. 600mm full height laminate Store cupboards.



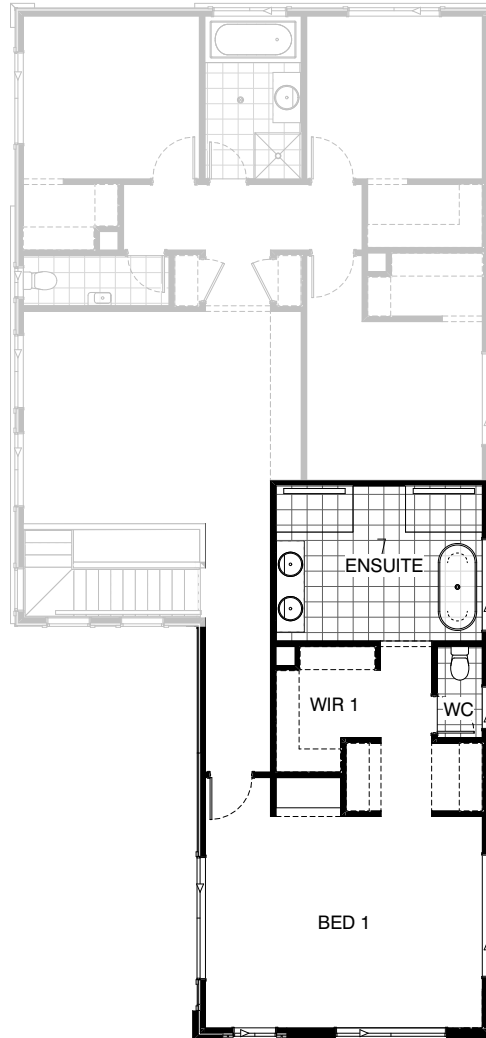
Option Internal07 FF

Provide Bathroom upgrade option with rearranged layout including 900 x 1910 wall to wall tiled shower base with grate drain in lieu of standard, 1no. 1782mm wide vanity unit with 2no. basins in lieu of standard and ASW 1200 x 850 in lieu of standard. This option deletes a Linen cupboard from the passage, wall vanity and window to the Powder.



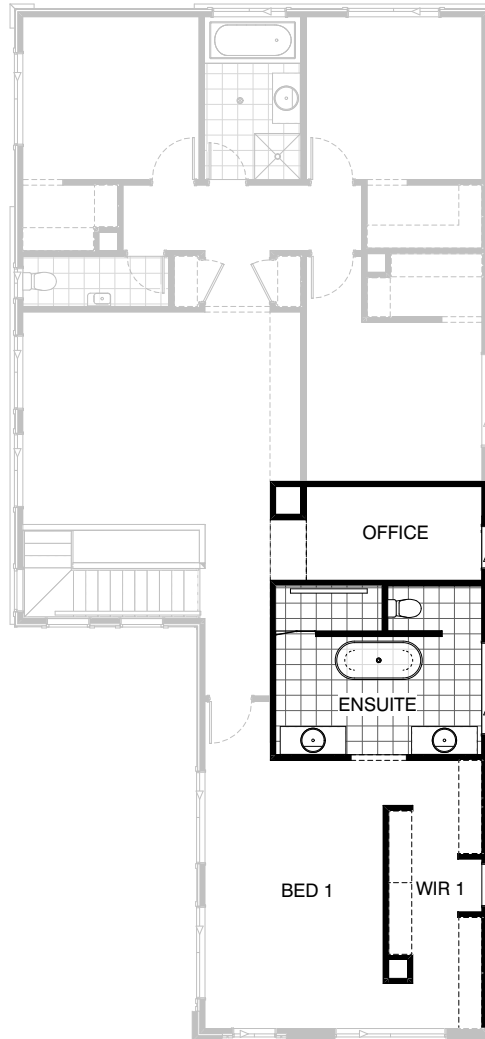
Option Internal08 FF

Provide built-in joinery upgrade option to WIR with 450mm deep 32mm laminate benchtop and 2no. Full height laminate 700mm wide 450mm deep cupboards with 3No. drawer units.



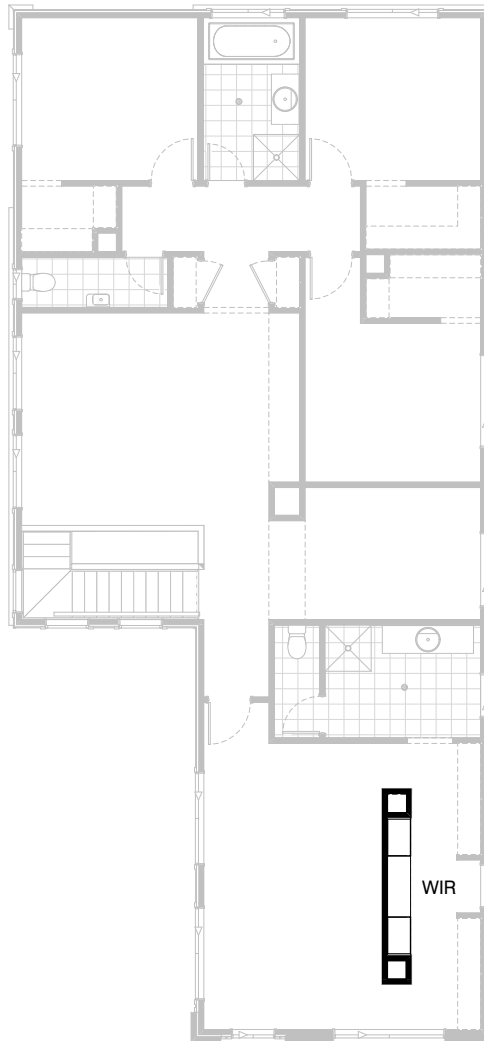
Option Internal09 FF

Provide Master Suite upgrade option by relocating Ensuite to Office location and WIR to Ensuite location. Provide dressing area with laminated bench, additional hanging space with 2 nooks, wc relocation, freestanding bath to ensuite, 2no. 900mm x 1500mm tiled shower bases with grate drain and 1no. 1782mm wide vanity unit with 2no. basins. Option also provides 2no. ASW 514 x 2410 to Bed 1, ASW 1800 x 850 to WC and ASW 1200 x 1810 to Ensuite.



Option Ensuite01 FF

Provide Ensuite upgrade option by increasing Ensuite in width by 1100mm.
Reduce WIR and Bed 1 by 350mm and Office by 750mm.
Provide 900 x 2100 wall to wall tiled shower base with grate drain in lieu of standard,
2no. 1282mm wide vanity units in lieu of standard and additional freestanding bath.
Option also provides ASW 2057 x 850 in lieu of standard to Office and ASW 1200 x 1810 in lieu of standard to Ensuite.



Option Internal08 FF

Provide built-in joinery upgrade option to WIR with 450mm deep 32mm laminate benchtop and 2no. Full height laminate 700mm wide 450mm deep cupboards with 3No. drawer units.