

Facades available:	
Coastal, Delta, Kingston, Nouveau	
Salisbury, Traditional, York	
Overall home width	12.47m
Overall home length	23.03m

Residence	183.9m ²	19.8sq
Garage	38.8m ²	4.2sq
Porch	5.7m ²	0.6sq
Alfresco	14.0m ²	1.5sq
Total	242.4m²	26.1sq

FLOORPLAN OPTIONS

We personalise our floorplans. Talk to us about our huge range of ready-to-go design options.

Listed details based on Traditional facade floorplan (illustrated)

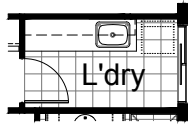
*Copyright conditions. All photos and illustrations are representative only. Floor plans and specifications may be varied by Burbank without notice, the dimensions are diagrammatic only and a Building Contract with final drawings will display correct dimensions and detail. All designs are the property of Burbank and must not be used, reproduced, copied or varied, wholly or in part without written permission from an authorised Burbank representative. Copyright Burbank Australia (QLD) Pty Ltd. ABN 77 103 014 615. QBCC 1046544.

Call 13 BURBANK
Visit burbank.com.au



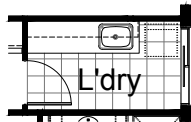
OPTION LD1

Provide prefabricated laminated laundry trough cabinet with insert trough including additional benchtop, overhead and base cupboards with additional tiled splashback. Linen cupboard to Passage reduces by 280mm to accommodate.



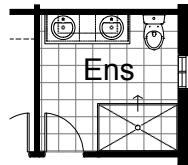
OPTION LD2

Provide prefabricated laminated laundry trough cabinet with insert trough including additional bench top and tiled splashback to suit, laminated overhead and base cupboards and laminated open shelf with 1No. hanging rail. Linen cupboard to Passage reduces by 280mm to accommodate.



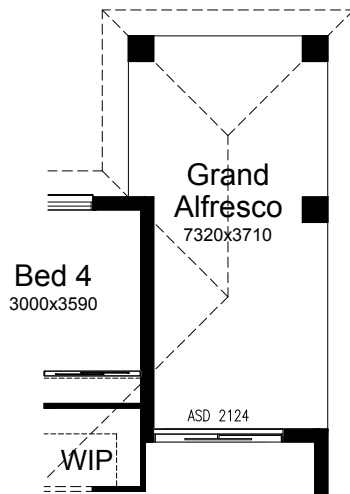
OPTION ENS1

Provide Ensuite upgrade by relocating toilet and shower position and providing 1582mm vanity with double basin in lieu of standard 1482mm vanity and 900mm x 1500mm tiled shower base in lieu of standard 900mm x 900mm tiled shower base.



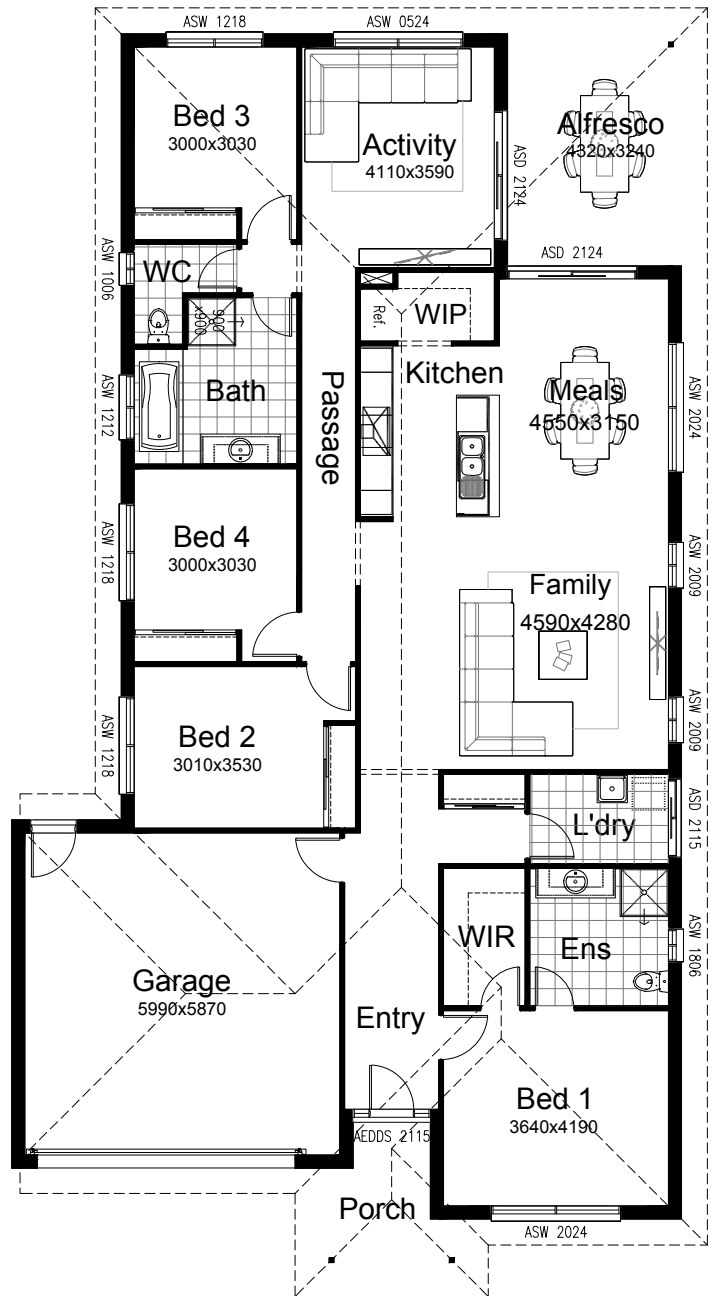
OPTION EP2

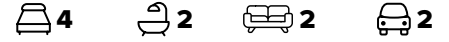
Provide Grand Alfresco option including tiled roof, structural concrete slab and 3No. 470x470mm brick piers. Adds 3000mm of length to the building footprint.



OPTION IP1

Provide floor plan option with rearranged Activity and Bed 4 locations. Updated Kitchen includes Walk-in Pantry with Refrigerator Space, 900mm canopy rangehood, 900mm electric cooktop, 600mm under bench oven, 450mm drawer unit, dishwasher provision, microwave provision with pot drawer, 900mm base cupboard, 2No. 800mm base cupboards, 450mm base cupboard, bench top and tiled splashback adjusted to suit. Replace windows as shown and add ASD 2124 sliding door to Activity. Bulkhead added to opening to Bed 3 and WC.





OPTION IP2

Provide floor plan option replacing Activity with Bed 5 adding stud and plaster walls with 820 hinged door and Robe with sliding doors. Replace ASW1024 with ASW1218.

