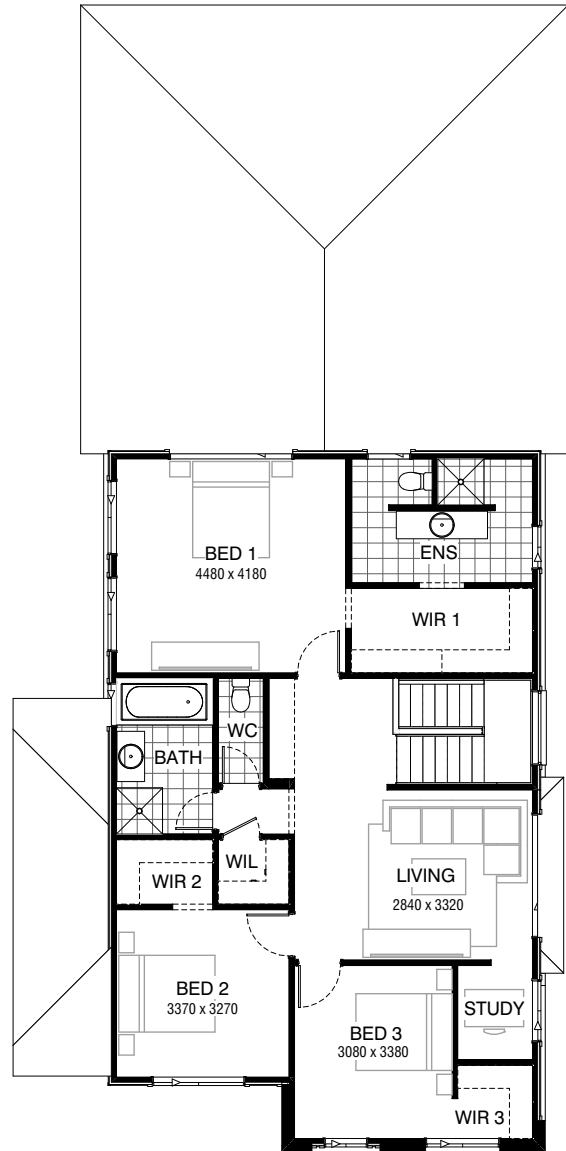


GROUND FLOOR



FIRST FLOOR

FLOORPLAN OPTIONS

We personalise our floorplans. Talk to us about our huge range of ready-to-go design options.

Facades available:

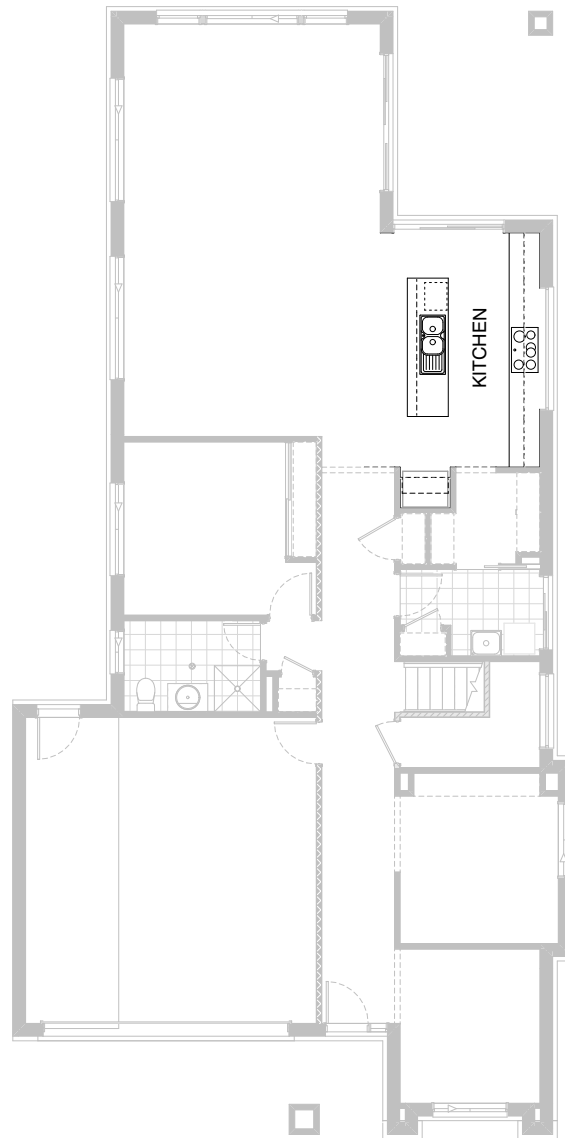
Kingston, Kingsley, Bradshaw	
Bradbury, Nouveau, Traditional	
Urban	
Overall home width	10.91m
Overall home length	21.95m

Residence	250.8m ²	27.0sq
Garage	37.5m ²	4.0sq
Porch	3.7m ²	0.4sq
Alfresco	12.7m ²	1.4sq
Total	304.8m²	32.8sq

Listed details based on Traditional facade floorplan (illustrated)

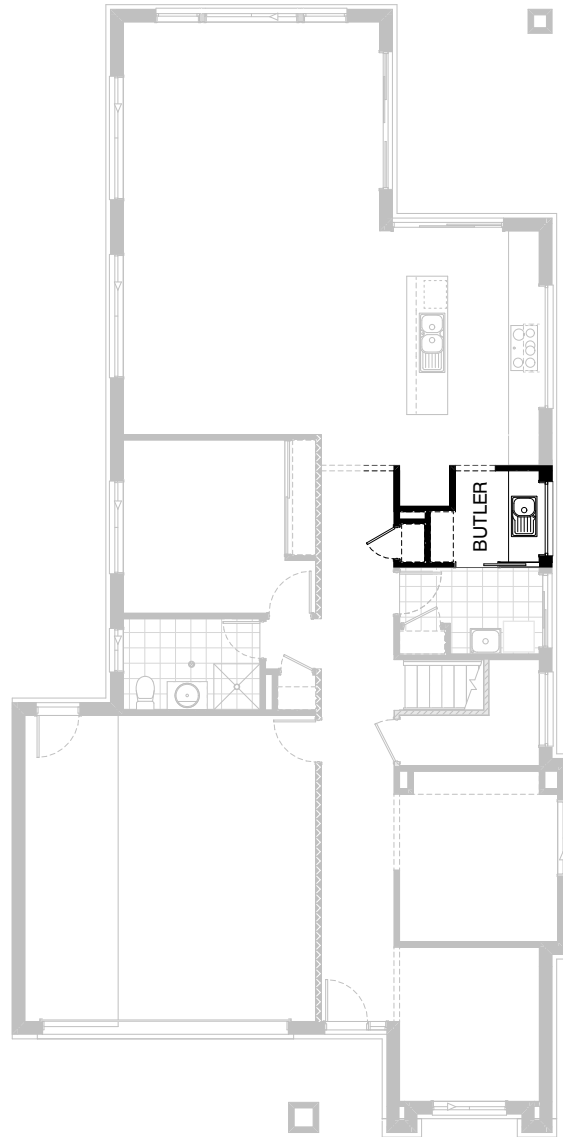
*Copyright conditions. All photos and illustrations are representative only. Floor plans and specifications may be varied by Burbank without notice, the dimensions are diagrammatic only and a Building Contract with final drawings will display correct dimensions and detail. All designs are the property of Burbank and must not be used, reproduced, copied or varied, wholly or in part without written permission from an authorised Burbank representative. Copyright Burbank Australia (QLD) Pty Ltd. ABN 77 103 014 615. QBCC 1046544.

Call 13 BURBANK
Visit burbank.com.au



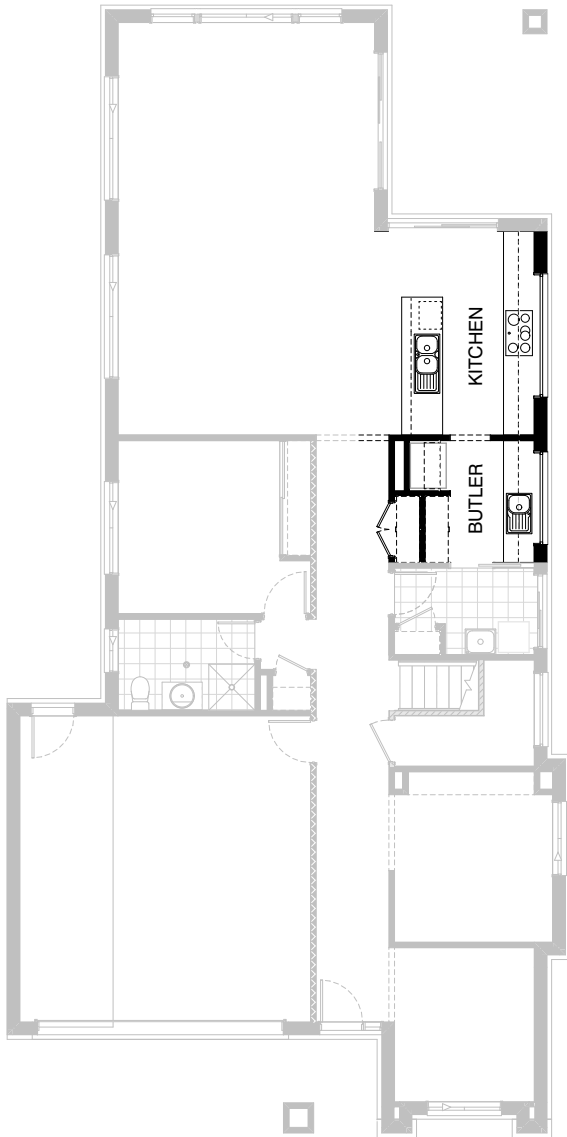
Option Kitchen01

Provide Kitchen upgrade option which adds
4No. 900mm overhead cupboards and
1No. 900mm open shelf above Ref space.
Island bench to remain standard.



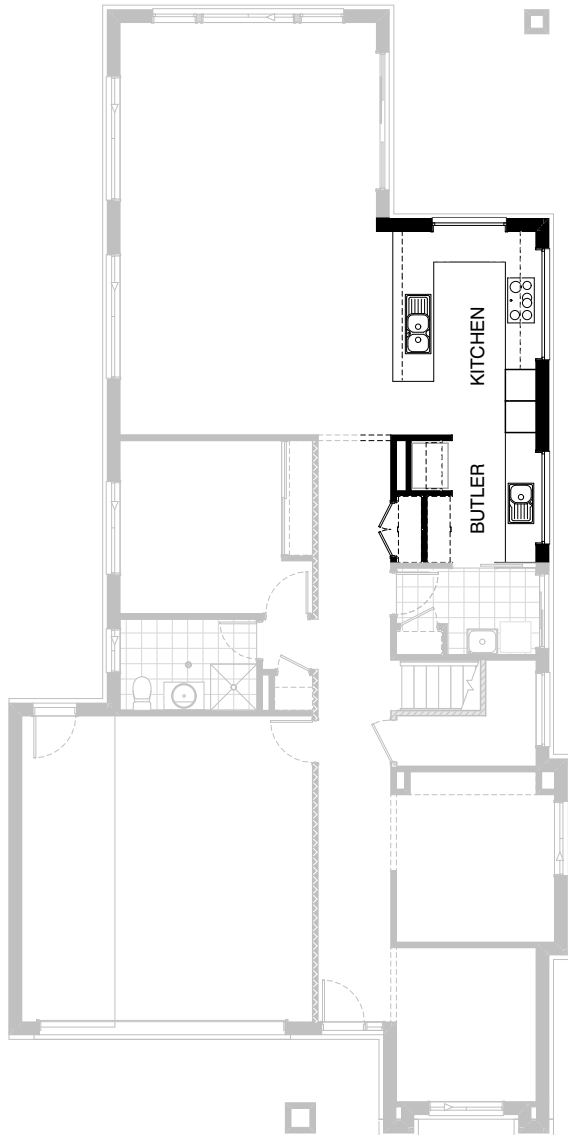
Option Kitchen02

Provide Butler's Pantry in lieu of Walk-in Pantry including
 1No. 800mm base cupboard,
 2No. 450mm base cupboards,
 single bowl sink,
 1No. AFW1215 fixed window, additional bench top and tiled splashback to suit and
 4No. 450mm shelves. 620mm hinged door to Linen in lieu of standard to accommodate relocated plumbing stack.



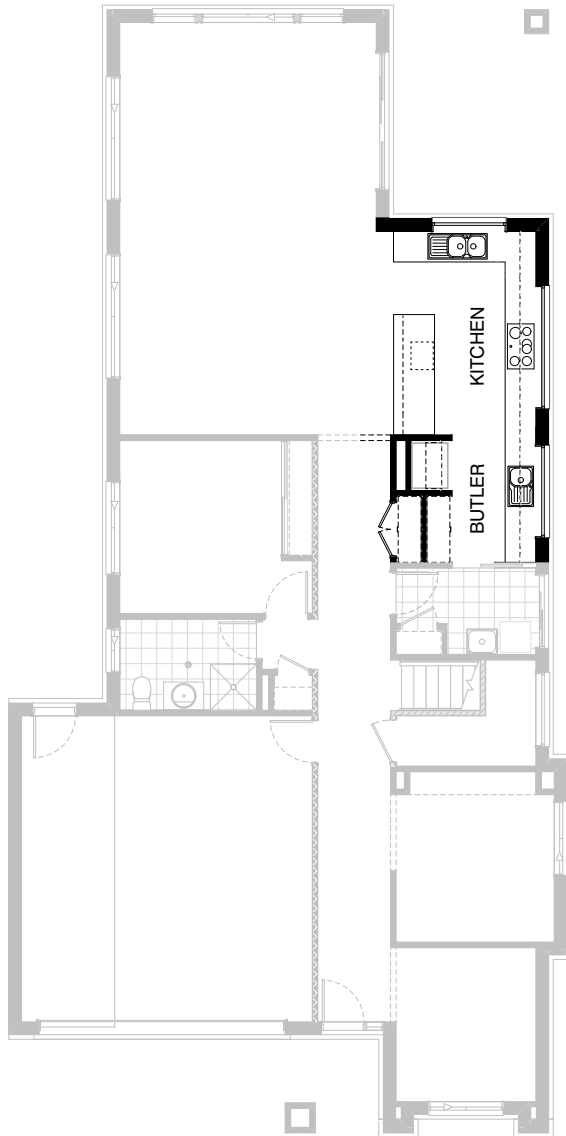
Option Kitchen03

Provide Galley-style Kitchen upgrade option with Butler's Pantry in lieu of Walk-in Pantry. Kitchen includes 900mm retractable rangehood, 900mm electric cooktop, 900mm under bench oven, 450mm drawer unit, microwave provision with pot drawer, 1No. 900mm base cupboard, 2No. 800mm base cupboards, 2No. 700mm base cupboards, 2No. 800mm overhead cupboards and 2No. 700mm overhead cupboards. Island bench remains unchanged but is now fixed to wall with additional wall tiles to suit. Butler's Pantry includes 2No. 800mm base cupboards, 1No. 700mm base cupboard, 2No. 800mm overhead cupboards, 1No. 700mm overhead cupboard, Ref space with 900mm open shelf over, 1No. AFW0518 fixed window, additional bench top and tiled splashback and 4No. 450mm shelves. Linen closet to Passage is extended by 310mm with 2No. 520 hinged doors in lieu of standard.



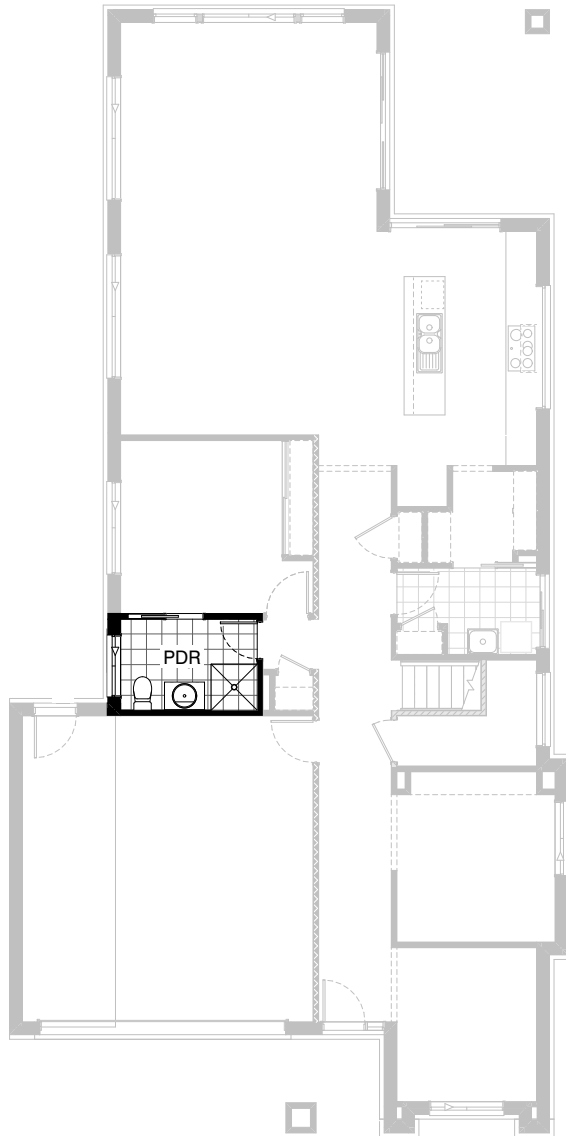
Option Kitchen04

Provide U-shaped Kitchen upgrade option including Butler's pantry in lieu of Walk-in Pantry. Kitchen includes
 900mm retractable rangehood, 900mm electric cooktop,
 2No. oven towers with 600mm ovens and microwave provisions,
 450mm drawer unit, dishwasher provision,
 2No. 900mm corner base cupboards,
 3No. 900mm base cupboards,
 1No. 800mm base cupboard,
 1No. 900mm overhead cupboard,
 1No. 800mm overhead cupboard,
 1No. AFW0521 fixed window in lieu of standard and additional AFW1215 fixed window.
 Butler's Pantry includes
 1No. 900mm base cupboard,
 2No. 800mm base cupboards,
 Ref space with 900mm open shelf above, single bowl sink,
 1No. AFW1218 fixed window, additional bench top and tiled splashback,
 4No. 450mm shelves.
 Linen closet to Passage is extended by 310mm with 2No. 520 hinged doors in lieu of standard.



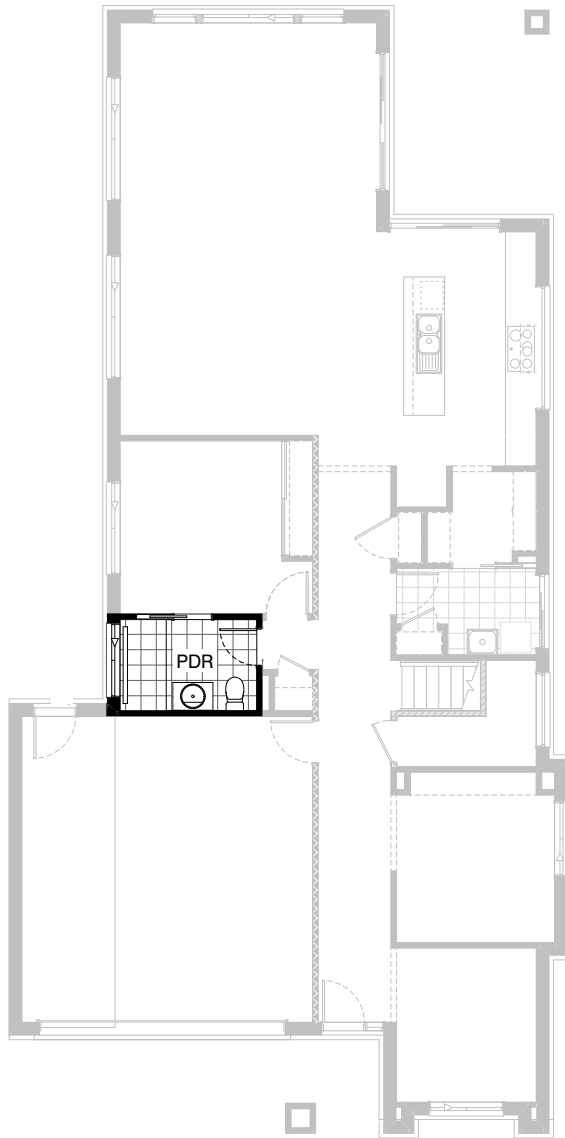
Option Kitchen05

Provide L-shaped Kitchen upgrade option including Butler's pantry in lieu of Walk-in Pantry.
 Kitchen/Butler's Pantry includes
 900mm retractable rangehood, 900mm electric cooktop, 900mm under bench oven, 450mm
 drawer unit, dishwasher provision, microwave provision,
 1No. 900mm corner base cupboard,
 3No. 900mm base cupboards,
 4No. 800mm base cupboards,
 1No. 450mm base cupboard,
 1No. 400mm base cupboard,
 1No. 300mm base cupboard,
 2No. 900mm overhead cupboards,
 4No. 800mm overhead cupboards,
 1No. 400mm overhead cupboard,
 1No. AFW0524 fixed window,
 additional AFW1218 fixed window to Kitchen and additional AFW0518 fixed window, additional
 single bowl sink,
 Ref space with 900mm open shelf above and
 4No. 450mm shelves to Butler's Pantry with additional bench top and tiled splashback to suit.
 Linen closet to Passage is extended by 310mm with 2No. 520 hinged doors in lieu of standard.



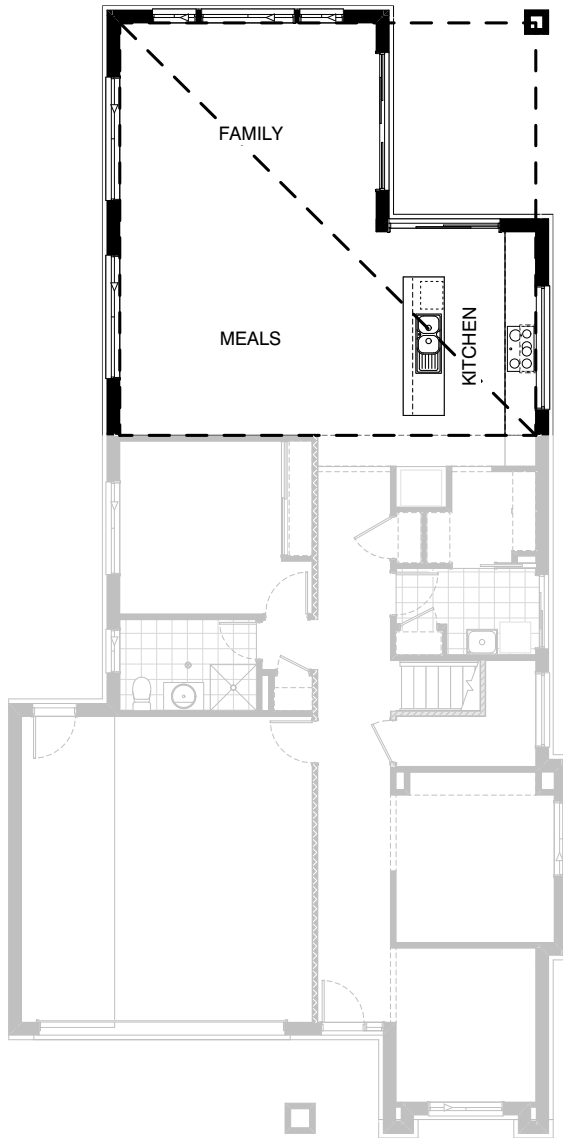
Option Internal01

Provide 720mm cavity sliding door between Guest Bed and Powder to create Ensuite/Powder room. Provide ASW1012 window to Powder in lieu of standard to allow for towel rail location.



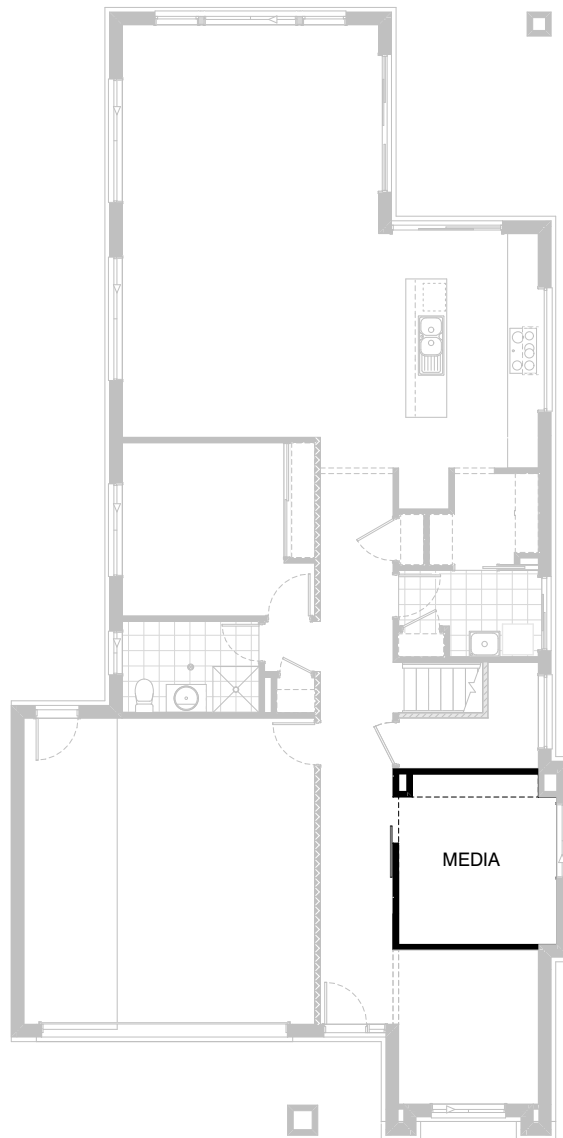
Option Internal02

Provide 720mm cavity sliding door between Guest Bed and Powder to create Ensuite/Powder room. Provide Ensuite/Powder upgrade including rearranged layout, 1800x900mm wall-to-wall tiled shower base, AFW0315 window above shower and move 720mm hinged door across as shown to allow towel rail location.



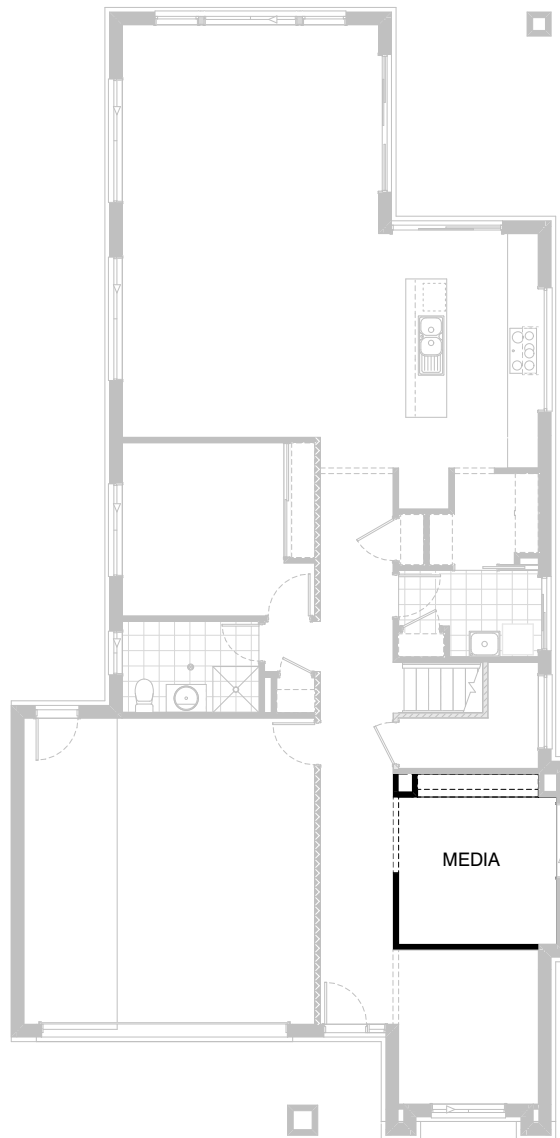
Option Internal03

Provide raised 3.0m high ceiling to Kitchen, Meals, Family and Alfresco with flat roof over with 3° pitch. Provide plaster bulkhead over rangehood and where the ceiling height changes in Kitchen.



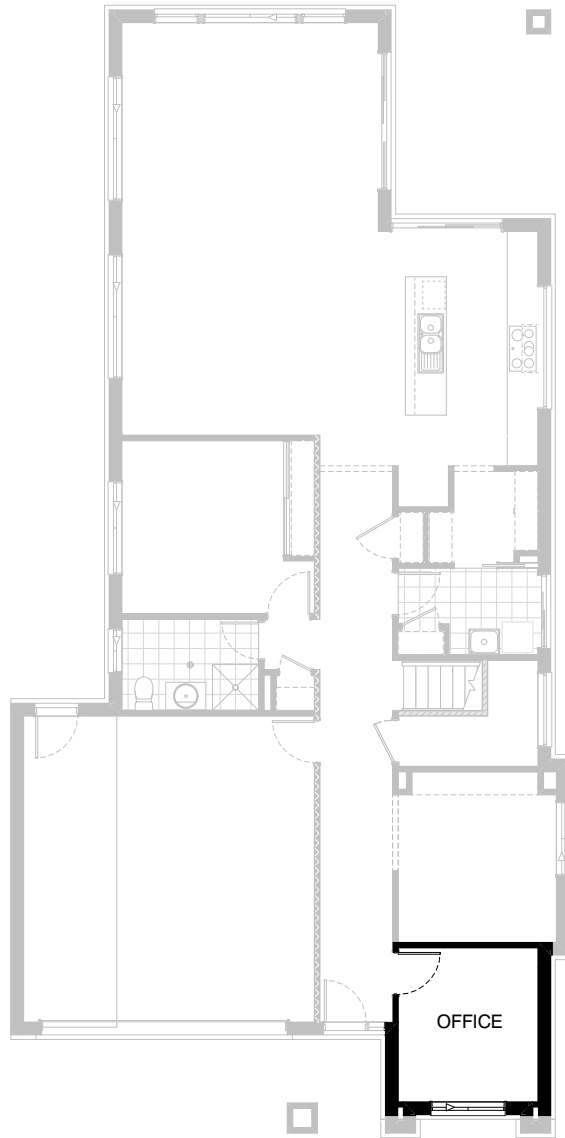
Option Internal04

Provide Barn door option to Media room in lieu of standard bulkhead opening.



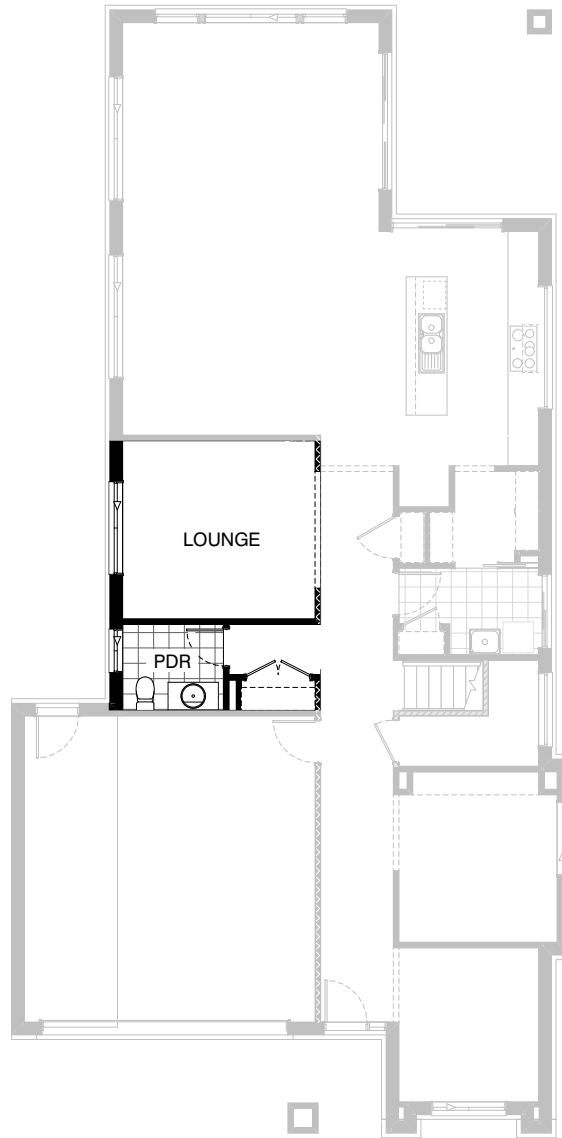
Option Internal05

Provide built-in joinery option to Media room including 450mm bench top with
2No. 800mm tv cabinet cupboards,
1No. 700mm tv cabinet cupboard and
2No. 300mm deep open shelves above.



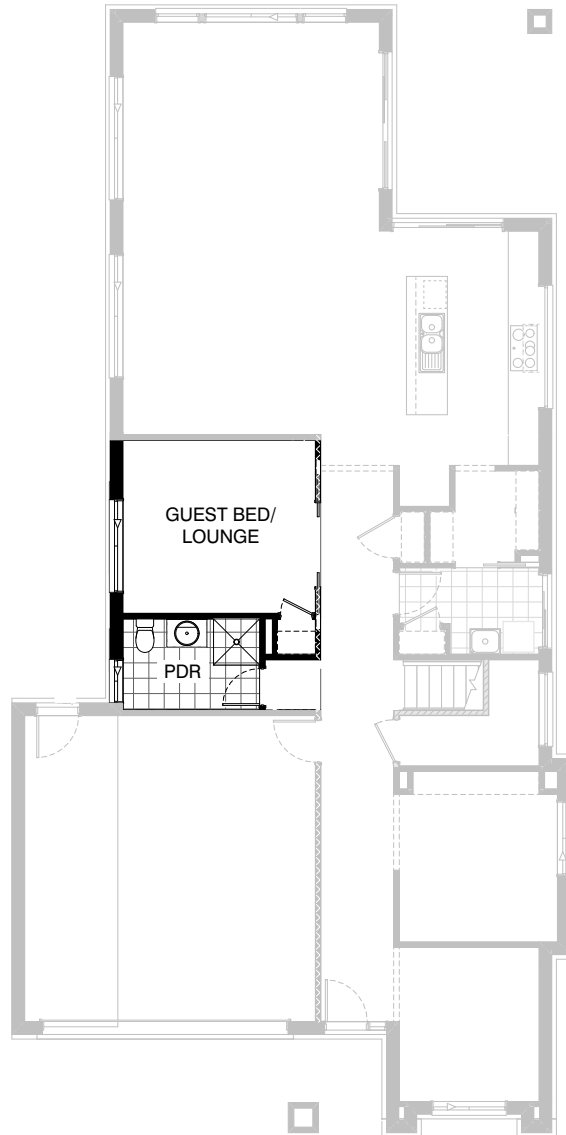
Option Internal06

Provide 820mm hinged door to Office in lieu of standard bulkhead opening.



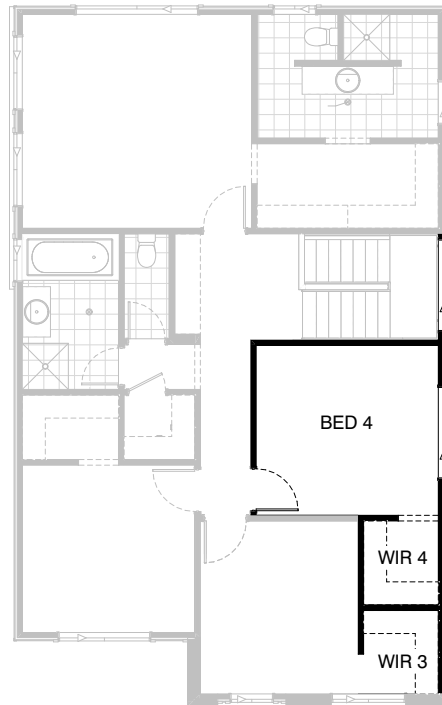
Option Internal07

Provide Lounge room option in lieu of Guest Bedroom. Remove 820mm hinged door and built-in Robe and provide bulkhead opening as shown. Remove tiled shower from Powder and increase vanity to 982mm in lieu of standard. Option also add 100mm of length to Lounge room and adds 700mm to Coats closet with 2No. 620mm hinged doors in lieu of standard. Provide ASW1021 window to Lounge in lieu of standard.



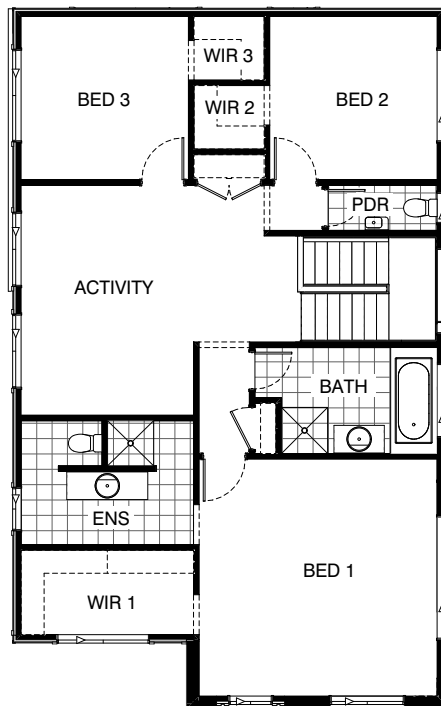
Option Internal08

Provide Guest Bedroom/Lounge room option with 2No. bi-parting 820mm cavity sliding doors. Remove built-in Robe with sliding doors and provide smaller Robe with hinged door as shown. Flip the orientation of Powder room and remove Coats closet from Passage.



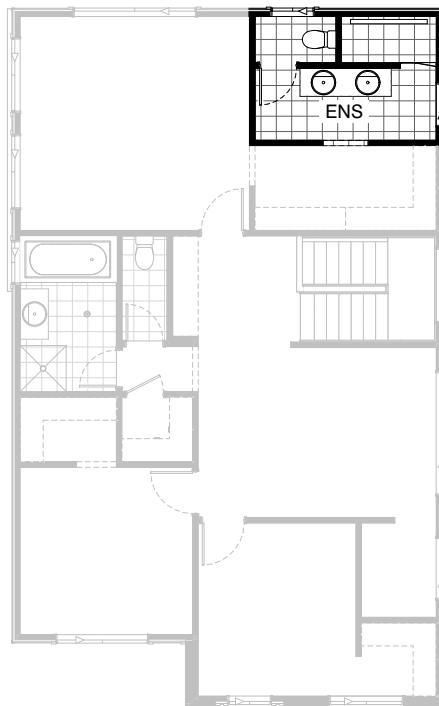
Option Internal09

Provide additional bedroom option to first floor in lieu of Living and Study.
Provide 820mm hinged door to bedroom and 4No. 450mm shelves to new Walk-in Robe. Remove ASW1012 window to WIR and provide ASW1218 window to bedroom in lieu of standard.



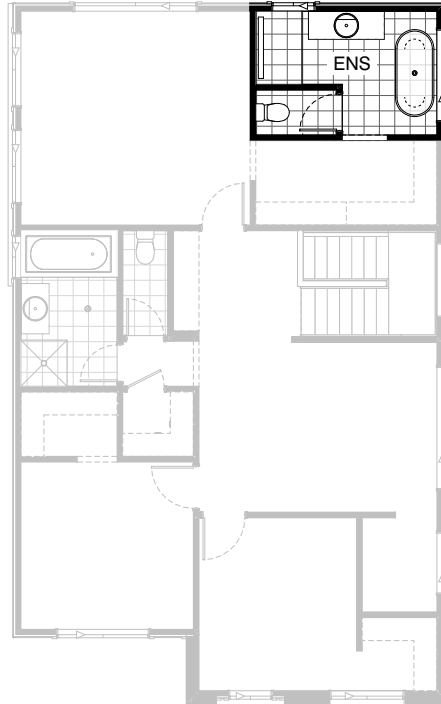
Option Internal10

Provide Bed 1 to front of the home as shown. Floor plan and windows rearranged to suit.



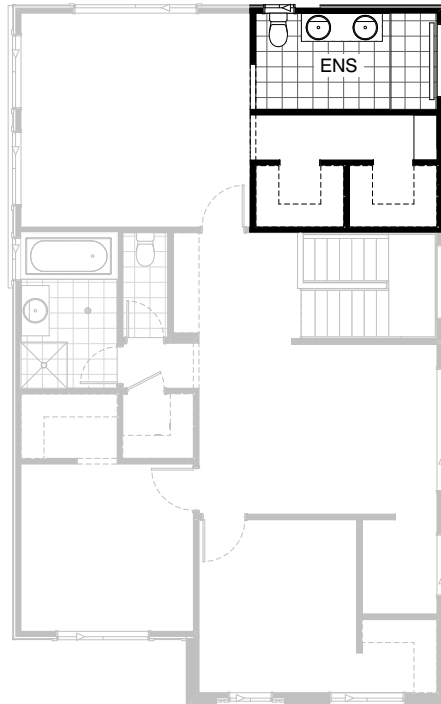
Option Ensuite01

Provide Ensuite upgrade option including 1870x900mm wall-to-wall tiled shower base with grate drain, 1582mm vanity with double basins and create enclosed WC with 720mm hinged door.



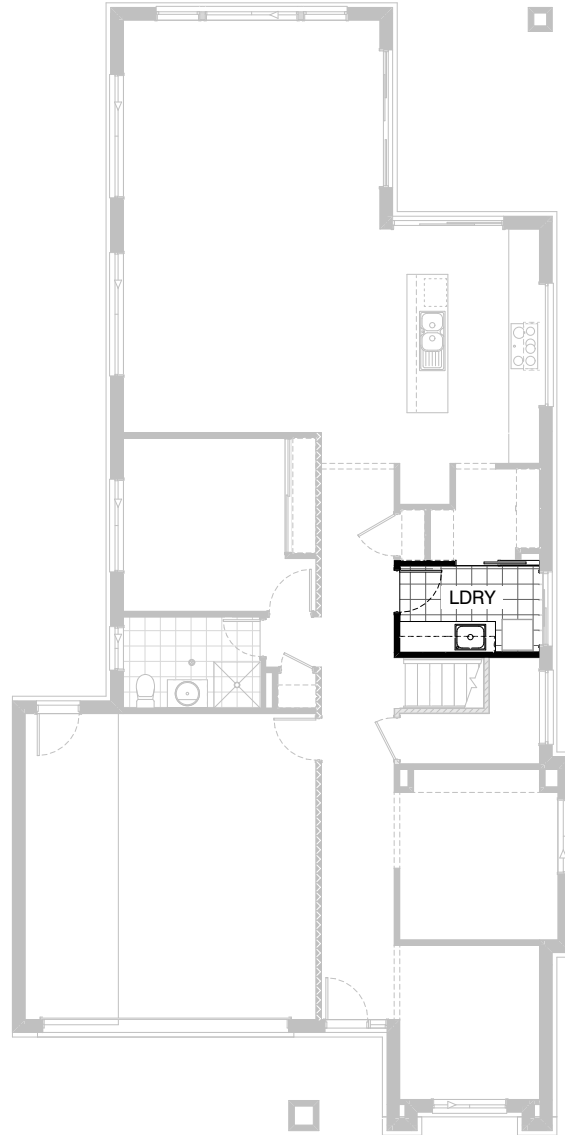
Option Ensuite02

Provide Ensuite upgrade option including freestanding bath, 1482mm vanity with single basin, 1450x900mm wall-to-wall tiled shower base with grate drain, enclosed WC with 720mm hinged door and ASW1018 sliding window in lieu of standard.



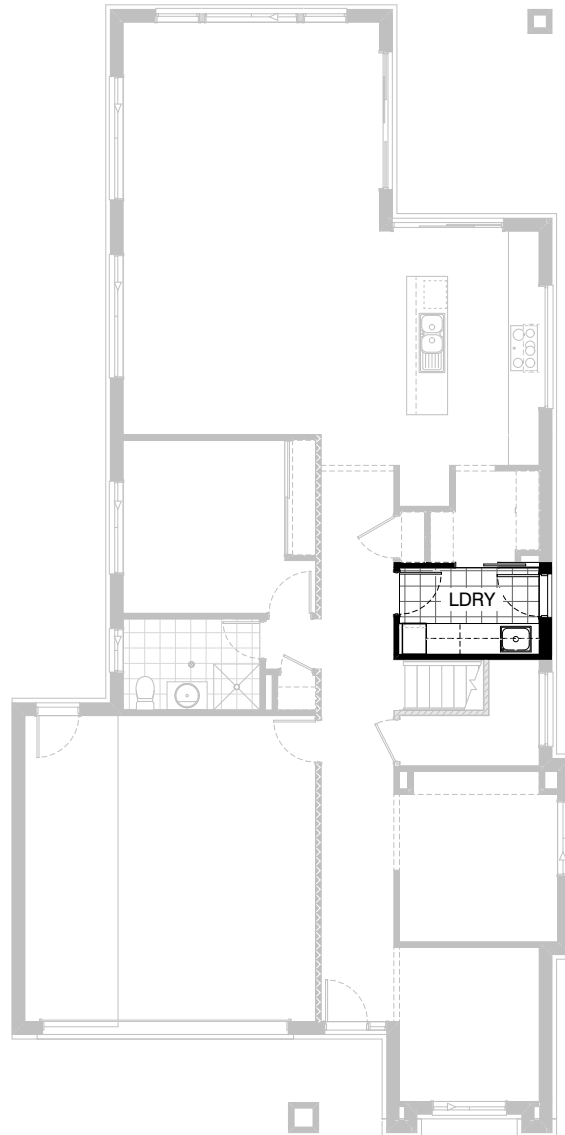
Option Ensuite03

Provide Ensuite and Walk-in Robe upgrade option including 1900x900mm wall-to-wall tiled shower base with grate drain with AFW0315 fixed window over, 1582mm vanity with double basins, relocated WC with ASW0306 window over, add 540mm to width of WIR and rearrange layout as shown with 900mm wide built-in dresser.



Option Laundry01

Provide Laundry upgrade including laminate base and overhead cupboards and stainless steel inset trough including
2No. 900mm base cupboards,
2No. 900mm overhead cupboards and
additional bench top and tiled splashback to suit.

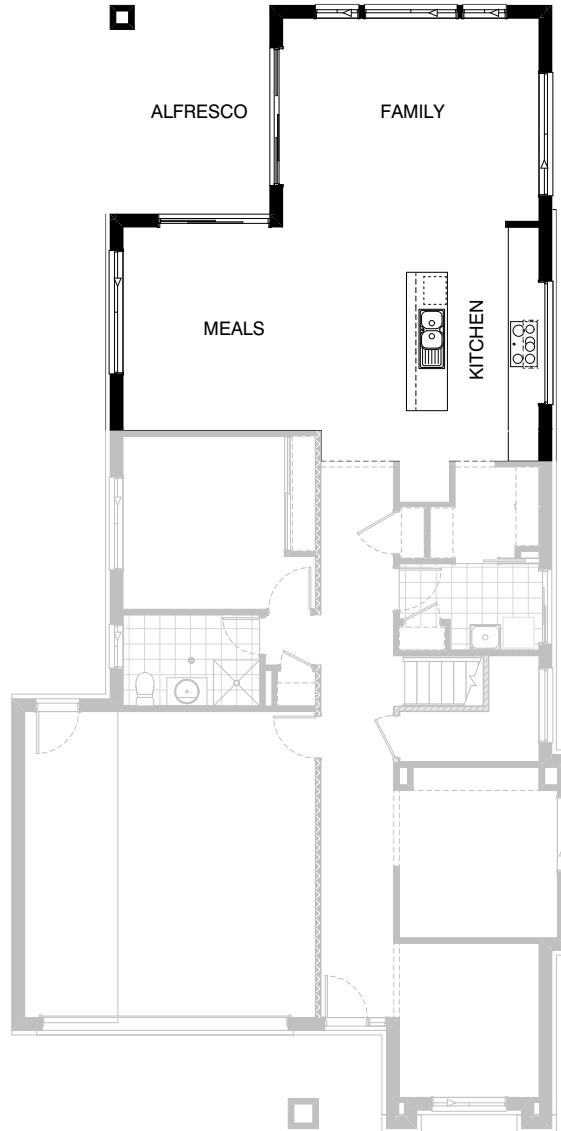


Option Laundry02

Provide Laundry upgrade including laminate base and overhead cupboards and stainless steel inset trough including

- 1No. 800mm base cupboard,
- 1No. 450mm full height laminate Linen cupboard,
- 1No. 900mm overhead cupboard,
- 1No. 800mm overhead cupboard,
- 1No. 450mm overhead cupboard and additional bench top and tiled splashback to suit. Provide AED2108 access door in lieu of standard ASD2115 sliding door.

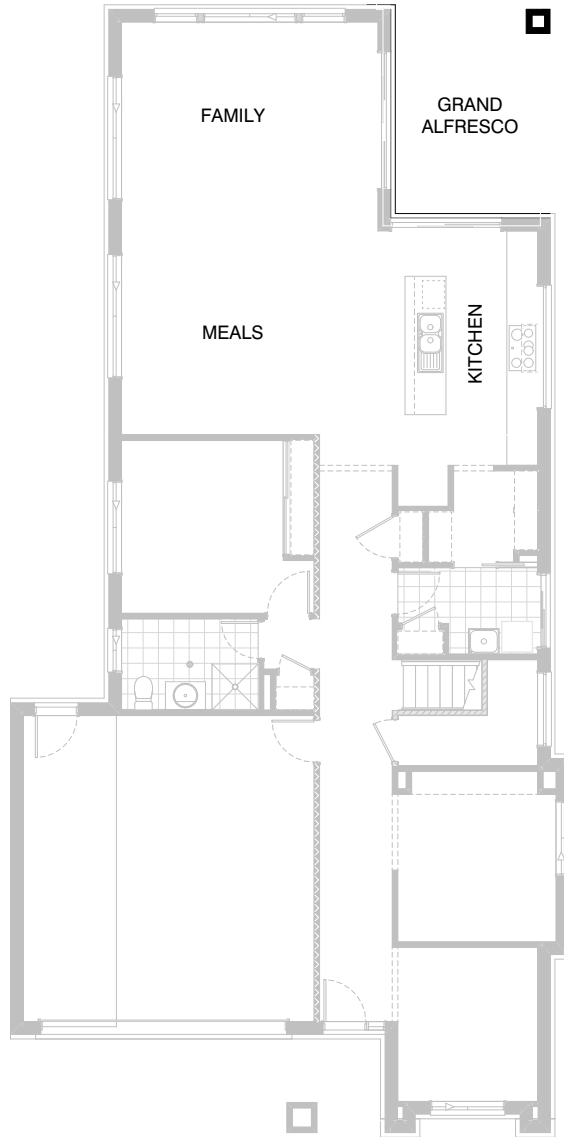
Option also provides open space under bench for washer and dryer side-by-side.



Option External01

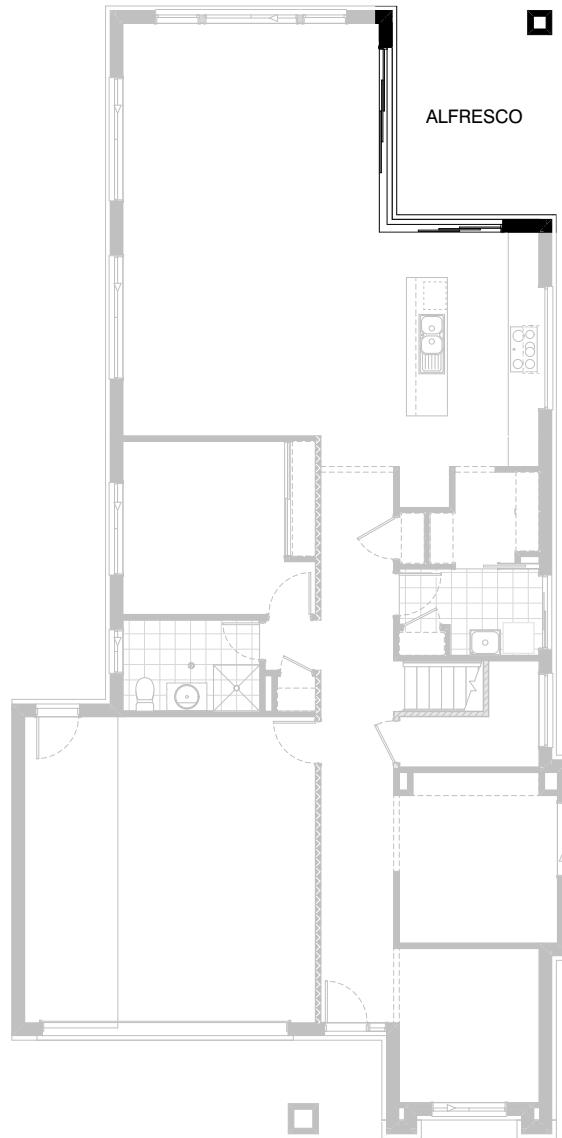
Provide mirrored Family and Alfresco with stud and plaster nib wall to end of bench top in Kitchen. Windows to Meals and Family move slightly as shown to accommodate.

Note: this option NOT available in conjunction with option Kitchen04 or Kitchen05



Option External02

Provide Grand Alfresco option including tiled roof over and additional 2No. 470x470mm brick piers. Adds 3000mm of length to the building footprint.



Option External03

Provide corner sliding door option. Remove ASD 2127 and ASD 2121 sliding doors and replace with ACSD 2136-24 corner sliding door.

Note: this option NOT available in conjunction with option Kitchen04 or Kitchen05