

**Facades available:**

Delta, Kingston, Nouveau  
Traditional, York

**Overall home width 10.67m**

**Overall home length 23.91m**

Residence	148.6m <sup>2</sup>	16.0sq
Garage	44.6m <sup>2</sup>	4.8sq
Porch	1.8m <sup>2</sup>	0.2sq
Alfresco	11.4m <sup>2</sup>	1.2sq
<b>Total</b>	<b>206.5m<sup>2</sup></b>	<b>22.2sq</b>

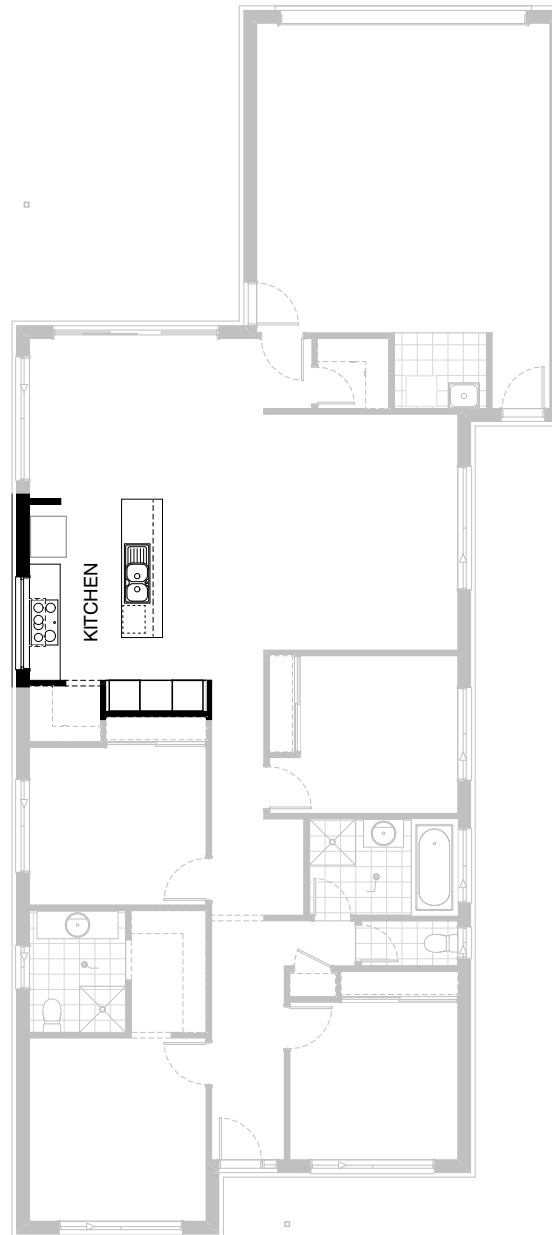
**FLOORPLAN OPTIONS**

We personalise our floorplans. Talk to us about our huge range of ready-to-go design options.

Listed details based on Traditional facade floorplan (illustrated)

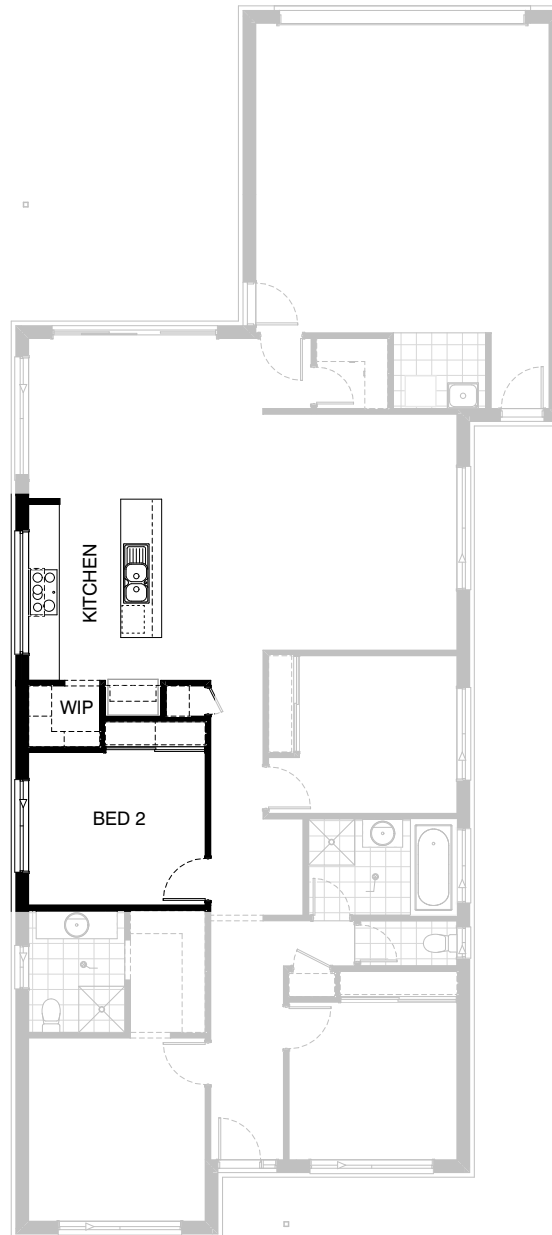
\*Copyright conditions. All photos and illustrations are representative only. Floor plans and specifications may be varied by Burbank without notice, the dimensions are diagrammatic only and a Building Contract with final drawings will display correct dimensions and detail. All designs are the property of Burbank and must not be used, reproduced, copied or varied, wholly or in part without written permission from an authorised Burbank representative. Copyright Burbank Australia (QLD) Pty Ltd. ABN 77 103 014 615. QBCC 1046544.

**Call 13 BURBANK**  
**Visit [burbank.com.au](http://burbank.com.au)**



## Option Kitchen01

Provide Kitchen option including  
 900mm retractable rangehood,  
 1No. 600mm Wall Oven Tower with  
 microwave provision open shelf,  
 1No.450mm drawer unit,  
 dishwasher provision,  
 1No. 900mm base cupboards,  
 1No. 800mm base cupboards,  
 2No. 700mm base cupboards,  
 2No. 600mm melamine Pantry units,  
 1No. 514x1810mm aluminium frame  
 fixed window with splashback return  
 to reveal.



## Option Kitchen02

Provide Kitchen upgrade including  
 900mm retractable rangehood,  
 900mm electric cooktop,  
 900mm under bench oven,  
 450mm drawer unit, dishwasher provision,  
 microwave provision with pot drawer,  
 1No. 900mm base cupboards,  
 2No. 800mm base cupboards,  
 2No. 400mm base cupboards, relocated refrigerator  
 space with 900mm open shelf above,  
 additional Broom cupboard with 520mm hinged door  
 and 1No. 450mm shelf, 1No. 514mm x 2410mm  
 aluminium frame fixed window with additional  
 benchtop and tiled splashback to suit.