

**FLOORPLAN OPTIONS**

We personalise our floorplans. Talk to us about our huge range of ready-to-go design options.

**Facades available:**

Delta, Coastal, Kingston, Nouveau  
Salisbury, Traditional, York

**Overall home width 8.99m**

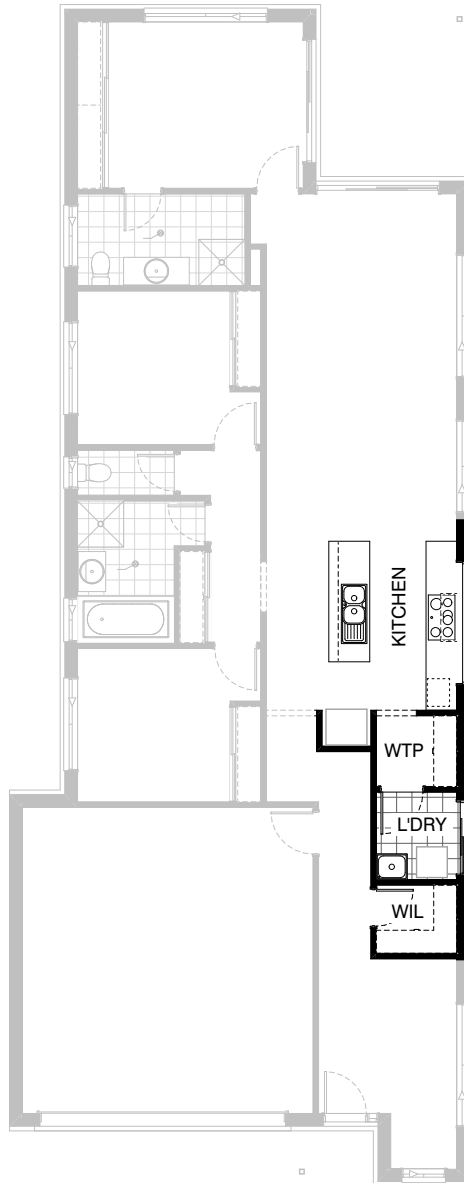
**Overall home length 22.91m**

Residence	134.2m <sup>2</sup>	14.5sq
Garage	37.3m <sup>2</sup>	4.0sq
Porch	1.8m <sup>2</sup>	0.2sq
Alfresco	10.1m <sup>2</sup>	1.1sq
<b>Total</b>	<b>183.4m<sup>2</sup></b>	<b>19.7sq</b>

Listed details based on Traditional facade floorplan (illustrated)

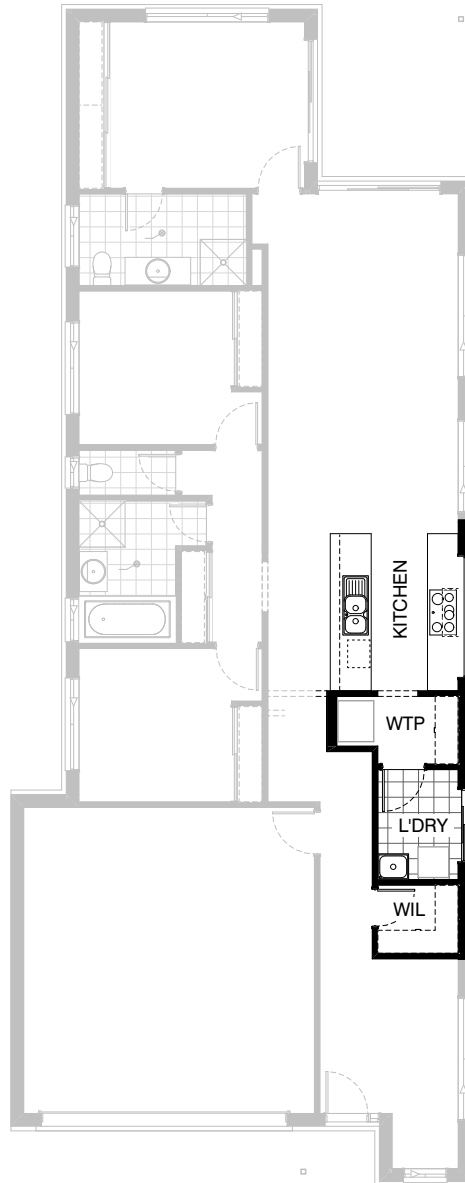
\*Copyright conditions. All photos and illustrations are representative only. Floor plans and specifications may be varied by Burbank without notice, the dimensions are diagrammatic only and a Building Contract with final drawings will display correct dimensions and detail. All designs are the property of Burbank and must not be used, reproduced, copied or varied, wholly or in part without written permission from an authorised Burbank representative. Copyright Burbank Australia (QLD) Pty Ltd. ABN 77 103 014 615. QBCC 1046544.

**Call 13 BURBANK**  
**Visit [burbank.com.au](http://burbank.com.au)**



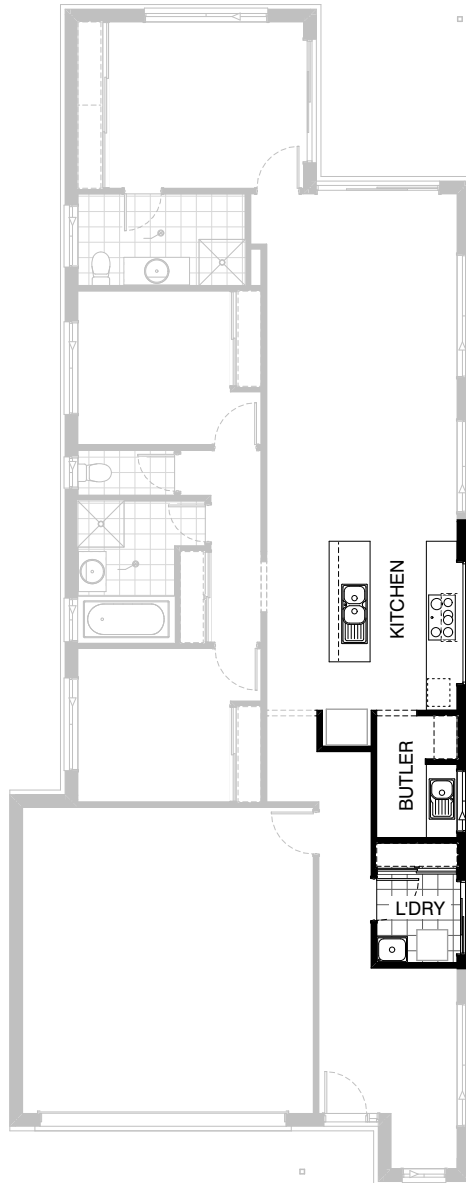
### Option Kitchen01

Provide Walk-through Pantry option, including 900mm retractable rangehood, 900mm electric cooktop, 900mm under bench oven, 450mm drawer unit, dishwasher provision, microwave provision with pot drawer, 1No. 900mm base cupboard, 2No. 700mm base cupboards, 2No. 300mm base cupboards, 1No. 514x2410 fixed aluminium window, additional benchtop and tiled splashback to suit. Option takes 440mm from Laundry and 1050mm from Study.



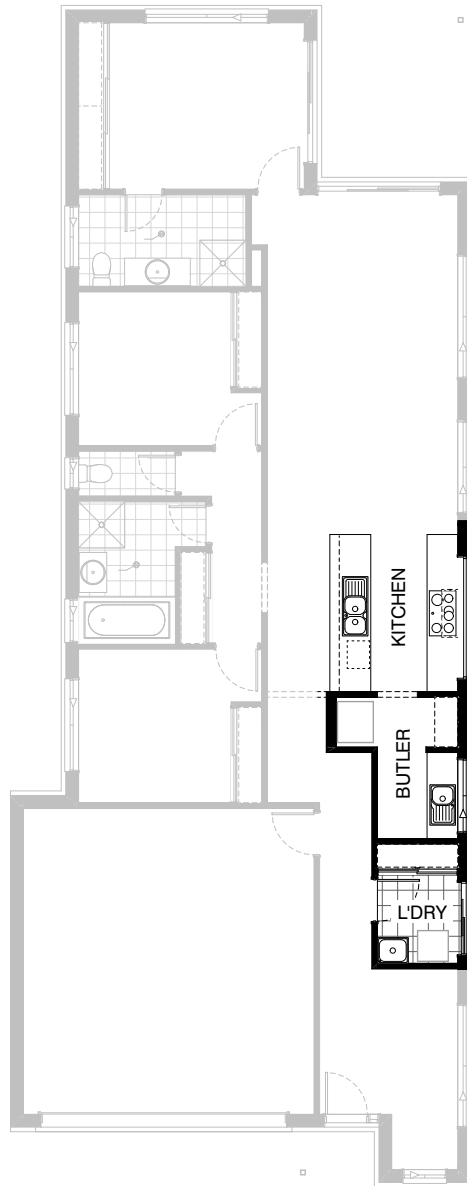
### Option Kitchen02

Provide Galley-style Kitchen upgrade by rearranging refrigerator space, including 900mm retractable rangehood, 900mm electric cooktop, 900mm under bench oven, 450mm drawer unit, dishwasher provision, microwave provision with pot drawer, 1No. 900mm base cupboard, 2No. 700mm base cupboards, 3No. 350mm base cupboards, 1No. 514x2410 fixed aluminium window, additional benchtop and tiled splashback to suit. Option takes 1050mm from Study and creates Walk-through Pantry in lieu of standard.



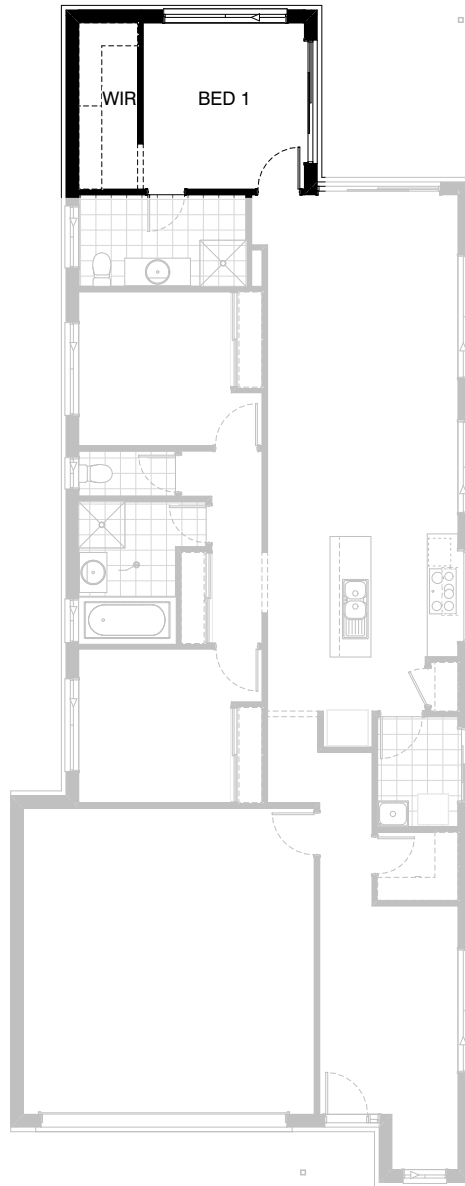
### Option Kitchen03

Provide Butler's Pantry Kitchen upgrade including  
 900mm retractable rangehood,  
 900mm electric cooktop,  
 900mm under bench oven,  
 450mm drawer unit, dishwasher provision, microwave  
 provision with pot drawer,  
 2No. 900mm base cupboards,  
 2No. 700mm base cupboards,  
 1No. 450mm base cupboard,  
 2No. 300mm base cupboard,  
 single bowl sink, 1No. 514x2400mm fixed aluminium window,  
 1No. 1200x1210mm sliding aluminium window,  
 moves 820mm hinged door from Laundry to Entry Passage,  
 additional benchtop and tiled splashback to suit.  
 Option removes Walk-in Linen and provides standard Linen  
 cupboard within Laundry with sliding Robe doors.  
 Option takes 1230mm from Study.



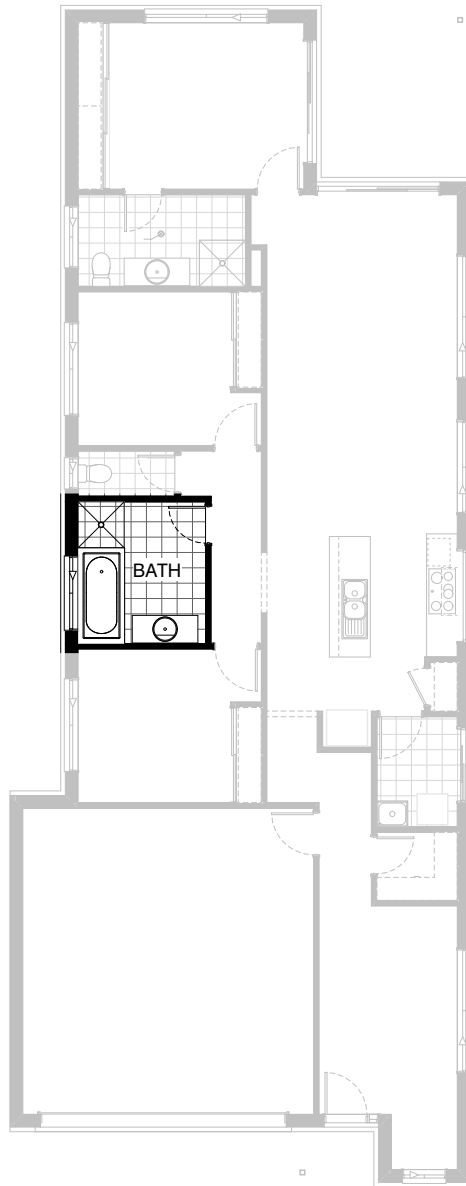
### Option Kitchen04

Provide Galley-style Butler's Pantry Kitchen upgrade by rearranging refrigerator space, including 900mm retractable rangehood, 900mm electric cooktop, 900mm under bench oven, 450mm drawer unit, dishwasher provision, microwave provision with pot drawer,  
 1No. 900mm base cupboard,  
 1No. 800mm base cupboard,  
 2No. 700mm base cupboards,  
 2No. 400mm base cupboards,  
 3No. 350mm base cupboards,  
 single bowl sink, 1No. 514x2410 fixed aluminium window,  
 1No. 1200x1450mm sliding aluminium window, moves 820mm hinged door from Laundry to Entry Passage, additional benchtop and tiled splashback to suit. Option removes Walk-in Linen and provides standard Linen cupboard within Laundry with sliding Robe doors.  
 Option takes 1230mm from Study.



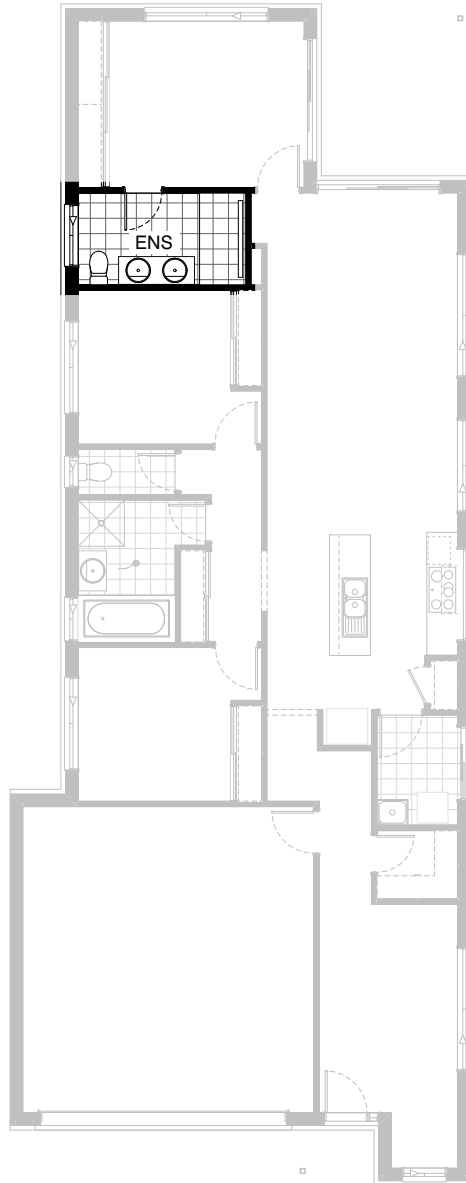
### Option Internal01

Provide floor plan option including Walk-in Robe to Bed 1 in lieu of standard Robe with Gyprock sliding doors.  
Option takes 660mm of width from Bed 1.



### Option Internal02

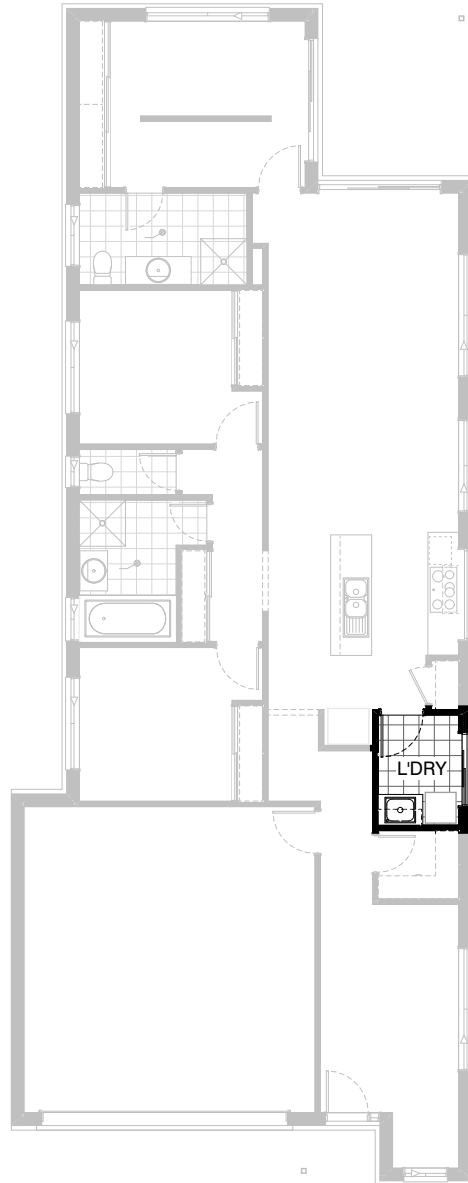
Provide Bathroom upgrade by rearranging the layout, deleting standard Linen cupboard to Passage, provide 1282mm vanity in lieu of standard 782mm vanity, provide 1200x1450mm sliding aluminium window in lieu of standard.



### Option Ensuite01

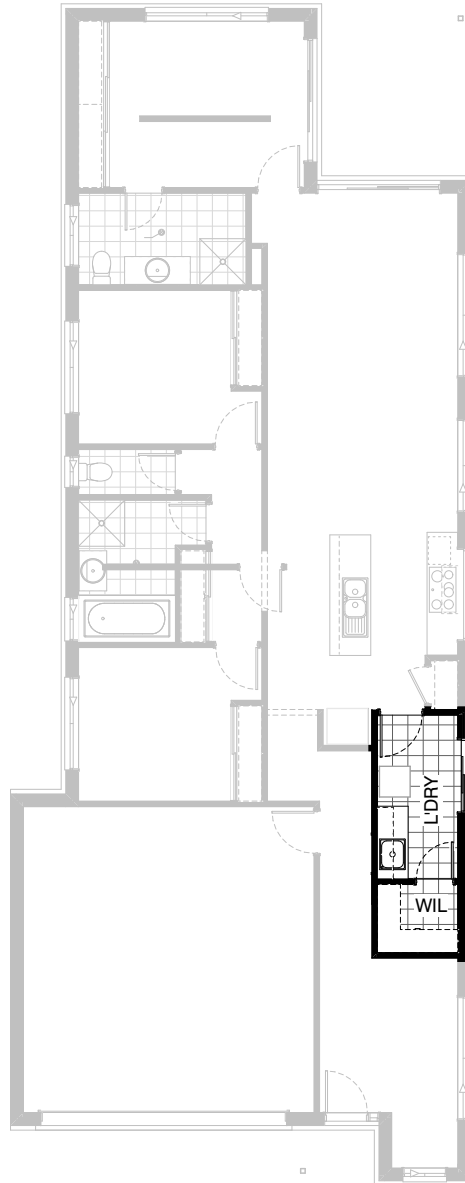
Provide Ensuite upgrade including 900x1810mm tiled shower base, 1482mm vanity with double basins in lieu of standard.





### Option Laundry01

Provide Laundry upgrade option with laminate cupboards and stainless steel inset trough including  
1No. 800mm base cupboard,  
1No. 800mm overhead cupboard,  
additional benchtop and tiled splashback to suit.



### Option Laundry02

Provide Laundry upgrade option with laminate cupboards and stainless steel inset trough including  
1No. 900mm base cupboard,  
1No. 450mm base cupboard,  
1No. 900mm overhead cupboard,  
1No. 450mm overhead cupboard,  
additional benchtop and tiled splashback to suit.  
Move 820mm hinged door from Passage to within Laundry.  
Option takes 1050mm from Study.