

Facades available:	
Coastal, Delta, Kingston, Nouveau	
Salisbury, Traditional, York	
Overall home width	14.27m
Overall home length	24.11m

Residence	249.6m ²	26.9sq
Garage	40.9m ²	4.4sq
Porch	4.1m ²	0.5sq
Alfresco	12.7m ²	1.4sq
Total	307.4m²	33.1sq

FLOORPLAN OPTIONS

We personalise our floorplans. Talk to us about our huge range of ready-to-go design options.

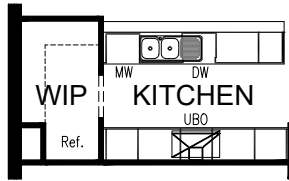
Listed details based on Traditional facade floorplan (illustrated)

*Copyright conditions. All photos and illustrations are representative only. Floor plans and specifications may be varied by Burbank without notice, the dimensions are diagrammatic only and a Building Contract with final drawings will display correct dimensions and detail. All designs are the property of Burbank and must not be used, reproduced, copied or varied, wholly or in part without written permission from an authorised Burbank representative. Copyright Burbank Australia (QLD) Pty Ltd. ABN 77 103 014 615. QBCC 1046544.

Call 13 BURBANK
Visit burbank.com.au

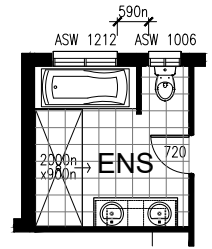
OPTION K1

Provide Kitchen upgrade with Walk-in-Pantry containing refrigerator space and shelving. Move under bench oven, cook top and rangehood to suit.



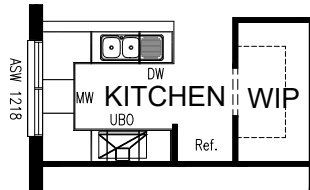
OPTION ENS3

Provide 1675 bath and 2000mm wide tiled shower base to Ensuite. Move vanity to suit. Remove stud and plaster walls from WC to allow for relocation of 720 hinged door. Move window 240mm to suit.



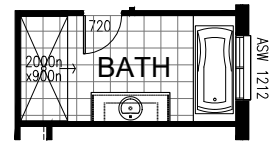
OPTION K2

Provide 'U shaped' Kitchen upgrade with Walk-in-Pantry and shelving. Add ASW 1218 window. Move under bench oven, cook top and rangehood to suit.



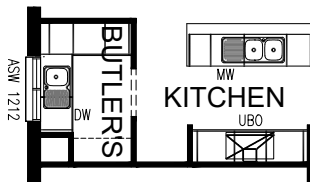
OPTION BA1

Provide Bathroom upgrade including full width (2000mm) tiled shower base in lieu of standard 900mm wide tiled shower base.



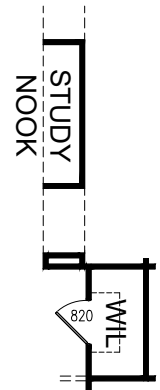
OPTION K3

Provide Kitchen upgrade with Butler's Pantry containing extra sink, laminate bench top with base cupboards and shelving. Move dishwasher to Butler's Pantry, reconfigure island bench, under bench oven, cook top and rangehood to suit. Add ASW 1212 window. Works with Option IP3 Pantry and Broom closet.



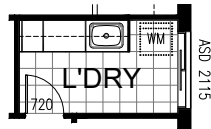
OPTION IP1

Provide Study relocation closer to kitchen. Swap existing Linen for open Study Nook. Provide upgraded Walk-in Linen with 820 hinged door where Study was.



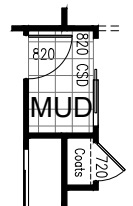
OPTION LD1

Provide Laundry option with additional laminate counter with bench top in lieu of standard stainless steel unit. Provide extra base cupboards, overhead cupboards, additional tiled splashback and bench top to suit.



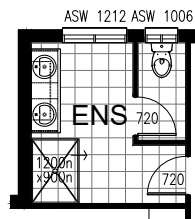
OPTION IP2

Provide stud and plaster Coat cupboard to Entry passage including shelving and 720 hinged door.



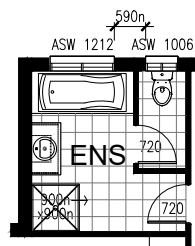
OPTION ENS1

Provide 1200x900 tiled shower base to Ensuite in lieu of standard 900x900. Move vanity to suit.



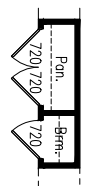
OPTION ENS2

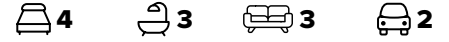
Provide 1675 bath to Ensuite. Change vanity to single sink 982mm unit to suit. Move window 240mm to suit.



OPTION IP3

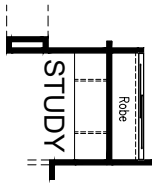
Convert existing Linen to Pantry and Broom closet. Add stud and plaster wall and 3no. 720 hinged doors to suit.





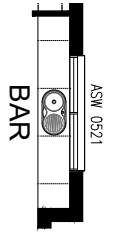
OPTION IP4

Provide built-in 32mm thick laminated bench top and 2 No. 32mm thick laminated support panels 500mm from each end to Study.



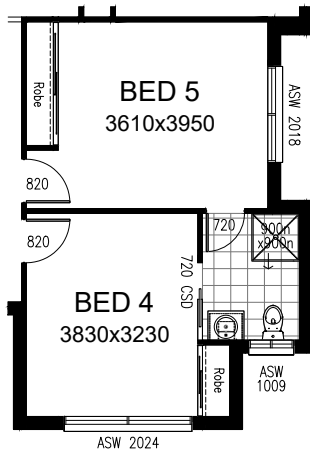
OPTION IP8

Add built-in laminate bench top, single sink and base cupboards to Games room to provide Bar area.



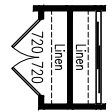
OPTION IP5

Convert existing Living room to Bed 5, adding Robe and 820 hinged door. Reconfigure existing Ensuite 2 to suit. Provide 720 cavity sliding door and move existing 720 hinged door to suit.



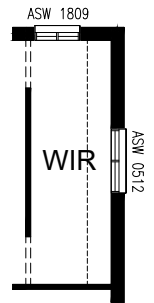
OPTION IP9

Add stud and plaster wall to existing Walk-in Linen to provide 2no. separate Linen closets. Add vinyl sliding doors and extra 720 hinged door.



OPTION IP10

Remove existing stud and plaster wall between WIR 1 and WIR 2 to provide 1no. oversized WIR. Adjust shelving and move ASW 0512 window to suit.



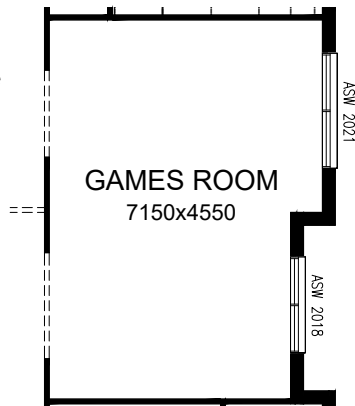
OPTION IP6

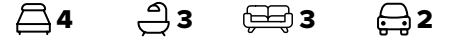
Remove vinyl sliding doors to Storage in Garage to provide open Workshop area.



OPTION IP7

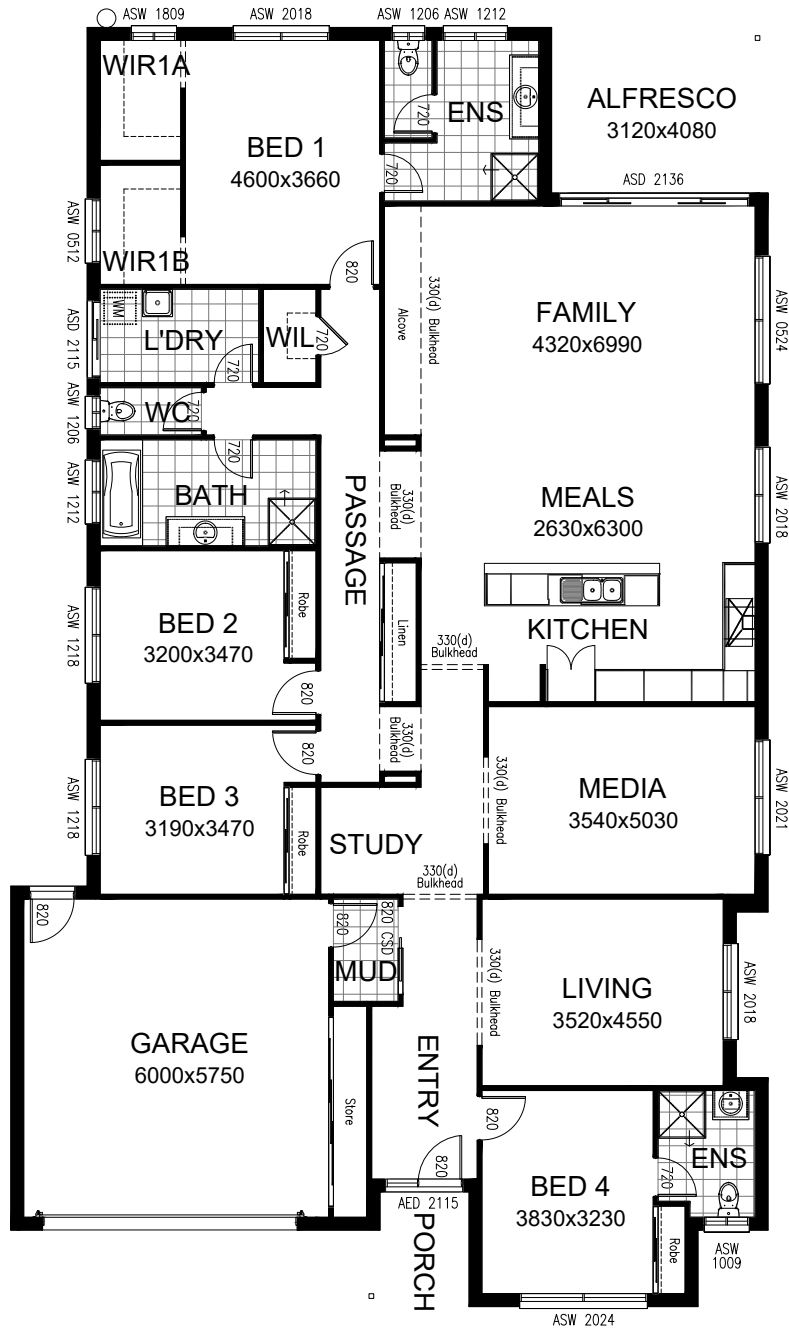
Remove stud and plaster wall between Living room and Media room to provide oversized Games room. (Only available with mirrored rear of house)

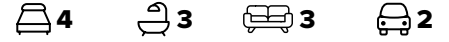




OPTION IP11

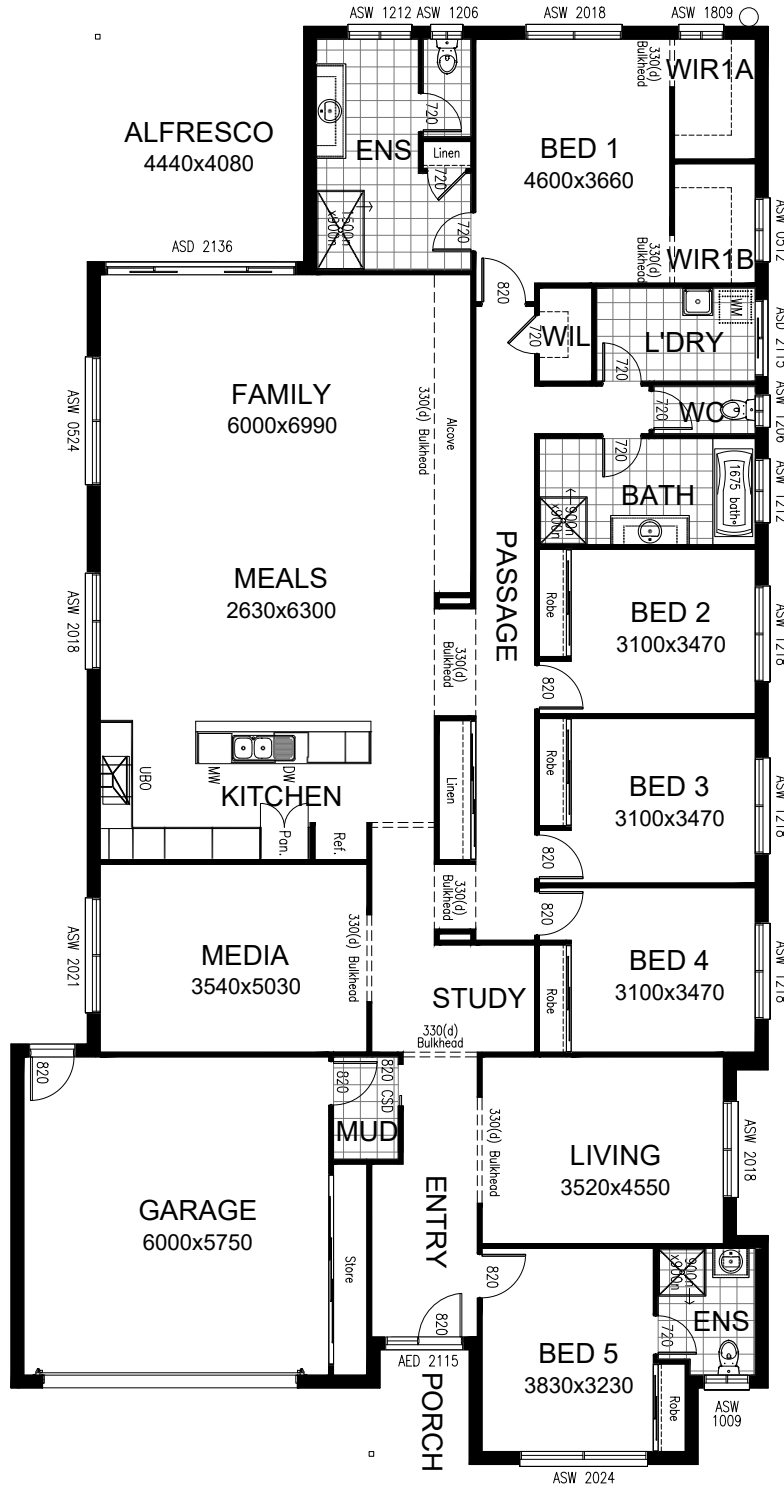
Mirrored rear section of the house.





OPTION IP12

5th Bedroom added to floor plan. Larger Living/Meals, Alfresco and Ensuite.
Reconfigure Ensuite to suit with small Linen.



*Copyright conditions. All photos and illustrations are representative only. Floor plans and specifications may be varied by Burbank without notice, the dimensions are diagrammatic only and a Building Contract with final drawings will display correct dimensions and detail. All designs are the property of Burbank and must not be used, reproduced, copied or varied, wholly or in part without written permission from an authorised Burbank representative. Copyright Burbank Australia (QLD) Pty Ltd. ABN 77 103 014 615. QBCC 1046544.