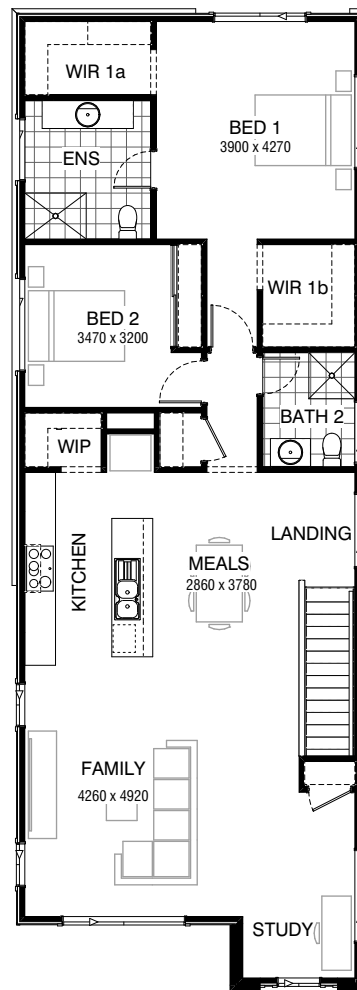


GROUND FLOOR



FIRST FLOOR

**FLOORPLAN OPTIONS**

We personalise our floorplans. Talk to us about our huge range of ready-to-go design options.

**Facades available:**

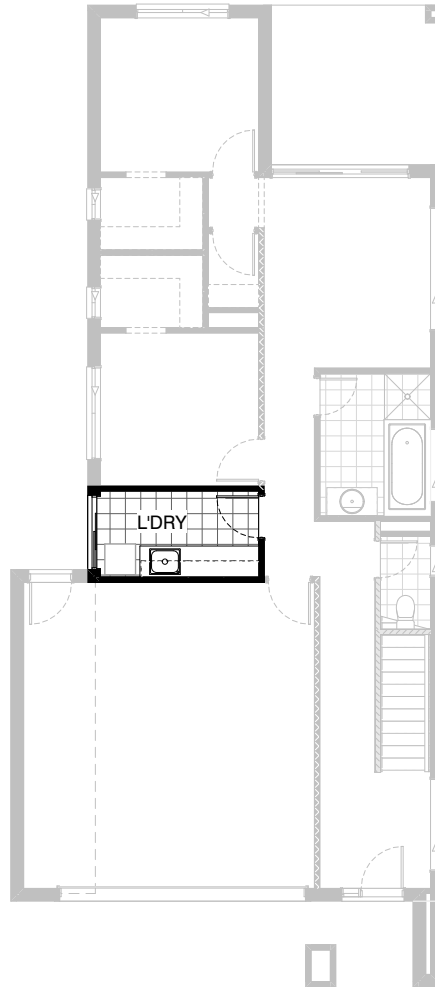
|                                |               |
|--------------------------------|---------------|
| Bradbury, Bradshaw, Kingsley,  |               |
| Kingston, Nouveau, Traditional |               |
| Urban                          |               |
| <b>Overall home width</b>      | <b>8.45m</b>  |
| <b>Overall home length</b>     | <b>19.19m</b> |

|              |                           |               |
|--------------|---------------------------|---------------|
| Residence    | 205.3m <sup>2</sup>       | 9.1sq         |
| Garage       | 37.4m <sup>2</sup>        | 4.0sq         |
| Porch        | 3.5m <sup>2</sup>         | 0.4sq         |
| Alfresco     | 10.5m <sup>2</sup>        | 1.1sq         |
| <b>Total</b> | <b>256.7m<sup>2</sup></b> | <b>27.6sq</b> |

Listed details based on Traditional facade floorplan (illustrated)

\*Copyright conditions. All photos and illustrations are representative only. Floor plans and specifications may be varied by Burbank without notice, the dimensions are diagrammatic only and a Building Contract with final drawings will display correct dimensions and detail. All designs are the property of Burbank and must not be used, reproduced, copied or varied, wholly or in part without written permission from an authorised Burbank representative. Copyright Burbank Australia (QLD) Pty Ltd. ABN 77 103 014 615. QBCC 1046544.

**Call 13 BURBANK**  
**Visit [burbank.com.au](http://burbank.com.au)**



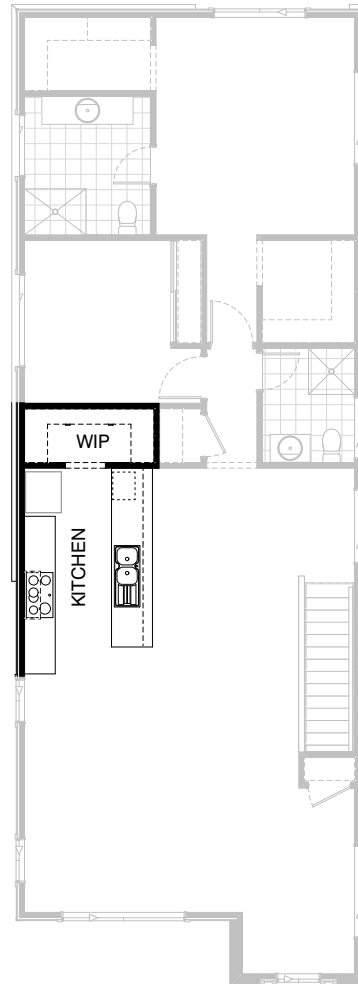
### Option Laundry01 GF

Provide Laundry Option including laminate base cupboards and stainless steel inset trough  
2No. 900mm base cupboards,  
1No. 450mm base cupboard,  
2No. 900mm overhead cupboards,  
1No. 450mm overhead cupboards  
with additional tiled splash back and bench top to suit.



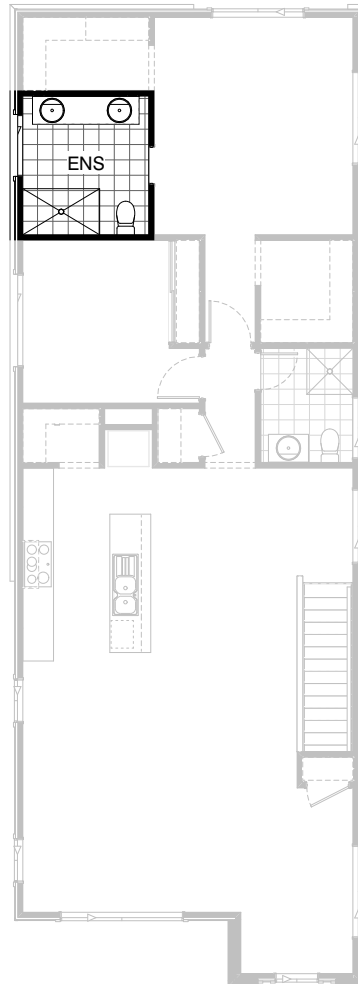
**Option External02**

Provide Grand Alfresco & Balcony option including  
 2No. additional 350mm x 350mm brick piers to full height, tiled roof to Balcony, tiled floor and metal balustrade to Balcony, replace ASW2024 window with ASD2124 sliding door Note: Also available in conjunction with Option IP2 (or Option Internal03 if chosen with the Kingston facade and option Internal04 if chosen with the Bradbury facade).



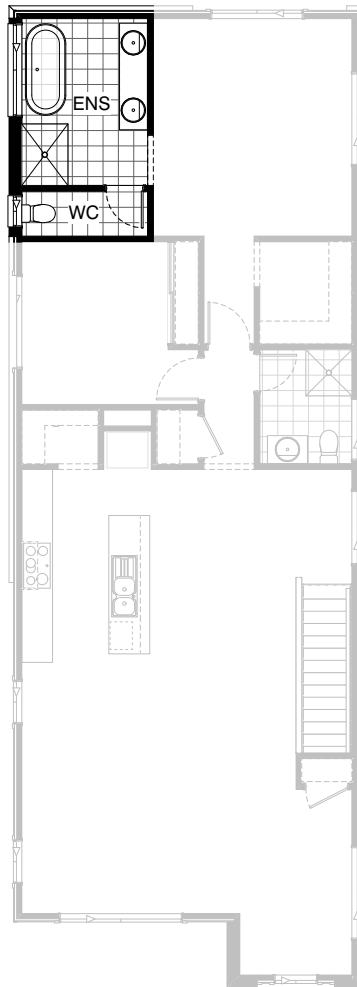
### Option Kitchen01 FF

Provide galley-style Kitchen option including  
1no. 900mm retractable rangehood with 900mm  
electric cooktop & 900mm under bench oven,  
1no. 450mm drawer unit, dishwasher provision,  
1no. microwave provision with pot drawer,  
2No. 1200mm base cupboards,  
1No. 900mm base cupboard,  
1No. 800mm base cupboard, additional benchtop to  
suit. Additional Walk-in Pantry space with 4No.  
300mm selves to rear and  
4No. 450mm shelves to sides.



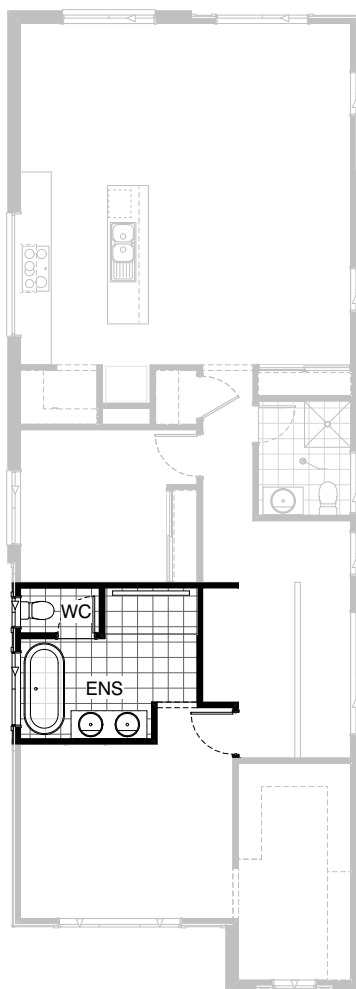
### Option Ensuite01 FF

Provide Ensuite upgrade option with 1500mm x 900mm tiled shower base and 2082mm vanity with double basins in lieu of standard.



### Option Ensuite02 FF

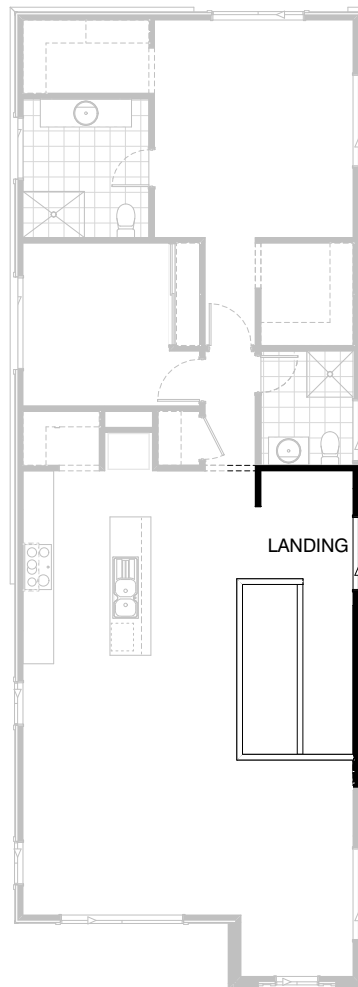
Provide Ensuite upgrade option with enclosed WC with stud and plaster wall and 720mm hinged door. Also rearranges the layout and includes relocated 1200mm x 900mm tiled shower base, 1no. 1780mm freestanding bath and 1no. 2082mm vanity with double basins. Option removes existing WIR to allow for extra Ensuite space. Replace ASW1212 with 1no. ASW1218 and 1no. ASW1006 aluminium windows as shown. 820mm hinged door to Ensuite removed and replaced with 300mm deep bulkhead.



### Option Ensuite03 FF

Provide Ensuite upgrade option including enclosed WC with stud and plaster wall and 720mm hinged door and 1no. ASW 1006 window. Also includes 1no. 1800mm x 900mm tiled shower base, 1780mm freestanding bath, 1no. 1482mm vanity with double basins. Replace ASW1012 with 1no. ASW1215.

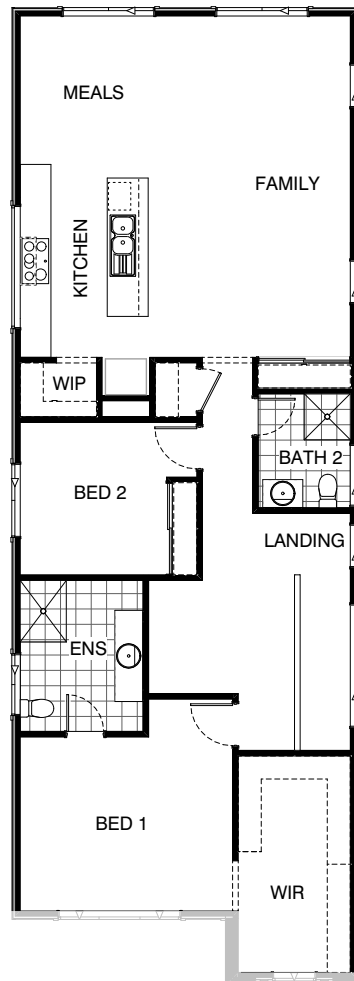
Note: Option only available in conjunction with Option Internal02 (or Option Internal03 if chosen with the Kingston facade and option Internal04 if chosen with the Bradbury facade).



### Option Internal01 FF

Provide Void area above Entry including 1020(h) plaster wall balustrade. Also remove Linen closet and provide stud and plaster nib wall to Study.





### Option Internal02 FF

Provide floor plan option with Bed 1 & WIR to the front of the home including:  
Rename Study to WIR & delete ASW1018 window,  
Bed 1 length reduced 850mm,  
Ensuite length increased 240mm,  
Bed 2 & Rohn length reduced 200mm