



## FLOORPLAN OPTIONS

We personalise our floorplans. Talk to us about our huge range of ready-to-go design options.

### Facades available:

Airlie, Contemporary, Kingston  
Outback, Traditional

**Overall home width 31.52m**

**Overall home length 15.61m**

Residence	2871m <sup>2</sup>	30.9sq
Garage	38.5m <sup>2</sup>	4.2sq
Porch	3.7m <sup>2</sup>	0.4sq
Alfresco	29.2m <sup>2</sup>	3.1sq
Verandah	15.1m <sup>2</sup>	1.6sq
<b>Total</b>	<b>373.7m<sup>2</sup></b>	<b>40.2sq</b>

Listed details based on Traditional facade floorplan (illustrated)

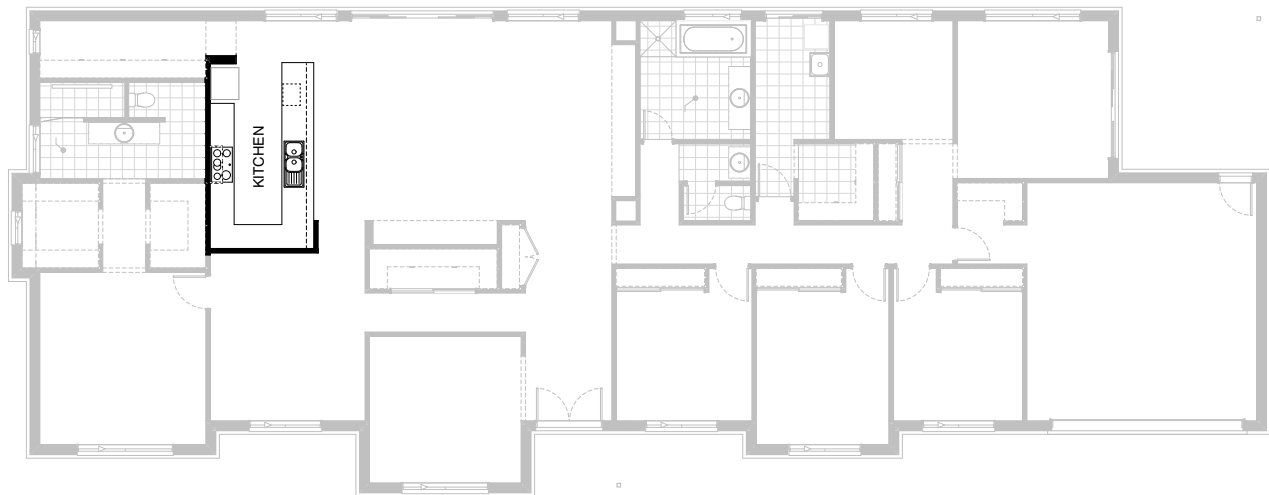


## Option Kitchen01

Provide L-shaped Kitchen option which moves Ref space to other side of kitchen.

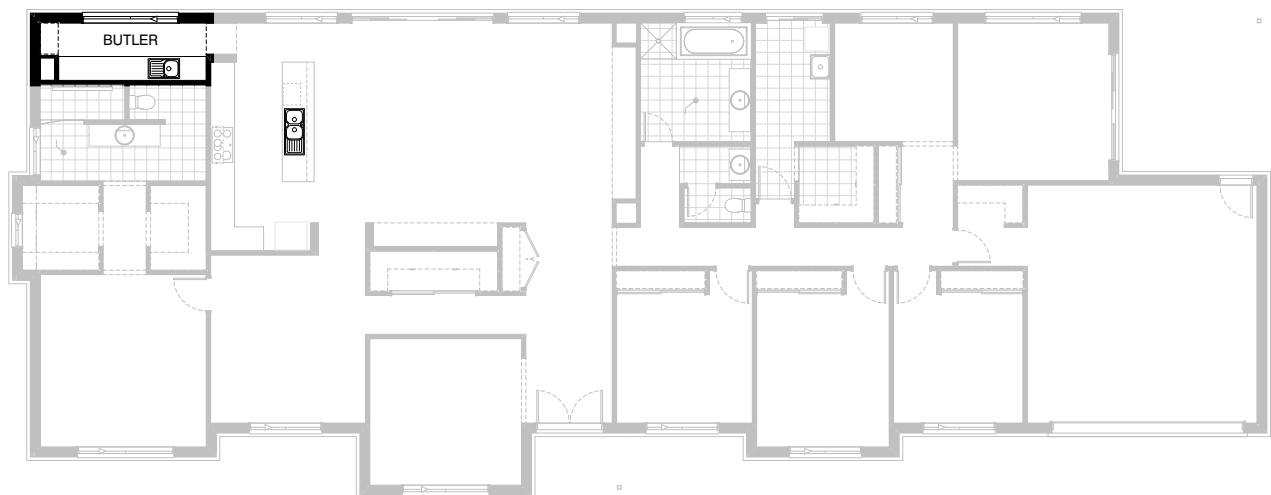
Kitchen includes 900mm retractable range hood,  
900mm electric cook top,  
900mm under bench oven,  
1no. 450mm drawer unit,  
dishwasher provision, microwave provision with pot drawer,  
1no. 900mm base cupboard,  
1no. 800mm base cupboards,  
1no. 700mm base cupboards,  
2no. 600mm base cupboards,  
1no. 900mm blind corner base cupboard,  
1no. 450mm base cupboard,  
1no. 300mm base cupboard.

Additional bench top and tiled splashback to suit.



### Option Kitchen02

Provide U-shaped Kitchen option which moves Ref space to other side of kitchen.  
Kitchen includes 900mm retractable range hood,  
900mm electric cook top,  
900mm under bench oven,  
450mm drawer unit,  
dishwasher provision, microwave provision with pot drawer,  
1no. 900mm base cupboard,  
1no. 800mm base cupboards,  
3no. 600mm blind corner base cupboards,  
1no. 450mm base cupboard,  
2no. 300mm base cupboards.  
1no. 900mm blind corner base cupboard,  
1no. 1050mm blind corner base cupboard,  
Additional bench top and tiled splashback to suit.

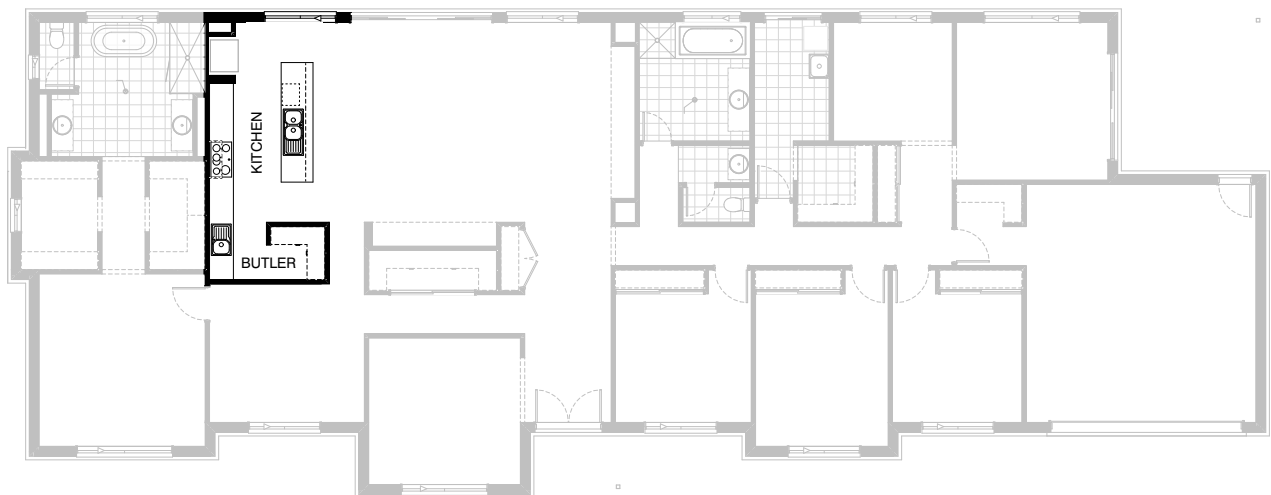


### Option Kitchen03

Provide Kitchen option which provides Butler's Pantry in lieu of Walk-in Pantry. Butler's Pantry includes

4no. 800mm base cupboards,  
1no. 450mm base cupboard,  
1no. single bowl sink,  
4no. 450mm shelves.

Replace ASW1806 with ASW0524 on adjacent wall. Option also decreases opening to 800mm wide and increases the nearest Kitchen base cupboard to 800mm wide in lieu of standard 700mm.



### Option Kitchen04

Provide Kitchen option which provides Butler's Pantry in lieu of Walk-in Pantry.

5No. 700mm base cupboards,

1No. 450mm base cupboard,

1No. single bowl sink,

4No. 450mm shelves.

Replace ASW1806 with ASW0524 on adjacent wall. Option also decreases opening to 800mm wide and increases the nearest Kitchen base cupboard to 800mm wide in lieu of standard 700mm.



### Option Ensuite01

Provide Grand Ensuite upgrade option that also moves location of Walk-in Pantry and increases size of Walk-in Robes.

Ensuite includes 2No. 1282mm vanities, 1800mm x 900mm tiled shower base, freestanding bath and enclosed WC with 720mm hinged door and ASW1006 window. Replace ASW1012 window with ASW1218 on rear wall of Ensuite as shown.

Option also changes Kitchen layout to accommodate and moves Ref space to other side of Kitchen and provides relocated Walk-in Pantry.

Kitchen includes 900mm canopy range hood,  
900mm electric cook top,  
600mm under bench oven,  
450mm drawer unit, dishwasher provision, microwave provision with pot drawer,  
1No. 900mm base cupboard,  
5No. 700mm base cupboards,  
2No. 300mm base cupboards, with additional bench top  
and tiled splashback to suit.



### Option Ensuite02

Provide Ensuite upgrade including 720mm hinged door to WC and 1782mm vanity with double basins.



### Option Ensuite03

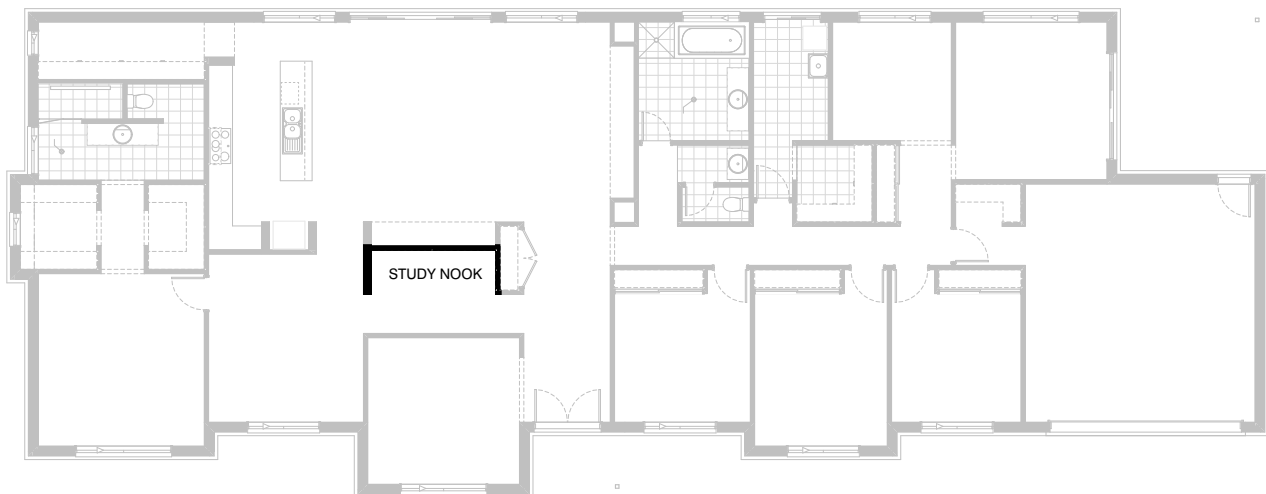
Provide Ensuite upgrade option including enclosed WC with 720mm hinged door and ASW1006 window, 1500mm x 900mm tiled shower base, 1782mm vanity with double basins, 1675mm bath with tiled hob.  
Option also replaces ASW1812 window to Walk-in Pantry with ASW0521 and moves the window to adjacent wall as shown.





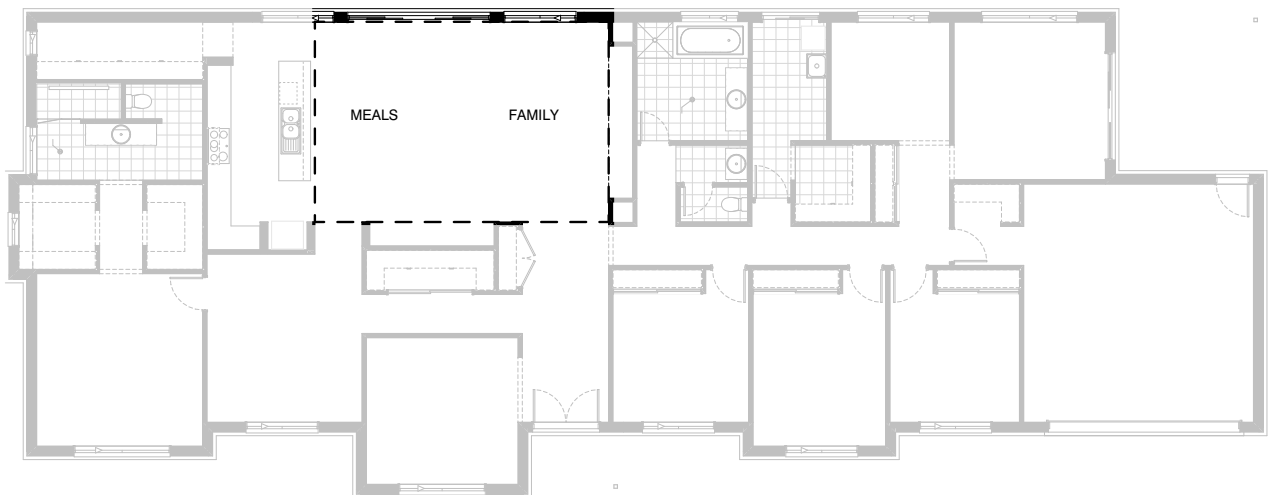
### Option Internal01

Provide 5th Bedroom option in lieu of standard Study.  
Option includes 820mm hinged door to opening,  
removes Linen closet, provide Walk-in Robe  
with 4No. 450mm shelves.  
Option also reduces size of Walk-in Linen to Laundry.



### Option Internal02

Provide Study Nook option in lieu of standard Walk-in Linen.  
Option removes sliding Robe doors and 4No. 450mm shelves  
and provide 180mm wide rib wall as shown.

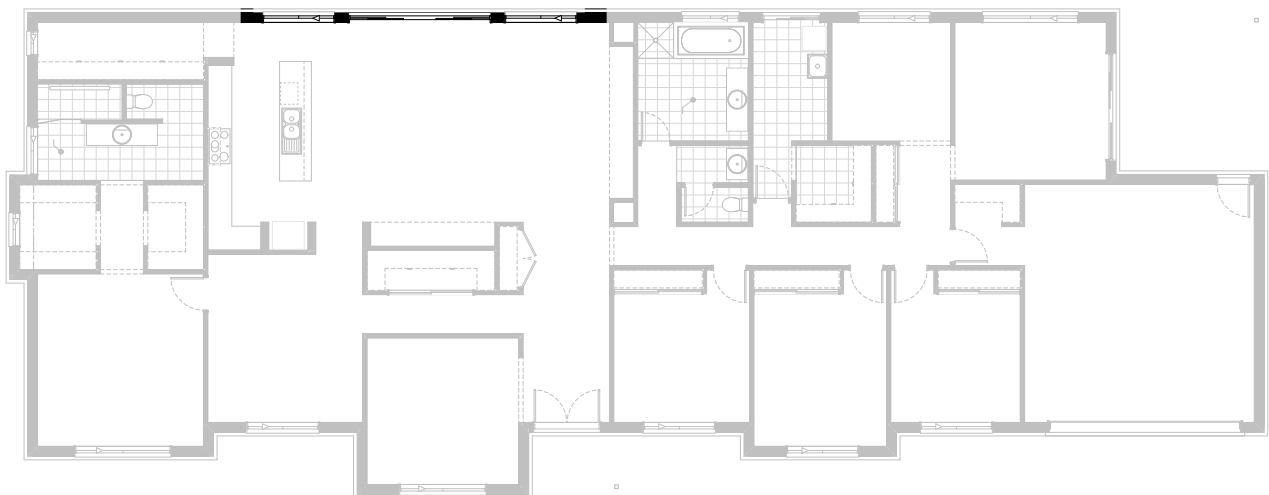


### Option Internal03

Provide raked ceiling option to Meals and Living area with standard ceiling height over Kitchen.



GRAND ALFRESCO



### Option External01

Provide Grand Alfresco option by increasing the Alfresco size by 3000mm x4200mm as shown.  
Option includes increased tiled roof over, and 3No. additional painted timber posts.



### Option Laundry01

Provide Laundry upgrade providing laminate base cupboards and stainless steel inset trough including 3No. 700mm base cupboards, 3No. 700mm overhead cupboards, additional benchtop and tiled splashback to suit.



### Option Garage01

Provide triple car Garage including  
additional Garage door as per colour selection.  
Increases area by 23.33m<sup>2</sup>.  
Increases width by 3600mm.