

# BROMPTON

sheffield façade



lancaster façade



kent façade



wiltshire façade



harrogate façade



callington façade

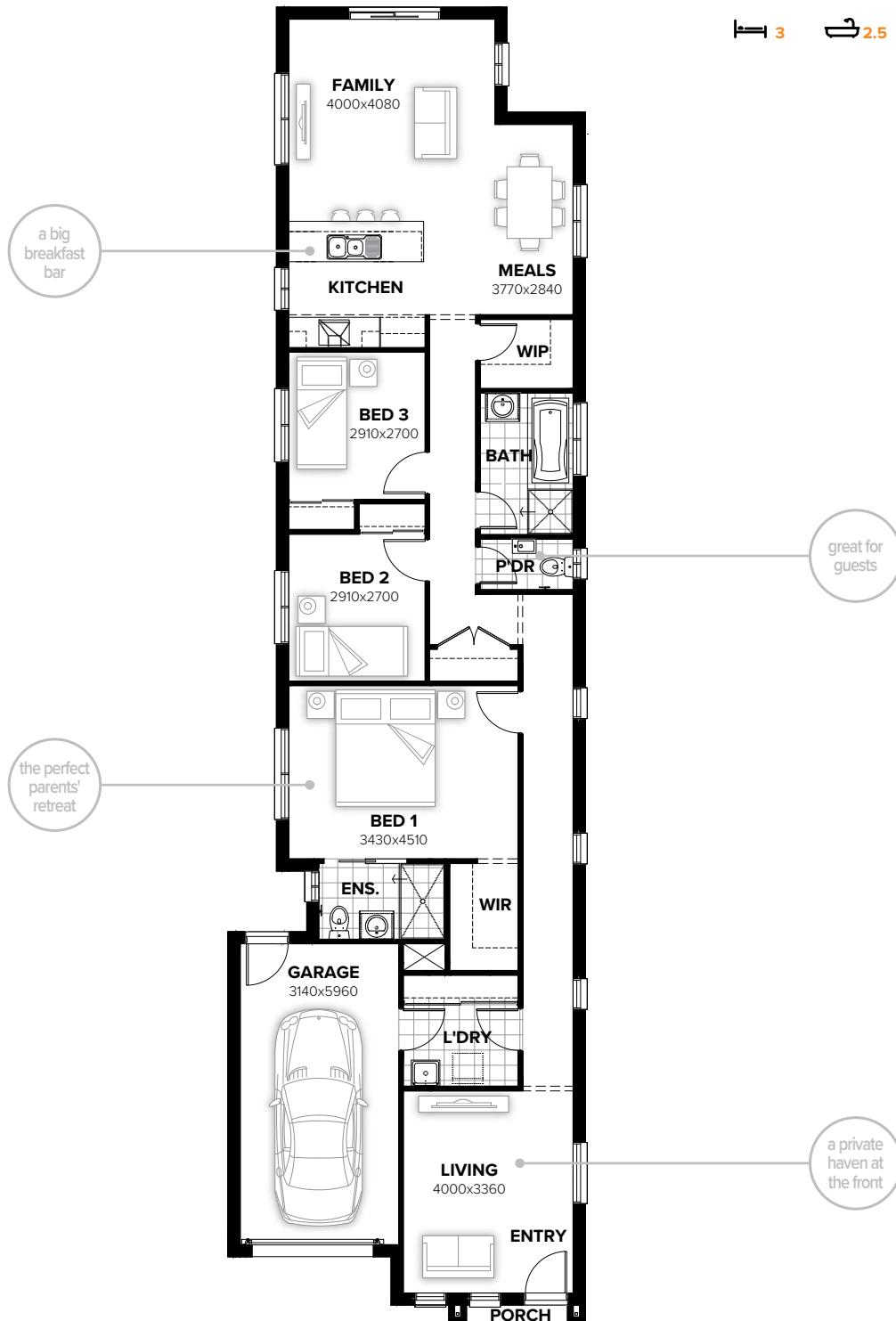


swansea façade



# BROMPTON 155

3 2.5 0 1



## FLOORPLAN OPTIONS

Want to put a personal touch on your home? Speak to your New Home Consultant about the exciting range of ready-to-go design options for this floorplan.

Popular design options include:

- Kitchen option
- Laundry upgrades
- Alfresco option

min lot width	8.0m	residence	135.72sqm	14.61sq
min lot depth	38.0m	porch	0.95sqm	0.10sq
home width	7.07m	garage	21.30sqm	2.29sq
home length	26.04m	<b>total</b>	<b>157.97sqm</b>	<b>17.00sq</b>

Listed details based on Sheffield façade floorplan (illustrated)

Call 13 BURBANK Visit [burbank.com.au](http://burbank.com.au)

**Burbank**   
#noplacelikehome

\*Copyright conditions. All photos and illustrations are representative only. Floor plans and specifications may be varied by Burbank without notice, the dimensions are diagrammatic only and a Building Contract with final drawings will display correct dimensions and detail. All designs are the property of Burbank and must not be used, reproduced, copied or varied, wholly or in part without written permission from an authorised Burbank representative. Copyright Burbank Australia (SA) Pty Ltd. ABN 96 165 533 406. BLD 266709.

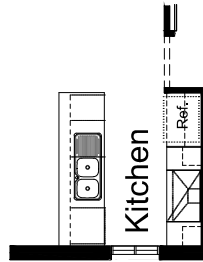
# FLOORPLAN OPTIONS

# BROMPTON 155

3 2.5 0 1

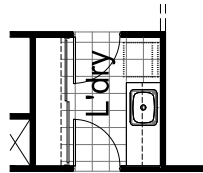
## OPTION K1

Provide Kitchen upgrade by providing 900mm upright cooker, 900mm canopy rangehood, reduce base cupboards & overhead cupboards to suit.



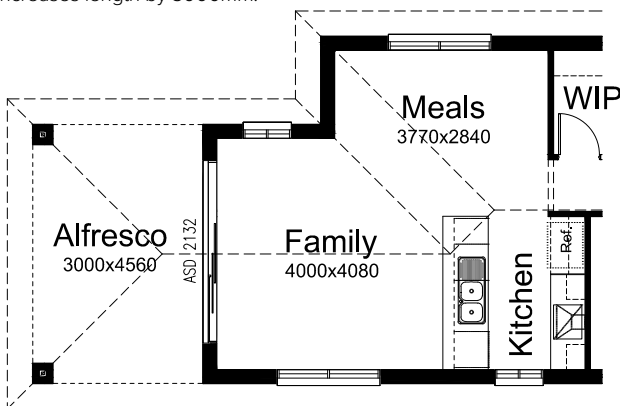
## OPTION LD1

Provide 1No. 800mm & 1No. 600mm laminated cabinet and 1No. 800mm & 1No. 600mm overhead cupboards to Laundry.



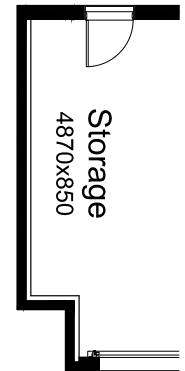
## OPTION EP1

Provide 3000mm x 4560mm Alfresco to rear of Meals room with 2132 ASD to meals and 2/350x350mm brick piers on strip footings. Earth floor to Alfresco. Increases area by 13.68m<sup>2</sup>. Increases length by 3000mm.



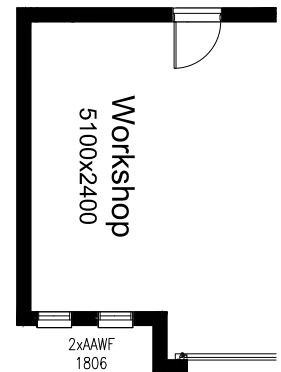
## OPTION G1

Provide extension to Garage to create additional Storage area. Increases width by 850mm. Increases area by 4.55m<sup>2</sup>.



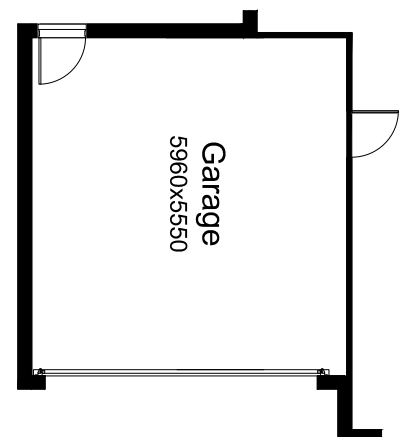
## OPTION G2

Provide extension to Garage to create Workshop area including additional window to suit. Increases width by 2400mm. Increases area by 13.39m<sup>2</sup>.



## OPTION G3

Provide triple car Garage including additional roller door to front. Increases area by 15.50m<sup>2</sup>. Increases width by 2170mm.



Call 13 BURBANK Visit [burbank.com.au](http://burbank.com.au)

**Burbank**   
#noplacelikehome

\*Copyright conditions. All photos and illustrations are representative only. Floor plans and specifications may be varied by Burbank without notice, the dimensions are diagrammatic only and a Building Contract with final drawings will display correct dimensions and detail. All designs are the property of Burbank and must not be used, reproduced, copied or varied, wholly or in part without written permission from an authorised Burbank representative. Copyright Burbank Australia (SA) Pty Ltd. ABN 96 165 533 406. BLD 266709.