

# GRANGE



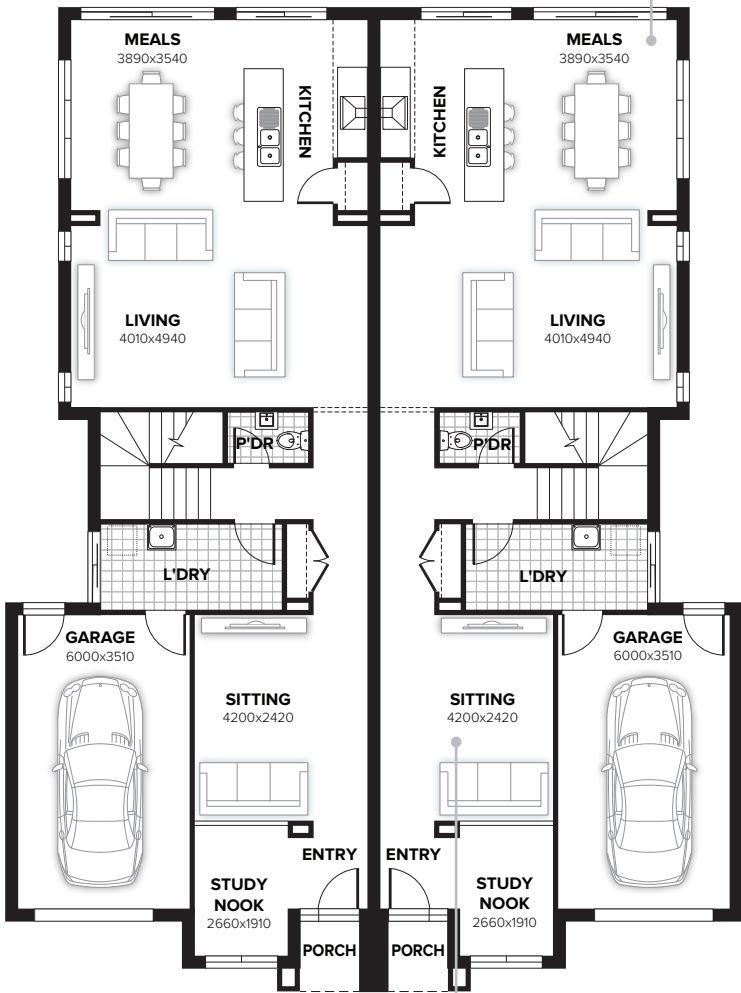
All façade images are artist's impressions only. These images may contain internal or external upgrade items such as feature renders and timber look garage doors. Images contain items not supplied by Burbank, which include furniture, landscaping, fencing and external lighting. See your New Home Consultant for full specifications.

# GRANGE 220

3 2.5 0 1

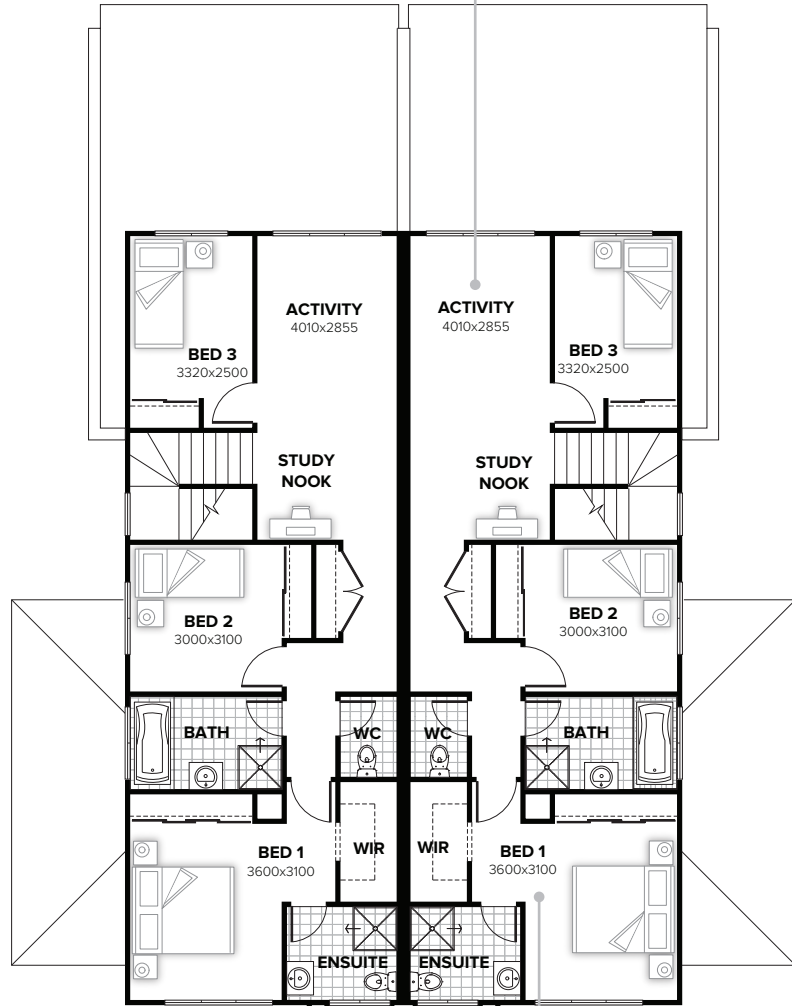
great entertainment space

space to work, rest and play



ground floor

walk right in, sit right down



first floor

your own private suite

## FLOORPLAN OPTIONS

Want to put a personal touch on your home? Speak to your New Home Consultant about the exciting range of ready-to-go design options for this floorplan.

Popular design options include:

- Kitchen options
- Balcony to bed 1
- Laundry upgrade
- Activity in lieu of bed 3
- Ensuite upgrade
- Alfresco option

min lot width	15.0m	residence	192.29sqm	20.70sq
min lot depth	35.0m	porch	1.97sqm	0.21sq
home width	14.99m	garage	23.76sqm	2.56sq
home length	20.03m	<b>total</b>	<b>218.02sqm</b>	<b>23.47sq</b>

Listed details based on Benson façade floorplan (illustrated)

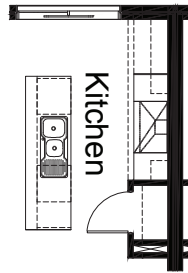
Call 13 BURBANK Visit [burbank.com.au](http://burbank.com.au)

**Burbank**   
#noplacelikehome

\*Copyright conditions. All photos and illustrations are representative only. Floor plans and specifications may be varied by Burbank without notice, the dimensions are diagrammatic only and a Building Contract with final drawings will display correct dimensions and detail. All designs are the property of Burbank and must not be used, reproduced, copied or varied, wholly or in part without written permission from an authorised Burbank representative. Copyright Burbank Australia (SA) Pty Ltd. ABN 96 165 533 406. BLD 266709.

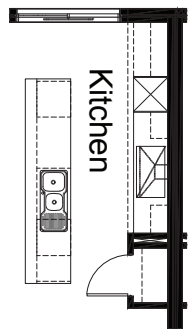
## OPTION K1

Provide Kitchen upgrade with 900mm appliances (Upright cooker, Hotplate & Canopy range hood. 2no 450mm base cupboards & 2no 300mm overhead cupboards.



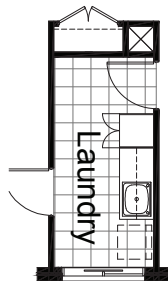
## OPTION K2

Provide Kitchen upgrade with Laminated wall oven tower with 600mm overhead cupboards & 2no Pot draws 2no. 2no 600mm base cupboards, 3no. 900mm pot draws, 2no 450mm overhead cupboards, 900m Cooktop with 900mm Canopy range hood and an additional 1no 900mm base cupboard to island. Benchtop extended to suit



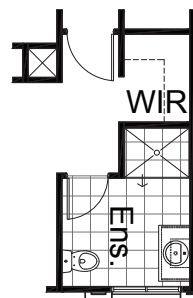
## OPTION L1

Provide Laundry upgrade with 1no. Laminated Broom cupboard, Laminated bench top with 45ltr insert trough, 1no 800mm base cupboard and 1no 400mm base cupboard, 1no 800mm overhead cupboard and 1no 400mm overhead cupboard. Additional tiling to suit.



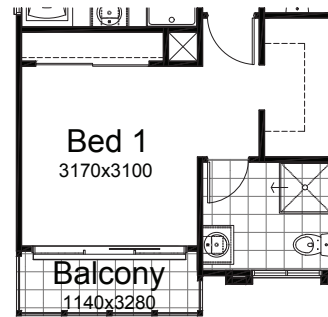
## OPTION ENS1

Provide Ensuite upgrade with 1165mm 900mm tiled shower base recessed into W.I.R by 900mm and swapping toilet with Vanity to allow for 982mm Vanity upgrade.



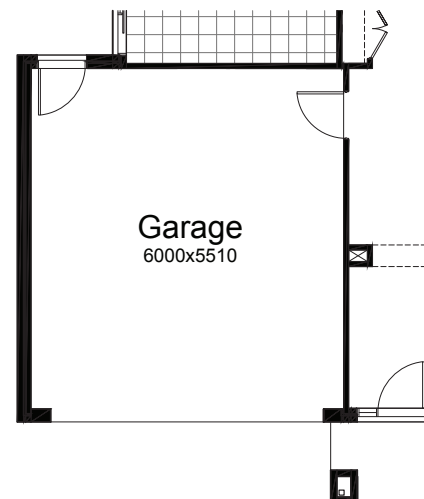
## OPTION EP1

Provide tiled 1140mm x 3280mm Balcony with glass balustrade, stainless steel posts and 2100mm x 2690mm sliding door I.L.O standard 1200mm x 2170mm awning window. NOTE this option encroaches into Bed 1 by 430mm



## OPTION EP1

Provide tiled 1140mm x 3280mm Balcony with glass balustrade, stainless steel posts and 2100mm x 2690mm sliding door I.L.O standard 1200mm x 2170mm awning window. NOTE this option encroaches into Bed 1 by 430mm



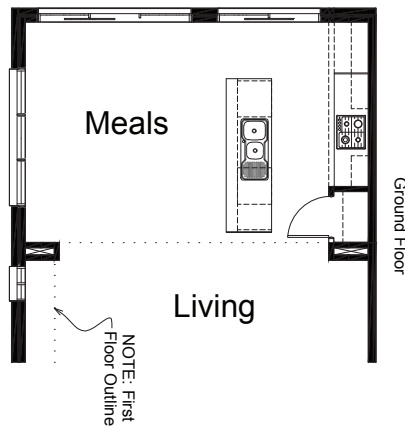
# FLOORPLAN OPTIONS

# GRANGE 220

3 2.5 0 1

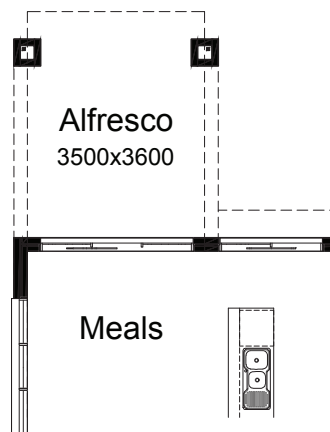
## OPTION IP1

Provide 3920mm x 5445mm Activity Room to first floor in lieu of Activity and Bed 3. Upgrade windows to 2/AAW 2121 and provide part dwarf wall balustrade to staircase.



## OPTION EP2

Provide Alfresco Option to rear of Meals including flat roof and 2no. brick piers. Earth floor to Alfresco  
Increase area by 12.60m<sup>2</sup>  
Increase length by 3500mm.



Call 13 BURBANK Visit [burbank.com.au](http://burbank.com.au)

**Burbank**   
#noplacelikehome

\*Copyright conditions. All photos and illustrations are representative only. Floor plans and specifications may be varied by Burbank without notice, the dimensions are diagrammatic only and a Building Contract with final drawings will display correct dimensions and detail. All designs are the property of Burbank and must not be used, reproduced, copied or varied, wholly or in part without written permission from an authorised Burbank representative. Copyright Burbank Australia (SA) Pty Ltd. ABN 96 165 533 406. BLD 266709.