

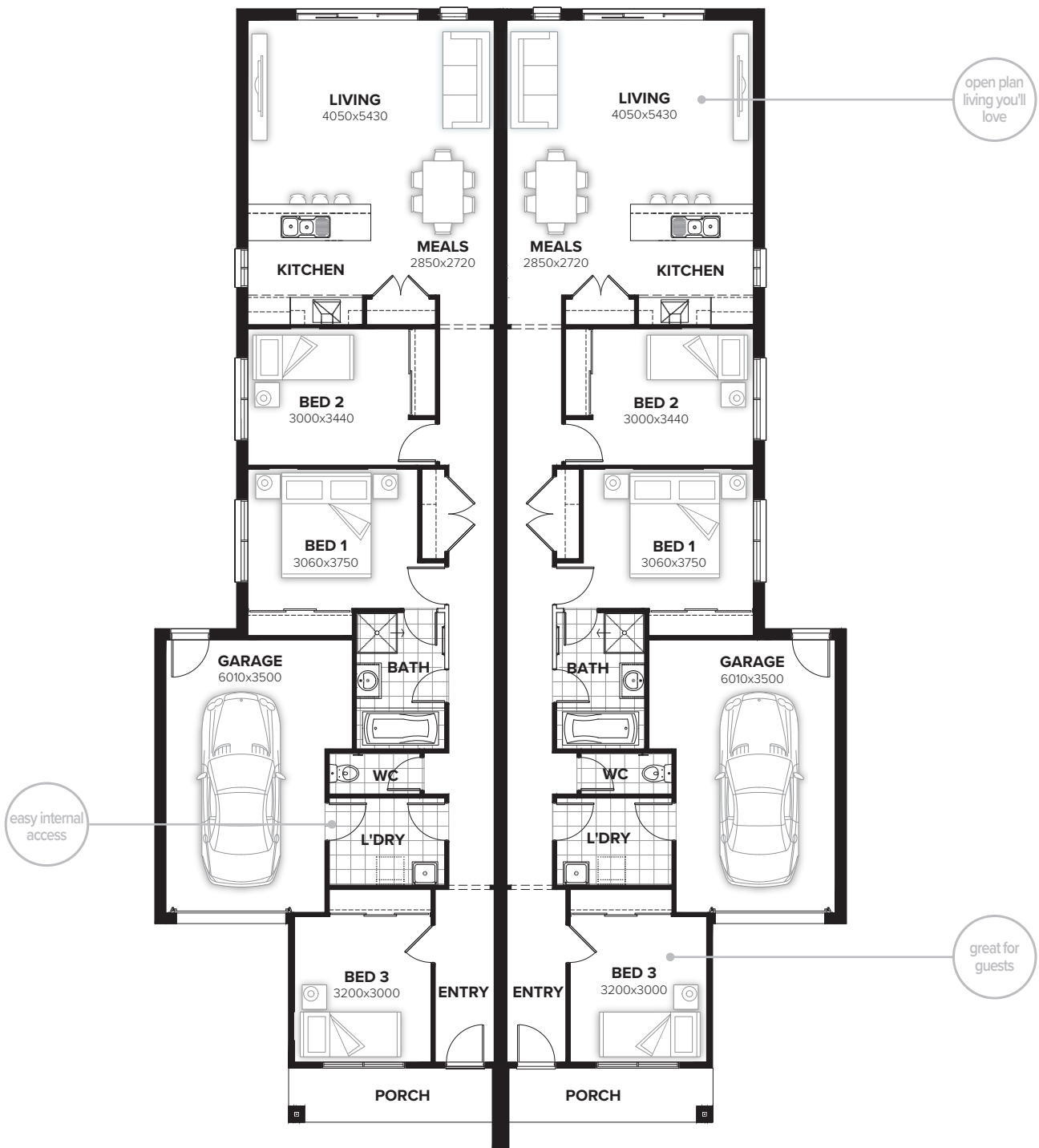
HACKNEY



All façade images are artist's impressions only. These images may contain internal or external upgrade items such as feature renders and timber look garage doors. Images contain items not supplied by Burbank, which include furniture, landscaping, fencing and external lighting. See your New Home Consultant for full specifications.

HACKNEY 150

3 1 0 1



FLOORPLAN OPTIONS

Want to put a personal touch on your home? Speak to your New Home Consultant about the exciting range of ready-to-go design options for this floorplan.

Popular design options include:

- Kitchen option
- Alfresco option
- Pergola addition to bed 1
- Ensuite upgrade

Details below based on single side of duplex only

min lot width	15.2m	residence	118.10sqm	12.71sq
min lot depth	40.0m	porch	5.66sqm	0.61sq
home width	15.20m	garage	25.02sqm	2.69sq
home length	25.12m	total	148.78sqm	16.02sq

Listed details based on Benson façade floorplan (illustrated)

Call 13 BURBANK Visit burbank.com.au

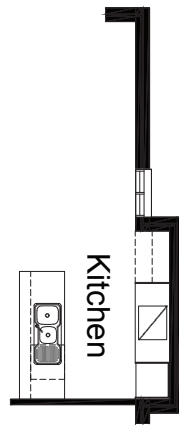
Burbank 
#noplacelikehome

*Copyright conditions. All photos and illustrations are representative only. Floor plans and specifications may be varied by Burbank without notice, the dimensions are diagrammatic only and a Building Contract with final drawings will display correct dimensions and detail. All designs are the property of Burbank and must not be used, reproduced, copied or varied, wholly or in part without written permission from an authorised Burbank representative. Copyright Burbank Australia (SA) Pty Ltd. ABN 96 165 533 406. BLD 266709.

OPTION K1

Provide Kitchen Option by extruding kitchen out by 600mm and rotating kitchen 90 degree's so island bench faces Meals area. Relocate window Increase area by 2.08m²

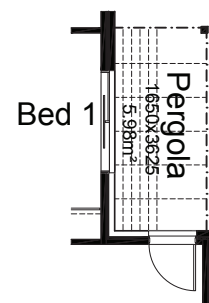
Mirrored for Lot 2



OPTION EP1

Provide Pergola to Bed 1 with 1no. 2100mm x 1810mm aluminium sliding door in lieu of sliding window.

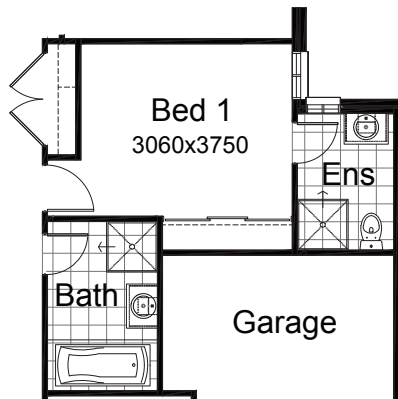
Mirrored for Lot 2



OPTION ENS1

Provide Ensuite option including 900mm x 900mm tiled shower base and screen, 682mm vanity unit, 1no. 1027 x 610 aluminium sliding window and recess laminated shaving cabinet. NOTE: This option deletes the access door to Garage & Bathroom. Increase area by 4.53m²

Mirrored for Lot 2



OPTION EP2

Provide Alfresco option with 2no. brick piers and earth floor to Alfresco.. Increase area by 16.10m² Increases length by 3500mm. Alfresco width: 4600mm.

Mirrored for Lot 2

