

LOCKLEY

sheffield façade



lancaster façade



kent façade



wiltshire façade



harrogate façade



callington façade

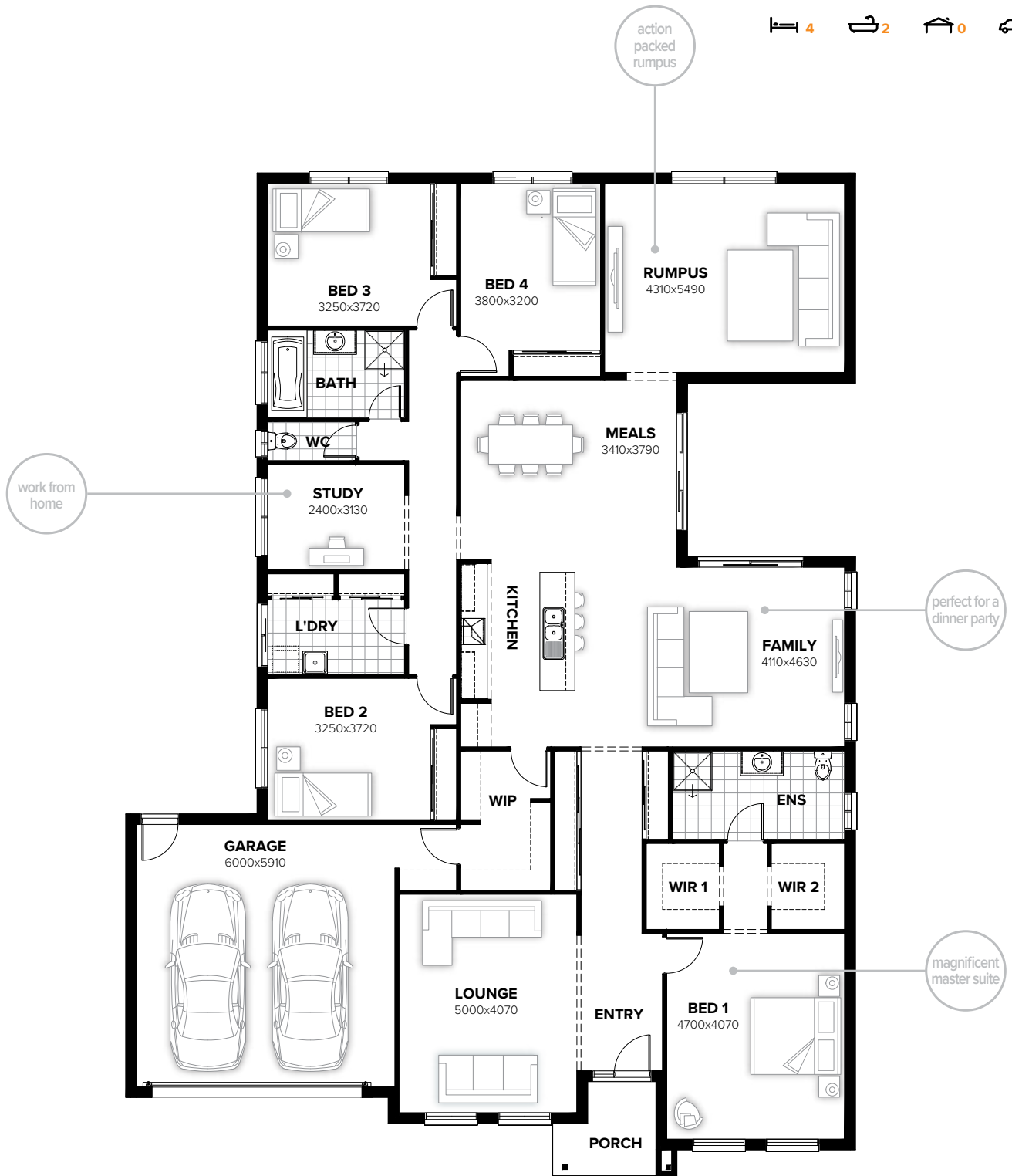


swansea façade



LOCKLEY 305

4 2 0 2



FLOORPLAN OPTIONS

Want to put a personal touch on your home? Speak to your New Home Consultant about the exciting range of ready-to-go design options for this floorplan.

Popular design options include:

- Kitchen options
- Laundry upgrades
- Gas fireplace in rumpus room
- Garage extension to create storage
- Alternative bedroom layouts available
- Alfresco options

min lot width	18.0m	residence	259.50sqm	27.93sq
min lot depth	30.0m	porch	3.96sqm	0.43sq
home width	16.67m	garage	41.15sqm	4.43sq
home length	22.91m	total	304.61sqm	32.79sq

Listed details based on Sheffield façade floorplan (illustrated)

Call 13 BURBANK Visit burbank.com.au

Burbank 
#noplacelikehome

*Copyright conditions. All photos and illustrations are representative only. Floor plans and specifications may be varied by Burbank without notice, the dimensions are diagrammatic only and a Building Contract with final drawings will display correct dimensions and detail. All designs are the property of Burbank and must not be used, reproduced, copied or varied, wholly or in part without written permission from an authorised Burbank representative. Copyright Burbank Australia (SA) Pty Ltd. ABN 96 165 533 406. BLD 266709.

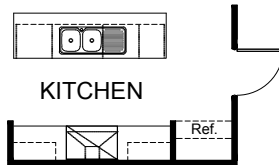
FLOORPLAN OPTIONS

LOCKLEY 305



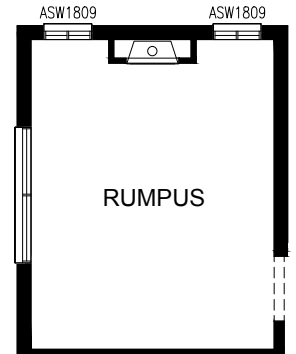
OPTION K1

Provide Kitchen upgrade with 2no. 900mm base cupboards & 2no. 700mm overhead cupboards, 900mm upright oven with 900mm canopy range hood above. Island benchtop cabinetry and Ref. cabinet unchanged.



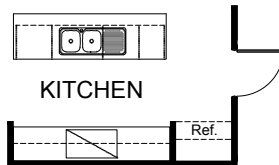
OPTION IP2

Provide Jetmaster SL-350 gas fireplace, 400mm off floor level in a 1550mm x 420mm boxed out plaster wall with a 4 sided black fascia to Rumpus room side wall. Provide 2no. ASW 1809 aluminium sliding window.



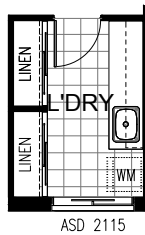
OPTION K2

Provide Kitchen upgrade with a 900mm canopy range hood within 900mm overhead cabinet and 900mm cooktop and under bench oven. Provide 2no. 900mm overhead cupboards, 2no. 900mm base cupboards Island benchtop cabinetry and Ref. cabinet unchanged.



OPTION LD1

Provide Laundry upgrade with laminated insert trough, 2no. 800mm base cupboards, 1no. 600mm base cupboards, 2no. 800mm overhead cupboards & 1no. 600mm overhead cupboards with additional tiled splash back and bench top to suit.



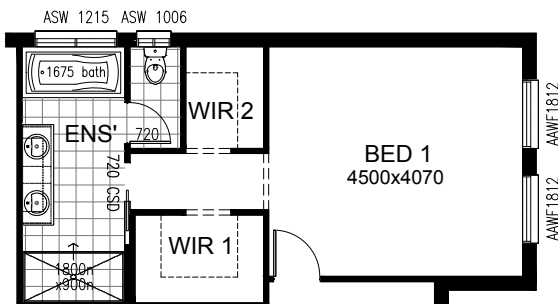
OPTION EP1

Provide Alfresco option with earth floor to Alfresco. Increases area by 15.24m².



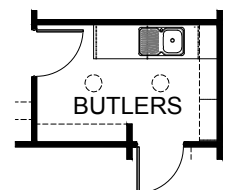
OPTION IP1

Provide Ensuite upgrade option by deleting coats cupboard, decrease Ensuite width by 200mm and provide 1no. 720mm flush panel cavity sliding door. Provide additional 1no. 1800x900 tiled in shower base, 1no. 1782mm wide vanity unit with 2no. basins, 1no. 1675mm wide bath, 1no. ASW 1215 aluminium sliding window, in close toilet with 1no. 720mm flush panel hinged door and 1no. ASW 1006 aluminium sliding window. Decrease Bed 1 width by 200mm (4500mm). Increase WIR 1 width (2280mm), decrease WIR 2 width (1380mm) and delete left hand side hanging rail on WIR 2.



OPTION K3

Provide WIP Upgrade to create Butlers Pantry including reduce 1No. run of 450mm deep shelving to 300mm deep, Provide 2No. 900mm base cabinets including infill cabinet for shelving with single bowl sink and additional 32mm laminate bench top and tiled splash back to suit, 1800(h) laminated shelving module and 2No. 300mm solar tube skylights.



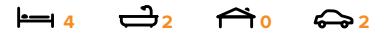
Call 13 BURBANK Visit burbank.com.au

Burbank 
#noplacelikehome

*Copyright conditions. All photos and illustrations are representative only. Floor plans and specifications may be varied by Burbank without notice, the dimensions are diagrammatic only and a Building Contract with final drawings will display correct dimensions and detail. All designs are the property of Burbank and must not be used, reproduced, copied or varied, wholly or in part without written permission from an authorised Burbank representative. Copyright Burbank Australia (SA) Pty Ltd. ABN 96 165 533 406. BLD 266709.

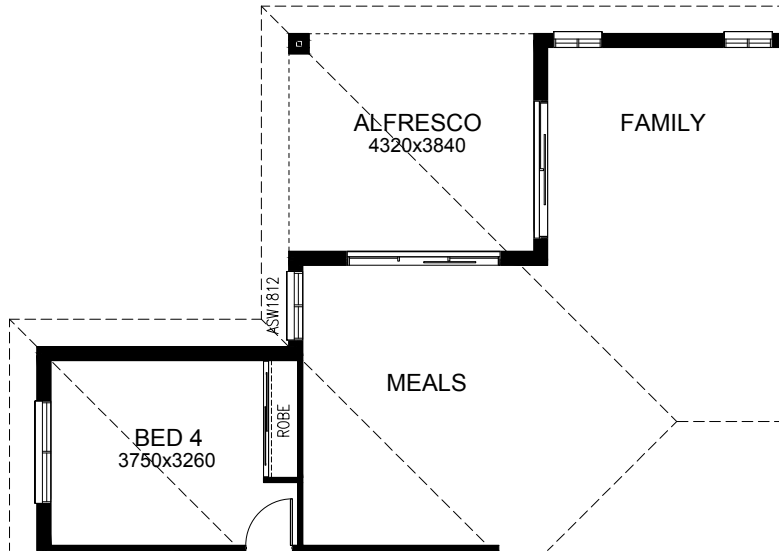
FLOORPLAN OPTIONS

LOCKLEY 305



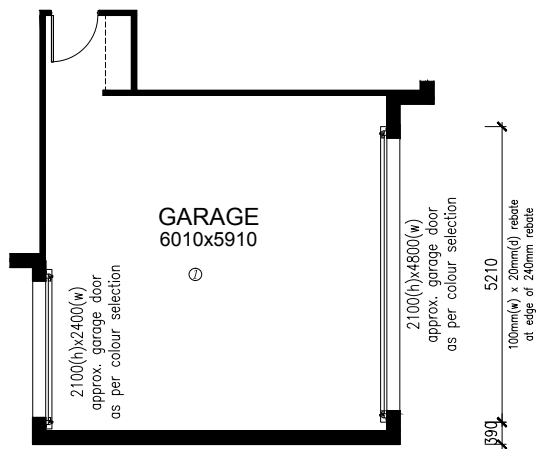
OPTION EP2

Provide Alfresco option with
1no. brick pier and earth floor to Alfresco.
Delete Rumpus and provide additional
1no. ASW 1812 aluminium sliding window to
Meals.
Increase Bed 4 length by 60mm (3260mm) &
decrease Bed 4 width by 50mm (3750mm)



OPTION G1

Provide roller door to
rear of Garage.



Call 13 BURBANK Visit burbank.com.au

Burbank 
#noplacelikehome

*Copyright conditions. All photos and illustrations are representative only. Floor plans and specifications may be varied by Burbank without notice, the dimensions are diagrammatic only and a Building Contract with final drawings will display correct dimensions and detail. All designs are the property of Burbank and must not be used, reproduced, copied or varied, wholly or in part without written permission from an authorised Burbank representative. Copyright Burbank Australia (SA) Pty Ltd. ABN 96 165 533 406. BLD 266709.